



# **Tuberculosis Country Profile 2021 Viet Nam**

*Source: Global tuberculosis report 2021. Geneva: World Health Organization*

*Disclaimer: Tuberculosis country profiles are generated automatically based on data reported by countries and which are held in WHO's global TB database.*

# Tuberculosis profile: Viet Nam

Population 2020: 97 million

## Estimates of TB burden\*, 2020

	Number	(Rate per 100 000 population)
Total TB incidence	172 000 (110 000-247 000)	176 (113-254)
HIV-positive TB incidence	5 600 (3 600-8 100)	5.8 (3.7-8.4)
HIV-negative TB mortality	8 600 (5 500-12 000)	8.9 (5.7-13)
HIV-positive TB mortality	1 800 (1 100-2 600)	1.8 (1.2-2.6)

## Universal health coverage and social protection\*

TB treatment coverage (notified/estimated incidence), 2020	58% (40-91)
TB patients facing catastrophic total costs, 2016	63% (58-67)
TB case fatality ratio (estimated mortality/estimated incidence), 2020	6% (3-10)

## TB case notifications, 2020

Total new and relapse	99 852
- % tested with rapid diagnostics at time of diagnosis	47%
- % with known HIV status	84%
- % pulmonary	80%
- % bacteriologically confirmed <sup>A</sup>	74%
- % children aged 0-14 years	1%
- % women (aged ≥15 years)	28%
- % men (aged ≥15 years)	71%
Total cases notified	101 705

## TB/HIV care in new and relapse TB patients, 2020

	Number	(%)
Patients with known HIV status who are HIV-positive	2 747	3.3%
- on antiretroviral therapy	2 298	84%

## Drug-resistant TB care\*\*, 2020

% of bacteriologically confirmed TB cases tested for rifampicin resistance - New cases <sup>A</sup>	85%
% of bacteriologically confirmed TB cases tested for rifampicin resistance - Previously treated cases <sup>A</sup>	98%
Laboratory-confirmed cases - MDR/RR-TB <sup>AA</sup>	3 714
Patients started on treatment - MDR/RR-TB <sup>AAA</sup>	3 294
Laboratory-confirmed cases - pre-XDR-TB or XDR-TB <sup>AA</sup>	340
Patients started on treatment - pre-XDR-TB or XDR-TB <sup>AAA</sup>	259
MDR/RR-TB cases tested for resistance to any fluoroquinolone	2 295

## Treatment success rate and cohort size

	Success	Cohort
New and relapse cases registered in 2019	91%	102 420
Previously treated cases, excluding relapse, registered in 2019	87%	2 002
HIV-positive TB cases registered in 2019	79%	2 865
MDR/RR-TB cases started on second-line treatment in 2018	72%	2 925
XDR-TB cases started on second-line treatment in 2018	67%	198

## TB preventive treatment, 2020

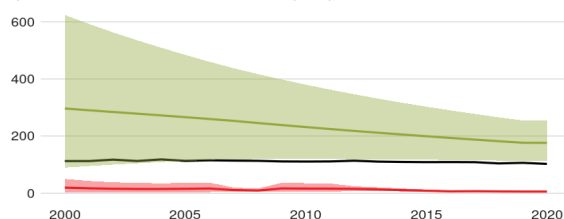
% of HIV-positive people (newly enrolled in care) on preventive treatment	
% of children (aged < 5 years) household contacts of bacteriologically-confirmed TB cases on preventive treatment	5% (4.6-5.5)

## TB financing

National TB budget, 2021 (US\$ millions)	133
- Funding source, domestic	3.7%
- Funding source, international	22%
- unfunded	75%

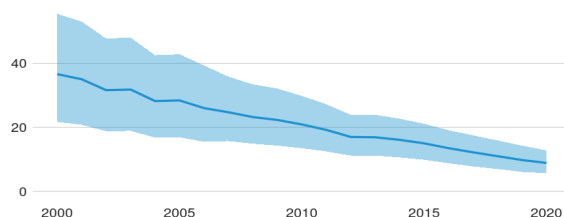
## Incidence, New and relapse TB cases notified, HIV-positive TB incidence

(Rate per 100 000 population per year)



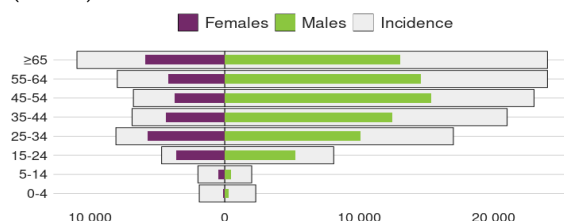
## HIV-negative TB mortality

(Rate per 100 000 population per year)



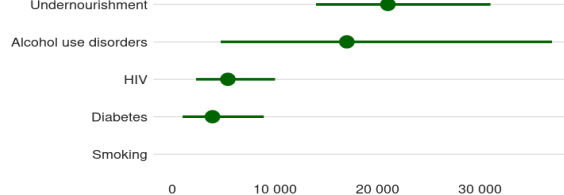
## Incidence, Notified cases by age group and sex, 2020

(Number)



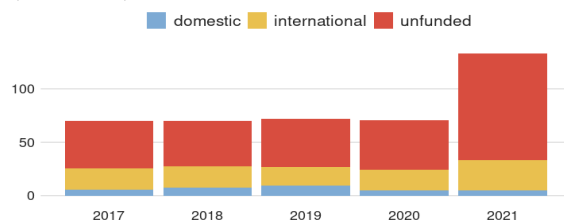
## Cases attributable to five risk factors, 2020

(Number)



## Total budget

(US\$ millions)



\* Estimates of TB burden are produced by WHO in consultation with countries. Ranges represent uncertainty intervals.

\*\* RR is TB resistant to rifampicin (R); MDR is TB resistant to R + isoniazid; pre-XDR is TB resistant to R + any fluoroquinolone

<sup>A</sup> Calculated for pulmonary cases only

<sup>AA</sup> Includes cases with unknown previous TB treatment history

<sup>AAA</sup> Includes patients diagnosed before 2020 and patients who were not laboratory-confirmed