

THAILAND

COUNTRY DATA

EPIDEMIC ESTIMATES

	2010	2015	2021
New HIV infections			
New HIV infections (all ages)	16 000 [15 000–16 000]	11 000 [10 000–11 000]	6500 [6200–6800]
New HIV infections (0–14)	630 [540–720]	<200 [<100– <200]	<100 [<100– <100]
New HIV infections (15–24)	7200 [5100–8400]	5600 [3900–6900]	3200 [2200–4000]
New HIV infections (women, 15+)	4900 [4500–5300]	2700 [2500–2900]	1500 [1400–1600]
New HIV infections (men, 15+)	10 000 [9400–11 000]	8000 [7600–8500]	4900 [4700–5200]
HIV incidence (all ages) per 1000 population	0.23 [0.22–0.24]	0.16 [0.15–0.17]	0.09 [0.09–0.10]
AIDS-related deaths			
AIDS-related deaths (all ages)	27 000 [22 000–32 000]	17 000 [14 000–22 000]	9300 [7500–12 000]
AIDS-related deaths (0–14)	1200 [1000–1300]	<500 [<500– <500]	<100 [<100– <200]
AIDS-related deaths (women, 15+)	9000 [7000–11 000]	7400 [5800–9300]	4600 [3400–6300]
AIDS-related deaths (men, 15+)	16 000 [14 000–20 000]	9700 [7900–12 000]	4600 [3600–6300]
People living with HIV			
People living with HIV (all ages)	610 000 [560 000–650 000]	560 000 [510 000–600 000]	520 000 [470 000–570 000]
People living with HIV (0–14)	11 000 [9700–13 000]	5900 [5000–6700]	2000 [1700–2200]
People living with HIV (women, 15+)	260 000 [250 000–280 000]	240 000 [220 000–260 000]	220 000 [190 000–240 000]
People living with HIV (men, 15+)	330 000 [310 000–360 000]	310 000 [280 000–330 000]	300 000 [270 000–330 000]
HIV prevalence (15–49)	1.5 [1.3–1.7]	1.3 [1.1–1.5]	1.0 [0.8–1.2]

LAWS AND POLICIES

Laws criminalizing the transmission of, non-disclosure of or exposure to HIV transmission	No
Criminalization of sex work among consenting adults	Any criminalization or punitive regulation of sex work
Criminalization of same-sex sexual acts in private	No, laws penalizing consensual same-sex sexual acts have been decriminalized or have never existed anywhere in the country
Criminalization of possession of small amounts of drugs	Yes
Criminalization of transgender people	No
Laws or policies restricting the entry, stay and residence of people living with HIV	No restrictions
Parental consent for adolescents to access HIV testing	No
Spousal consent for married women to access sexual and reproductive health services	No
Mandatory HIV testing for marriage, work or residence permits or for certain groups	No

STIGMA AND DISCRIMINATION

Percentage of women and men aged 15–49 years who report discriminatory attitudes towards people living with HIV	2015	2019
(2019 refers to women only)	26.1	26.7

Percentage of people living with HIV who report experienced stigma and discrimination in the general community in the last 12 months

...

Percentage of people living with HIV who report experiences of HIV-related discrimination in health-care settings	2022
	8.7

GENDER INEQUALITY AND VIOLENCE

Proportion of ever-married or partnered women aged 15–49 years who experienced physical or sexual violence from a male intimate partner in the past 12 months

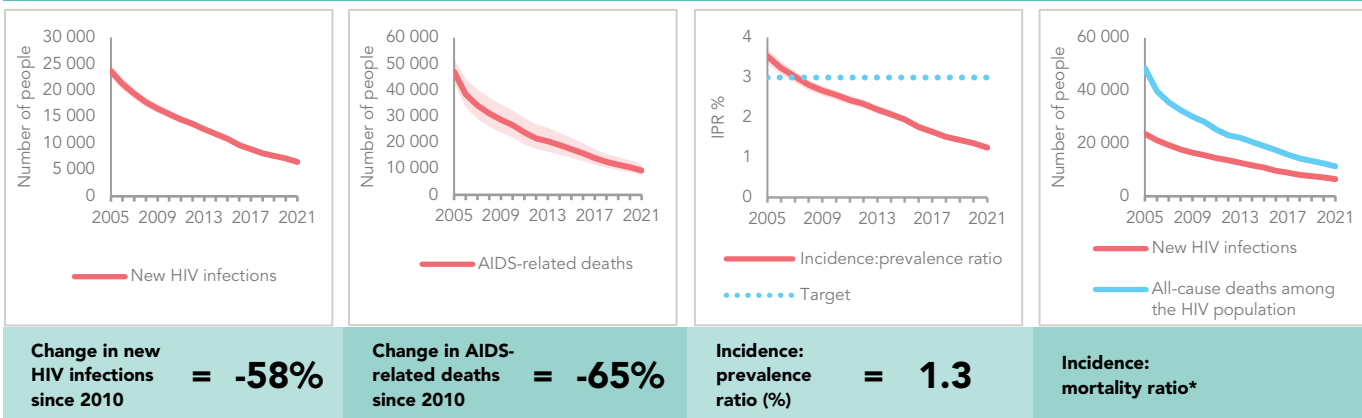
...

Percentage of women and men aged 15 to 49 years who agree that a husband is justified in hitting or beating his wife for specific reasons (Refers to women only)	2019
	7.20

EXPENDITURES

	Financing sources					Total
	Domestic private	Domestic public	International: PEPFAR	International: Global Fund	International: all others	
Last available report: 2021	US\$ 2 047 770	US\$ 256 848 477	US\$ 11 382 023	US\$ 11 807 844	US\$ 3 984 694	US\$ 286 070 808

EPIDEMIC TRANSITION METRICS



* The incidence:mortality ratio is not published if the country has not achieved antiretroviral therapy coverage of 91% or higher (the testing and treatment target for 2025).

KEY POPULATIONS

	Sex workers	Men who have sex with men	People who inject drugs	Transgender people	Prisoners
Estimated size of population	285 900
HIV prevalence	1.1%	11.9%	...	11%	0.7%
HIV testing and status awareness	57.0%	52.8%	38.1%	68.4%	
Antiretroviral therapy coverage	9.3%	...	43%	...	63.6%
Condom use	94.6%	77.8%	39.6%	78.8%	
Coverage of HIV prevention programmes	85.9%	49.5%	...	44.2%	
Avoidance of health care because of stigma and discrimination	5.1%	9.3%	4.7%	...	
Expenditures in US\$ (2021)	1 039 840	3 839 195	1 915 796	277 399	567 499

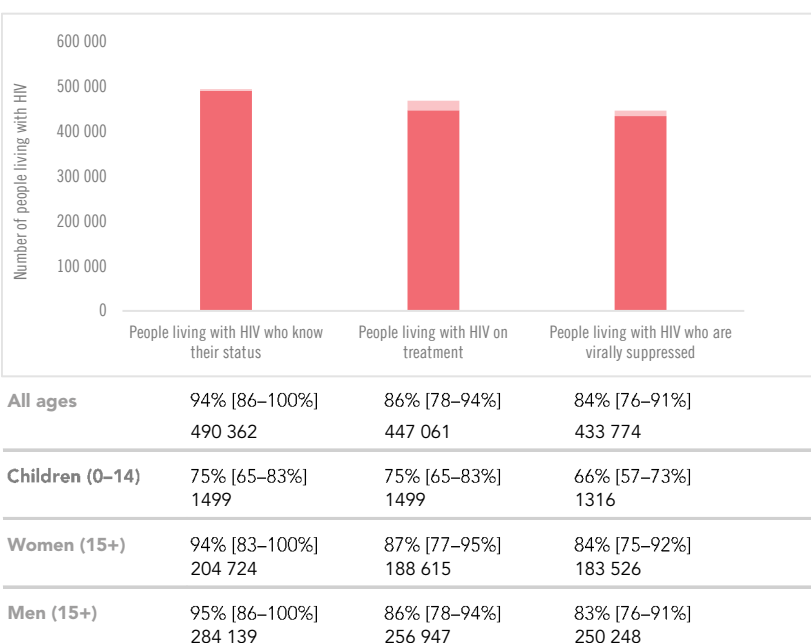
HIV COMORBIDITIES

Estimated number of incident tuberculosis cases among people living with HIV (2020)	9900 [7400 -13 000]
People living with HIV who started TB preventive therapy (2020)	...
Cervical cancer screening of women living with HIV	...
People coinfectd with HIV and hepatitis C virus starting hepatitis C treatment	...

HIV PREVENTION

Adults aged 15+ years with unsuppressed viral load	0.1%
Knowledge of HIV prevention among young people aged 15-24 years	...
— Women	...
— Men	...
Condom use at last sex with a non-marital, non-cohabiting partner among people aged 15-49 years (2017)	
— Women	76.8%
— Men	75%
Women aged 15-49 years who have their demand for family planning satisfied by modern methods (2019)	88%
Men aged 15-49 years who are circumcised	Not applicable
Voluntary medical male circumcisions performed according to national standards	Not applicable
People who received PrEP at least once during the reporting period (2021)	16 837
Harm reduction	
— Use of sterile injecting equipment at last injection (2020)	95%
— Needles and syringes distributed per person who injects (2019)	11
— Coverage of agonist opioid methadone therapy (2021)	8.2%
— Naloxone available (2022)	Yes

HIV TESTING AND TREATMENT CASCADE



ELIMINATION OF VERTICAL TRANSMISSION

	2015	2021
Percentage of pregnant women living with HIV accessing antiretroviral medicines	95% [81-100%]	97% [81-100%]
Final vertical transmission rate including during breastfeeding	2.0% [1.9-2.1%]	1.6% [1.5-1.7%]
Early infant diagnosis	77.5% [67.5-91.4%]	92.2% [79.5- >95%]