

Strategic Actions for Gender Equality

“Diseases thrive in places where there is inequity and lack of opportunity.”

Mark Dybul, Executive Director, Global Fund

In recent years, there have been significant advances in the response to AIDS, tuberculosis and malaria. But gender-related barriers to services and gender inequality continue to undermine efforts to end the three diseases.

The 2030 Agenda for Sustainable Development is a commitment by global leaders that includes gender equality and the empowerment of all women and girls. The Global Fund, through its strategy for 2017-2022, *Investing to End Epidemics*, is aligned with the Sustainable Development Goals.

YOUNG WOMEN MORE LIKELY TO BE HIV-POSITIVE



Young women in sub-Saharan Africa between 15 and 24 are up to eight times more likely to be HIV-positive than males of the same age



WORLDWIDE MORE MEN DIE FROM TB THAN WOMEN

In most parts of the world, more men than women are diagnosed with and die from TB, a consequence of risk and health-seeking behaviors

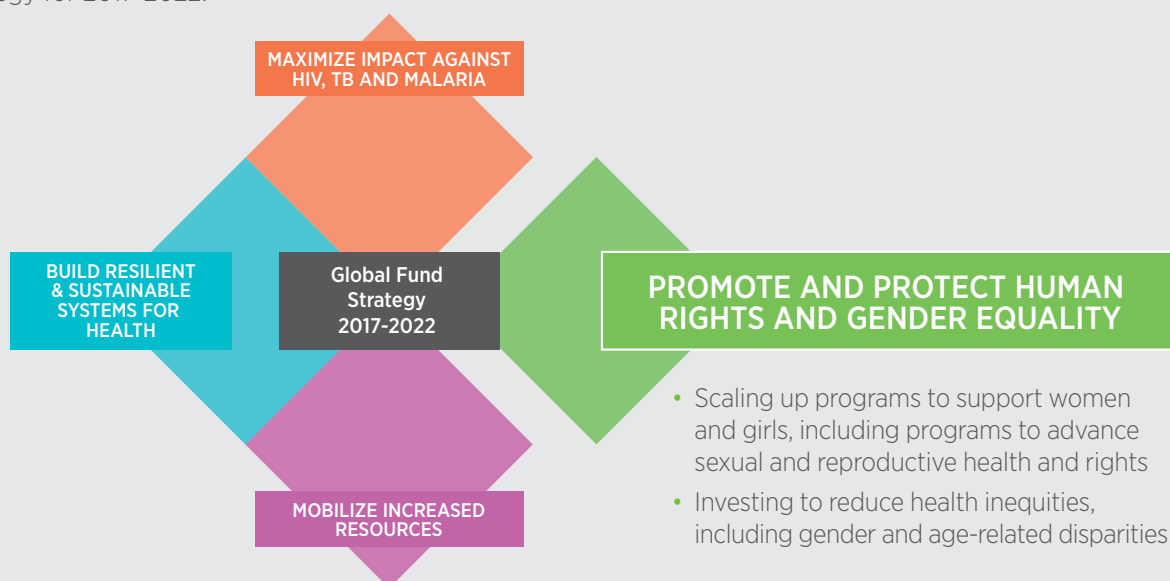


2 DAYS WORK OR SCHOOL LOST

Caring for family members with malaria more frequently falls to the females in the household, who lose on average two days of work or school for each episode

The Global Fund and Gender Equality

The Global Fund was among the earliest and strongest advocates for addressing gender inequalities and the gender-related barriers to health services. In fact, gender equality is one of the four pillars of the Global Fund strategy for 2017-2022.



What is SAGE?

Strategic Actions to Advance Gender Equality (SAGE) is an organization-wide initiative whose purpose is to ensure that the Global Fund is investing in programs that advance gender equality. The purpose of SAGE is to support countries in addressing gender-related barriers by implementing programs that are built on strong leadership and that rest on sound, forward-looking policies and procedures.

“Every time a health program assists a girl to make powerful, positive decision about her health, or prevents a mother from transmitting HIV to her baby, or protects a young child from malaria or a grown man from tuberculosis, we are adding to the momentum of human opportunity and progress.”

*Mark Dybul, Executive Director,
Global Fund*

What SAGE aims to achieve

1.

DATA SYSTEMS:

Systems able to provide data disaggregated by sex and by age to support programmatic and investment decision-making.

2.

INVESTMENTS ACROSS THE THREE DISEASES:

Quality investments in the response to the three diseases that address gender equality, gender- and age-related disparities, and the health needs of women and girls.

3.

INVESTMENTS IN WOMEN AND GIRLS:

Develop guidance to support country investments in quality programming to reduce incidence of HIV among adolescent girls and young women.

4.

PARTNERSHIPS:

Create strong partnerships with national governments, civil society, communities, technical partners and the private sector that will ensure quality and sustainability at the country level.

5.

CAPACITY BUILDING:

Increase the capacity within Global Fund structures to address gender issues and to support country interventions for gender equality

What SAGE is investing in

ADOLESCENT GIRLS AND YOUNG WOMEN

In southern and eastern Africa, adolescent girls and young women are especially vulnerable to HIV and other sexually transmitted infections. They are also vulnerable to co-infection with TB. They are disproportionately affected because of gender- and age-related inequalities that fuel risk while at the same time leaving them without access to appropriate health and social services.

The Global Fund is working with countries, technical partners, civil society and other stakeholders to deliver a comprehensive response to reduce the HIV risk, and TB co-infection risk, for adolescent girls and young women in southern and eastern Africa countries. This includes implementation of adolescent-friendly sexual, reproductive, and maternal health services, cash incentive programs, reaching out to male sexual partners and strengthening approaches to promote human rights and gender equality within programs and at the policy level.

GENDER- AND AGE-RELATED DISPARITIES

Addressing inequities in access to health care requires the collection, analysis and response to sex- and age-disaggregated data. It also requires documenting gender- and human rights-related barriers to services.

The Global Fund will be supporting countries to: promote gender equity-sensitive investments across the three diseases; improve data collection and data systems; scale up interventions that address gender-related barriers to health services; and integrate gender equity-responsive approaches into programs.

This will include a focus on selected countries with an extremely high burden of TB.

What SAGE will be measuring

The Global Fund will track the extent to which an enhanced focus on women and girls results in a decrease in new HIV infections. This effort will focus primarily on countries with large disparities between men and women in numbers of new infections.