



PEPFAR

U.S. President's Emergency Plan for AIDS Relief

Key population-led health services (KP-LHS) critical to PrEP introduction among men who have sex with men (MSM) and transgender women (TGW) in Thailand

Ravipa Vannakit, USAID Regional Development Mission for Asia (RDMA), Bangkok, Thailand

July 24, 2018

rvannakit@usaid.gov

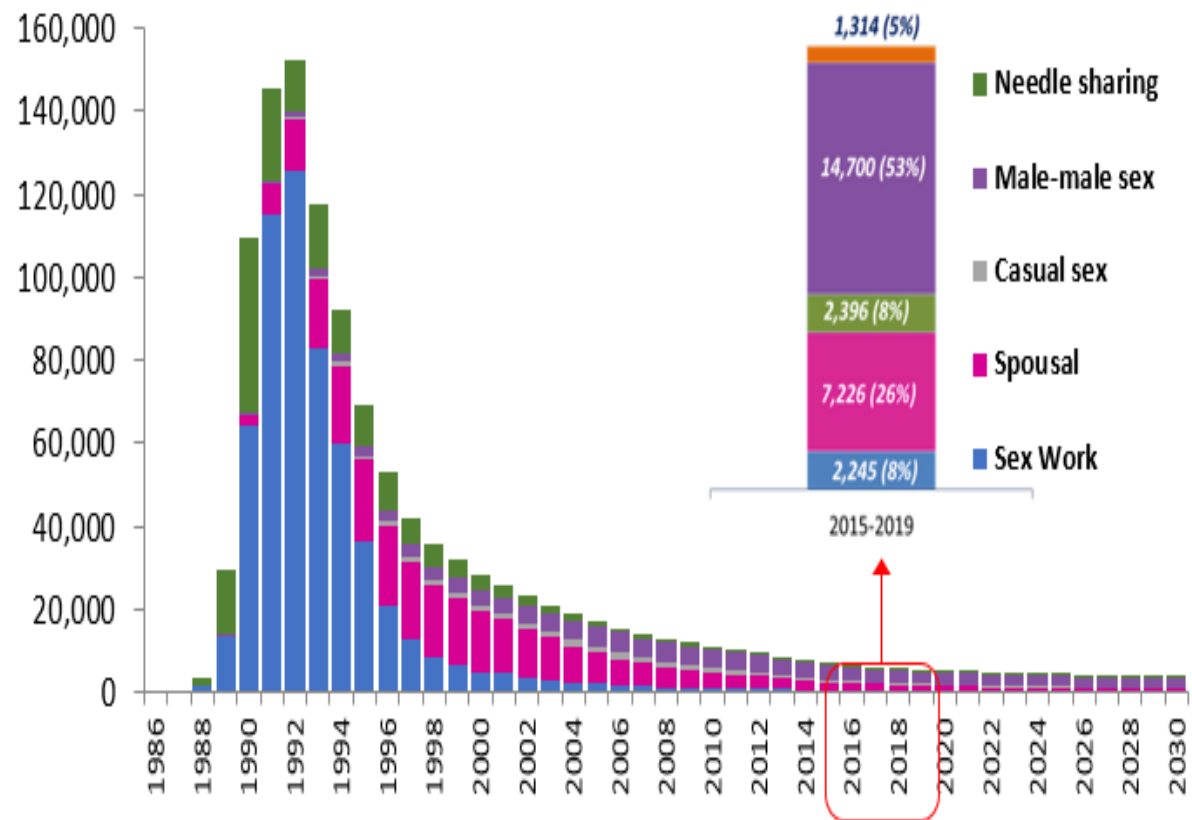
15 YEARS OF SAVING LIVES THROUGH AMERICAN GENEROSITY AND PARTNERSHIPS

#PEPFAR15

PrEP in Thailand: who needs it?

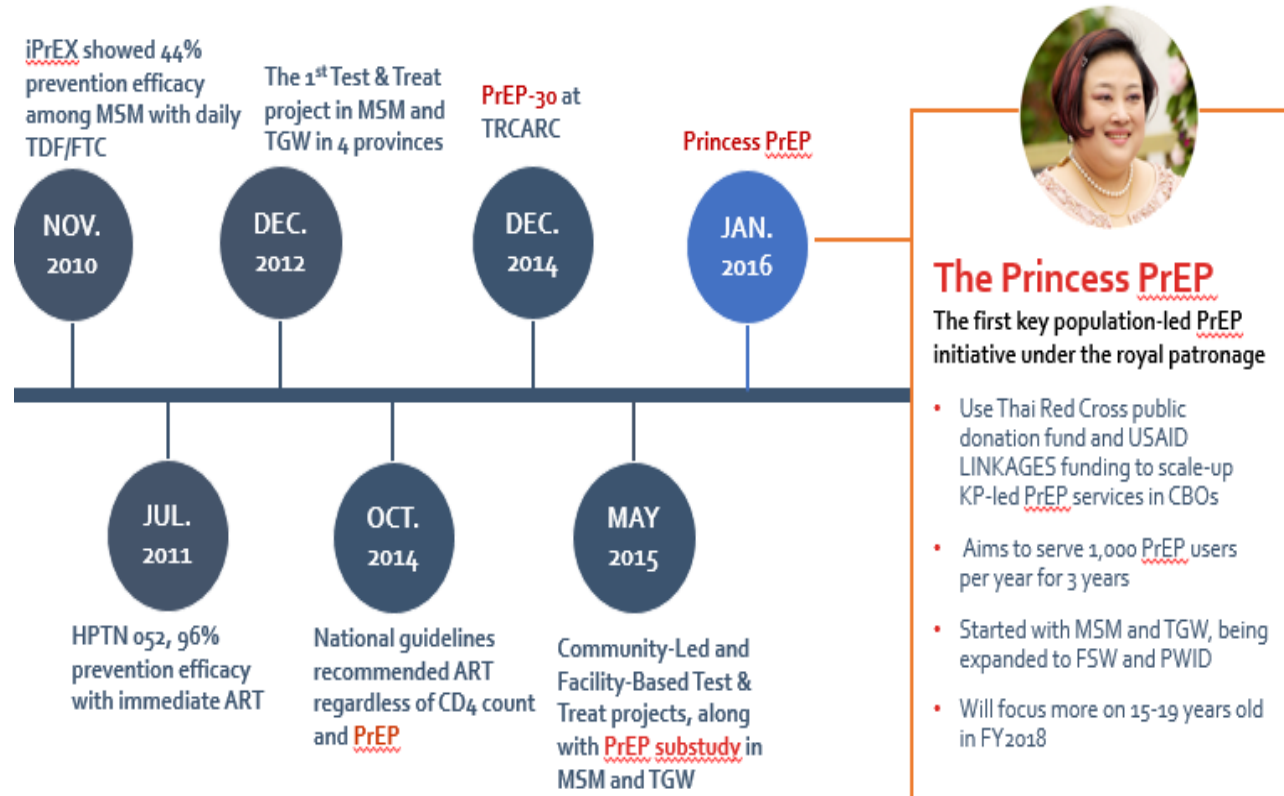
- Thailand has a concentrated HIV epidemic, with men who have sex with men (MSM) estimated to comprise over half of new HIV infections
- They are thus a prime focus for PrEP scale-up

Estimated number of new HIV infections among adults ≥15 years in Thailand



Evolution of PrEP in Thailand

- Thailand involved in **early PrEP development**
- **National guidelines** for PrEP 4 years later
- **PrEP-30** (about US\$ 1 per PrEP dose) starts at Thai Red Cross AIDS Research Centre (TRCARC)
- **PEPFAR Implementation science** in community and government clinics
 - **USAID LINKAGES and Thai Princess** support PrEP scale-up through key population-led health services in 2016 (free PrEP)



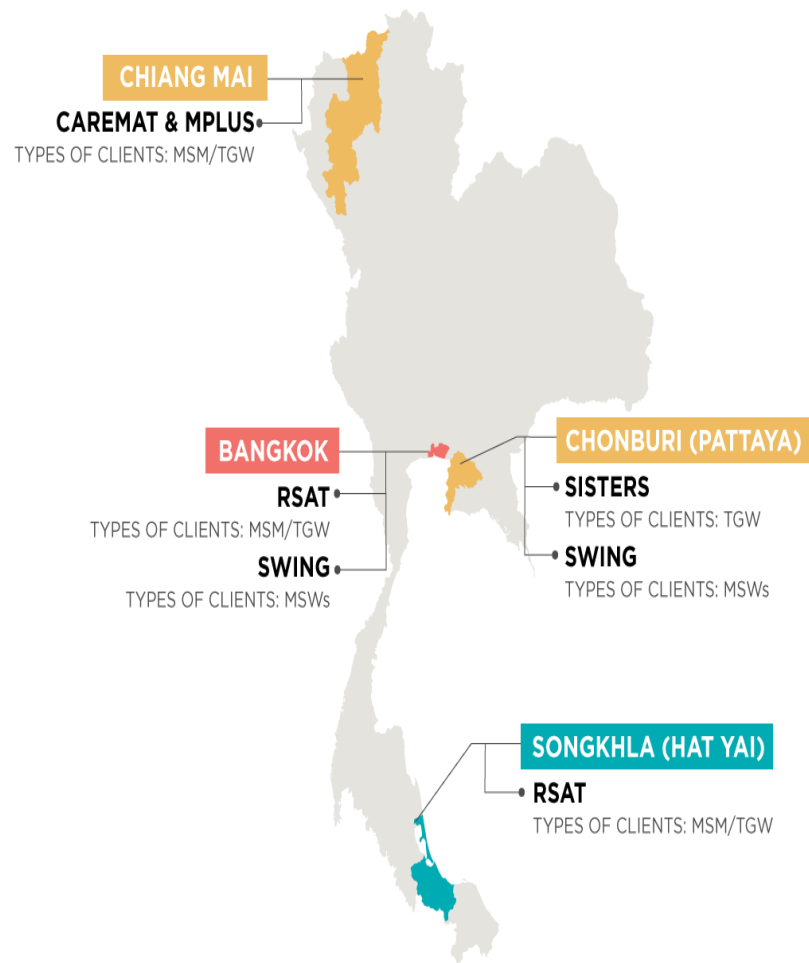
Source: Thai Red Cross AIDS Research Centre

Key population-led health services (KP-LHS) in Thailand: early adopters of innovations, e.g. PrEP

- 7 KP-LHS organizations in provinces in Thailand are “**learning lab**” for many innovations and new approaches in the HIV cascade

- Enhanced peer mobilization (**EPM**)
- Community-based **HIV testing and ART**
- Oral-fluids HIV screening** and self-testing
- PrEP**

- Active partners in research** that provides on-going evidence of innovation effectiveness and implementation led by KP-LHS

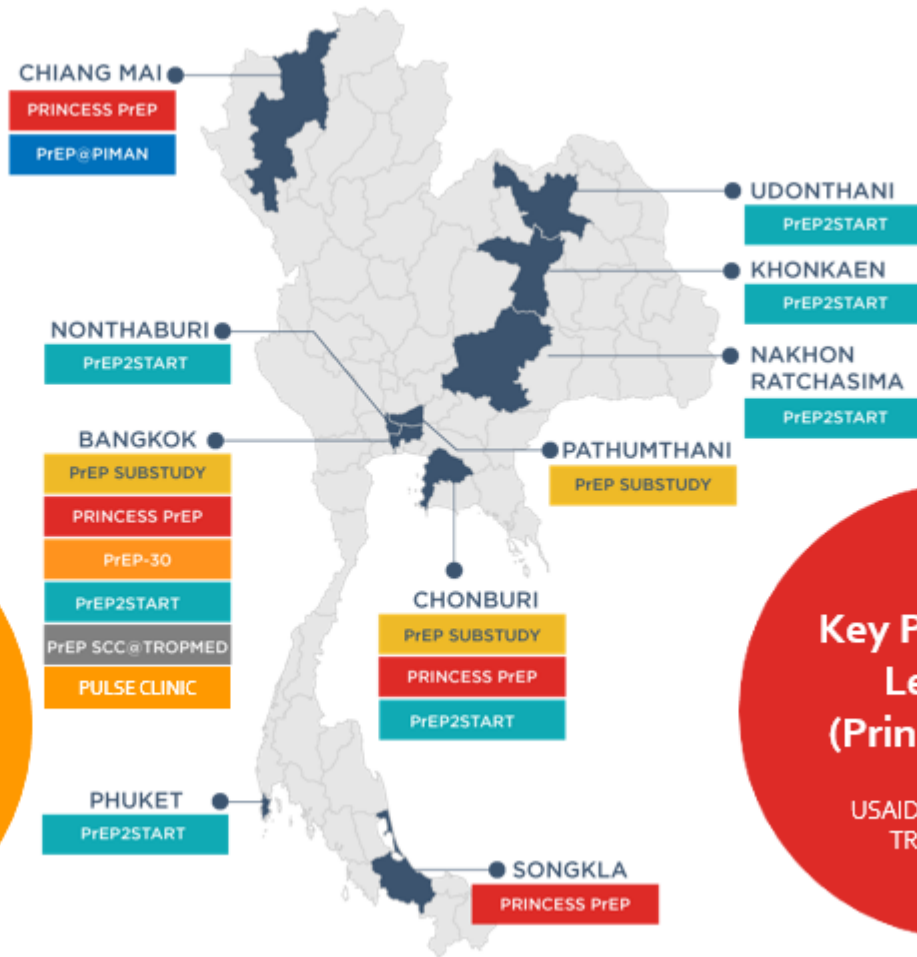


Thailand's PrEP programs as of June 2018

PrEP Implementation Research

USAID LINKAGES and CDC KPIS funds, Silom, Piman

Fee-for-Service PrEP



Hospital-based PrEP by MOPH

CDC technical support

Key Population-Led PrEP (Princess PrEP)

USAID LINKAGES and TRCARC funds

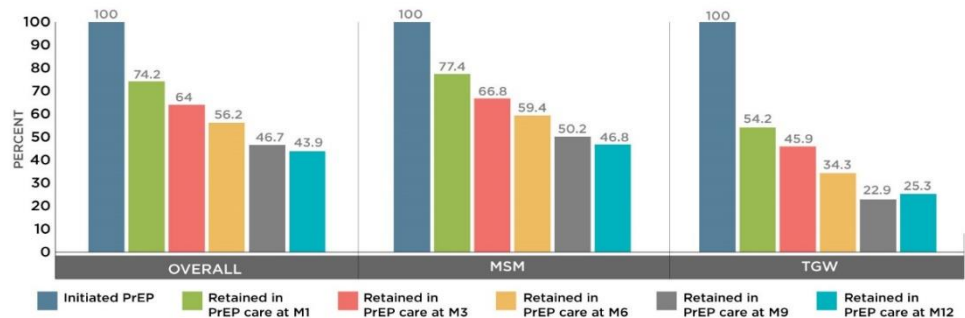
PrEP research in partnership with KP-LHS

Data and evidence on characteristics of PrEP acceptors, adherence, etc.

Characteristics	Overall (N=1,697)	MSM (n=1,467)	TGW (n=230)	P-value
1. Demographic data				
Age (years: Mean (SD))	28.8 (7.2)	29.2 (7.4)	26.1 (5.7)	<0.001 ^a
Thai Nationality (n(%))	1,616 (95.2)	1,406 (95.8)	210 (91.3)	-
Education less than bachelor degree (n(%))	578 (34.1)	427 (29.1)	151 (65.7)	<0.001 ^c
Main occupation as Sex worker (n(%))	175 (10.3)	99 (6.8)	76 (33)	<0.001 ^c
2. Risk characteristics at baseline				
First sexual intercourse < 18 years (n(%))	548 (32.3)	442 (30.1)	106 (46.1)	<0.001 ^c
Male circumcision (n(%))	242 (14.3)	228 (15.5)	14 (6.1)	0.002 ^c
Self-perceived having moderate/high risk of HIV infection in the past 3 months	793 (46.7)	677 (46.2)	116 (50.4)	0.30 ^c
Having multiple partners in the past 3 months	1,085 (63.9)	929 (63.3)	156 (67.8)	0.003 ^c
Had group sex in the past 3 months	358(21.1)	315(21.5)	43(18.7)	0.57 ^c
Condomless in the past 3 months	749 (44.1)	641 (43.7)	108 (47)	0.16 ^c
Drug/stimulant use in the past 3 months	557 (32.8)	495 (33.7)	62 (27)	0.04 ^c
Amphetamine-type stimulant use	105 (6.2)	97 (6.6)	8 (3.5)	0.06 ^c

Data suggests that KP-LHS organizations are reaching high-risk individuals in need of PrEP, e.g. high rates of drug/stimulant use, group sex

Data indicate 43.9% adherence after 12 months; Transgender women show much lower adherence at 25.3%

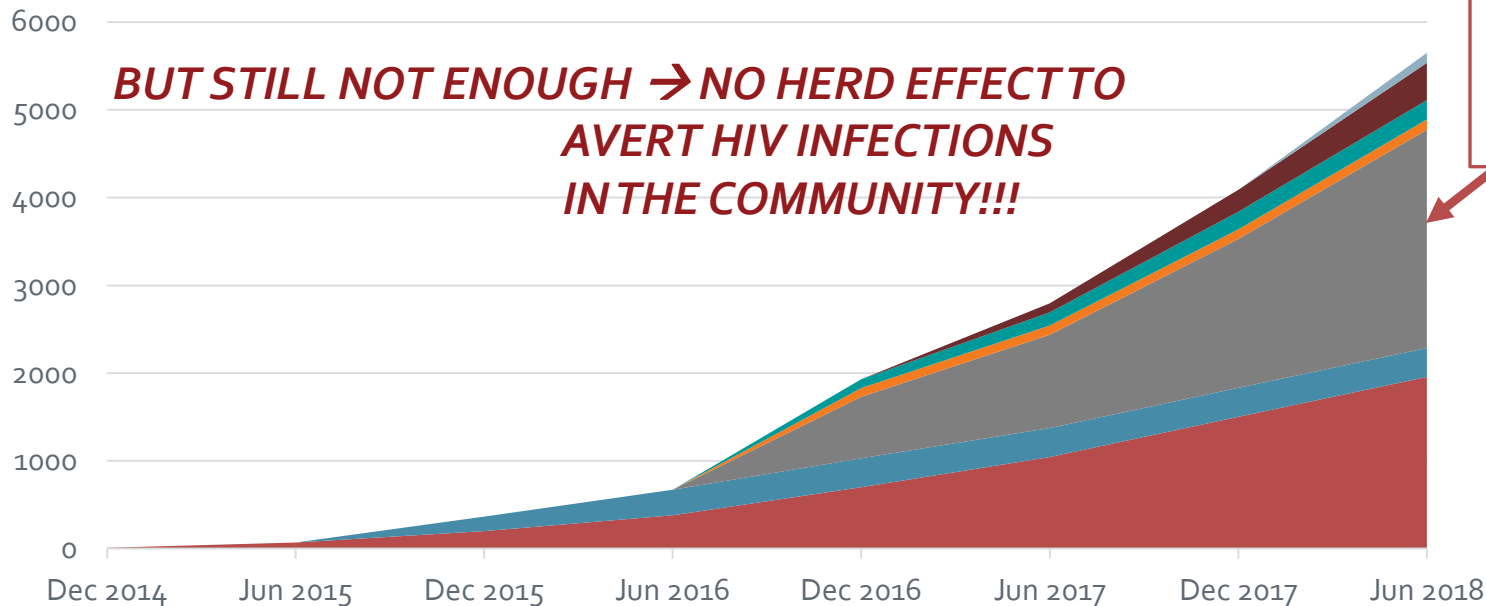


Source: Thai Red Cross AIDS Research Centre/ USAID LINKAGES Project

PrEP scale-up in Thailand: 2014-2018

Numerous government and non-government organizations are now involved in PrEP scale-up

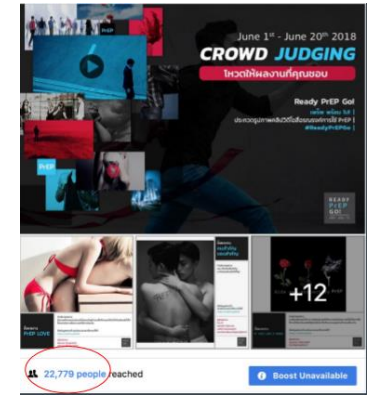
Cumulative number of PrEP users in Thailand



■ PrEP-30 ■ PrEP at SCC@TropMed ■ MOPH PrEP2Start ■ Princess PrEP ■ Bangkok Metropolitan ■ PrEP@Piman

Improved and faster PrEP scale-up necessitates better demand creation, outreach, and HIV testing

Demand creation: social media, crowd-sourcing



Outreach: use of peer mobilizers, on-line outreach



HIV testing – making it easier

oral fluids screening, HIV self-testing



Conclusions and future plans for PrEP in Thailand

- **KP-LHS organizations** are critical for rapid PrEP scale-up, particularly where epidemic growth is concentrated among KPs
- Data suggest that in the early stages of introduction, KP-LHS can quickly add new products such as PrEP and obtain high uptake through their **trusted relationships with KPs**
- PrEP to be supported by National Health Security Organization (NHSO) in Thailand later this year as part of **universal health coverage**
- Advocacy on establishing **national targets** still needed
- More demand creation among **young MSM and TGW** is critical to addressing the needs of this high-incidence population

Acknowledgements



USAID
FROM THE AMERICAN PEOPLE



LINKAGES
*Across the Continuum of HIV
Services for Key Populations*



apcom
ASIA PACIFIC COALITION ON
MALE SEXUAL HEALTH



fhi360
THE SCIENCE OF IMPROVING LIVES