

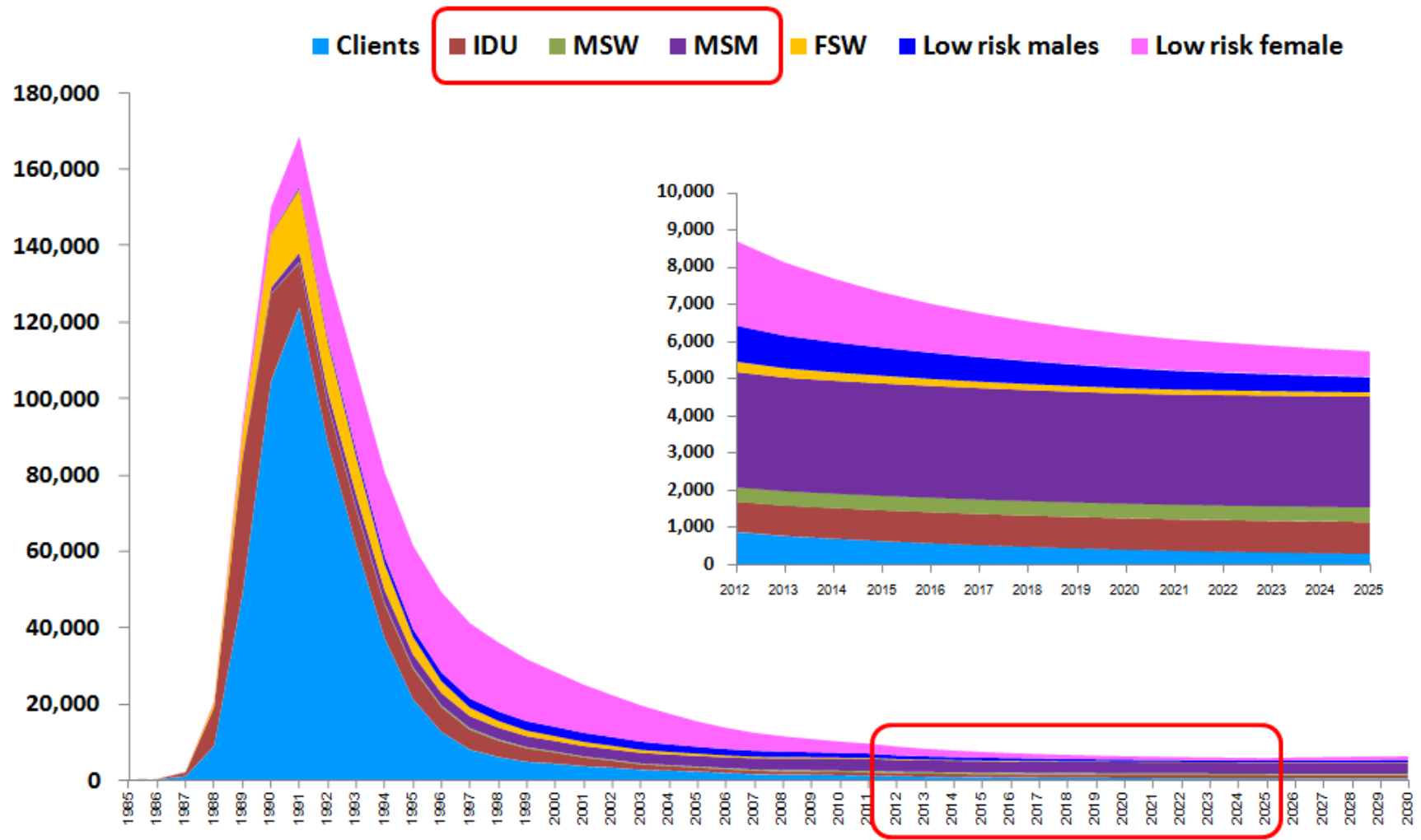
PrEP-30: an innovative model of fee-based pre-exposure prophylaxis for high-risk individuals in Bangkok, Thailand



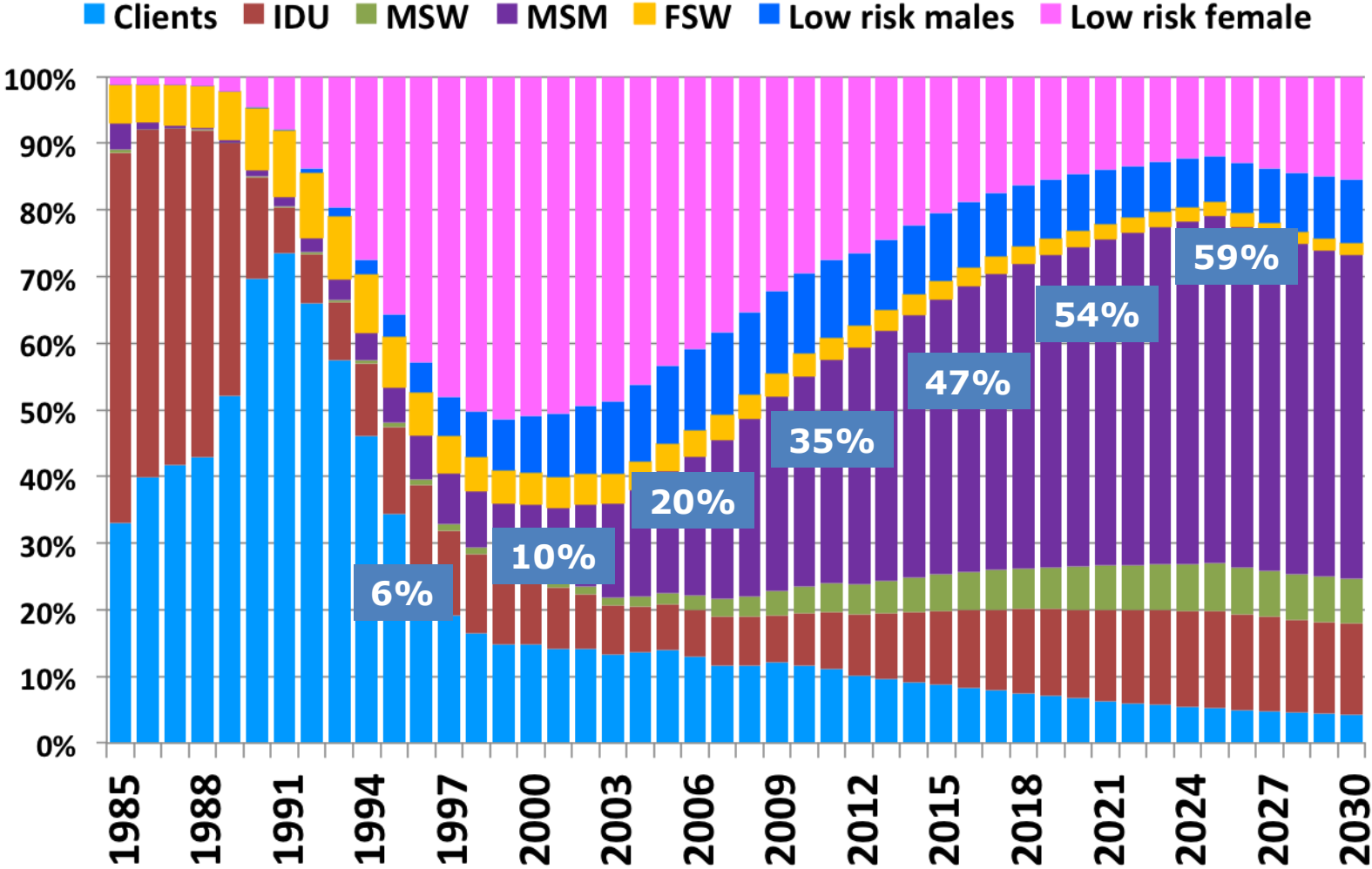
Donn Colby, Mathurada Kongkabpan, Somsong Teeratakulpisarn, Nipat Teeratakulpisarn, Chanjiraporn Pondet, Charnwit Pakam, Prapaipan Plodkratok, Tarandeeep Anand, Praphan Phanuphak, Nittaya Phanuphak

International AIDS Conference 2016
Durban, South Africa

The number of new HIV Infections in Thailand is decreasing every year..

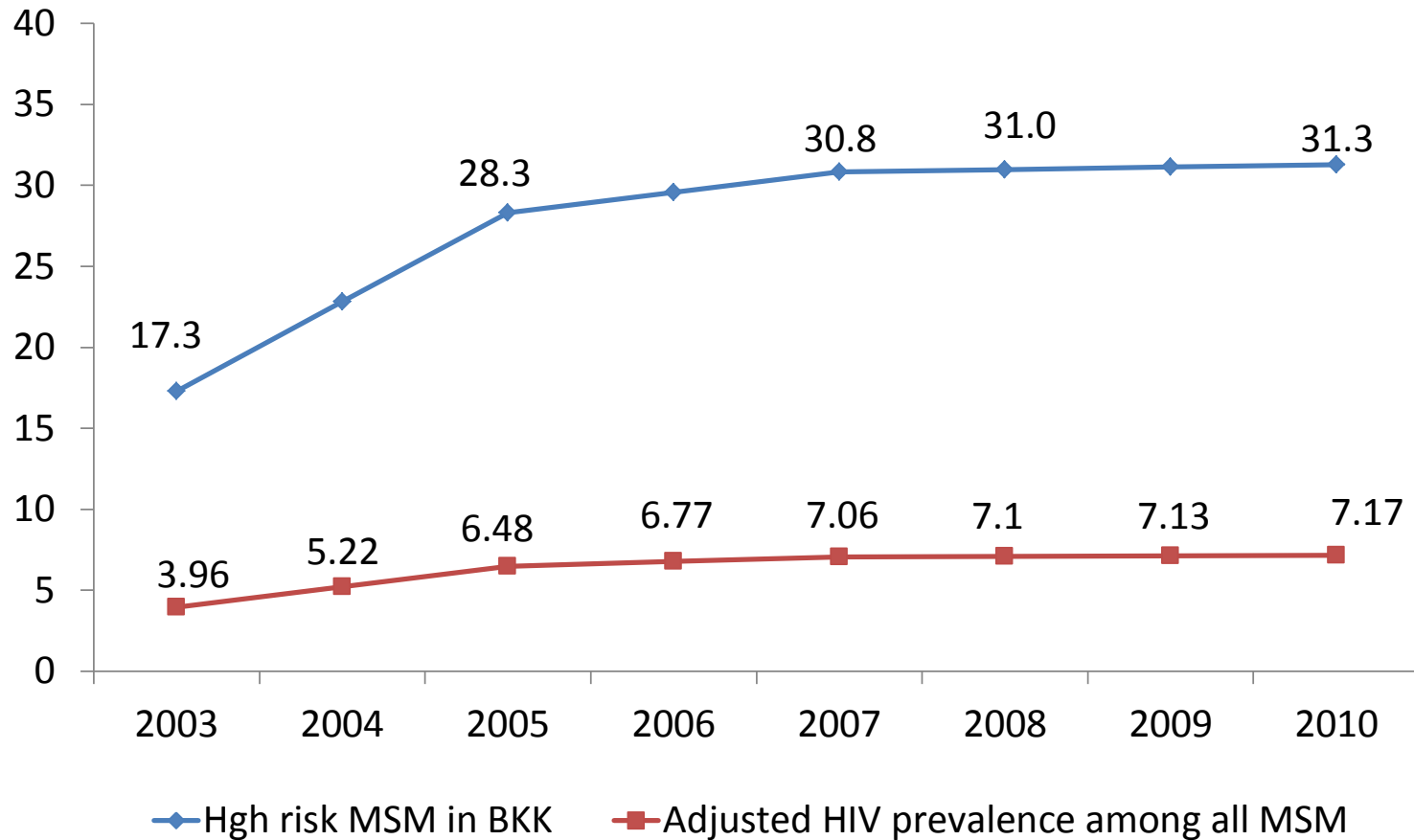


But new infections among MSM are increasing



AIDS Epidemic Model Projections for HIV/AIDS in Thailand: 2010-2030.

Figure 4: Observed HIV prevalence among high risk MSM in Bangkok
VS Adjusted HIV prevalence among all MSM



PrEP in Thailand

- PrEP recommended for “key populations” in the national guidelines (2014)
- No funding for PrEP in public programs
- Public demonstration project for 600 MSM started in 2015
- Princess PrEP supporting 7 CBOs in 4 cities launched in 2016
- Increasing availability in the private sector



The Anonymous Clinic at the Thai Red Cross AIDS Research Centre

- The largest VCT in Thailand with over 35,000 HIV tests in 2015
- MSM HIV prevalence is 20%
- Non-MSM HIV prevalence is 6%
- MSM are 30% of clients, but MSM are 90% of all new HIV infections detected.

Check list of needs to start PrEP service

1. Human resources

- Prescriber (MD or nurse)
- HIV testing counselor
- Pharmacist
- Phlebotomist (blood draw)

2. Laboratory services

- HIV antibody testing
- Creatinine (kidney function)
- HBsAg (hepatitis B)
- Optional: STI testing, anti-HBs

3. Pharmacy services

- PrEP drug (TDF/FTC)

4. Preparation

- Protocol
- Staff training

PrEP-30 at the TRC Anonymous Clinic

- Fee-based PrEP
- Established in an existing VCT/ART clinic using current staff and clinic facilities
- Simple protocol for VCT counselors to screen for “at-risk” clients, introduce PrEP to clients, and refer to doctor if PrEP indicated and client agrees
- PrEP provided at first visit, after HIV test with negative result
- Total cost 30 THB (<US\$1) per day
- Launched December 2014

Table 1: Indications for PrEP for MSM, heterosexual women, and heterosexual men

Any person who:

- age > 18 years
- recent HIV test negative

And has at least one risk factor within the previous 6 months:

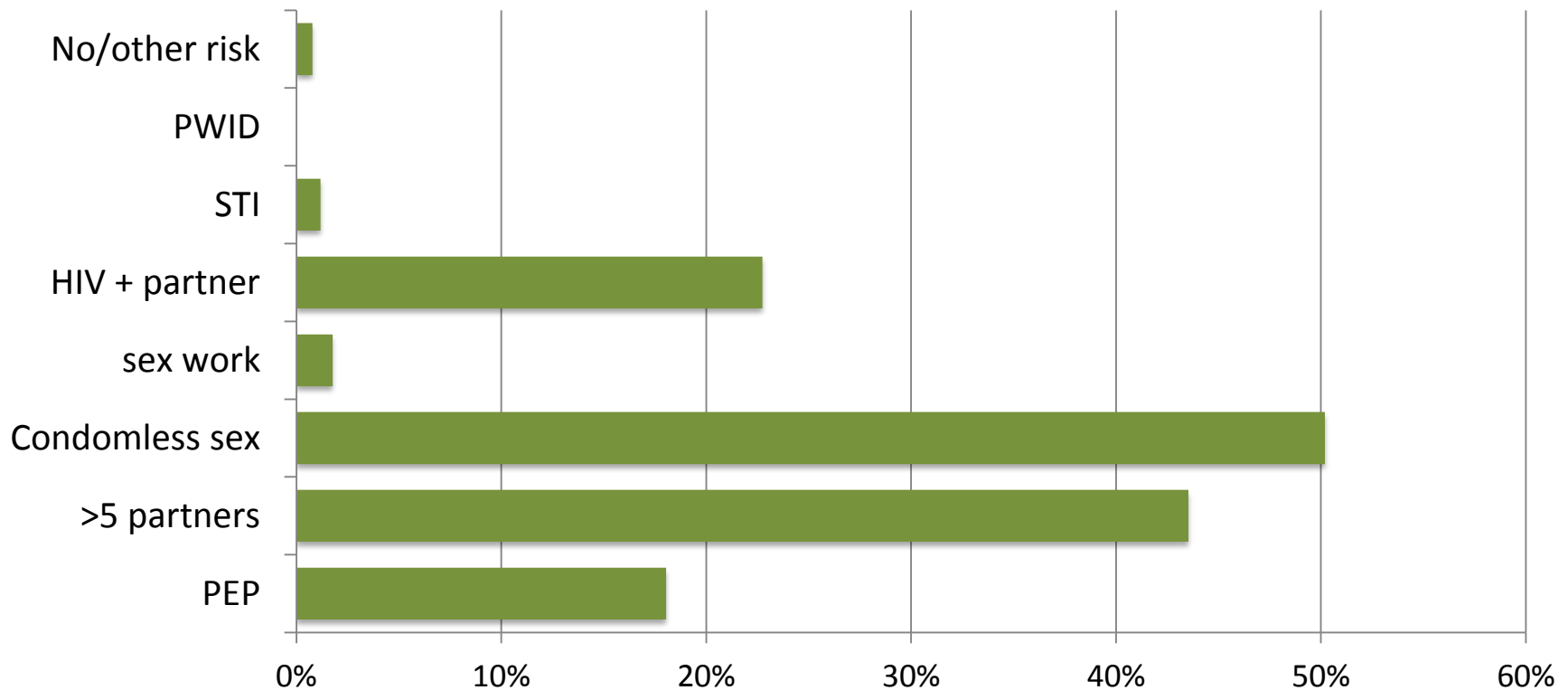
- sex partner known to be HIV positive
- works as commercial sex worker
- use of PEP for sexual exposure
- injection drug use
- any STI (syphilis, gonorrhea, chlamydia)
- ≥ 5 sex partners
- inconsistent condom use with high-risk partners:
 - **MSM:** any insertive or receptive anal sex without condom
 - **Women:** any sex without condom with high-risk male partner (MSM, IDU, multiple female partners)
 - **Heterosexual men:** any sex without condom with high-risk female partner (commercial sex worker, IDU, multiple male partners)

PrEP-30 Follow-up Schedule

Procedures and Testing	First Visit	Months					Every 3 M	Every 6 M	Every 12 M
		1	3	6	9	12			
Screen for PrEP criteria	X								
Provide information on PrEP	X								
Risk-Reduction counseling	X	X	X	X	X	X	X		
TDF/FTC prescription	X	X	X	X	X	X	X		
Laboratory testing									
HIV- antibody test	X	X	X	X	X	X	X		
HBsAg	X								
Creatinine	X		X	X		X		X	
Optional Testing and treatment									
- VDRL	X					X			X
- anti-HBS	X								
- HBV vaccine	<i>as indicated</i>								

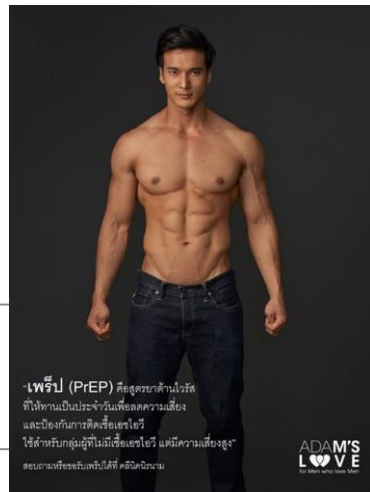
PrEP-30 clients: risk characteristics

- 510 new clients through July 2016
- Median age 32 (range 19-67)
- 97% male, 89% MSM, 2% TGW
- Risk behavior:



PrEP-30

clients increases



New Clients per month

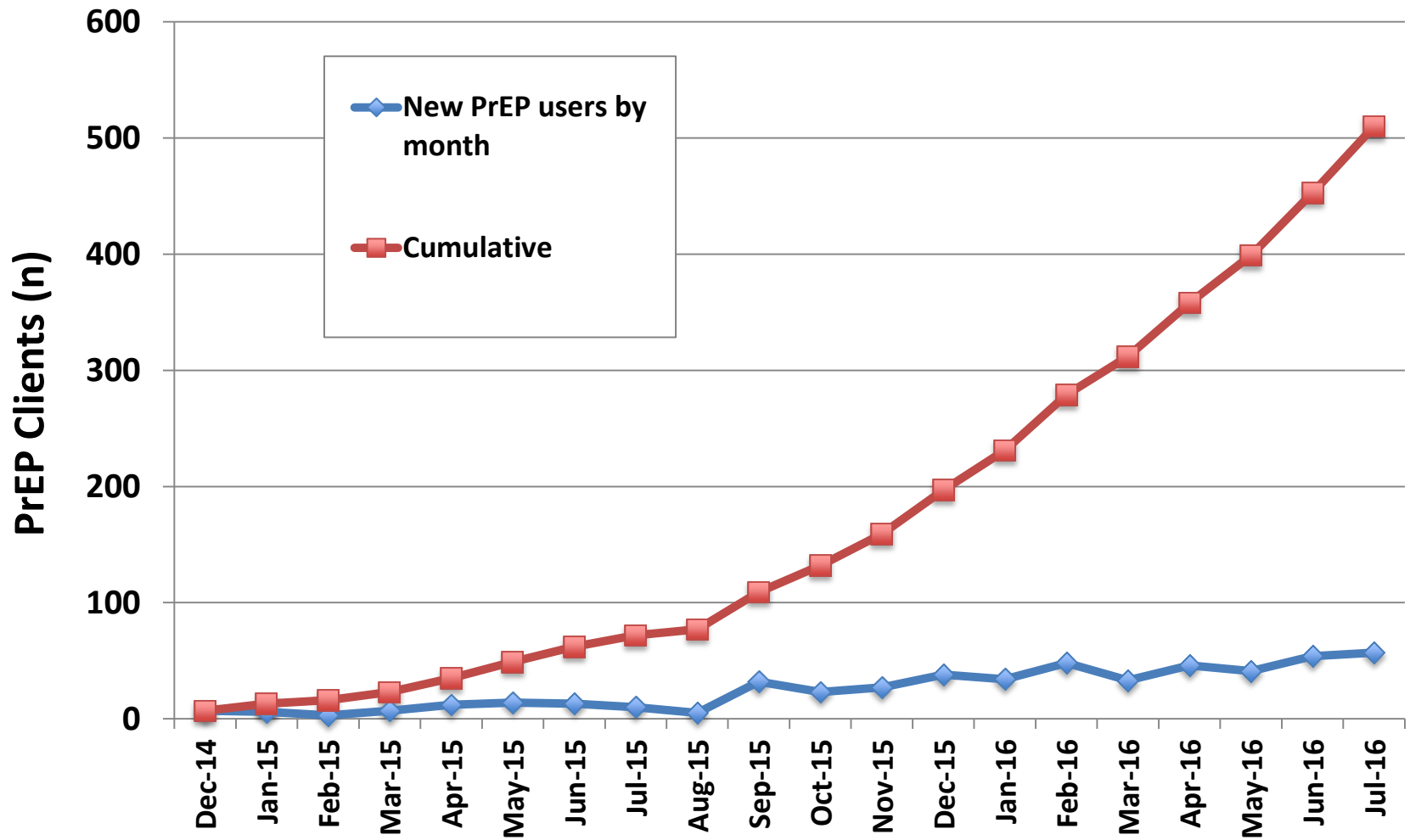
PrEP
ป้องกันได้ถึง 92 %
วันนี้คุณสามารถป้องกันตัวเอง จากการติดเชื้อเอชไอวีได้แล้ว ด้วย "ยาเพร็พ" (PrEP) ความก้าวหน้าล่าสุดทางการแพทย์
By 92%... You can now prevent yourself from getting infected with HIV with PrEP, a latest advancement in medical science!

Online promotions launched

PrEPARING ASIA
A new direction for HIV prevention among MSM in Asia
Regional Meeting in Bangkok



PrEP-30 clients: cumulative number



PrEP-30 results: HIV incidence

- As of April 2016, no PrEP user has become HIV positive
- Total follow-up time = 456 person-months (38 person-years)
- Estimated HIV infections prevented:

Expected HIV infections (6/100 P-Y)*	2.3
Observed HIV infections	0

PrEP-30 results: tolerance

- 23 (5.8%) users stopped PrEP:
 - 17 (4.3 %) stopped due to change in risk
 - 2 (0.5%) stopped due to side effects (dizziness)
 - 4 users (1%) had to stop PrEP due to fall in eGFR.
- 9 (2.3%) users with fall in creatinine requiring close follow-up but able to continue PrEP

Lessons Learned

- PrEP programs can be started quickly using existing facilities and staff.
- MSM are willing to pay for PrEP if delivered at an affordable price.
- PrEP is safe and well-tolerated if monitored following international guidelines.
- Thus far, no client has acquired HIV infection while taking PrEP in Bangkok.