

Tuberculosis profile: Myanmar

Population 2021: 54 million

Estimates of TB burden*, 2021

| | Number | (Rate per 100 000 population) |
|---------------------------|---------------------------|-------------------------------|
| Total TB incidence | 194 000 (134 000-264 000) | 360 (250-490) |
| HIV-positive TB incidence | 14 000 (9 600-19 000) | 26 (18-35) |
| MDR/RR-TB incidence** | 9 700 (5 400-14 000) | 18 (10-26) |
| HIV-negative TB mortality | 32 000 (22 000-43 000) | 59 (42-80) |
| HIV-positive TB mortality | 4 400 (3 100-5 900) | 8.2 (5.8-11) |

Estimated proportion of TB cases with MDR/RR-TB*, 2021

| | |
|--------------------------|----------------|
| New cases | 4.1% (3.8-4.3) |
| Previously treated cases | 19% (18-20) |

Universal health coverage and social protection*

| | |
|--|-------------|
| TB treatment coverage (notified/estimated incidence), 2021 | 33% (24-48) |
| TB patients facing catastrophic total costs, 2015 | 60% (53-66) |
| TB case fatality ratio (estimated mortality/estimated incidence), 2021 | 19% (11-29) |

TB case notifications, 2021

| | |
|--|--------|
| Total new and relapse | 64 410 |
| - % tested with rapid diagnostics at time of diagnosis | |
| - % with known HIV status | 87% |
| - % pulmonary | 91% |
| - % bacteriologically confirmed [^] | 45% |
| - % children aged 0-14 years | 10% |
| - % women (aged ≥15 years) | 32% |
| - % men (aged ≥15 years) | 58% |
| Total cases notified | 65 125 |

TB/HIV care in new and relapse TB patients, 2021

| | Number | (%) |
|---|--------|------|
| Patients with known HIV status who are HIV-positive | 3 972 | 7.1% |
| - on antiretroviral therapy | 2 203 | 55% |

Drug-resistant TB care**, 2021

| | |
|--|-------|
| % of bacteriologically confirmed TB cases tested for rifampicin resistance - New cases [^] | |
| % of bacteriologically confirmed TB cases tested for rifampicin resistance - Previously treated cases [^] | |
| Laboratory-confirmed cases - MDR/RR-TB ^{^^} | 1 679 |
| Patients started on treatment - MDR/RR-TB ^{^^^} | 1 448 |
| Laboratory-confirmed cases - pre-XDR-TB or XDR-TB ^{^^} | 140 |
| Patients started on treatment - pre-XDR-TB or XDR-TB ^{^^^} | 86 |
| MDR/RR-TB cases tested for resistance to any fluoroquinolone | 858 |

Treatment success rate and cohort size

| | Success | Cohort |
|--|---------|--------|
| New and relapse cases registered in 2020 | 87% | 72 721 |
| Previously treated cases, excluding relapse, registered in 2020 | 81% | 1 267 |
| HIV-positive TB cases registered in 2020 | 75% | 5 544 |
| MDR/RR-TB cases started on second-line treatment in 2019 | 77% | 1 962 |
| Pre-XDR-TB/XDR-TB cases started on second-line treatment in 2019 | 81% | 26 |

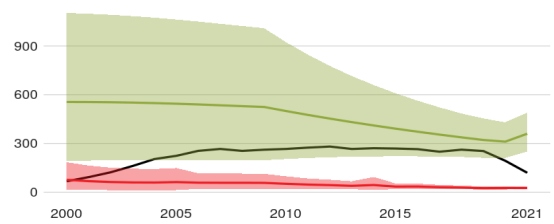
TB preventive treatment, 2021

| | |
|---|--------------|
| % of HIV-positive people (newly enrolled in care) on preventive treatment | |
| % of children (aged < 5 years) household contacts of bacteriologically-confirmed TB cases on preventive treatment | 6.6% (6-7.2) |

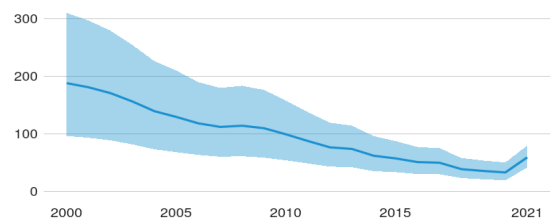
Funding for TB

| | |
|--------------------------------------|-----|
| Funding for TB, 2021 (US\$ millions) | 29 |
| - % domestic funding | 15% |
| - % international funding | 85% |

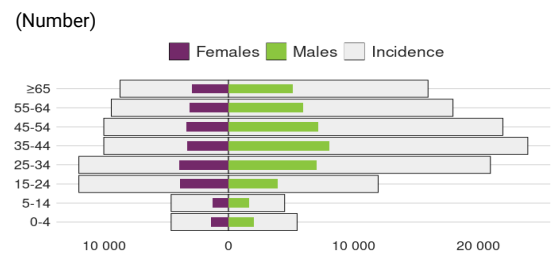
Incidence, New and relapse TB cases notified, HIV-positive TB incidence (Rate per 100 000 population per year)



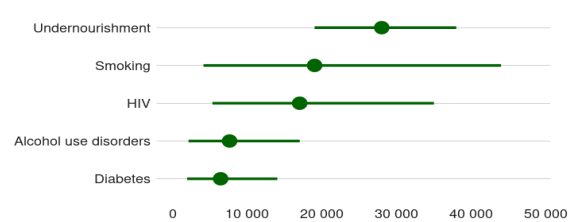
HIV-negative TB mortality (Rate per 100 000 population per year)



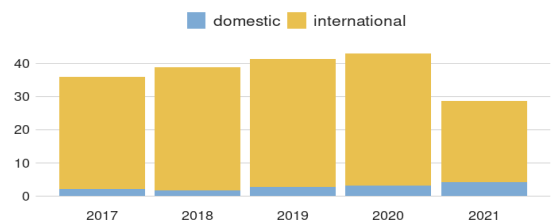
Incidence, Notified cases by age group and sex, 2021 (Number)



Cases attributable to five risk factors, 2021 (Number)



Funding for TB (US\$ millions)



* Estimates of TB burden are produced by WHO in consultation with countries. Ranges represent uncertainty intervals.
** RR is TB resistant to rifampicin (R), MDR is TB resistant to R + isoniazid; pre-XDR is TB resistant to R + any fluoroquinolone
^ Calculated for pulmonary cases only
^^ Includes cases with unknown previous TB treatment history
^^^ Includes patients diagnosed before 2021 and patients who were not laboratory-confirmed

Generated 2022-11-28 by the World Health Organization (<https://www.who.int/teams/global-tuberculosis-programme/data>)