



Tuberculosis Country Profile 2021 Myanmar

Source: Global tuberculosis report 2021. Geneva: World Health Organization

Disclaimer: Tuberculosis country profiles are generated automatically based on data reported by countries and which are held in WHO's global TB database.

Tuberculosis profile: Myanmar

Population 2020: 54 million

Estimates of TB burden*, 2020

	Number	(Rate per 100 000 population)
Total TB incidence	167 000 (112 000-234 000)	308 (206-430)
HIV-positive TB incidence	14 000 (9 400-20 000)	26 (17-36)
HIV-negative TB mortality	18 000 (10 000-27 000)	33 (19-50)
HIV-positive TB mortality	2 900 (1 700-4 400)	5.3 (3.1-8.2)

Universal health coverage and social protection*

TB treatment coverage (notified/estimated incidence), 2020	62% (44-92)
TB patients facing catastrophic total costs, 2015	60% (53-66)
TB case fatality ratio (estimated mortality/estimated incidence), 2020	13% (6-21)

TB case notifications, 2020

Total new and relapse	103 373
- % tested with rapid diagnostics at time of diagnosis	57%
- % with known HIV status	95%
- % pulmonary	90%
- % bacteriologically confirmed [^]	50%
- % children aged 0-14 years	13%
- % women (aged ≥15 years)	31%
- % men (aged ≥15 years)	56%
Total cases notified	105 380

TB/HIV care in new and relapse TB patients, 2020

	Number	(%)
Patients with known HIV status who are HIV-positive	8 272	8.5%
- on antiretroviral therapy	6 133	74%

Drug-resistant TB care**, 2020

% of bacteriologically confirmed TB cases tested for rifampicin resistance - New cases [^]	80%
% of bacteriologically confirmed TB cases tested for rifampicin resistance - Previously treated cases [^]	87%
Laboratory-confirmed cases - MDR/RR-TB ^{^^}	2 368
Patients started on treatment - MDR/RR-TB ^{^^}	2 370
Laboratory-confirmed cases - pre-XDR-TB or XDR-TB ^{^^}	178
Patients started on treatment - pre-XDR-TB or XDR-TB ^{^^}	125
MDR/RR-TB cases tested for resistance to any fluoroquinolone	1 272

Treatment success rate and cohort size

	Success	Cohort
New and relapse cases registered in 2019	88%	130 068
Previously treated cases, excluding relapse, registered in 2019	76%	1 636
HIV-positive TB cases registered in 2019	75%	9 617
MDR/RR-TB cases started on second-line treatment in 2018	78%	2 588
XDR-TB cases started on second-line treatment in 2018	64%	28

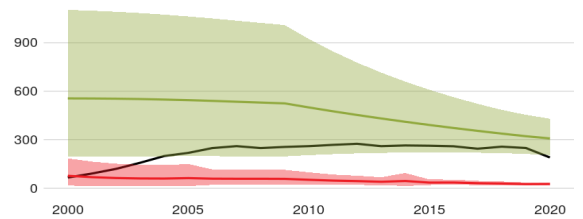
TB preventive treatment, 2020

% of HIV-positive people (newly enrolled in care) on preventive treatment	
% of children (aged < 5 years) household contacts of bacteriologically-confirmed TB cases on preventive treatment	15% (14-16)

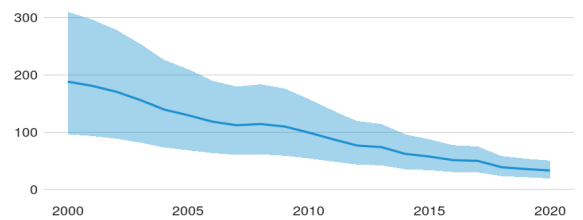
TB financing

National TB budget, 2021 (US\$ millions)	90
- Funding source, domestic	5.4%
- Funding source, international	52%
- unfunded	42%

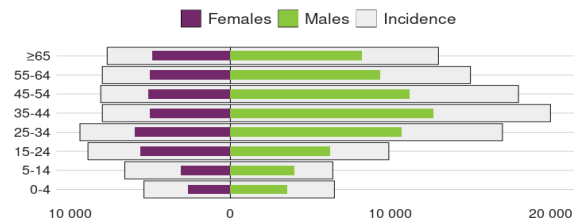
Incidence, New and relapse TB cases notified, HIV-positive TB incidence (Rate per 100 000 population per year)



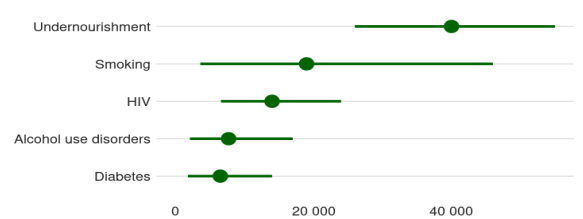
HIV-negative TB mortality (Rate per 100 000 population per year)



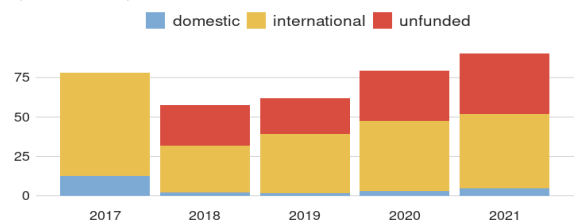
Incidence, Notified cases by age group and sex, 2020 (Number)



Cases attributable to five risk factors, 2020 (Number)



Total budget (US\$ millions)



* Estimates of TB burden are produced by WHO in consultation with countries. Ranges represent uncertainty intervals.
 ** RR is TB resistant to rifampicin (R); MDR is TB resistant to R + isoniazid; pre-XDR is TB resistant to R + any fluoroquinolone
[^] Calculated for pulmonary cases only
^{^^} Includes cases with unknown previous TB treatment history
^{^^^} Includes patients diagnosed before 2020 and patients who were not laboratory-confirmed