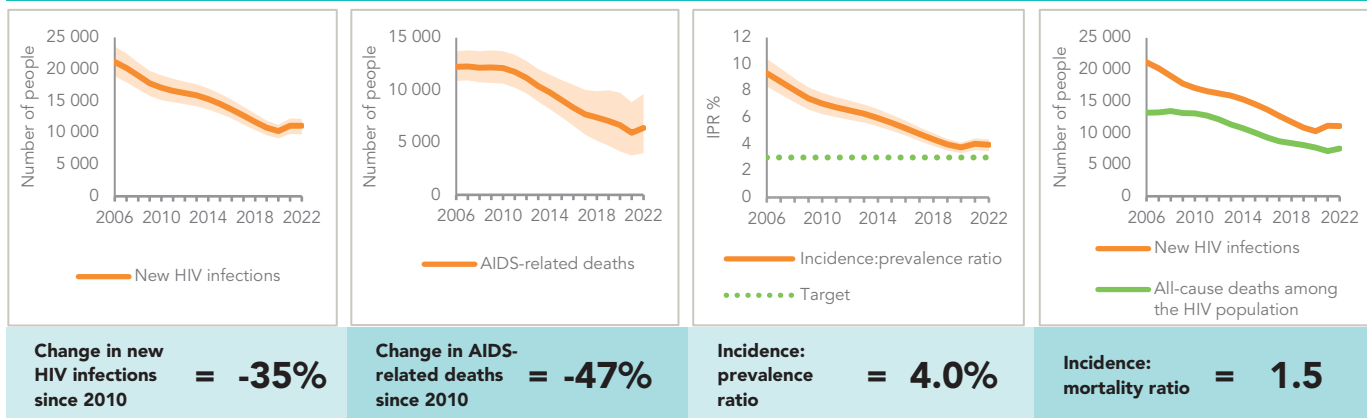


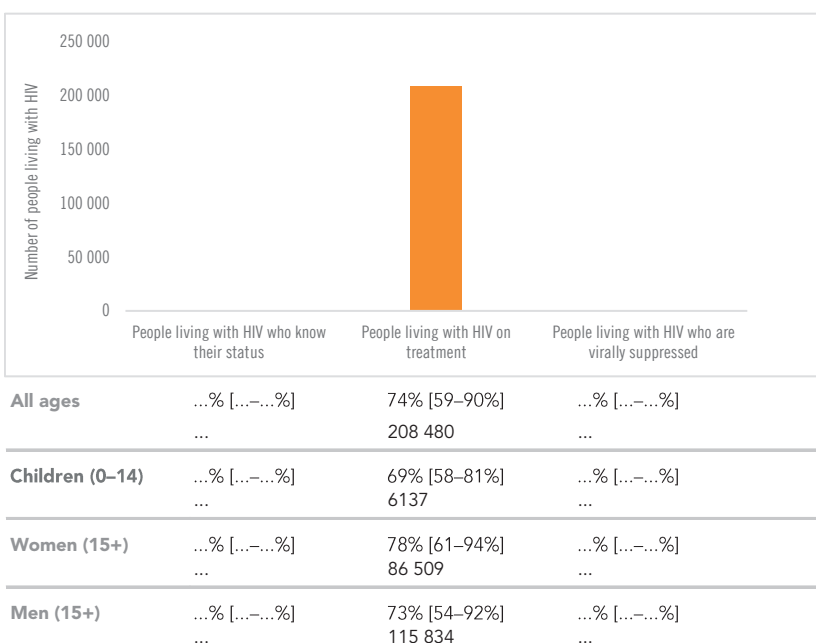
EPIDEMIC TRANSITION METRICS



KEY POPULATIONS

	Sex workers	Men who have sex with men	People who inject drugs	Transgender people	Prisoners
Estimated size of population	75 000	...	116 000
HIV prevalence	8.3%	8.8%	19%	...	3.4%
HIV testing and status awareness	41.0%	31.3%
Antiretroviral therapy coverage	59.1%	44.1%
Condom use	89.9%	56.8%
Coverage of HIV prevention programmes	50.4%	28.6%
Avoidance of health care because of stigma and discrimination
Experience of sexual and/or physical violence

HIV TESTING AND TREATMENT CASCADE



ELIMINATION OF VERTICAL TRANSMISSION

	2015	2022
Percentage of pregnant women living with HIV accessing antiretroviral medicines	74% [63-85%]	43% [36-51%]
Final vertical transmission rate including during breastfeeding	16.8% [15.6-18%]	24.2% [21.9-28.2%]
Early infant diagnosis	16% [14-19%]	12% [10-14%]

HIV COMORBIDITIES

Estimated number of incident tuberculosis cases among people living with HIV (2021)	14 000 [9600 -19 000]
People living with HIV who started TB preventive therapy (2021)	...
Cervical cancer screening of women living with HIV	...
People coinfectd with HIV and hepatitis C virus starting hepatitis C treatment	...

HIV PREVENTION

Adults aged 15+ years with unsuppressed viral load	...
Knowledge of HIV prevention among young people aged 15-24 years	...
— Women	...
— Men	...
Condom use at last sex with a non-marital, non-cohabiting partner among people aged 15-49 years	...
— Women	...
— Men	...
Women aged 15-49 years who have their demand for family planning satisfied by modern methods (2016)	...
Men aged 15-49 years who are circumcised	Not applicable
Voluntary medical male circumcisions performed according to national standards	Not applicable
People who received PrEP at least once during the reporting period (2022)	2702
Harm reduction	...
— Use of sterile injecting equipment at last injection	...
— Needles and syringes distributed per person who injects (2022)	323
— Coverage of opioid substitution therapy (2022)	22.3%
— Naloxone available (2023)	...