

EPIDEMIC ESTIMATES

	2010	2015	2018
New HIV infections			
New HIV infections (all ages)	16 000 [14 000–17 000]	13 000 [12 000–15 000]	11 000 [9500–12 000]
New HIV infections (0–14)	1300 [940–1800]	1100 [920–1300]	840 [680–990]
New HIV infections (women, 15+)	5200 [4600–5900]	3700 [3300–4200]	2800 [2500–3200]
New HIV infections (men, 15+)	9000 [8000–9900]	8400 [7500–9200]	7000 [6200–7700]
HIV incidence per 1000 population	0.31 [0.28–0.35]	0.26 [0.23–0.28]	0.2 [0.18–0.22]
AIDS-related deaths			
AIDS-related deaths (all ages)	11 000 [9600–13 000]	9500 [7400–12 000]	7800 [5900–11 000]
AIDS-related deaths (0–14)	900 [690–1100]	520 [<500–620]	<500 [<500– <500]
AIDS-related deaths (women, 15+)	2000 [1700–2500]	2200 [1700–3100]	2100 [1600–3000]
AIDS-related deaths (men, 15+)	8200 [7100–9400]	6700 [5300–8500]	5300 [3900–7500]
People living with HIV			
People living with HIV (all ages)	220 000 [190 000–260 000]	230 000 [210 000–270 000]	240 000 [210 000–270 000]
People living with HIV (0–14)	8200 [6900–9600]	9600 [8300–11 000]	9800 [8400–11 000]
People living with HIV (women, 15+)	76 000 [66 000–87 000]	84 000 [75 000–96 000]	87 000 [78 000–98 000]
People living with HIV (men, 15+)	140 000 [120 000–160 000]	140 000 [120 000–160 000]	140 000 [120 000–160 000]
HIV prevalence (15–49)	0.8 [0.6–0.9]	0.8 [0.6–0.9]	0.8 [0.6–0.9]

LAWS AND POLICIES

Laws criminalizing the transmission of, non-disclosure of or exposure to HIV transmission	No
Criminalization of sex work among consenting adults	Any criminalization or punitive regulation of sex work
Criminalization of same-sex sexual acts	Yes, imprisonment (14 years - life)
Drug use or possession for personal use is an offence	Possession of drugs for personal use or drug use and/or consumption are specified as criminal offences
Criminalization of transgender people	Neither criminalized nor prosecuted
Laws or policies restricting the entry, stay and residence of people living with HIV	No
Parental consent for adolescents to access HIV testing	No
Spousal consent for married women to access sexual and reproductive health services	No
Mandatory HIV testing for marriage, work or residence permits or for certain groups	Yes

STIGMA AND DISCRIMINATION

Percentage of women and men aged 15–49 years who report discriminatory attitudes towards people living with HIV	2016 63.3
Percentage of people living with HIV denied health services because of their HIV status in the last 12 months	
Percentage of people living with HIV who reported a health-care professional told others about their HIV status without their consent	

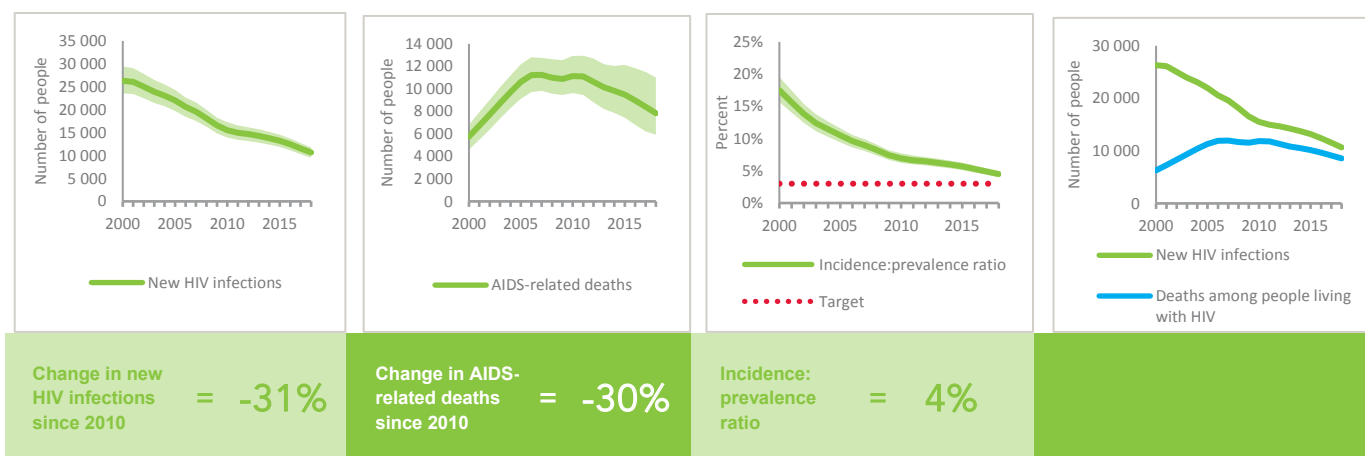
VIOLENCE

Proportion of ever-married or partnered women aged 15–49 years who experienced physical or sexual violence from a male intimate partner in the past 12 months	2016 11
---	-------------------

EXPENDITURES

	Financing sources					Total
	Domestic private	Domestic public	International: PEPFAR	International: Global Fund	International: all others	
Last available report: 2017	\$2 382 058	\$20 212 929	\$12 248 661	\$51 148 388	\$20 477 207	\$106 469 242

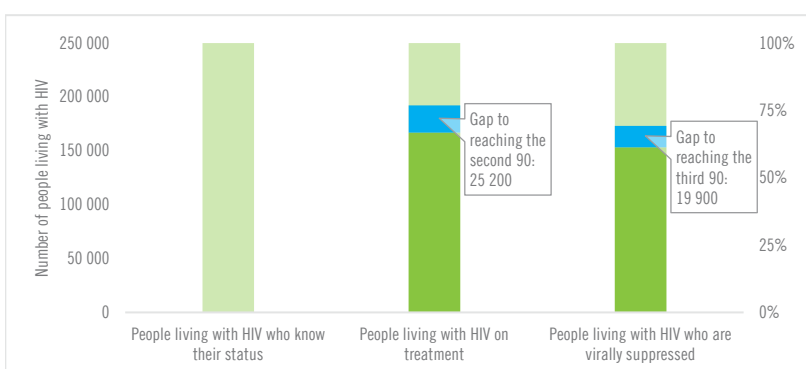
EPIDEMIC TRANSITION METRICS



KEY POPULATIONS

	Sex workers	Gay men and other men who have sex with men	People who inject drugs	Transgender people	Prisoners
Estimated size of population
HIV prevalence	5.6%	6.4%	19.0%	...	7.7%
Know their HIV status	44.6%	52.4%	27.9%
Antiretroviral therapy coverage	14.1%
Condom use	81.1%	77.1%	21.9%
Coverage of HIV prevention programmes	34.2%
Avoidance of health care because of stigma and discrimination
Expenditures (0)

HIV TESTING AND TREATMENT CASCADE



	...	70% [63–79%] 167 000	65% [58–73%]
All ages	...% [...–...%]		
Children (0–14)	...% [...–...%]	80% [69–93%] 7900	67% [57–77%]
Women (15+)	...% [...–...%]	81% [73–91%] 70 500	75% [67–84%]
Men (15+)	...% [...–...%]	63% [56–72%] 88 600	58% [52–66%]

ELIMINATION OF MOTHER-TO-CHILD TRANSMISSION

	2010	2018
Percentage of pregnant women living with HIV accessing antiretroviral medicines	34% [28–41%]	80% [69–89%]
Early infant diagnosis	1.1% [<1–1.3%]	25.0% [22.2–28.8%]

HIV COMORBIDITIES

Estimated number of incident tuberculosis cases among people living with HIV (2017)	17 000 [12 000–22 000]
People living with HIV who started TB preventive therapy (2017)	17.5%
Cervical cancer screening of women living with HIV	...
People coinfecting with HIV and hepatitis B virus receiving combined treatment (2018)	82%
People coinfecting with HIV and hepatitis C virus starting hepatitis C treatment	...

HIV PREVENTION

Adults aged 15+ years with unsuppressed viral load	0.2%
Knowledge of HIV prevention among young people aged 15–24 years (2016)	
— Women	16.2%
— Men	17.8%
Condom use at last sex with a non-marital, non-cohabiting partner (2016)	
— Women	...
— Men	77.4%
Women aged 15–49 years who have their demand for family planning satisfied by modern methods (2016)	74.9%
Men aged 15–49 years who are circumcised (2016)	Not applicable
Voluntary medical male circumcisions performed according to national standards	Not applicable
People who received PrEP at least once during the reporting period	...
Harm reduction	
— Use of sterile injecting equipment at last injection (2017)	90.8%
— Needles and syringes distributed per person who injects (2018)	351
— Coverage of opioid substitution therapy (2018)	17.2%
— Naloxone available (2019)	No
— Safe injection rooms available (2019)	No