



# **Tuberculosis Country Profile 2021 Mongolia**

*Source: Global tuberculosis report 2021. Geneva: World Health Organization*

*Disclaimer: Tuberculosis country profiles are generated automatically based on data reported by countries and which are held in WHO's global TB database.*

# Tuberculosis profile: Mongolia

Population 2020: 3.3 million

## Estimates of TB burden\*, 2020

	Number	(Rate per 100 000 population)
Total TB incidence	14 000 (7 300-24 000)	437 (224-719)
HIV-positive TB incidence	17 (3-45)	0.52 (0.08-1.4)
HIV-negative TB mortality	320 (160-540)	9.8 (4.9-17)
HIV-positive TB mortality	9 (5-16)	0.28 (0.14-0.48)

## Universal health coverage and social protection\*

TB treatment coverage (notified/estimated incidence), 2020	27% (16-53)
TB patients facing catastrophic total costs, 2017	69% (64-74)
TB case fatality ratio (estimated mortality/estimated incidence), 2020	3% (1-5)

## TB case notifications, 2020

Total new and relapse	3 861
- % tested with rapid diagnostics at time of diagnosis	43%
- % with known HIV status	87%
- % pulmonary	64%
- % bacteriologically confirmed <sup>^</sup>	78%
- % children aged 0-14 years	12%
- % women (aged ≥15 years)	39%
- % men (aged ≥15 years)	49%
Total cases notified	4 091

## TB/HIV care in new and relapse TB patients, 2020

	Number	(%)
Patients with known HIV status who are HIV-positive	4	0.12%
- on antiretroviral therapy	4	100%

## Drug-resistant TB care\*\*, 2020

% of bacteriologically confirmed TB cases tested for rifampicin resistance - New cases <sup>^</sup>	100%
% of bacteriologically confirmed TB cases tested for rifampicin resistance - Previously treated cases <sup>^</sup>	89%
Laboratory-confirmed cases - MDR/RR-TB <sup>^^</sup>	179
Patients started on treatment - MDR/RR-TB <sup>^^</sup>	187
Laboratory-confirmed cases - pre-XDR-TB or XDR-TB <sup>^^</sup>	8
Patients started on treatment - pre-XDR-TB or XDR-TB <sup>^^</sup>	8
MDR/RR-TB cases tested for resistance to any fluoroquinolone	143

## Treatment success rate and cohort size

	Success	Cohort
New and relapse cases registered in 2019	88%	4 111
Previously treated cases, excluding relapse, registered in 2019	77%	215
HIV-positive TB cases registered in 2019	75%	4
MDR/RR-TB cases started on second-line treatment in 2018	66%	191
XDR-TB cases started on second-line treatment in 2018	63%	8

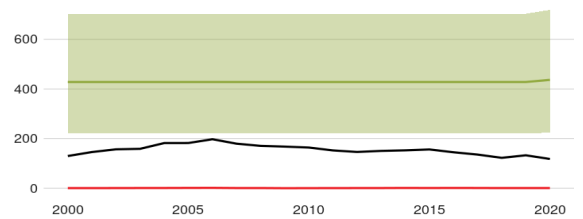
## TB preventive treatment, 2020

% of HIV-positive people (newly enrolled in care) on preventive treatment	0%
% of children (aged < 5 years) household contacts of bacteriologically-confirmed TB cases on preventive treatment	8.4% (7.7-9.2)

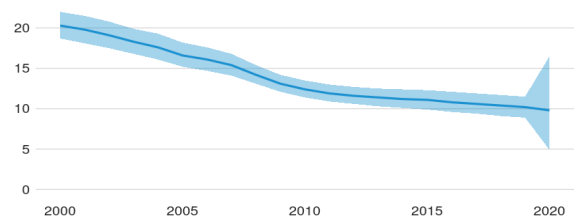
## TB financing

National TB budget, 2021 (US\$ millions)	7
- Funding source, domestic	63%
- Funding source, international	37%
- unfunded	0%

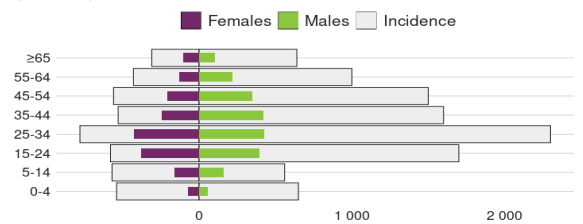
## Incidence, New and relapse TB cases notified, HIV-positive TB incidence (Rate per 100 000 population per year)



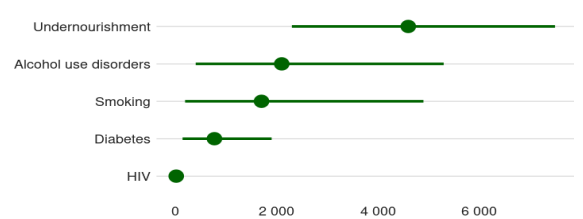
## HIV-negative TB mortality (Rate per 100 000 population per year)



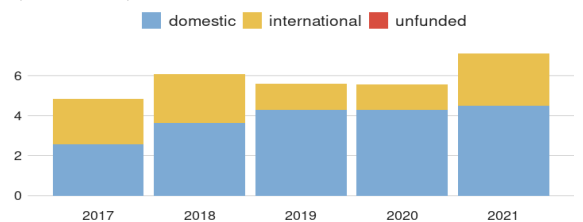
## Incidence, Notified cases by age group and sex, 2020 (Number)



## Cases attributable to five risk factors, 2020 (Number)



## Total budget (US\$ millions)



\* Estimates of TB burden are produced by WHO in consultation with countries. Ranges represent uncertainty intervals.  
 \*\* RR is TB resistant to rifampicin (R); MDR is TB resistant to R + isoniazid; pre-XDR is TB resistant to R + any fluoroquinolone  
<sup>^</sup> Calculated for pulmonary cases only  
<sup>^^</sup> Includes cases with unknown previous TB treatment history  
<sup>^^^</sup> Includes patients diagnosed before 2020 and patients who were not laboratory-confirmed