

Malaysia

Population 2017

32 million

Estimates of TB burden*, 2017	Number (thousands)	Rate (per 100 000 population)
Mortality (excludes HIV+TB)	1.3 (1.1–1.4)	4 (3.5–4.5)
Mortality (HIV+TB only)	0.3 (0.22–0.38)	0.93 (0.69–1.2)
Incidence (includes HIV+TB)	29 (25–34)	93 (79–107)
Incidence (HIV+TB only)	1.8 (1.5–2.1)	5.7 (4.8–6.6)
Incidence (MDR/RR-TB)**	0.57 (0.42–0.73)	1.8 (1.3–2.3)

Estimated TB incidence by age and sex (thousands)*, 2017

	0-14 years	> 14 years	Total
Females	2 (1.9–2)	9.2 (8.4–9.9)	11 (10–12)
Males	1.8 (1.7–1.9)	16 (15–18)	18 (16–20)
Total	3.8 (3.6–4)	26 (22–29)	29 (25–34)

TB case notifications, 2017

Total cases notified	26 168
Total new and relapse	25 464
- % tested with rapid diagnostics at time of diagnosis	
- % with known HIV status	87%
- % pulmonary	85%
- % bacteriologically confirmed among pulmonary	74%

Universal health coverage and social protection

TB treatment coverage (notified/estimated incidence), 2017	87% (75–100)
TB patients facing catastrophic total costs	
TB case fatality ratio (estimated mortality/estimated incidence), 2017	0.05 (0.04–0.06)

TB/HIV care in new and relapse TB patients, 2017

	Number	(%)
Patients with known HIV-status who are HIV-positive	1 356	6%
- on antiretroviral therapy	949	70%

Drug-resistant TB care, 2017	New cases	Previously treated cases	Total number***
Estimated MDR/RR-TB cases among notified pulmonary TB cases			370 (290–460)
Estimated % of TB cases with MDR/RR-TB	1.5% (1.2–1.9)	3.1% (1.3–5.9)	
% notified tested for rifampicin resistance	47%	45%	15 432
MDR/RR-TB cases tested for resistance to second-line drugs			65
Laboratory-confirmed cases		MDR/RR-TB: 352, XDR-TB: 1	
Patients started on treatment ****		MDR/RR-TB: 97, XDR-TB: 0	

Treatment success rate and cohort size	Success	Cohort
New and relapse cases registered in 2016	80%	25 005
Previously treated cases, excluding relapse, registered in 2016	56%	736
HIV-positive TB cases registered in 2016	56%	1 406
MDR/RR-TB cases started on second-line treatment in 2015	41%	85
XDR-TB cases started on second-line treatment in 2015		0

TB preventive treatment, 2017

% of HIV-positive people (newly enrolled in care) on preventive treatment	79%
% of children (aged < 5) household contacts of bacteriologically-confirmed TB cases on preventive treatment	100% (87–100)

TB financing, 2018

National TB budget (US\$ millions)	16
Funding source: 100% domestic, international, 0% unfunded	

* Ranges represent uncertainty intervals

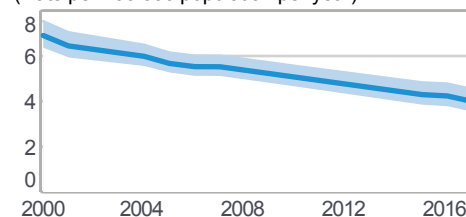
** MDR is TB resistant to rifampicin and isoniazid; RR is TB resistant to rifampicin

*** Includes cases with unknown previous TB treatment history

**** Includes patients diagnosed before 2017 and patients who were not laboratory-confirmed

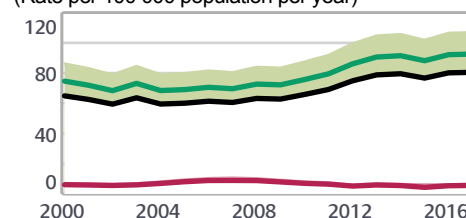
Tuberculosis profile

(Rate per 100 000 population per year)



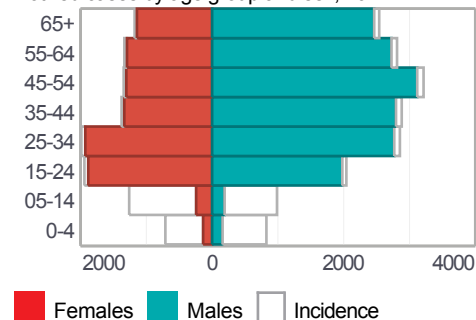
— Mortality (excludes HIV+TB)

(Rate per 100 000 population per year)

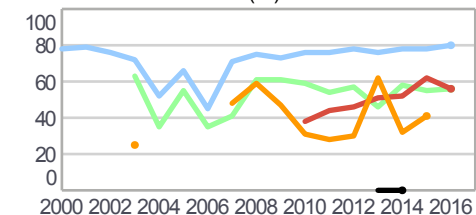


— Incidence
— Notified (new and relapse)
— Incidence (HIV+TB only)

Notified cases by age group and sex, 2017

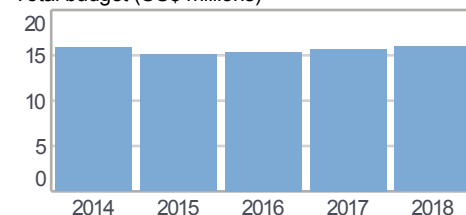


Treatment success rate (%)



— New and relapse
— Retreatment, excluding relapse
— HIV-positive — MDR/RR-TB — XDR-TB

Total budget (US\$ millions)



— Unfunded
— Funded internationally
— Funded domestically