

## MALAYSIA

## COUNTRY DATA

## EPIDEMIC ESTIMATES

	2010	2015	2022
<b>New HIV infections</b>			
New HIV infections (all ages)	5800 [5200–6300]	4800 [4300–5300]	3100 [2800–3500]
New HIV infections (0–14)	<100 [<100– <100]	<100 [<100– <100]	<100 [<100– <100]
New HIV infections (15–24)	1300 [1100–1400]	970 [860–1100]	570 [500–630]
New HIV infections (women, 15+)	890 [770–1000]	830 [720–900]	560 [<500–640]
New HIV infections (men, 15+)	4800 [4400–5200]	4000 [3600–4300]	2600 [2300–2800]
HIV incidence as new infections per 1000 uninfected population	0.20 [0.18–0.22]	0.16 [0.14–0.17]	0.09 [0.08–0.1]
<b>AIDS-related deaths</b>			
AIDS-related deaths (all ages)	3600 [3000–4200]	3500 [3000–4000]	2500 [2000–3200]
AIDS-related deaths (0–14)	<100 [<100– <100]	<100 [<100– <100]	<100 [<100– <100]
AIDS-related deaths (women, 15+)	<500 [<200– <500]	<500 [<500– <500]	<500 [<500–550]
AIDS-related deaths (men, 15+)	3300 [2700–3800]	3100 [2700–3600]	2100 [1700–2700]
<b>People living with HIV</b>			
People living with HIV (all ages)	74 000 [66 000–81 000]	81 000 [73 000–88 000]	86 000 [78 000–95 000]
People living with HIV (0–14)	550 [<500–720]	<500 [<500–640]	<500 [<200– <500]
People living with HIV (women, 15+)	12 000 [10 000–13 000]	15 000 [13 000–16 000]	17 000 [15 000–19 000]
People living with HIV (men, 15+)	61 000 [55 000–68 000]	66 000 [60 000–71 000]	69 000 [62 000–76 000]
HIV prevalence (15–49)	0.4 [0.3–0.4]	0.4 [0.3–0.4]	0.3 [0.3–0.4]

## LAWS AND POLICIES

Laws criminalizing HIV non-disclosure, exposure or transmission	Yes
Criminalization of sex work among consenting adults	Any criminalization or punitive regulation of sex work
Criminalization of same-sex sexual acts in private	Yes, penalty not specified
Criminalization of possession of small amounts of drugs	Yes
Criminalization of transgender people	Yes
Laws or policies restricting the entry, stay and residence of people living with HIV	Deport, prohibit short- and/or long-stay and require HIV testing or disclosure for some permits
Parental consent for adolescents to access HIV testing	Yes
Spousal consent for married women to access sexual and reproductive health services	No
Mandatory HIV testing for marriage, work or residence permits or for certain groups	Yes

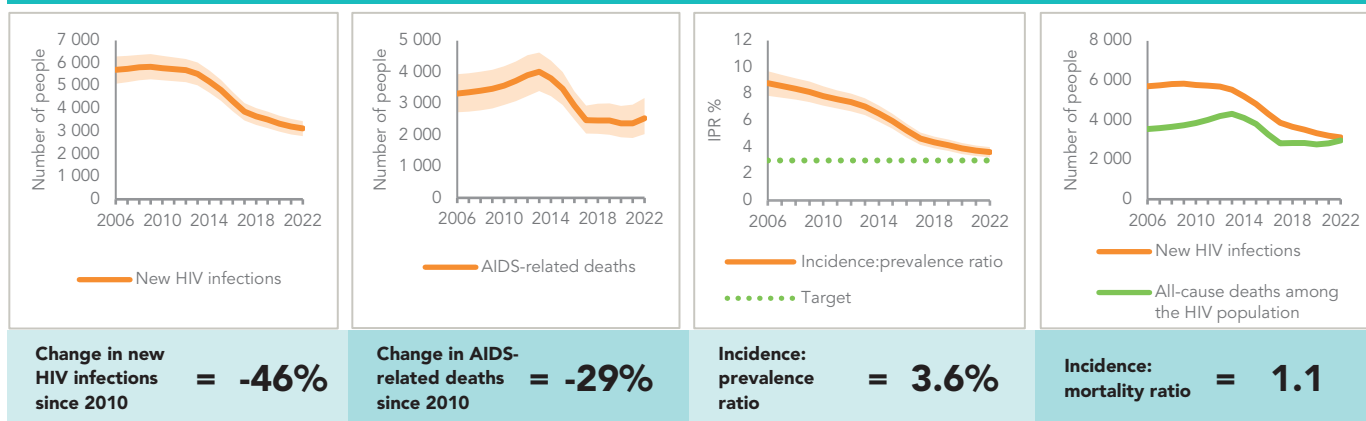
## STIGMA AND DISCRIMINATION

Percentage of women and men aged 15–49 years who report discriminatory attitudes towards people living with HIV	...
Percentage of people living with HIV who report experienced stigma and discrimination in the general community in the last 12 months	...
Percentage of people living with HIV who report experiences of HIV-related discrimination in health-care settings in the last 12 months	...
Proportion of ever-married or partnered women aged 15–49 years who experienced physical or sexual violence from a male intimate partner in the past 12 months	...
Percentage of women and men aged 15 to 49 years who agree that a husband is justified in hitting or beating his wife for specific reasons	...

## EXPENDITURES

	Financing sources					Total
	Domestic private	Domestic public	International: PEPFAR	International: Global Fund	International: all others	
Last available report: 2022	US\$ 1 118 688	US\$ 18 105 141	US\$ 0	US\$ 1 156 062	US\$ 173 194	US\$ 20 563 269

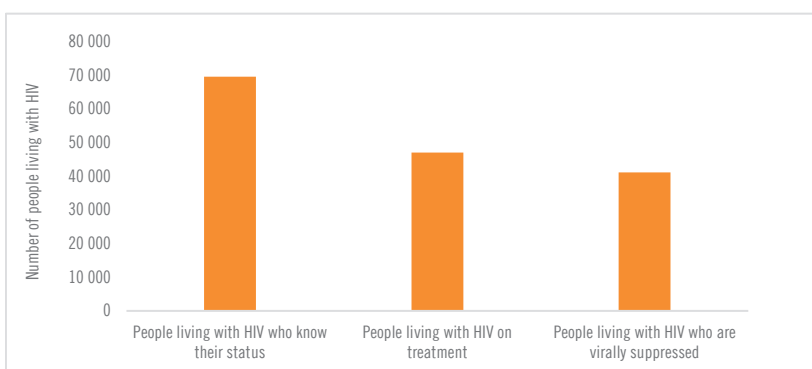
## EPIDEMIC TRANSITION METRICS



## KEY POPULATIONS

	Sex workers	Men who have sex with men	People who inject drugs	Transgender people	Prisoners
Estimated size of population	37 000	...	60 000	...	...
HIV prevalence	1.9%	12.9%	7.5%	5.9%	0.2%
HIV testing and status awareness	50.5%	81.1%	78.3%	81.5%	...
Antiretroviral therapy coverage	...	...	...	...	...
Condom use	93.8%	75%	10%	91.4%	...
Coverage of HIV prevention programmes	47%	60.1%	20.6%	65.8%	...
Avoidance of health care because of stigma and discrimination	6%	2.6%	9.1%	0.8%	...
Experience of sexual and/or physical violence	...	...	...	...	...

## HIV TESTING AND TREATMENT CASCADE



	81% [73–89%] 69 589	55% [49–60%] 47 067	48% [43–53%] 41 172
All ages			
Children (0–14)	93% [71–100%] 227	81% [62–100%] 198	65% [50–90%] 159
Women (15+)	62% [56–69%] 10 680	60% [53–65%] 10 208	...% [...–...%] ...
Men (15+)	85% [77–95%] 58 682	53% [48–59%] 36 661	46% [42–51%] 31 898

## ELIMINATION OF VERTICAL TRANSMISSION

	2015	2022
Percentage of pregnant women living with HIV accessing antiretroviral medicines	79% [65–94%]	99% [78–100%]
Final vertical transmission rate including during breastfeeding	7.2% [2.8–10.6%]	1.8% [0.6–2.7%]
Early infant diagnosis	64% [54–78%]	>98% [82–>98%]

## HIV COMORBIDITIES

Estimated number of incident tuberculosis cases among people living with HIV (2021)	1300 [1100–1500]
People living with HIV who started TB preventive therapy (2021)	18.6
Cervical cancer screening of women living with HIV	...
People coinfectd with HIV and hepatitis C virus starting hepatitis C treatment (19.2)	...

## HIV PREVENTION

Adults aged 15+ years with unsuppressed viral load	0.2%
Knowledge of HIV prevention among young people aged 15–24 years	...
— Women	...
— Men	...
Condom use at last sex with a non-marital, non-cohabiting partner among people aged 15–49 years	...
— Women	...
— Men	...
Women aged 15–49 years who have their method for family planning satisfied by modern methods	...
Men aged 15–49 years who are circumcised	Not applicable
Voluntary medical male circumcisions performed according to national standards	Not applicable
People who received PrEP at least once during the reporting period	...
Harm reduction	
— Use of sterile injecting equipment at last injection (2022)	80%
— Needles and syringes distributed per person who injects (2022)	17
— Coverage of opioid substitution therapy (2022)	90.9%
— Naloxone available (2023)	Yes