

LAO PEOPLE'S DEMOCRATIC REPUBLIC

COUNTRY DATA

EPIDEMIC ESTIMATES

	2010	2015	2022
New HIV infections			
New HIV infections (all ages)	1100 [970–1200]	1100 [980–1200]	1000 [910–1100]
New HIV infections (0–14)	<100 [<100– <200]	<100 [<100– <200]	<100 [<100– <100]
New HIV infections (15–24)	<500 [<500–560]	<500 [<500–560]	<500 [<500–500]
New HIV infections (women, 15+)	<500 [<500– <500]	<500 [<500– <500]	<500 [<500– <500]
New HIV infections (men, 15+)	590 [520–650]	620 [550–680]	660 [590–730]
HIV incidence as new infections per 1000 uninfected population	0.17 [0.15–0.19]	0.16 [0.14–0.18]	0.14 [0.12–0.15]
AIDS-related deaths			
AIDS-related deaths (all ages)	<500 [<200– <500]	<500 [<500– <500]	<500 [<500– <500]
AIDS-related deaths (0–14)	<100 [<100– <100]	<100 [<100– <100]	<100 [<100– <100]
AIDS-related deaths (women, 15+)	<100 [<100– <100]	<100 [<100– <200]	<200 [<200– <200]
AIDS-related deaths (men, 15+)	<200 [<200– <200]	<500 [<200– <500]	<200 [<200– <500]
People living with HIV			
People living with HIV (all ages)	9600 [8700–11 000]	13 000 [12 000–14 000]	17 000 [16 000–19 000]
People living with HIV (0–14)	<500 [<500– <500]	540 [<500–610]	600 [520–690]
People living with HIV (women, 15+)	3700 [3300–4100]	5100 [4600–5600]	6500 [5800–7300]
People living with HIV (men, 15+)	5500 [4900–6100]	7400 [6700–8300]	10 000 [9000–12 000]
HIV prevalence (15–49)	0.3 [0.2–0.3]	0.3 [0.3–0.4]	0.4 [0.3–0.4]

LAWS AND POLICIES

Laws criminalizing HIV non-disclosure, exposure or transmission	Yes
Criminalization of sex work among consenting adults	Any criminalization or punitive regulation of sex work
Criminalization of same-sex sexual acts in private	No, laws penalizing consensual same-sex sexual acts have been decriminalized or have never existed anywhere in the country
Criminalization of possession of small amounts of drugs	Yes
Criminalization of transgender people	No
Laws or policies restricting the entry, stay and residence of people living with HIV	No restrictions
Parental consent for adolescents to access HIV testing	Yes
Spousal consent for married women to access sexual and reproductive health services	No
Mandatory HIV testing for marriage, work or residence permits or for certain groups	No

STIGMA AND DISCRIMINATION

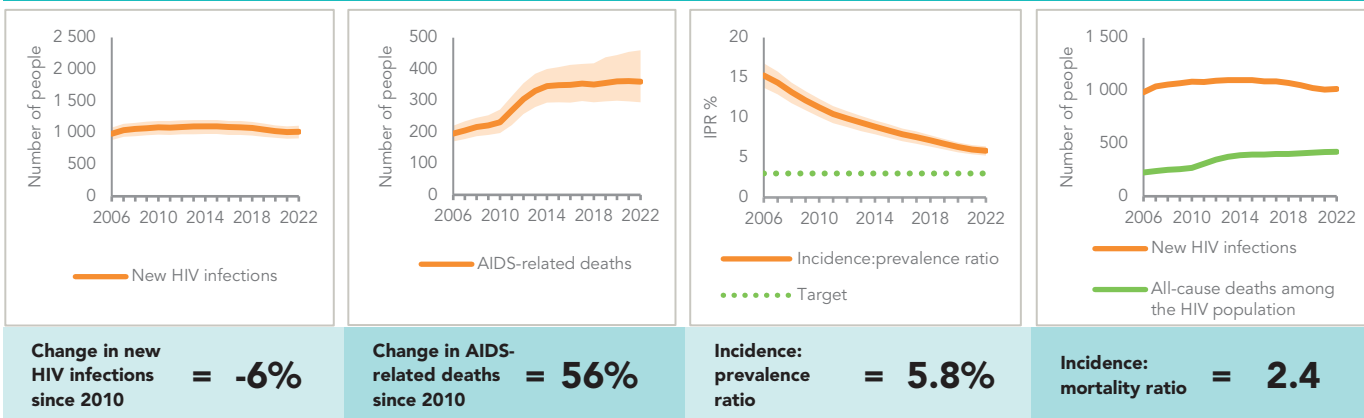
Percentage of women aged 15–49 years who report discriminatory attitudes towards people living with HIV	...	2017
Percentage of people living with HIV who report experienced stigma and discrimination in the general community in the last 12 months	...	48.08408
Percentage of people living with HIV who report experiences of HIV-related discrimination in health-care settings in the last 12 months	...	
Proportion of ever-married or partnered women aged 15–49 years who experienced physical or sexual violence from a male intimate partner in the past 12 months	...	
Percentage of women and men aged 15 to 49 years who agree that a husband is justified in hitting or beating his wife for specific reasons (Refers to women only)	...	2017 16.20

GENDER INEQUALITY AND VIOLENCE

EXPENDITURES

	Financing sources					Total
	Domestic private	Domestic public	International: PEPFAR	International: Global Fund	International: all others	
Last available report: 2022	US\$ 4619	US\$ 1 840 528	US\$ 798 510	US\$ 950 238	US\$ 368 619	US\$ 4 062 514

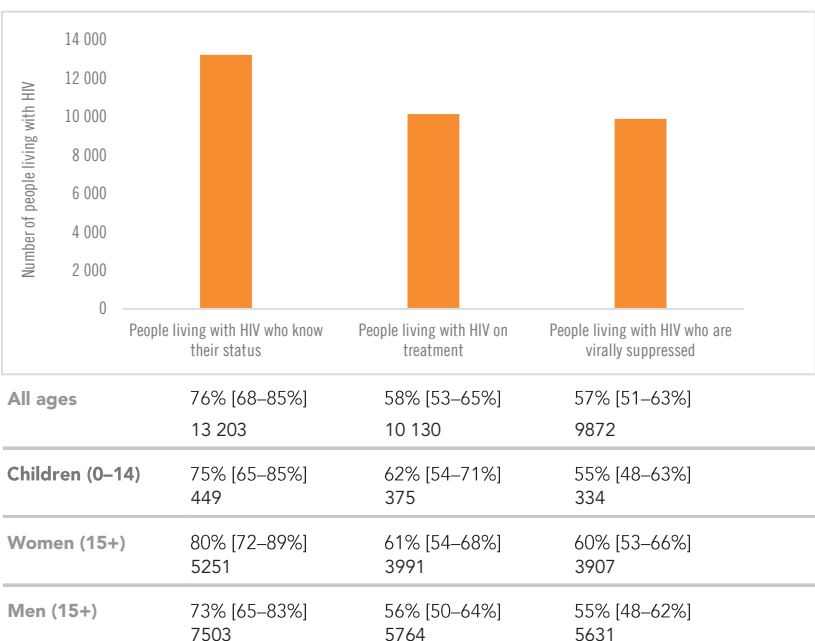
EPIDEMIC TRANSITION METRICS



KEY POPULATIONS

	Sex workers	Men who have sex with men	People who inject drugs	Transgender people	Prisoners
Estimated size of population
HIV prevalence	0.8%	4.1%
HIV testing and status awareness	39.2%	11.5%
Antiretroviral therapy coverage
Condom use	90.6%	35.1%
Coverage of HIV prevention programmes	36.8%
Avoidance of health care because of stigma and discrimination	1.9%	1.7%
Experience of sexual and/or physical violence

HIV TESTING AND TREATMENT CASCADE



ELIMINATION OF VERTICAL TRANSMISSION

	2015	2022
Percentage of pregnant women living with HIV accessing antiretroviral medicines	16% [13–18%]	54% [47–61%]
Final vertical transmission rate including during breastfeeding	40.7% [38–43.2%]	30.2% [26.7–33.1%]
Early infant diagnosis	5% [4–6%]	30% [27–35%]

HIV COMORBIDITIES

Estimated number of incident tuberculosis cases among people living with HIV (2021)	610 [380–900]
People living with HIV who started TB preventive therapy (2021)	37.6
Cervical cancer screening of women living with HIV	...
People coinfectd with HIV and hepatitis C virus starting hepatitis C treatment	...

HIV PREVENTION

Adults aged 15+ years with unsuppressed viral load	0.1%
Knowledge of HIV prevention among young people aged 15–24 years	...
— Women	...
— Men	...
Condom use at last sex with a non-marital, non-cohabiting partner among people aged 15–49 years	...
— Women	...
— Men	...
Women aged 15–49 years who have their demand for family planning satisfied by modern methods	...
Men aged 15–49 years who are circumcised	Not applicable
Voluntary medical male circumcisions performed according to national standards	Not applicable
People who received PrEP at least once during the reporting period (2022)	455
Harm reduction	...
— Use of sterile injecting equipment at last injection	...
— Needles and syringes distributed per person who injects	...
— Coverage of opioid substitution therapy	...
— Naloxone available (2023)	No