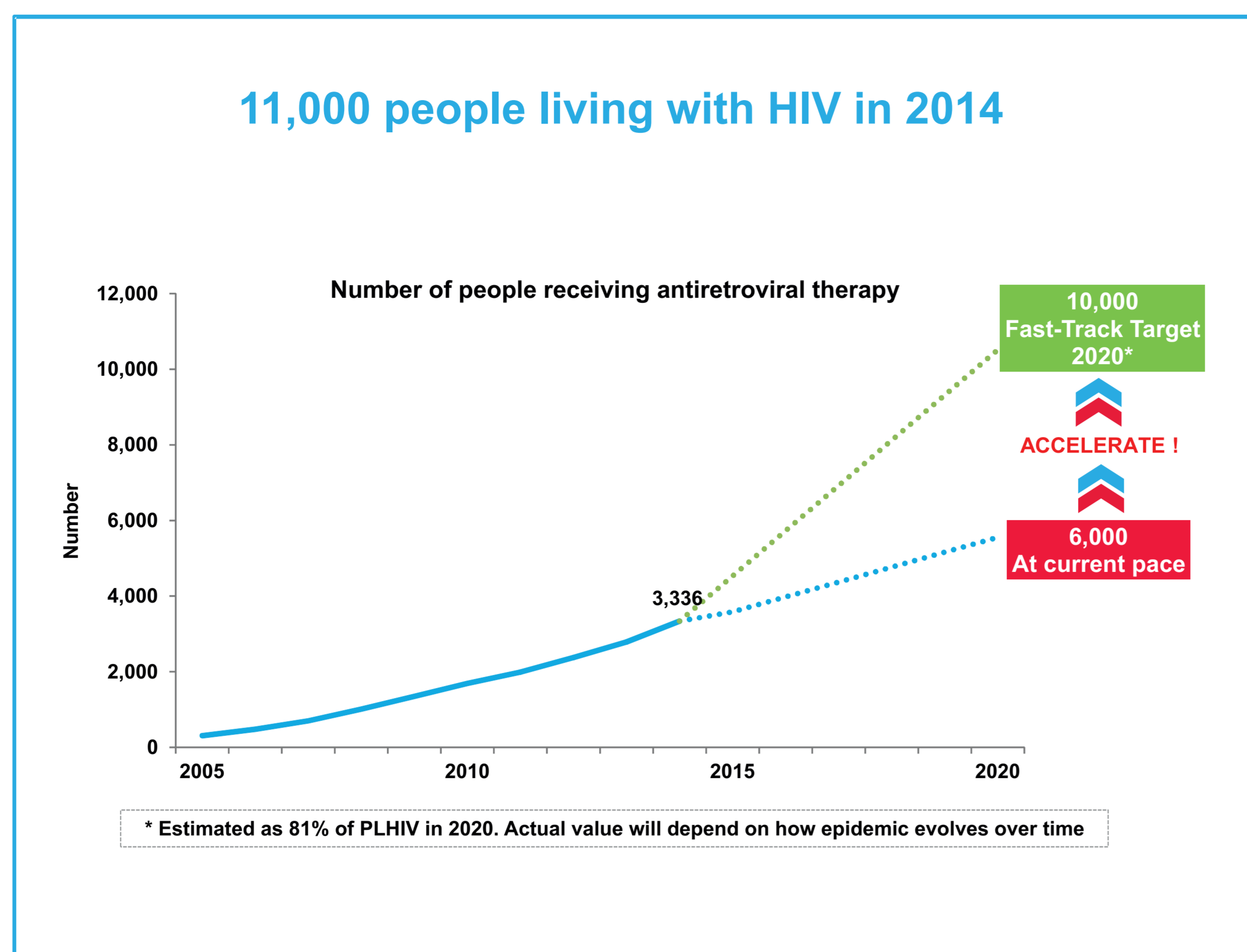




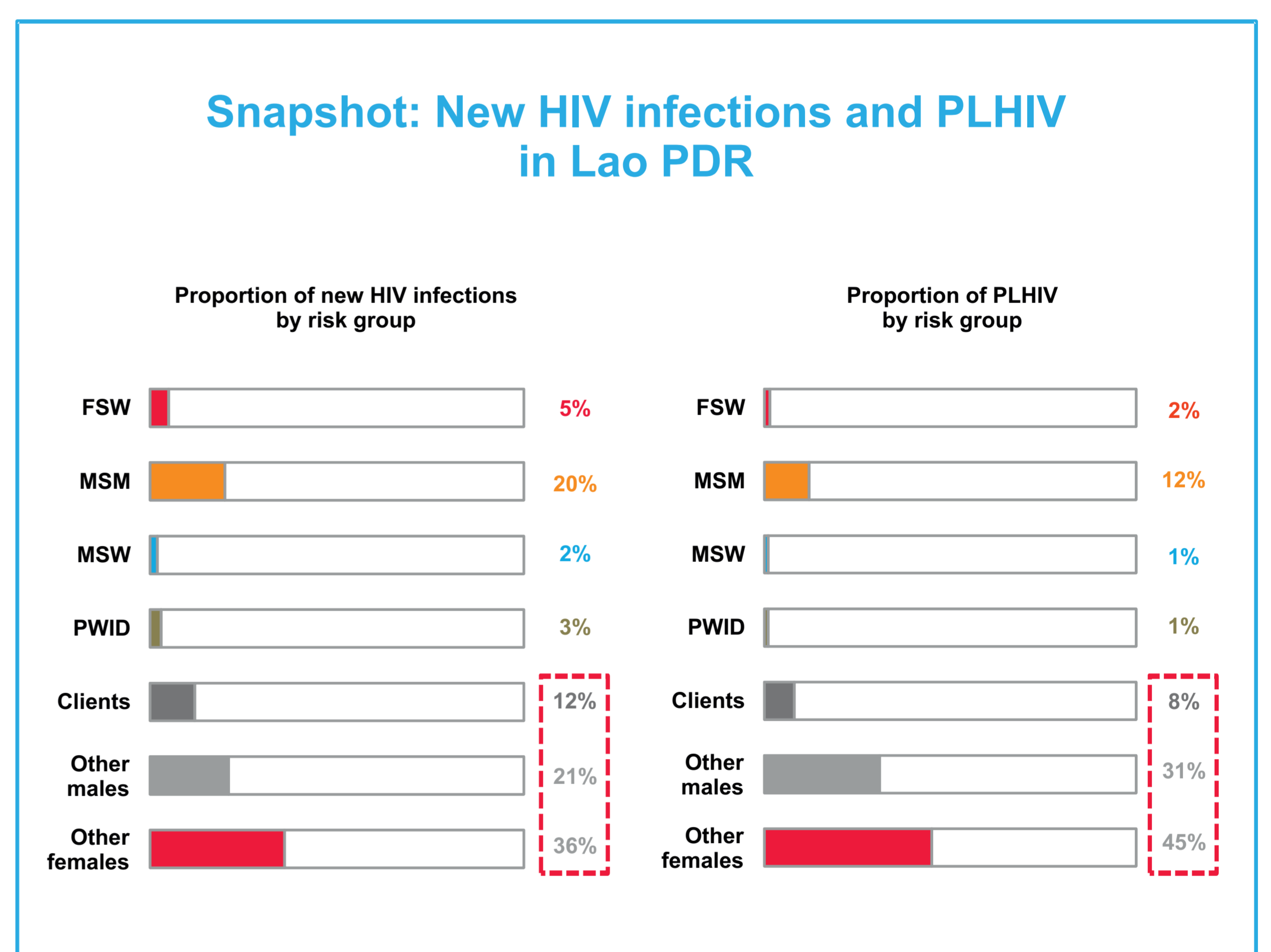
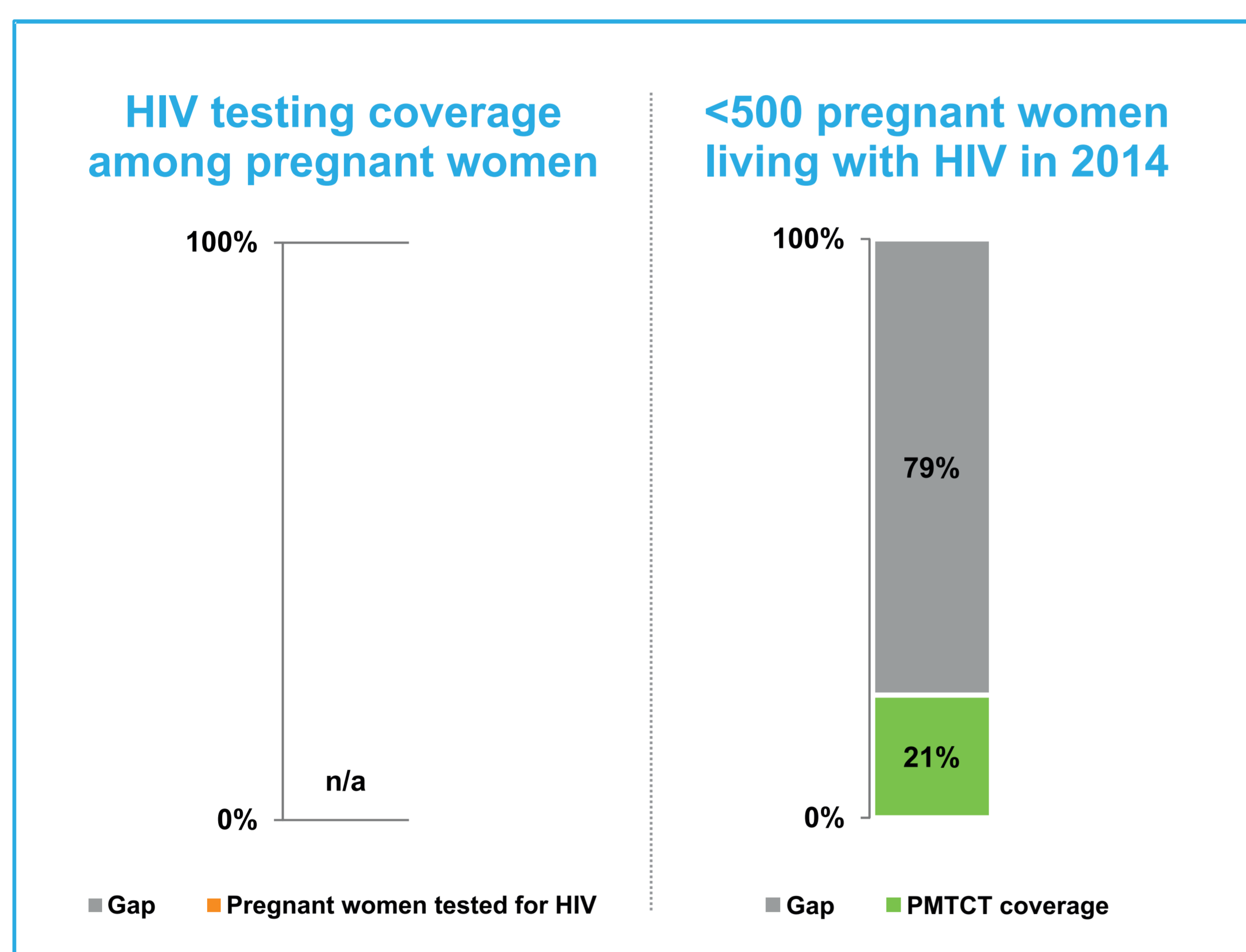
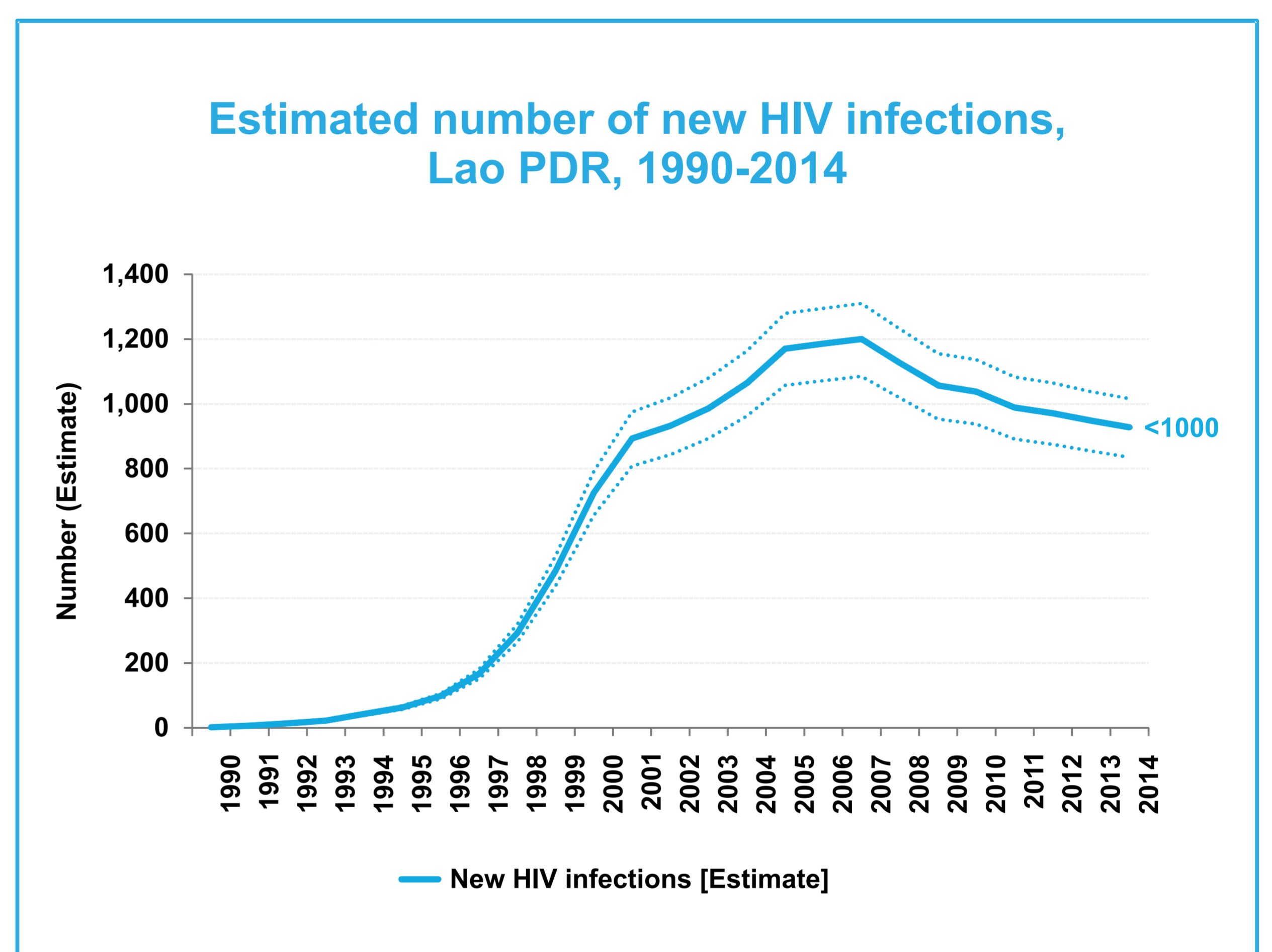
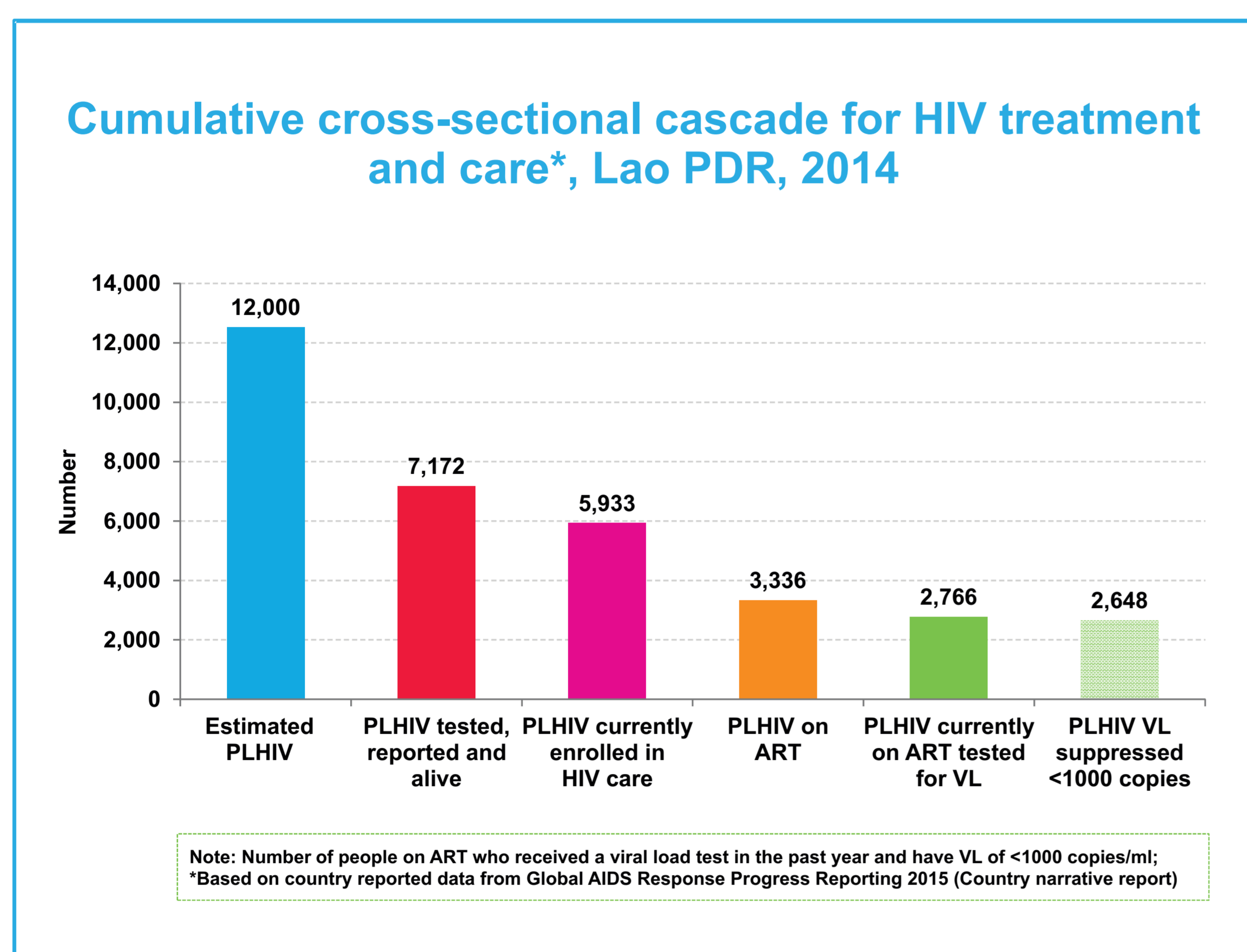
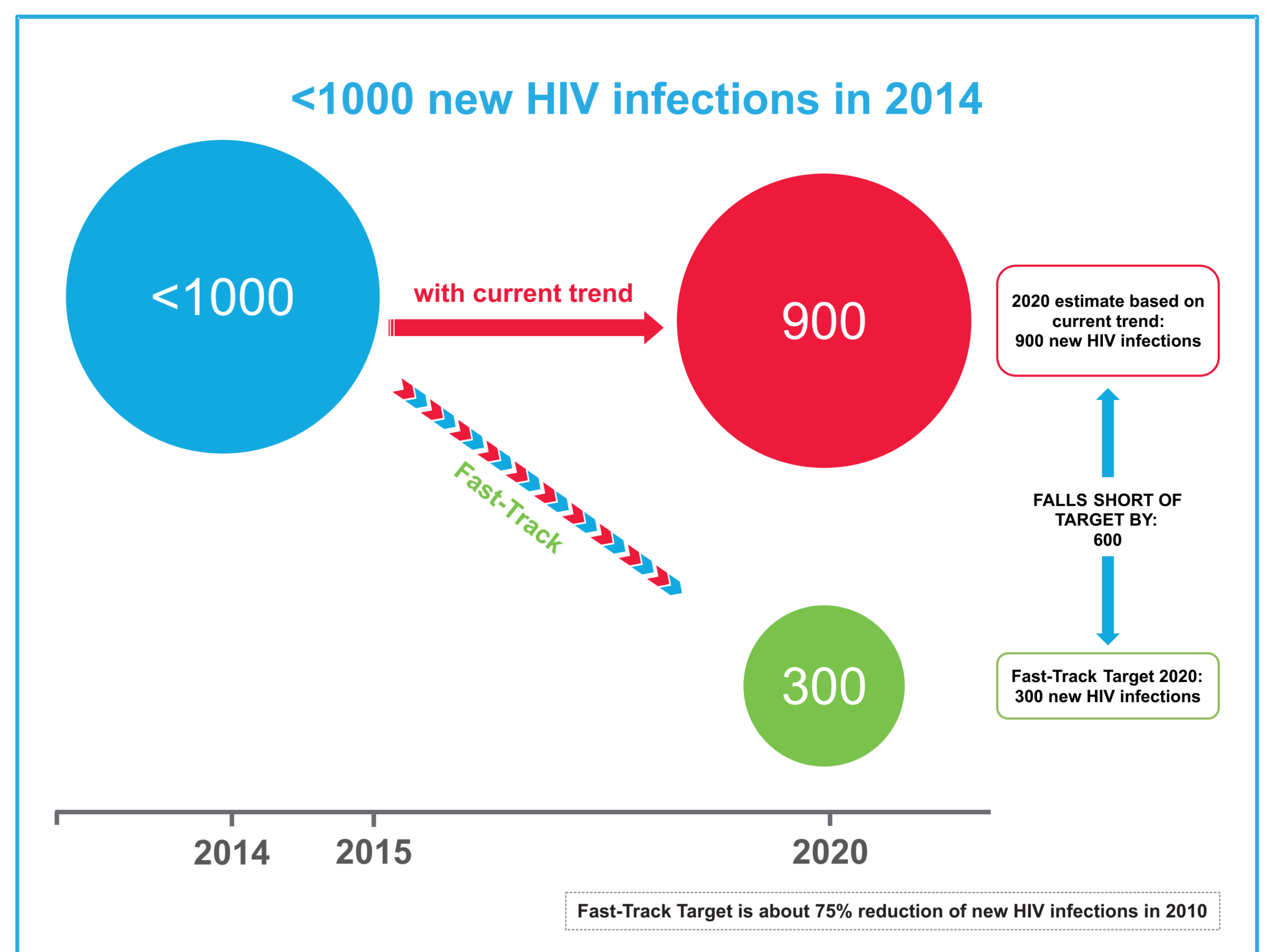
Country Poster

2015

Treatment

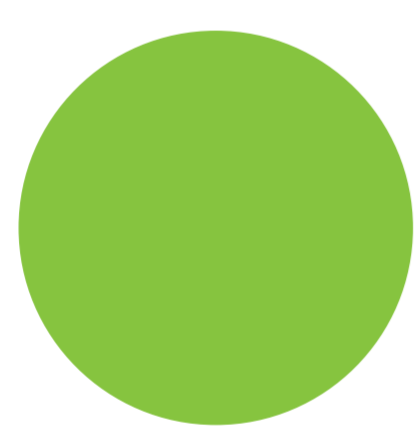


New HIV infections

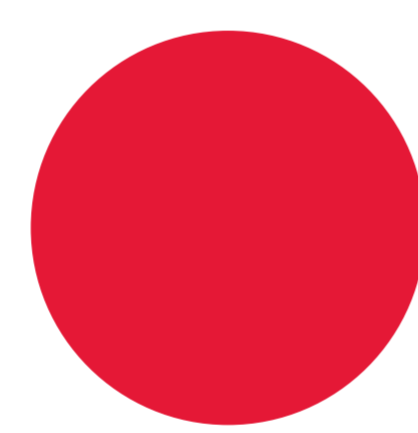


Zero discrimination

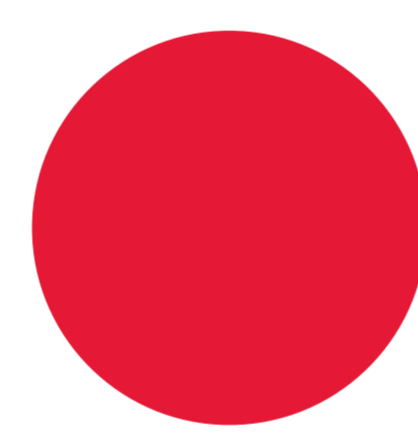
Criminalization of same-sex sexual activities



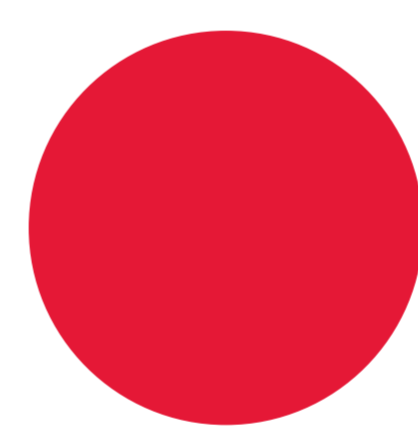
Maintains compulsory detention centre for PWUD



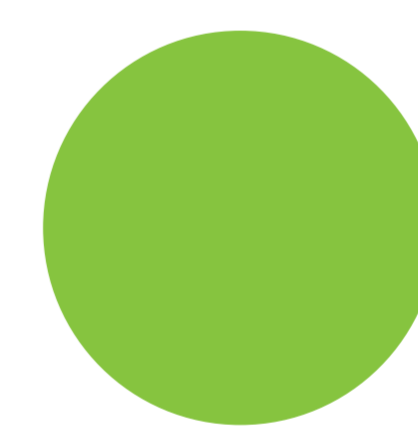
Criminalization of sex work



Criminalization of HIV transmission or exposure



Maintains HIV-related restrictions on entry, stay and residence



● Has punitive law
● Does not have punitive law
● No information available

Civil society perspective (NCPI 2014)

Access to justice



Legal services (legal aid or other)



NHRI or other mechanisms

Civil society perspectives/ratings:

Laws and policies in place to protect and promote HIV-related human rights

2013

Trend (2009-2013)

Efforts to implement human rights-related laws and policies

7/10

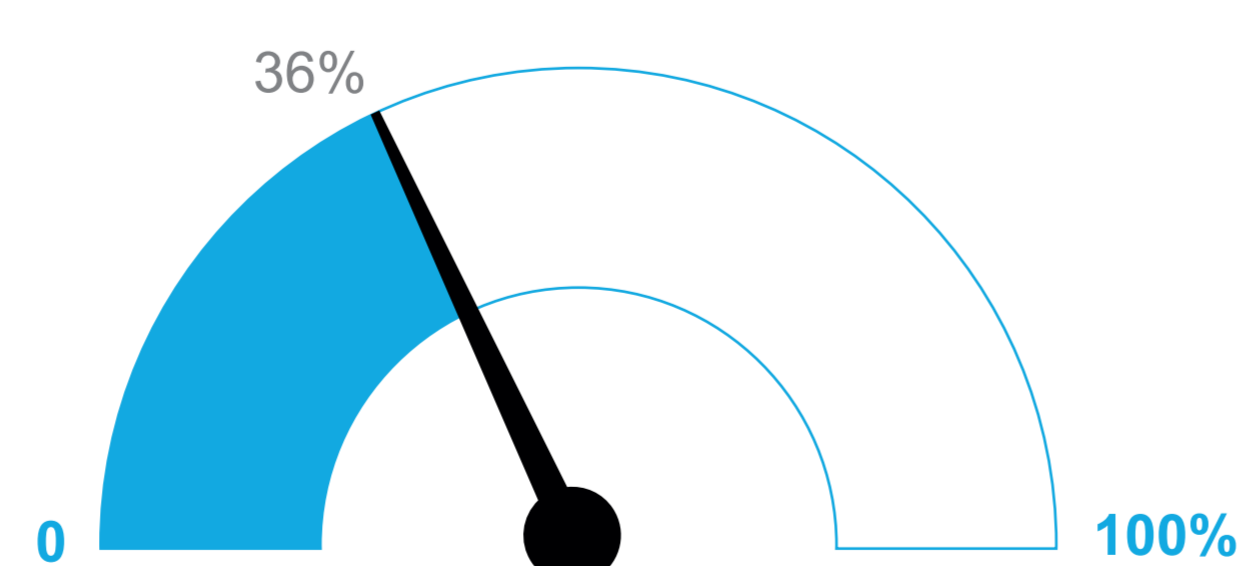


6/10



Stigma Index (2012)

Percent of PLHIV respondents who avoided going to a local clinic when needed because of HIV status



Law and policies that enable independent consent for young people to access HIV testing and related services



Yes, Age-14

Intimate Partner Violence

Percent of ever-married or partnered women aged 15-49 who experienced physical or sexual violence from a male intimate partner in the past 12 months

Data not available

City focus

Data not available