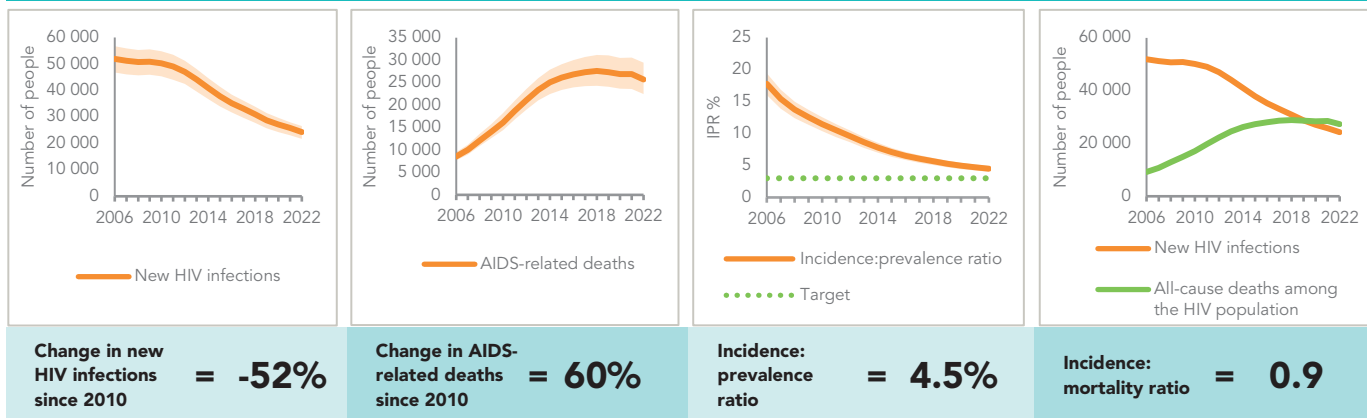




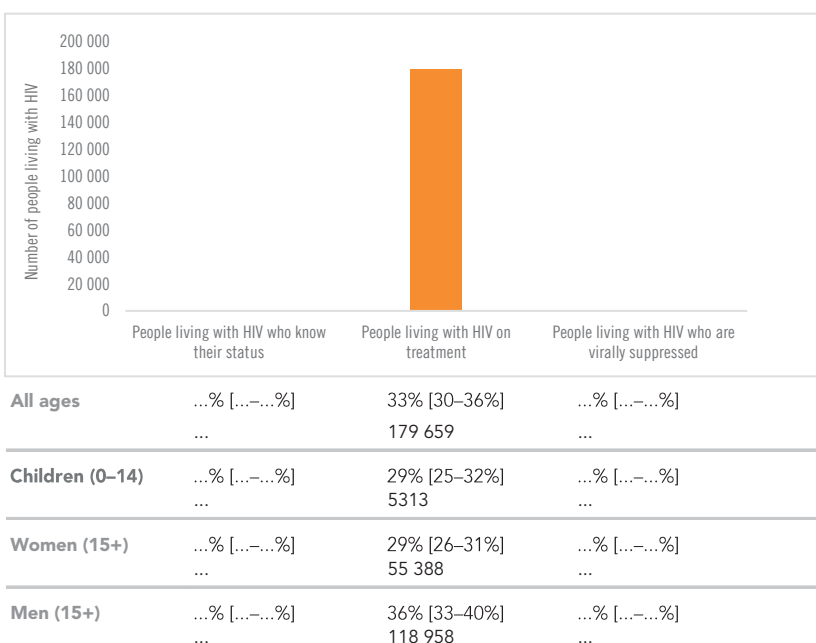
## EPIDEMIC TRANSITION METRICS



## KEY POPULATIONS

	Sex workers	Men who have sex with men	People who inject drugs	Transgender people	Prisoners
Estimated size of population	277 600	761 000	27 100	34 700	...
HIV prevalence	2.1%	17.9%	13.7%	11.9%	0.9%
HIV testing and status awareness	38.6%	55.5%	57.2%	65.0%	...
Antiretroviral therapy coverage	22.4%	37.9%	...	34.4%	...
Condom use	66.8%	69.6%	34.1%	68.9%	...
Coverage of HIV prevention programmes	...	...	...	...	...
Avoidance of health care because of stigma and discrimination	...	...	...	...	...
Experience of sexual and/or physical violence	...	...	...	...	...

## HIV TESTING AND TREATMENT CASCADE



## ELIMINATION OF VERTICAL TRANSMISSION

	2015	2022
Percentage of pregnant women living with HIV accessing antiretroviral medicines	8% [7-10%]	18% [15-20%]
Final vertical transmission rate including during breastfeeding	31.9% [30.6-33.2%]	29.8% [28.1-31.3%]
Early infant diagnosis	6% [5-7%]	8% [7-10%]

## HIV COMORBIDITIES

Estimated number of incident tuberculosis cases among people living with HIV (2021)	22 000 [9600-40 000]
People living with HIV who started TB preventive therapy (2021)	4.6
Cervical cancer screening of women living with HIV	...
People coinfectd with HIV and hepatitis C virus starting hepatitis C treatment	...

## HIV PREVENTION

Adults aged 15+ years with unsuppressed viral load	...
Knowledge of HIV prevention among young people aged 15-24 years	...
— Women	...
— Men	...
Condom use at last sex with a non-marital, non-cohabiting partner among people aged 15-49 years	...
— Women	...
— Men	...
Women aged 15-49 years who have their demand for family planning satisfied by modern methods (2017)	...
Men aged 15-49 years who are circumcised	Not applicable
Voluntary medical male circumcisions performed according to national standards	Not applicable
People who received PrEP at least once during the reporting period (2022)	3178
Harm reduction	
— Use of sterile injecting equipment at last injection (2019)	89.8%
— Needles and syringes distributed per person who injects (2022)	1
— Coverage of opioid substitution therapy (2022)	1.3%
— Naloxone available (2023)	Yes