

Annex

2

Country profiles



FOR
30 HIGH-BURDEN
COUNTRIES



**20 high TB burden countries based on
absolute number of incident cases**

**10 high TB burden countries based on
severity of disease burden
(incidence per capita)**

Angola

Estimates of TB burden,^a 2015

	Number (thousands)	Rate (per 100 000 population)
Mortality (excludes HIV+TB)	11 (6.6-17)	45 (27-67)
Mortality (HIV+TB only)	7.2 (1.6-17)	29 (6.5-67)
Incidence (includes HIV+TB)	93 (60-132)	370 (240-529)
Incidence (HIV+TB only)	28 (17-41)	111 (68-165)
Incidence (MDR/RR-TB) ^b	4.1 (0.36-7.8)	16 (1.4-31)

Estimated TB incidence by age and sex (thousands),^a 2015

	0-14 years	> 14 years	Total
Females	5.7 (3.1-8.4)	34 (16-51)	40 (19-60)
Males	4.4 (2.6-6.2)	49 (34-64)	53 (36-70)
Total	10 (6.6-14)	83 (63-102)	93 (60-132)

TB case notifications, 2015

Total cases notified	61 060
Total new and relapse	59 705
— % tested with rapid diagnostics at time of diagnosis	
— % with known HIV status	23%
— % pulmonary	93%
— % bacteriologically confirmed among pulmonary	51%

Universal health coverage and social protection

TB treatment coverage (notified/estimated incidence), 2015	64% (45-100)
TB patients facing catastrophic total costs	
TB case fatality ratio (estimated mortality/estimated incidence), 2015	0.21 (0.1-0.37)

TB/HIV care in new and relapse TB patients, 2015

	Number	(%)
Patients with known HIV-status who are HIV-positive	1 558	12%
— on antiretroviral therapy		

Drug-resistant TB care, 2015

	New cases	Previously treated cases	Total number ^c
Estimated MDR/RR-TB cases among notified pulmonary TB cases			2 700 (430-5 000)
Estimated % of TB cases with MDR/RR-TB	2.8% (0.1-6.7)	21% (2.2-39)	
% notified tested for rifampicin resistance			227
MDR/RR-TB cases tested for resistance to second-line drugs			0
Laboratory-confirmed cases		MDR/RR-TB: 227, XDR-TB: 0	
Patients started on treatment ^d		MDR/RR-TB: 227, XDR-TB: 0	

Treatment success rate and cohort size

	Success	Cohort
New and relapse cases registered in 2014	34%	53 552
Previously treated cases, excluding relapse, registered in 2014	66%	1 654
HIV-positive TB cases, all types, registered in 2014		
MDR/RR-TB cases started on second-line treatment in 2013	74%	116
XDR-TB cases started on second-line treatment in 2013		

TB preventive treatment, 2015

% of HIV-positive people (newly enrolled in care) on preventive treatment	
% of children (aged < 5) household contacts of bacteriologically-confirmed TB cases on preventive treatment	

TB financing, 2016

National TB budget (US\$ millions)	22
Funding source	39% domestic, 0% international, 61% unfunded

Data are as reported to WHO. Estimates of TB and MDR/RR-TB burden are produced by WHO in consultation with countries. Estimates are rounded and totals are computed prior to rounding.

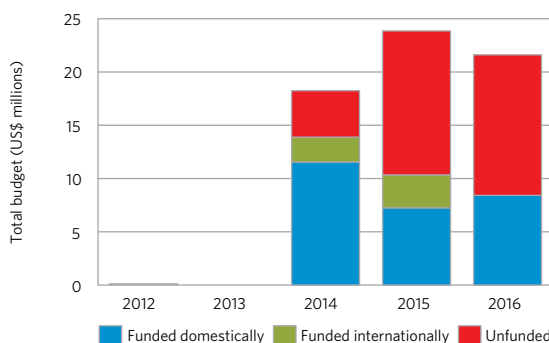
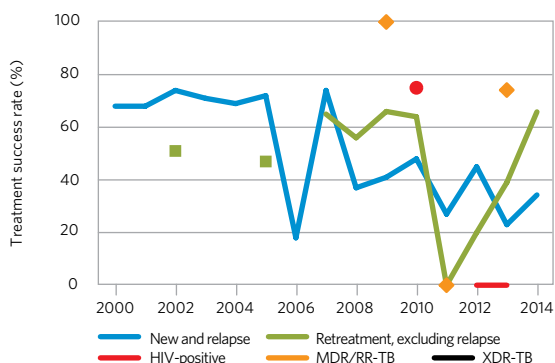
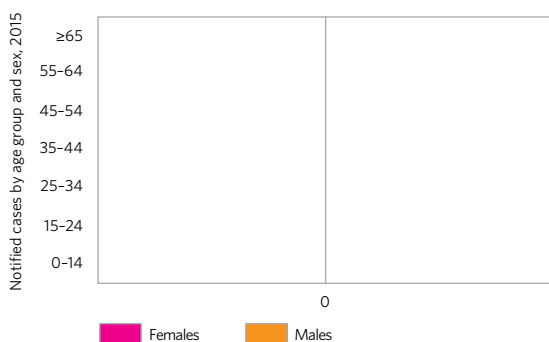
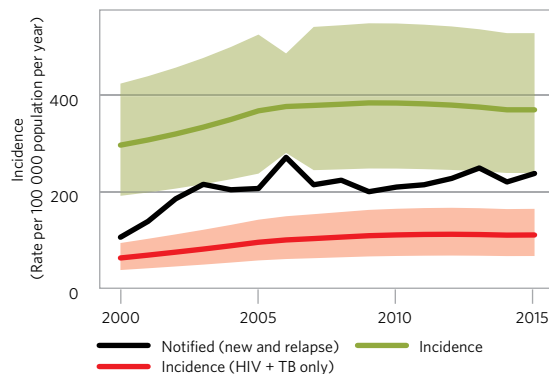
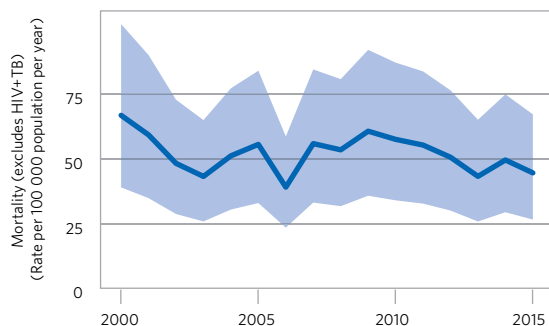
^a Ranges represent uncertainty intervals.

^b MDR is TB resistant to rifampicin and isoniazid; RR is TB resistant to rifampicin.

^c Includes cases with unknown previous TB treatment history.

^d Includes patients diagnosed before 2015 and patients who were not laboratory-confirmed.

population 2015 :: 25 million



Bangladesh

population 2015 :: **161 million**

Estimates of TB burden,^a 2015

	Number (thousands)	Rate (per 100 000 population)
Mortality (excludes HIV+TB)	73 (43-110)	45 (27-68)
Mortality (HIV+TB only)	0.23 (0.19-0.29)	0.14 (0.12-0.18)
Incidence (includes HIV+TB)	362 (234-517)	225 (146-321)
Incidence (HIV+TB only)	0.63 (0.39-0.94)	0.39 (0.24-0.59)
Incidence (MDR/RR-TB) ^b	9.7 (5.4-14)	6 (3.4-8.7)

Estimated TB incidence by age and sex (thousands),^a 2015

	0-14 years	> 14 years	Total
Females	20 (9.9-31)	131 (62-200)	151 (72-231)
Males	17 (9.8-24)	194 (134-254)	211 (143-278)
Total	37 (23-51)	325 (247-403)	362 (234-517)

TB case notifications, 2015

Total cases notified	209 438
Total new and relapse	206 915
— % tested with rapid diagnostics at time of diagnosis	
— % with known HIV status	<1%
— % pulmonary	79%
— % bacteriologically confirmed among pulmonary	72%

Universal health coverage and social protection

TB treatment coverage (notified/estimated incidence), 2015	57% (40-88)
TB patients facing catastrophic total costs	
TB case fatality ratio (estimated mortality/estimated incidence), 2015	0.21 (0.11-0.37)

TB/HIV care in new and relapse TB patients, 2015

	Number	(%)
Patients with known HIV-status who are HIV-positive ^c	92	16%
— on antiretroviral therapy	82	89%

Drug-resistant TB care, 2015

	New cases	Previously treated cases	Total number ^d
Estimated MDR/RR-TB cases among notified pulmonary TB cases			5 100 (3 500-6 800)
Estimated % of TB cases with MDR/RR-TB	1.6% (0.59-2.6)	29% (24-34)	
% notified tested for rifampicin resistance	5%	63%	36 836
MDR/RR-TB cases tested for resistance to second-line drugs			250
Laboratory-confirmed cases		MDR/RR-TB: 954, XDR-TB: 0	
Patients started on treatment ^e		MDR/RR-TB: 880, XDR-TB: 0	

Treatment success rate and cohort size

	Success	Cohort
New and relapse cases registered in 2014	93%	191 141
Previously treated cases, excluding relapse, registered in 2014	88%	5 497
HIV-positive TB cases, all types, registered in 2014	62%	45
MDR/RR-TB cases started on second-line treatment in 2013	75%	686
XDR-TB cases started on second-line treatment in 2013	0%	3

TB preventive treatment, 2015

% of HIV-positive people (newly enrolled in care) on preventive treatment	
% of children (aged < 5) household contacts of bacteriologically-confirmed TB cases on preventive treatment	22% (20-24)

TB financing, 2016

National TB budget (US\$ millions)	52
Funding source	12% domestic, 87% international, 1% unfunded

Data are as reported to WHO. Estimates of TB and MDR/RR-TB burden are produced by WHO in consultation with countries. Estimates are rounded and totals are computed prior to rounding.

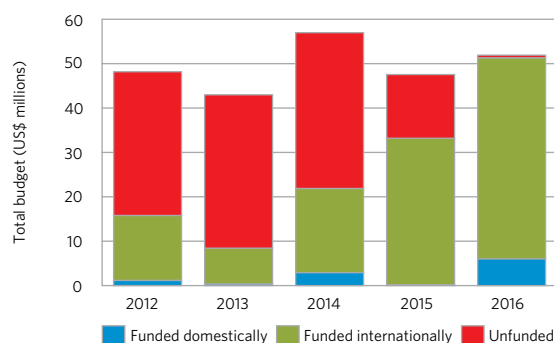
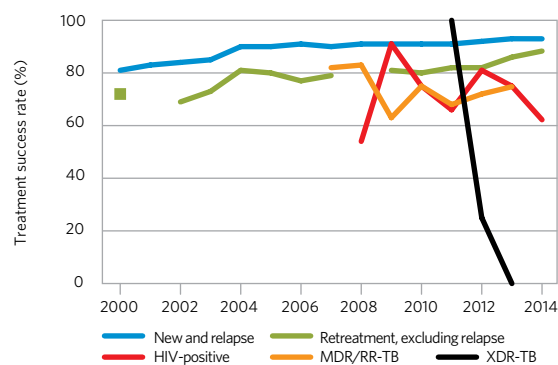
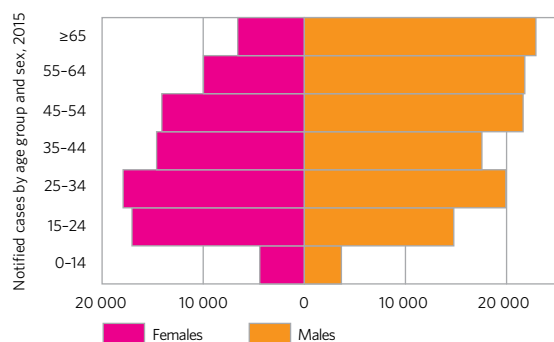
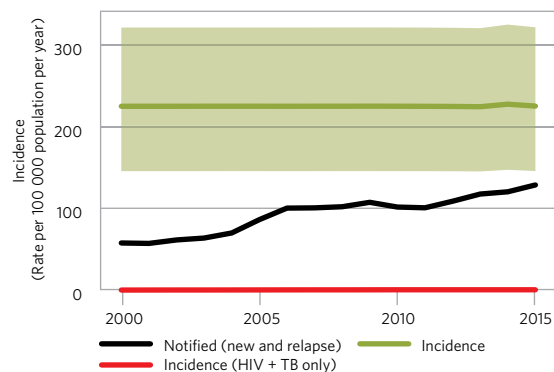
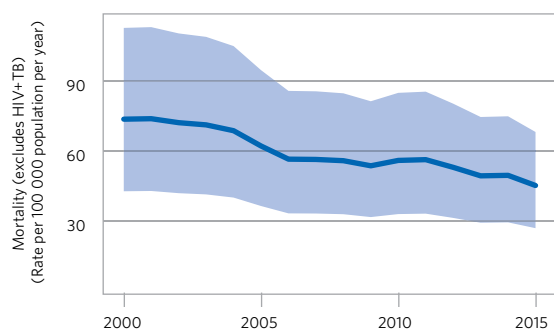
^a Ranges represent uncertainty intervals. Estimates of TB incidence and mortality will be reviewed once final results from the 2015/2016 national TB prevalence survey are available.

^b MDR is TB resistant to rifampicin and isoniazid; RR is TB resistant to rifampicin.

^c 17 HIV-positive cases were identified from 506 diagnosed TB patients considered at high risk for HIV co-infection and 75 were known to be HIV-positive before being diagnosed with TB.

^d Includes cases with unknown previous TB treatment history.

^e Includes patients diagnosed before 2015 and patients who were not laboratory-confirmed.



Brazil

population 2015 :: 208 million

Estimates of TB burden,^a 2015

	Number (thousands)	Rate (per 100 000 population)
Mortality (excludes HIV+TB)	5.5 (5.2-5.9)	2.7 (2.5-2.8)
Mortality (HIV+TB only)	2.2 (1.2-3.6)	1.1 (0.56-1.7)
Incidence (includes HIV+TB)	84 (72-97)	41 (35-47)
Incidence (HIV+TB only)	13 (11-15)	6.3 (5.3-7.3)
Incidence (MDR/RR-TB) ^b	2.3 (1.9-2.8)	1.1 (0.91-1.3)

Estimated TB incidence by age and sex (thousands),^a 2015

	0-14 years	> 14 years	Total
Females	3.8 (2.2-5.4)	24 (14-33)	28 (17-38)
Males	4.3 (3-5.6)	52 (41-64)	57 (44-69)
Total	8.1 (6.2-10)	76 (69-83)	84 (72-97)

TB case notifications, 2015

Total cases notified	81 137
Total new and relapse	73 221
— % tested with rapid diagnostics at time of diagnosis	23%
— % with known HIV status	82%
— % pulmonary	87%
— % bacteriologically confirmed among pulmonary	73%

Universal health coverage and social protection

TB treatment coverage (notified/estimated incidence), 2015	87% (75-100)
TB patients facing catastrophic total costs	
TB case fatality ratio (estimated mortality/estimated incidence), 2015	0.09 (0.07-0.11)

TB/HIV care in new and relapse TB patients, 2015

	Number	(%)
Patients with known HIV-status who are HIV-positive	9 069	15%
— on antiretroviral therapy	2 852	31%

Drug-resistant TB care, 2015

	New cases	Previously treated cases	Total number ^c
Estimated MDR/RR-TB cases among notified pulmonary TB cases			1 900 (1 600-2 300)
Estimated % of TB cases with MDR/RR-TB	1.5% (1.1-1.9)	8% (5.9-10)	
% notified tested for rifampicin resistance	26%	35%	22 608
MDR/RR-TB cases tested for resistance to second-line drugs			237
Laboratory-confirmed cases		MDR/RR-TB: 1 197, XDR-TB: 14	
Patients started on treatment ^d		MDR/RR-TB: 619, XDR-TB: 29	

Treatment success rate and cohort size

	Success	Cohort
New and relapse cases registered in 2014	71%	74 117
Previously treated cases, excluding relapse, registered in 2014	39%	7 532
HIV-positive TB cases, all types, registered in 2014	49%	6 891
MDR/RR-TB cases started on second-line treatment in 2013	52%	759
XDR-TB cases started on second-line treatment in 2013	12%	17

TB preventive treatment, 2015

% of HIV-positive people (newly enrolled in care) on preventive treatment	
% of children (aged < 5) household contacts of bacteriologically-confirmed TB cases on preventive treatment	

TB financing, 2016

National TB budget (US\$ millions)	60
Funding source	77% domestic, <1% international, 22% unfunded

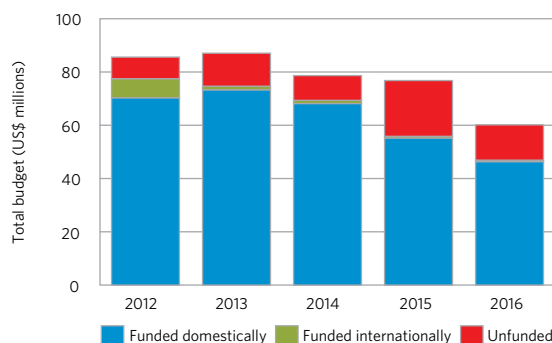
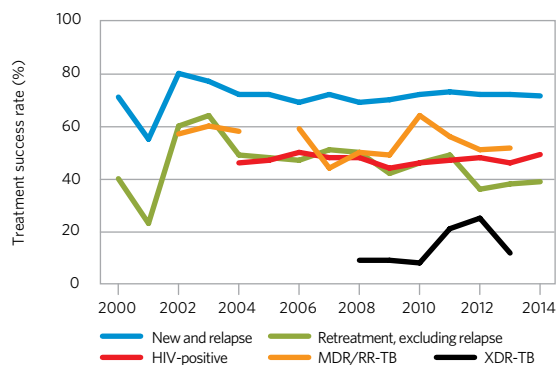
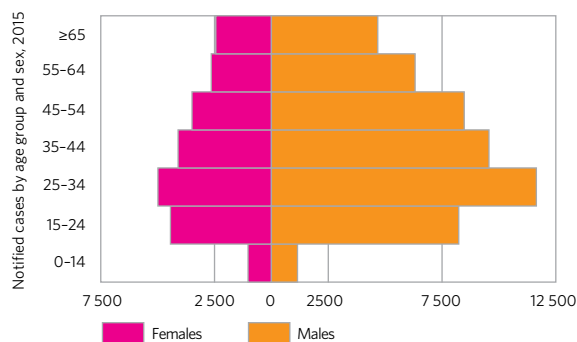
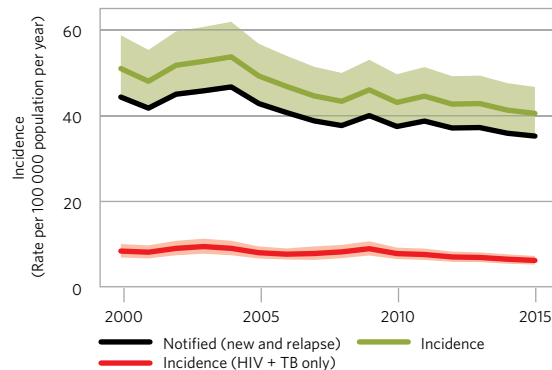
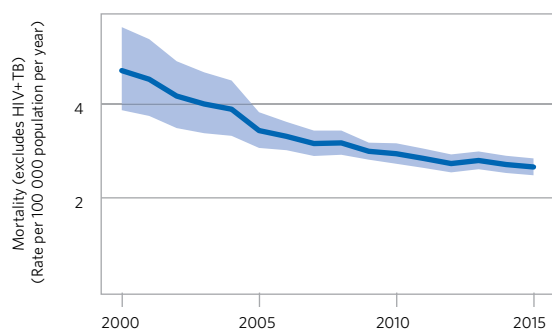
Data are as reported to WHO. Estimates of TB and MDR/RR-TB burden are produced by WHO in consultation with countries. Estimates are rounded and totals are computed prior to rounding.

^a Ranges represent uncertainty intervals.

^b MDR is TB resistant to rifampicin and isoniazid; RR is TB resistant to rifampicin.

^c Includes cases with unknown previous TB treatment history.

^d Includes patients diagnosed before 2015 and patients who were not laboratory-confirmed.



China

Estimates of TB burden,^a 2015

	Number (thousands)	Rate (per 100 000 population)
Mortality (excludes HIV+TB)	35 (34-37)	2.6 (2.5-2.7)
Mortality (HIV+TB only)	2.6 (1.2-4.5)	0.19 (0.09-0.33)
Incidence (includes HIV+TB)	918 (788-1 060)	67 (57-77)
Incidence (HIV+TB only)	15 (12-19)	1.1 (0.86-1.4)
Incidence (MDR/RR-TB) ^b	70 (55-84)	5.1 (4-6.1)

Estimated TB incidence by age and sex (thousands),^a 2015

	0-14 years	> 14 years	Total
Females	37 (23-52)	258 (157-359)	296 (181-411)
Males	38 (26-49)	585 (459-711)	622 (485-760)
Total	75 (58-92)	843 (767-919)	918 (788-1 060)

TB case notifications, 2015

Total cases notified	804 163
Total new and relapse	798 439
— % tested with rapid diagnostics at time of diagnosis	
— % with known HIV status	47%
— % pulmonary	96%
— % bacteriologically confirmed among pulmonary	31%

Universal health coverage and social protection

TB treatment coverage (notified/estimated incidence), 2015	87% (75-100)
TB patients facing catastrophic total costs	
TB case fatality ratio (estimated mortality/estimated incidence), 2015	0.04 (0.04-0.05)

TB/HIV care in new and relapse TB patients, 2015

	Number	(%)
Patients with known HIV-status who are HIV-positive	10 034	3%
— on antiretroviral therapy	3 750	37%

Drug-resistant TB care, 2015

	New cases	Previously treated cases	Total number ^c
Estimated MDR/RR-TB cases among notified pulmonary TB cases			57 000 (48 000-67 000)
Estimated % of TB cases with MDR/RR-TB	6.6% (5.3-7.9)	30% (25-34)	
% notified tested for rifampicin resistance	8%	0%	93 593
MDR/RR-TB cases tested for resistance to second-line drugs			
Laboratory-confirmed cases		MDR/RR-TB: 9 662, XDR-TB: 357	
Patients started on treatment ^d		MDR/RR-TB: 5 691, XDR-TB: 122	

Treatment success rate and cohort size

	Success	Cohort
New and relapse cases registered in 2014	94%	817 318
Previously treated cases, excluding relapse, registered in 2014	88%	6 679
HIV-positive TB cases, all types, registered in 2014	86%	2 169
MDR/RR-TB cases started on second-line treatment in 2013	55%	2 184
XDR-TB cases started on second-line treatment in 2013	22%	159

TB preventive treatment, 2015

% of HIV-positive people (newly enrolled in care) on preventive treatment	
% of children (aged < 5) household contacts of bacteriologically-confirmed TB cases on preventive treatment	

TB financing, 2016

National TB budget (US\$ millions)	372
Funding source	97% domestic, 2% international, 1% unfunded

Data are as reported to WHO. Estimates of TB and MDR/RR-TB burden are produced by WHO in consultation with countries. Estimates are rounded and totals are computed prior to rounding.

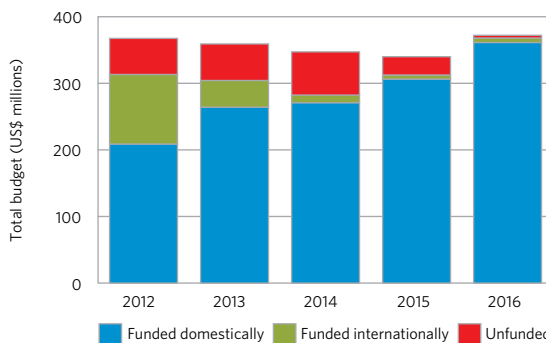
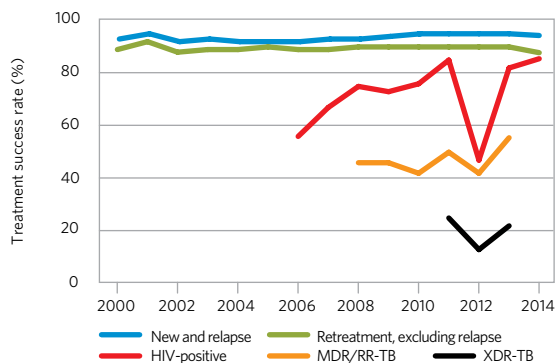
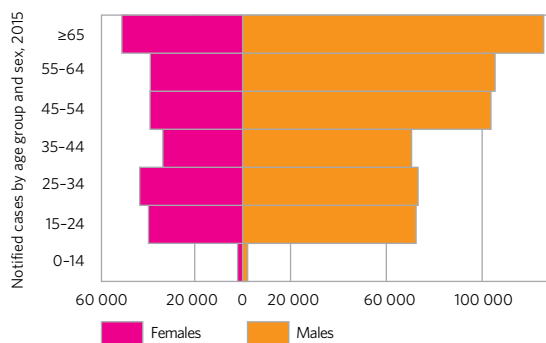
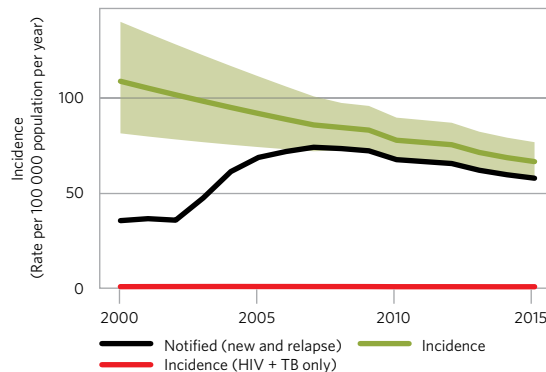
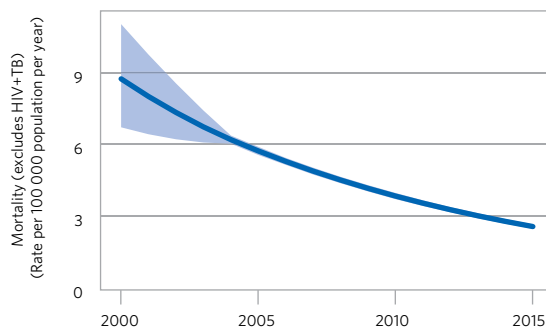
^a Ranges represent uncertainty intervals.

^b MDR is TB resistant to rifampicin and isoniazid; RR is TB resistant to rifampicin.

^c Includes cases with unknown previous TB treatment history.

^d Includes patients diagnosed before 2015 and patients who were not laboratory-confirmed.

population 2015 :: **1 376 million**



Democratic People's Republic of Korea

population 2015 :: 25 million

Estimates of TB burden,^a 2015

	Number (thousands)	Rate (per 100 000 population)
Mortality (excludes HIV+TB)	15 (10–22)	61 (40–87)
Mortality (HIV+TB only)	0.037 (0.016–0.065)	0.15 (0.07–0.26)
Incidence (includes HIV+TB)	141 (109–178)	561 (432–706)
Incidence (HIV+TB only)	0.45 (0.32–0.6)	1.8 (1.3–2.4)
Incidence (MDR/RR-TB) ^b	6 (3.4–8.6)	24 (14–34)

Estimated TB incidence by age and sex (thousands),^a 2015

	0–14 years	> 14 years	Total
Females	4.9 (2–7.8)	49 (30–69)	54 (32–76)
Males	6 (3.7–8.3)	81 (61–101)	87 (65–109)
Total	11 (7.4–14)	130 (111–149)	141 (109–178)

TB case notifications, 2015

Total cases notified	120 722
Total new and relapse	112 840
— % tested with rapid diagnostics at time of diagnosis	
— % with known HIV status	0%
— % pulmonary	82%
— % bacteriologically confirmed among pulmonary	50%

Universal health coverage and social protection

TB treatment coverage (notified/estimated incidence), 2015	80% (64–100)
TB patients facing catastrophic total costs	
TB case fatality ratio (estimated mortality/estimated incidence), 2015	0.11 (0.07–0.17)

TB/HIV care in new and relapse TB patients, 2015

	Number	(%)
Patients with known HIV-status who are HIV-positive	0	
— on antiretroviral therapy	0	

Drug-resistant TB care, 2015

	New cases	Previously treated cases	Total number ^c
Estimated MDR/RR-TB cases among notified pulmonary TB cases			4 600 (2 600–6 500)
Estimated % of TB cases with MDR/RR-TB	2.2% (0.51–3.9)	16% (8.4–24)	
% notified tested for rifampicin resistance	0%	2%	336
MDR/RR-TB cases tested for resistance to second-line drugs			0
Laboratory-confirmed cases		MDR/RR-TB: 209, XDR-TB: 0	
Patients started on treatment ^d		MDR/RR-TB: 125, XDR-TB: 0	

Treatment success rate and cohort size

	Success	Cohort
New and relapse cases registered in 2014	91%	103 045
Previously treated cases, excluding relapse, registered in 2014	82%	7 245
HIV-positive TB cases, all types, registered in 2014		0
MDR/RR-TB cases started on second-line treatment in 2013	84%	170
XDR-TB cases started on second-line treatment in 2013		0

TB preventive treatment, 2015

% of HIV-positive people (newly enrolled in care) on preventive treatment	
% of children (aged < 5) household contacts of bacteriologically-confirmed TB cases on preventive treatment	

TB financing, 2016

National TB budget (US\$ millions)	30
Funding source	19% domestic, 27% international, 54% unfunded

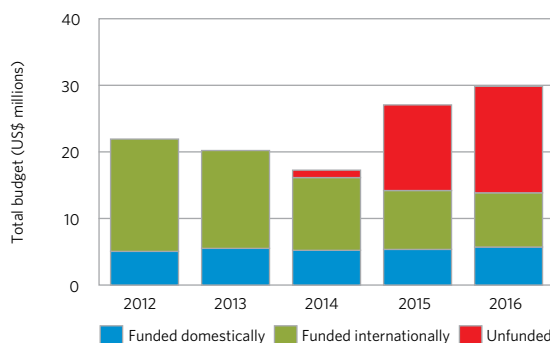
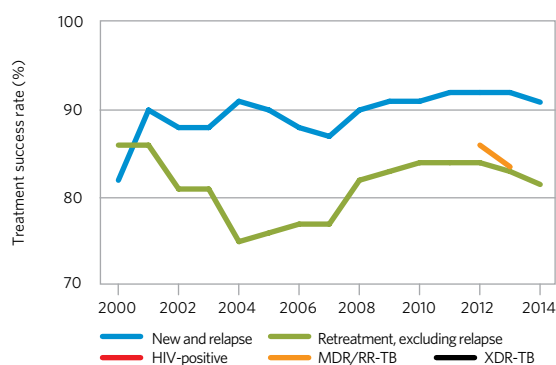
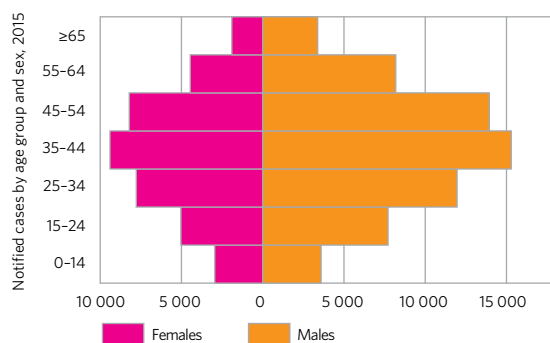
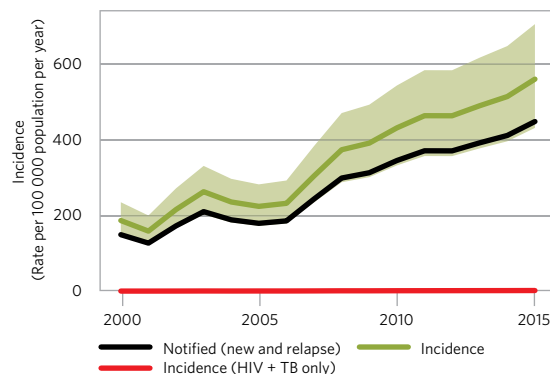
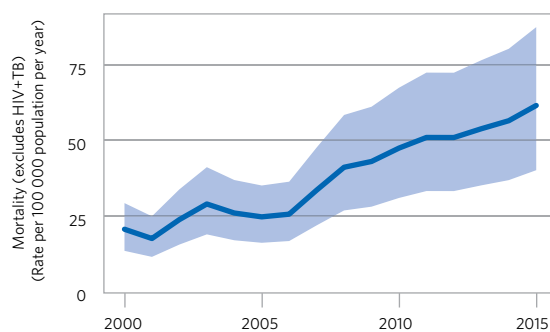
Data are as reported to WHO. Estimates of TB and MDR/RR-TB burden are produced by WHO in consultation with countries. Estimates are rounded and totals are computed prior to rounding.

^a Ranges represent uncertainty intervals.

^b MDR is TB resistant to rifampicin and isoniazid; RR is TB resistant to rifampicin.

^c Includes cases with unknown previous TB treatment history.

^d Includes patients diagnosed before 2015 and patients who were not laboratory-confirmed.



Democratic Republic of the Congo

population 2015 :: **77 million**

Estimates of TB burden,^a 2015

	Number (thousands)	Rate (per 100 000 population)
Mortality (excludes HIV+TB)	51 (30-77)	66 (39-99)
Mortality (HIV+TB only)	16 (13-20)	21 (17-26)
Incidence (includes HIV+TB)	250 (162-357)	324 (210-463)
Incidence (HIV+TB only)	39 (23-57)	50 (30-74)
Incidence (MDR/RR-TB) ^b	10 (4.6-15)	13 (6-19)

Estimated TB incidence by age and sex (thousands),^a 2015

	0-14 years	> 14 years	Total
Females	18 (8.8-27)	91 (43-139)	109 (52-165)
Males	15 (9-21)	126 (86-167)	142 (95-188)
Total	33 (21-45)	217 (162-272)	250 (162-357)

TB case notifications, 2015

Total cases notified	120 508
Total new and relapse	119 213
— % tested with rapid diagnostics at time of diagnosis	10%
— % with known HIV status	50%
— % pulmonary	82%
— % bacteriologically confirmed among pulmonary	83%

Universal health coverage and social protection

TB treatment coverage (notified/estimated incidence), 2015	48% (33-74)
TB patients facing catastrophic total costs	
TB case fatality ratio (estimated mortality/estimated incidence), 2015	0.28 (0.16-0.46)

TB/HIV care in new and relapse TB patients, 2015

	Number	(%)
Patients with known HIV-status who are HIV-positive	7 154	12%
— on antiretroviral therapy	4 776	67%

Drug-resistant TB care, 2015

	New cases	Previously treated cases	Total number ^c
Estimated MDR/RR-TB cases among notified pulmonary TB cases			4 000 (2 300-5 700)
Estimated % of TB cases with MDR/RR-TB	3.2% (1.4-5)	14% (6.9-21)	
% notified tested for rifampicin resistance	2%	76%	9 028
MDR/RR-TB cases tested for resistance to second-line drugs			6
Laboratory-confirmed cases		MDR/RR-TB: 499, XDR-TB: 4	
Patients started on treatment ^d		MDR/RR-TB: 413, XDR-TB: 0	

Treatment success rate and cohort size

	Success	Cohort
New cases registered in 2014	89%	112 969
Previously treated cases registered in 2014	65%	1 099
HIV-positive TB cases, all types, registered in 2014		
MDR/RR-TB cases started on second-line treatment in 2013	63%	268
XDR-TB cases started on second-line treatment in 2013		0

TB preventive treatment, 2015

% of HIV-positive people (newly enrolled in care) on preventive treatment	
% of children (aged < 5) household contacts of bacteriologically-confirmed TB cases on preventive treatment	

TB financing, 2016

National TB budget (US\$ millions)	60
Funding source	3% domestic, 60% international, 37% unfunded

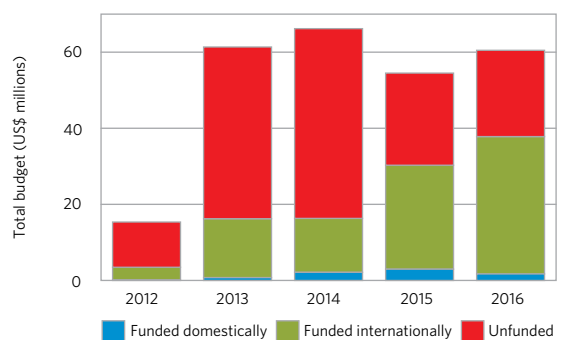
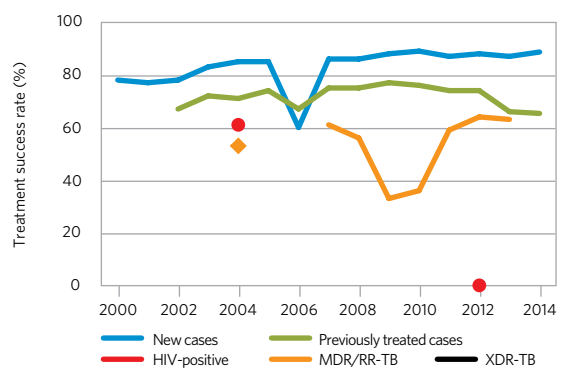
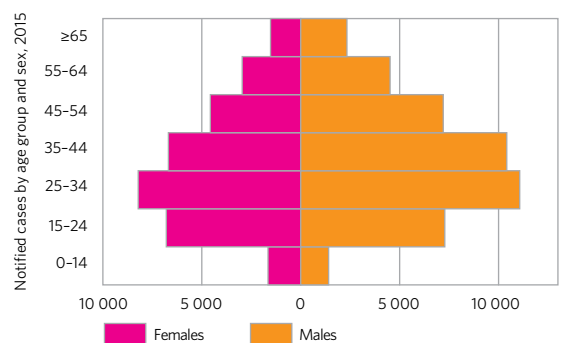
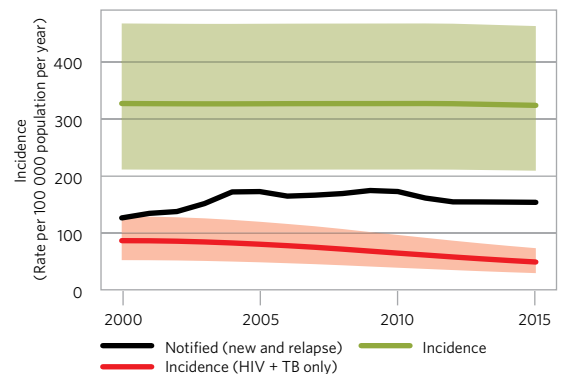
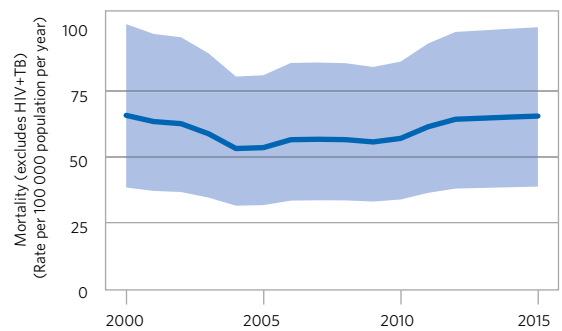
Data are as reported to WHO. Estimates of TB and MDR/RR-TB burden are produced by WHO in consultation with countries. Estimates are rounded and totals are computed prior to rounding.

^a Ranges represent uncertainty intervals.

^b MDR is TB resistant to rifampicin and isoniazid; RR is TB resistant to rifampicin.

^c Includes cases with unknown previous TB treatment history.

^d Includes patients diagnosed before 2015 and patients who were not laboratory-confirmed.



Ethiopia

population 2015 :: **99 million**

Estimates of TB burden,^a 2015

	Number (thousands)	Rate (per 100 000 population)
Mortality (excludes HIV+TB)	25 (15-38)	26 (15-38)
Mortality (HIV+TB only)	3.9 (1.6-7.3)	4 (1.6-7.4)
Incidence (includes HIV+TB)	191 (141-249)	192 (142-250)
Incidence (HIV+TB only)	16 (10-23)	16 (10-23)
Incidence (MDR/RR-TB) ^b	6.2 (3.5-8.9)	6.2 (3.5-9)

Estimated TB incidence by age and sex (thousands),^a 2015

	0-14 years	> 14 years	Total
Females	7.3 (2.2-12)	77 (50-105)	85 (52-117)
Males	11 (6.9-15)	95 (70-120)	106 (77-136)
Total	18 (12-24)	173 (143-203)	191 (141-249)

TB case notifications, 2015

Total cases notified	137 960
Total new and relapse	135 951
— % tested with rapid diagnostics at time of diagnosis	6%
— % with known HIV status	77%
— % pulmonary	70%
— % bacteriologically confirmed among pulmonary	54%

Universal health coverage and social protection

TB treatment coverage (notified/estimated incidence), 2015	71% (55-96)
TB patients facing catastrophic total costs	
TB case fatality ratio (estimated mortality/estimated incidence), 2015	0.16 (0.09-0.25)

TB/HIV care in new and relapse TB patients, 2015

	Number	(%)
Patients with known HIV-status who are HIV-positive	8 625	8%
— on antiretroviral therapy	6 848	79%

Drug-resistant TB care, 2015

	New cases	Previously treated cases	Total number ^c
Estimated MDR/RR-TB cases among notified pulmonary TB cases			3 300 (2 100-4 600)
Estimated % of TB cases with MDR/RR-TB	2.7% (1.5-4)	14% (5.6-23)	
% notified tested for rifampicin resistance	9%	75%	24 073
MDR/RR-TB cases tested for resistance to second-line drugs			113
Laboratory-confirmed cases		MDR/RR-TB: 597, XDR-TB: 2	
Patients started on treatment ^d		MDR/RR-TB: 597, XDR-TB: 2	

Treatment success rate and cohort size

	Success	Cohort
New cases registered in 2014	89%	121 563
Previously treated cases registered in 2014		
HIV-positive TB cases, all types, registered in 2014		
MDR/RR-TB cases started on second-line treatment in 2013	68%	397
XDR-TB cases started on second-line treatment in 2013		

TB preventive treatment, 2015

% of HIV-positive people (newly enrolled in care) on preventive treatment	47%
% of children (aged < 5) household contacts of bacteriologically-confirmed TB cases on preventive treatment	

TB financing, 2016

National TB budget (US\$ millions)	81
Funding source	11% domestic, 51% international, 38% unfunded

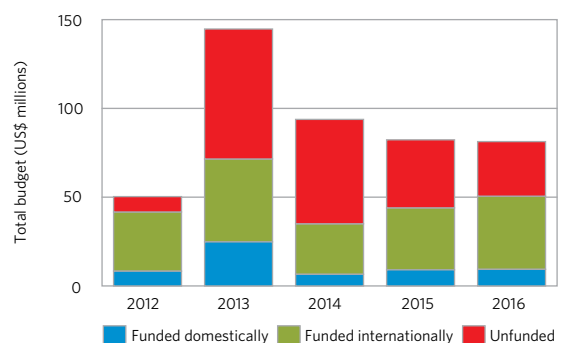
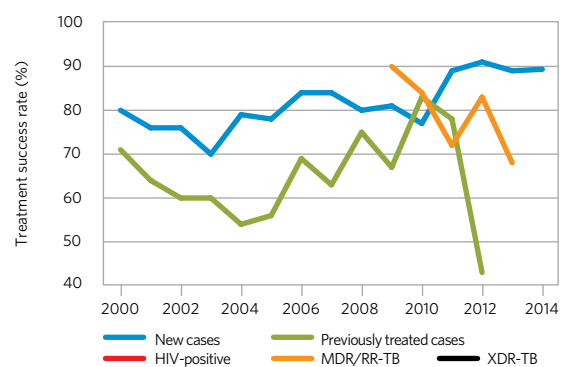
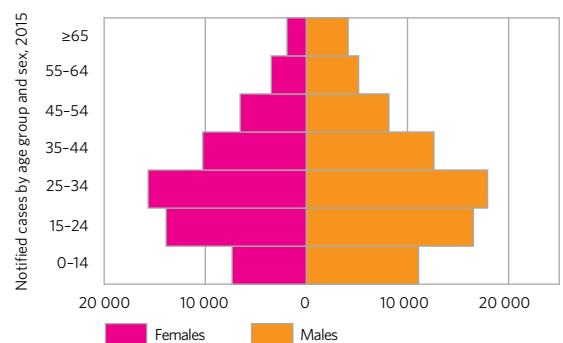
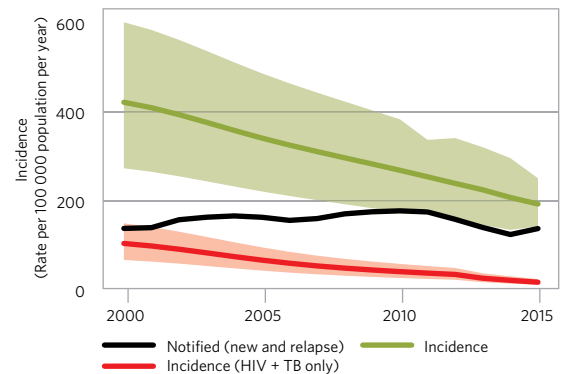
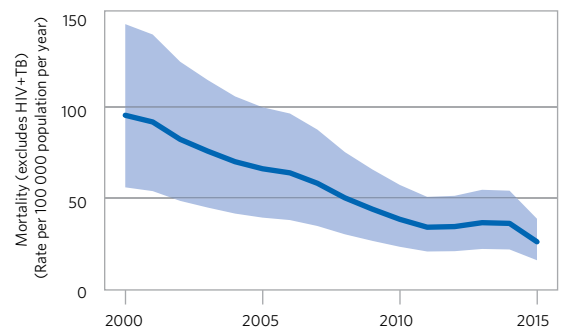
Data are as reported to WHO. Estimates of TB and MDR/RR-TB burden are produced by WHO in consultation with countries. Estimates are rounded and totals are computed prior to rounding.

^a Ranges represent uncertainty intervals.

^b MDR is TB resistant to rifampicin and isoniazid; RR is TB resistant to rifampicin.

^c Includes cases with unknown previous TB treatment history.

^d Includes patients diagnosed before 2015 and patients who were not laboratory-confirmed.



India

population 2015 :: **1 311 million**

Estimates of TB burden,^a 2015

	Number (thousands)	Rate (per 100 000 population)
Mortality (excludes HIV+TB)	480 (380-590)	36 (29-45)
Mortality (HIV+TB only)	37 (21-57)	2.8 (1.6-4.3)
Incidence (includes HIV+TB)	2 840 (1 470-4 650)	217 (112-355)
Incidence (HIV+TB only)	113 (58-186)	8.6 (4.4-14)
Incidence (MDR/RR-TB) ^b	130 (88-180)	9.9 (6.7-14)

Estimated TB incidence by age and sex (thousands),^a 2015

	0-14 years	> 14 years	Total
Females	136 (78-193)	860 (112-1 610)	995 (191-1 800)
Males	119 (78-161)	1 730 (1 070-2 380)	1 850 (1 150-2 540)
Total	255 (181-328)	2 590 (1 750-3 420)	2 840 (1 470-4 650)

TB case notifications, 2015

Total cases notified	1 740 435
Total new and relapse	1 667 136
— % tested with rapid diagnostics at time of diagnosis	
— % with known HIV status	67%
— % pulmonary	82%
— % bacteriologically confirmed among pulmonary	64%

Universal health coverage and social protection

TB treatment coverage (notified/estimated incidence), 2015	59% (36-110)
TB patients facing catastrophic total costs	
TB case fatality ratio (estimated mortality/estimated incidence), 2015	0.20 (0.11-0.36)

TB/HIV care in new and relapse TB patients, 2015

	Number	(%)
Patients with known HIV-status who are HIV-positive	44 652	4%
— on antiretroviral therapy	40 925	92%

Drug-resistant TB care, 2015

	New cases	Previously treated cases	Total number ^c
Estimated MDR/RR-TB cases among notified pulmonary TB cases			79 000 (72 000-87 000)
Estimated % of TB cases with MDR/RR-TB	2.5% (2.1-3.1)	16% (14-18)	
% notified tested for rifampicin resistance	6%	60%	275 321
MDR/RR-TB cases tested for resistance to second-line drugs			8 976
Laboratory-confirmed cases		MDR/RR-TB: 28 876, XDR-TB: 3 048	
Patients started on treatment ^d		MDR/RR-TB: 26 966, XDR-TB: 2 130	

Treatment success rate and cohort size

	Success	Cohort
New and relapse cases registered in 2014	74%	1 609 547
Previously treated cases, excluding relapse, registered in 2014	65%	74 368
HIV-positive TB cases, all types, registered in 2014	76%	44 257
MDR/RR-TB cases started on second-line treatment in 2013	46%	15 906
XDR-TB cases started on second-line treatment in 2013	37%	248

TB preventive treatment, 2015

% of HIV-positive people (newly enrolled in care) on preventive treatment	
% of children (aged < 5) household contacts of bacteriologically-confirmed TB cases on preventive treatment	

TB financing, 2016

National TB budget (US\$ millions)	280
Funding source	38% domestic, 62% international, 0% unfunded

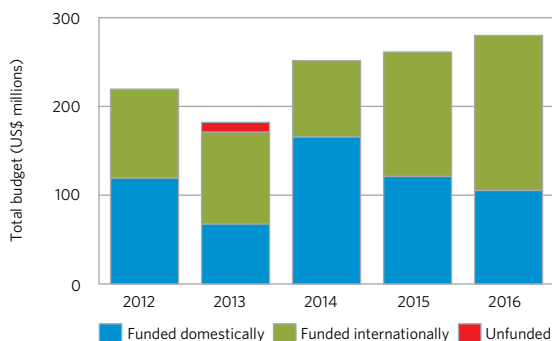
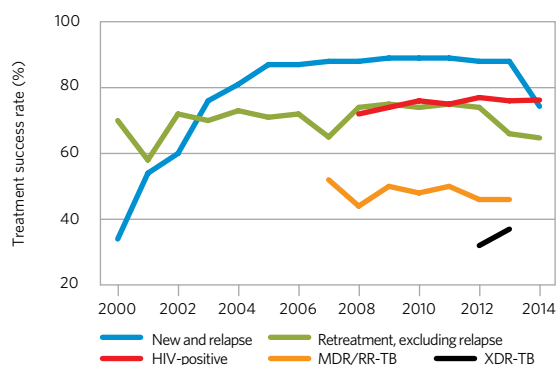
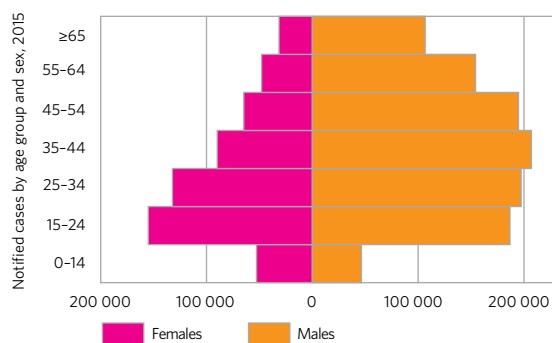
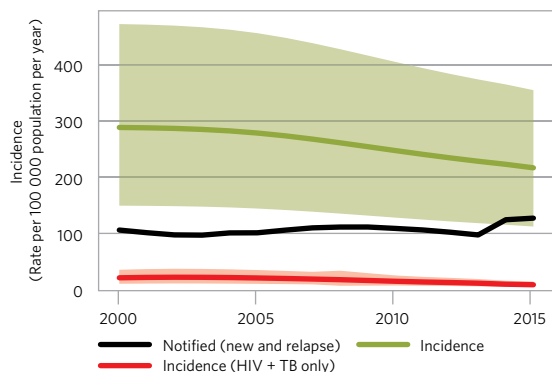
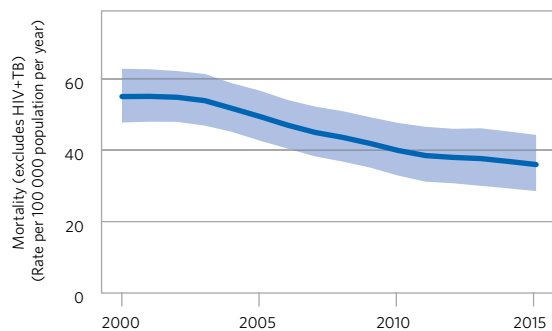
Data are as reported to WHO. Estimates of TB and MDR/RR-TB burden are produced by WHO in consultation with countries. Estimates are rounded and totals are computed prior to rounding.

^a Ranges represent uncertainty intervals. Estimates of TB incidence and mortality are interim in nature, pending results from the national TB prevalence survey planned for 2017/2018.

^b MDR is TB resistant to rifampicin and isoniazid; RR is TB resistant to rifampicin.

^c Includes cases with unknown previous TB treatment history.

^d Includes patients diagnosed before 2015 and patients who were not laboratory-confirmed.



Indonesia

population 2015 :: 258 million

Estimates of TB burden,^a 2015

	Number (thousands)	Rate (per 100 000 population)
Mortality (excludes HIV+TB)	100 (67-150)	40 (26-57)
Mortality (HIV+TB only)	26 (20-34)	10 (7.6-13)
Incidence (includes HIV+TB)	1 020 (658-1 450)	395 (255-564)
Incidence (HIV+TB only)	78 (48-116)	30 (18-45)
Incidence (MDR/RR-TB) ^b	32 (19-45)	12 (7.4-17)

Estimated TB incidence by age and sex (thousands),^a 2015

	0-14 years	> 14 years	Total
Females	36 (16-57)	384 (194-573)	420 (210-630)
Males	39 (23-54)	559 (391-726)	597 (415-780)
Total	75 (49-100)	942 (730-1 150)	1 020 (658-1 450)

TB case notifications, 2015

Total cases notified	330 729
Total new and relapse	328 895
— % tested with rapid diagnostics at time of diagnosis	
— % with known HIV status	11%
— % pulmonary	93%
— % bacteriologically confirmed among pulmonary	64%

Universal health coverage and social protection

TB treatment coverage (notified/estimated incidence), 2015	32% (23-50)
TB patients facing catastrophic total costs	
TB case fatality ratio (estimated mortality/estimated incidence), 2015	0.13 (0.08-0.21)

TB/HIV care in new and relapse TB patients, 2015

	Number	(%)
Patients with known HIV-status who are HIV-positive	3 523	10%
— on antiretroviral therapy	757	21%

Drug-resistant TB care, 2015

	New cases	Previously treated cases	Total number ^c
Estimated MDR/RR-TB cases among notified pulmonary TB cases			10 000 (8 000-12 000)
Estimated % of TB cases with MDR/RR-TB	2.8% (2.2-3.5)	16% (10-20)	
% notified tested for rifampicin resistance	<1%	80%	9 764
MDR/RR-TB cases tested for resistance to second-line drugs			895
Laboratory-confirmed cases		MDR/RR-TB: 2 135, XDR-TB: 28	
Patients started on treatment ^d		MDR/RR-TB: 1 519, XDR-TB: 22	

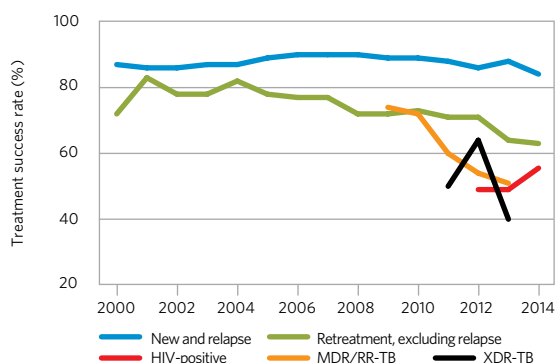
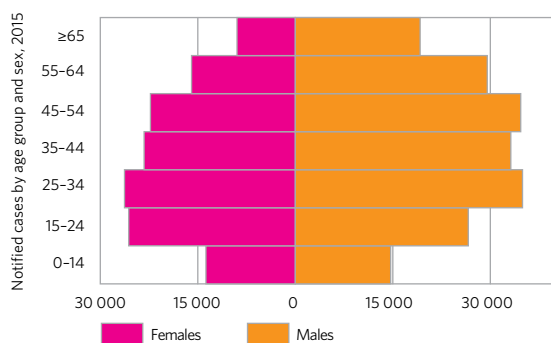
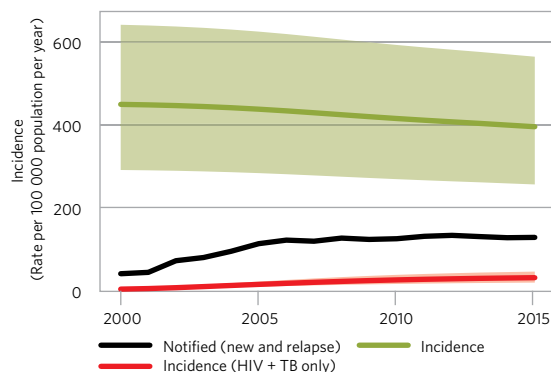
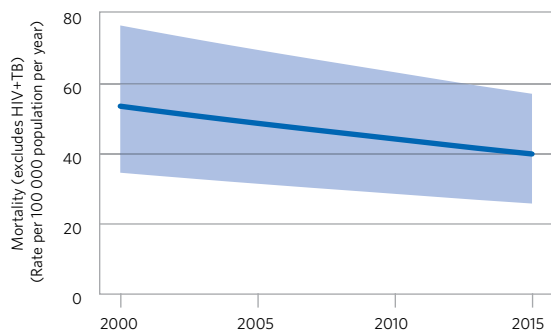
Treatment success rate and cohort size

	Success	Cohort
New and relapse cases registered in 2014	84%	322 806
Previously treated cases, excluding relapse, registered in 2014	63%	1 733
HIV-positive TB cases, all types, registered in 2014	56%	2 548
MDR/RR-TB cases started on second-line treatment in 2013	51%	809
XDR-TB cases started on second-line treatment in 2013	40%	10

TB preventive treatment, 2015

% of HIV-positive people (newly enrolled in care) on preventive treatment	2%
% of children (aged < 5) household contacts of bacteriologically-confirmed TB cases on preventive treatment	

TB financing, 2016^e



Data are as reported to WHO. Estimates of TB and MDR/RR-TB burden are produced by WHO in consultation with countries. Estimates are rounded and totals are computed prior to rounding.

^a Ranges represent uncertainty intervals.

^b MDR is TB resistant to rifampicin and isoniazid; RR is TB resistant to rifampicin.

^c Includes cases with unknown previous TB treatment history.

^d Includes patients diagnosed before 2015 and patients who were not laboratory-confirmed.

^e Finance data are not shown because the government of Indonesia is currently reviewing contributions from domestic sources.

Kenya

population 2015 :: 46 million

Estimates of TB burden,^a 2015

	Number (thousands)	Rate (per 100 000 population)
Mortality (excludes HIV+TB)	9 (6.1-12)	20 (13-27)
Mortality (HIV+TB only)	7.2 (0.71-21)	16 (1.5-45)
Incidence (includes HIV+TB)	107 (87-129)	233 (189-281)
Incidence (HIV+TB only)	36 (29-43)	78 (63-94)
Incidence (MDR/RR-TB) ^b	2 (1.3-2.8)	4.3 (2.8-6.1)

Estimated TB incidence by age and sex (thousands),^a 2015

	0-14 years	> 14 years	Total
Females	6.1 (3.4-8.9)	35 (22-48)	41 (26-57)
Males	6.8 (4.6-9)	59 (45-73)	66 (50-82)
Total	13 (9.6-16)	94 (82-106)	107 (87-129)

TB case notifications, 2015

Total cases notified	81 518
Total new and relapse	81 292
— % tested with rapid diagnostics at time of diagnosis	10%
— % with known HIV status	97%
— % pulmonary	82%
— % bacteriologically confirmed among pulmonary	59%

Universal health coverage and social protection

TB treatment coverage (notified/estimated incidence), 2015	76% (63-93)
TB patients facing catastrophic total costs	
TB case fatality ratio (estimated mortality/estimated incidence), 2015	0.15 (0.07-0.28)

TB/HIV care in new and relapse TB patients, 2015

	Number	(%)
Patients with known HIV-status who are HIV-positive	26 288	33%
— on antiretroviral therapy	25 030	95%

Drug-resistant TB care, 2015

	New cases	Previously treated cases	Total number ^c
Estimated MDR/RR-TB cases among notified pulmonary TB cases			1 400 (980-1 700)
Estimated % of TB cases with MDR/RR-TB	1.3% (0.68-1.9)	9.4% (8.7-10)	
% notified tested for rifampicin resistance	8%	29%	8 321
MDR/RR-TB cases tested for resistance to second-line drugs			22
Laboratory-confirmed cases		MDR/RR-TB: 368, XDR-TB: 1	
Patients started on treatment ^d		MDR/RR-TB: 368, XDR-TB: 0	

Treatment success rate and cohort size

	Success	Cohort
New and relapse cases registered in 2014	87%	89 294
Previously treated cases, excluding relapse, registered in 2014	78%	227
HIV-positive TB cases, all types, registered in 2014	82%	30 107
MDR/RR-TB cases started on second-line treatment in 2013	82%	266
XDR-TB cases started on second-line treatment in 2013	0%	1

TB preventive treatment, 2015

% of HIV-positive people (newly enrolled in care) on preventive treatment	33%
% of children (aged < 5) household contacts of bacteriologically-confirmed TB cases on preventive treatment	5.5% (5-6)

TB financing, 2016

National TB budget (US\$ millions)	59
Funding source	20% domestic, 80% international, 0% unfunded

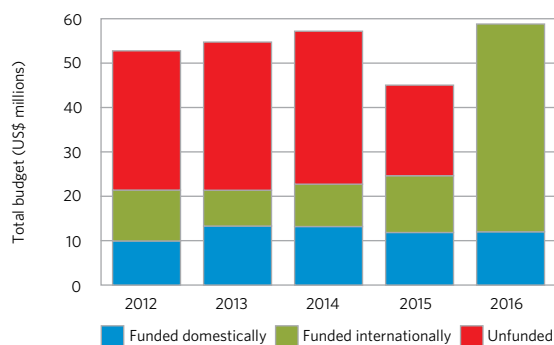
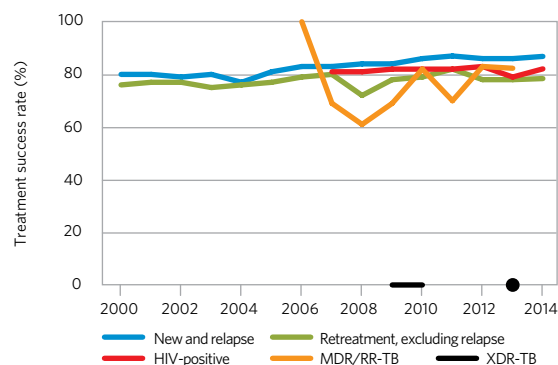
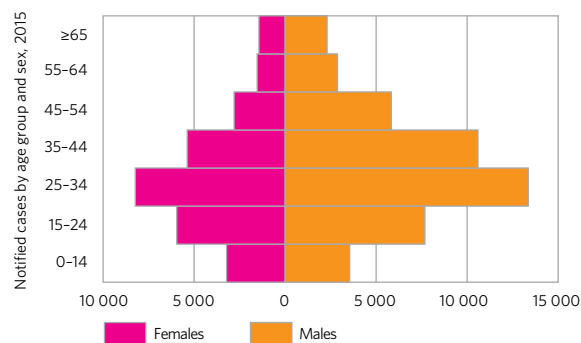
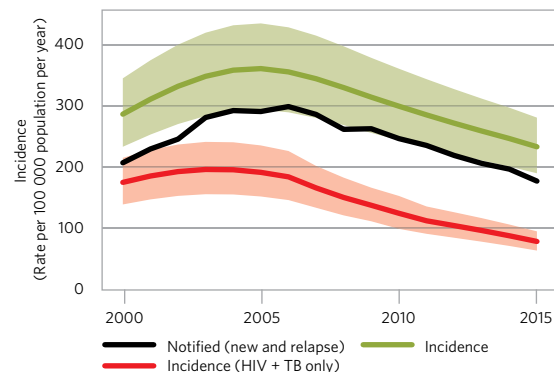
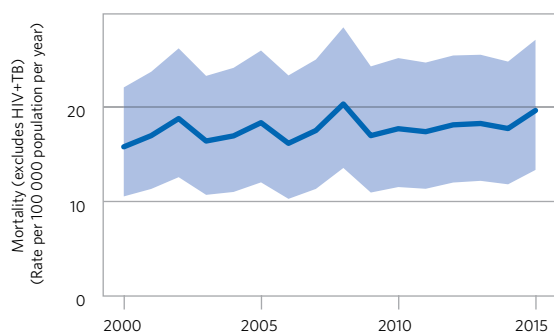
Data are as reported to WHO. Estimates of TB and MDR/RR-TB burden are produced by WHO in consultation with countries. Estimates are rounded and totals are computed prior to rounding.

^a Ranges represent uncertainty intervals.

^b MDR is TB resistant to rifampicin and isoniazid; RR is TB resistant to rifampicin.

^c Includes cases with unknown previous TB treatment history.

^d Includes patients diagnosed before 2015 and patients who were not laboratory-confirmed.



Mozambique

population 2015 :: **28 million**

Estimates of TB burden,^a 2015

	Number (thousands)	Rate (per 100 000 population)
Mortality (excludes HIV+TB)	21 (12-32)	74 (43-115)
Mortality (HIV+TB only)	34 (21-50)	120 (73-178)
Incidence (includes HIV+TB)	154 (100-220)	551 (356-787)
Incidence (HIV+TB only)	79 (50-115)	284 (179-412)
Incidence (MDR/RR-TB) ^b	7.3 (4.1-10)	26 (15-36)

Estimated TB incidence by age and sex (thousands),^a 2015

	0-14 years	> 14 years	Total
Females	7.4 (3-12)	56 (27-86)	64 (30-98)
Males	7.4 (4.2-11)	83 (57-108)	90 (62-119)
Total	15 (9.2-20)	139 (106-172)	154 (100-220)

TB case notifications, 2015

Total cases notified	61 559
Total new and relapse	58 344
— % tested with rapid diagnostics at time of diagnosis	7%
— % with known HIV status	99%
— % pulmonary	89%
— % bacteriologically confirmed among pulmonary	50%

Universal health coverage and social protection

TB treatment coverage (notified/estimated incidence), 2015	38% (27-59)
TB patients facing catastrophic total costs	
TB case fatality ratio (estimated mortality/estimated incidence), 2015	0.37 (0.21-0.6)

TB/HIV care in new and relapse TB patients, 2015

	Number	(%)
Patients with known HIV-status who are HIV-positive	29 827	51%
— on antiretroviral therapy	27 417	92%

Drug-resistant TB care, 2015

	New cases	Previously treated cases	Total number
Estimated MDR/RR-TB cases among notified pulmonary TB cases			2 800 (1 700-3 900)
Estimated % of TB cases with MDR/RR-TB	3.7% (2.4-5)	20% (1.9-37)	
% notified tested for rifampicin resistance	17%	31%	10 937
MDR/RR-TB cases tested for resistance to second-line drugs			195
Laboratory-confirmed cases		MDR/RR-TB: 646, XDR-TB: 29	
Patients started on treatment ^d		MDR/RR-TB: 646, XDR-TB: 16	

Treatment success rate and cohort size

	Success	Cohort
New and relapse cases registered in 2014	89%	55 703
Previously treated cases, excluding relapse, registered in 2014	94%	2 567
HIV-positive TB cases, all types, registered in 2014		
MDR/RR-TB cases started on second-line treatment in 2013	52%	313
XDR-TB cases started on second-line treatment in 2013		

TB preventive treatment, 2015

% of HIV-positive people (newly enrolled in care) on preventive treatment	45%
% of children (aged < 5) household contacts of bacteriologically-confirmed TB cases on preventive treatment	

TB financing, 2016

National TB budget (US\$ millions)	24
Funding source	4% domestic, 72% international, 24% unfunded

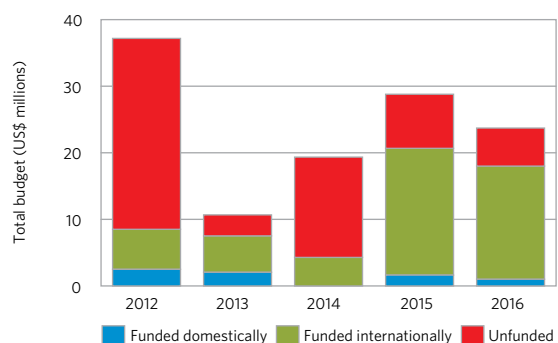
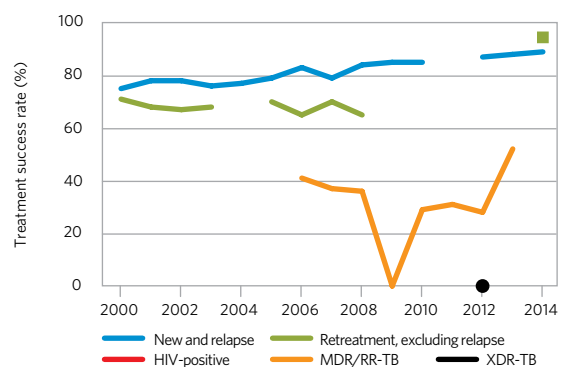
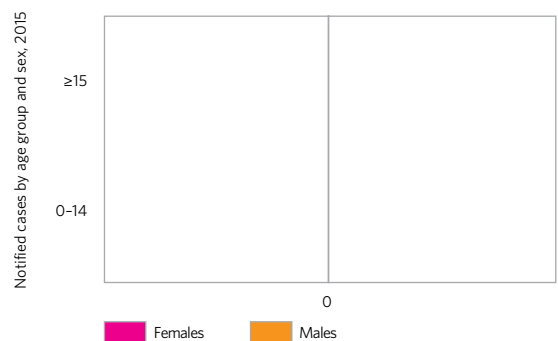
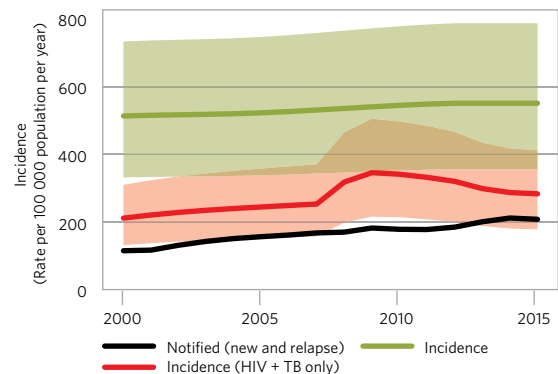
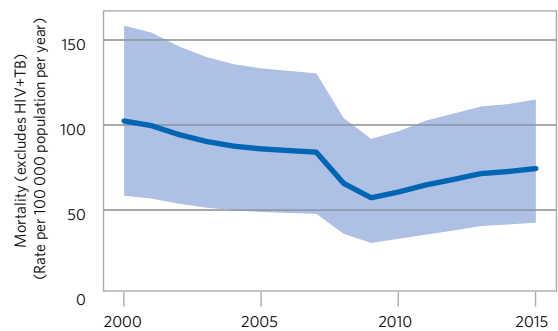
Data are as reported to WHO. Estimates of TB and MDR/RR-TB burden are produced by WHO in consultation with countries. Estimates are rounded and totals are computed prior to rounding.

^a Ranges represent uncertainty intervals.

^b MDR is TB resistant to rifampicin and isoniazid; RR is TB resistant to rifampicin.

^c Includes cases with unknown previous TB treatment history.

^d Includes patients diagnosed before 2015 and patients who were not laboratory-confirmed.



Myanmar

population 2015 :: **54 million**

Estimates of TB burden,^a 2015

	Number (thousands)	Rate (per 100 000 population)
Mortality (excludes HIV+TB)	27 (16-40)	49 (30-74)
Mortality (HIV+TB only)	4.8 (3.5-6.5)	9 (6.4-12)
Incidence (includes HIV+TB)	197 (144-258)	365 (267-479)
Incidence (HIV+TB only)	17 (11-25)	32 (21-47)
Incidence (MDR/RR-TB) ^b	14 (8.9-18)	26 (17-33)

Estimated TB incidence by age and sex (thousands),^a 2015

	0-14 years	> 14 years	Total
Females	6 (2.4-9.6)	66 (35-97)	72 (38-106)
Males	7.7 (4.8-11)	117 (87-147)	125 (92-158)
Total	14 (9.4-18)	183 (152-214)	197 (144-258)

TB case notifications, 2015

Total cases notified	140 700
Total new and relapse	138 447
— % tested with rapid diagnostics at time of diagnosis	22%
— % with known HIV status	65%
— % pulmonary	88%
— % bacteriologically confirmed among pulmonary	39%

Universal health coverage and social protection

TB treatment coverage (notified/estimated incidence), 2015	70% (54-96)
TB patients facing catastrophic total costs	
TB case fatality ratio (estimated mortality/estimated incidence), 2015	0.16 (0.1-0.26)

TB/HIV care in new and relapse TB patients, 2015

	Number	(%)
Patients with known HIV-status who are HIV-positive	7 918	9%
— on antiretroviral therapy	3 034	38%

Drug-resistant TB care, 2015

	New cases	Previously treated cases	Total number ^c
Estimated MDR/RR-TB cases among notified pulmonary TB cases			9 000 (6 400-12 000)
Estimated % of TB cases with MDR/RR-TB	5.1% (3.2-7)	27% (15-39)	
% notified tested for rifampicin resistance	7%	46%	14 599
MDR/RR-TB cases tested for resistance to second-line drugs			43
Laboratory-confirmed cases		MDR/RR-TB: 2 793, XDR-TB: 11	
Patients started on treatment ^d		MDR/RR-TB: 2 207, XDR-TB: 7	

Treatment success rate and cohort size

	Success	Cohort
New and relapse cases registered in 2014	87%	135 984
Previously treated cases, excluding relapse, registered in 2014	73%	3 677
HIV-positive TB cases, all types, registered in 2014	70%	10 782
MDR/RR-TB cases started on second-line treatment in 2013	83%	667
XDR-TB cases started on second-line treatment in 2013		

TB preventive treatment, 2015

% of HIV-positive people (newly enrolled in care) on preventive treatment	10%
% of children (aged < 5) household contacts of bacteriologically-confirmed TB cases on preventive treatment	3.6% (3.3-3.9)

TB financing, 2016

National TB budget (US\$ millions)	69
Funding source	21% domestic, 52% international, 28% unfunded

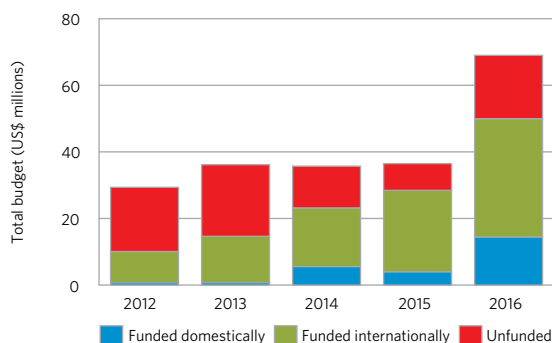
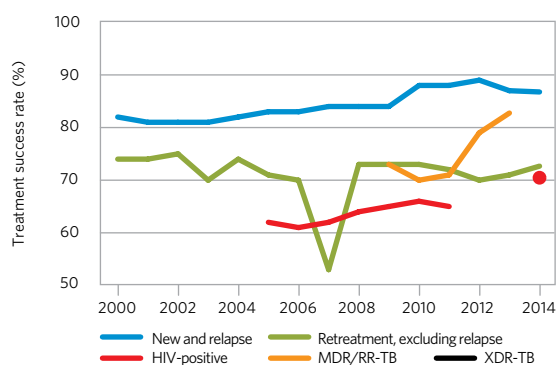
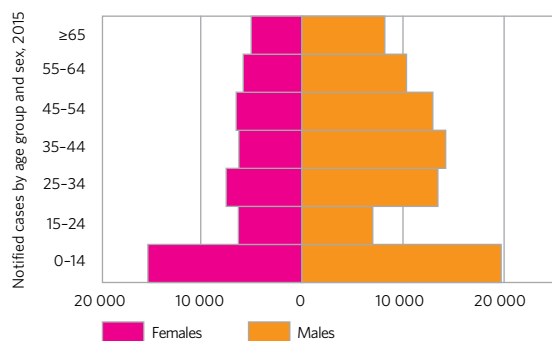
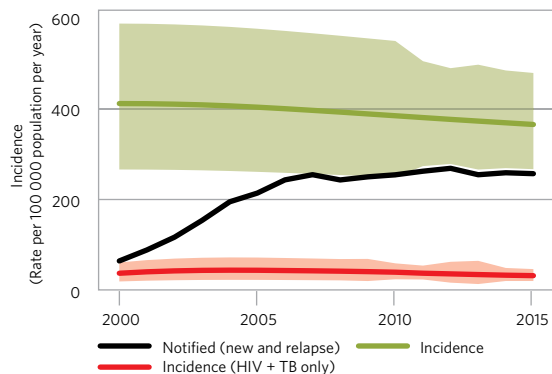
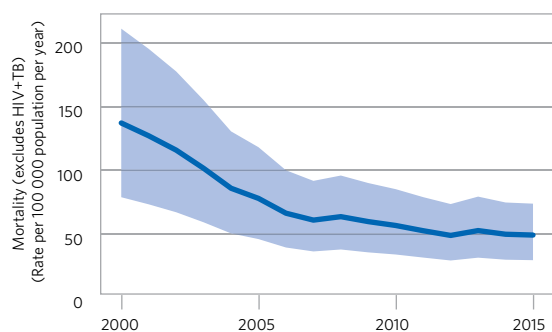
Data are as reported to WHO. Estimates of TB and MDR/RR-TB burden are produced by WHO in consultation with countries. Estimates are rounded and totals are computed prior to rounding.

^a Ranges represent uncertainty intervals.

^b MDR is TB resistant to rifampicin and isoniazid; RR is TB resistant to rifampicin.

^c Includes cases with unknown previous TB treatment history.

^d Includes patients diagnosed before 2015 and patients who were not laboratory-confirmed.



Nigeria

Estimates of TB burden,^a 2015

	Number (thousands)	Rate (per 100 000 population)
Mortality (excludes HIV+TB)	180 (96-290)	99 (53-160)
Mortality (HIV+TB only)	57 (43-74)	31 (24-40)
Incidence (includes HIV+TB)	586 (345-890)	322 (189-488)
Incidence (HIV+TB only)	100 (56-155)	55 (31-85)
Incidence (MDR/RR-TB) ^b	29 (15-43)	16 (8.2-24)

Estimated TB incidence by age and sex (thousands),^a 2015

	0-14 years	> 14 years	Total
Females	33 (14-52)	198 (67-328)	231 (82-380)
Males	34 (20-47)	322 (210-434)	355 (229-481)
Total	67 (43-91)	519 (371-668)	586 (345-890)

TB case notifications, 2015

Total cases notified	90 584
Total new and relapse	87 211
— % tested with rapid diagnostics at time of diagnosis	58%
— % with known HIV status	100%
— % pulmonary	94%
— % bacteriologically confirmed among pulmonary	68%

Universal health coverage and social protection

TB treatment coverage (notified/estimated incidence), 2015	15% (9.8-25)
TB patients facing catastrophic total costs	
TB case fatality ratio (estimated mortality/estimated incidence), 2015	0.43 (0.22-0.77)

TB/HIV care in new and relapse TB patients, 2015

	Number	(%)
Patients with known HIV-status who are HIV-positive	14 846	17%
— on antiretroviral therapy	11 141	75%

Drug-resistant TB care, 2015

	New cases	Previously treated cases	Total number ^c
Estimated MDR/RR-TB cases among notified pulmonary TB cases			4 700 (3 700-5 700)
Estimated % of TB cases with MDR/RR-TB	4.3% (3.2-5.4)	25% (19-31)	
% notified tested for rifampicin resistance	40%	64%	50 274
MDR/RR-TB cases tested for resistance to second-line drugs			
Laboratory-confirmed cases		MDR/RR-TB: 1 241, XDR-TB: 1	
Patients started on treatment ^d		MDR/RR-TB: 656, XDR-TB: 1	

Treatment success rate and cohort size

	Success	Cohort
New and relapse cases registered in 2014	87%	86 464
Previously treated cases, excluding relapse, registered in 2014	83%	4 890
HIV-positive TB cases, all types, registered in 2014	79%	17 014
MDR/RR-TB cases started on second-line treatment in 2013	77%	339
XDR-TB cases started on second-line treatment in 2013	0%	2

TB preventive treatment, 2015

% of HIV-positive people (newly enrolled in care) on preventive treatment	20%
% of children (aged < 5) household contacts of bacteriologically-confirmed TB cases on preventive treatment	16% (15-18)

TB financing, 2016

National TB budget (US\$ millions)	257
Funding source	12% domestic, 33% international, 55% unfunded

Data are as reported to WHO. Estimates of TB and MDR/RR-TB burden are produced by WHO in consultation with countries. Estimates are rounded and totals are computed prior to rounding.

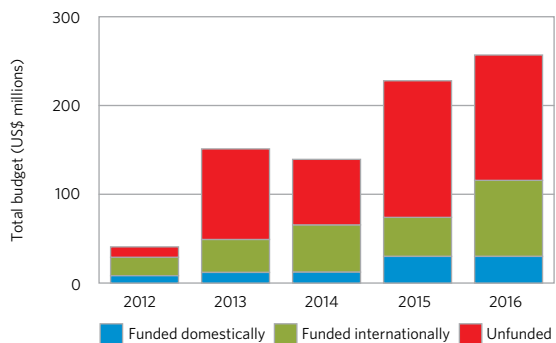
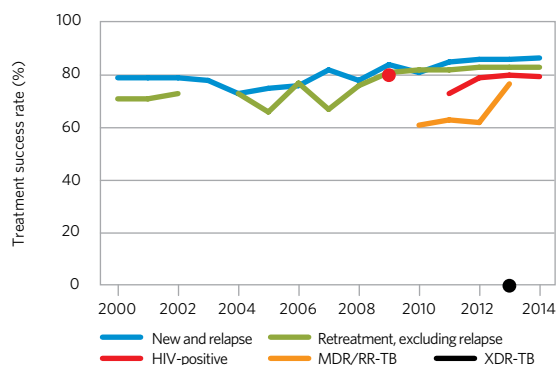
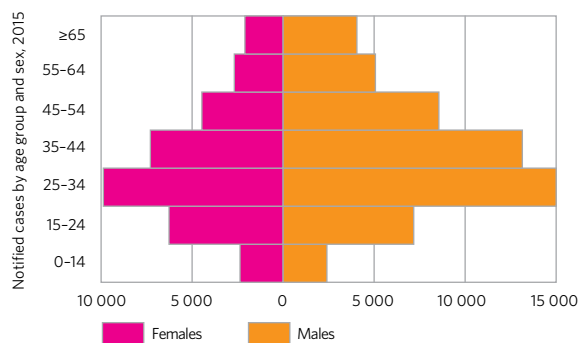
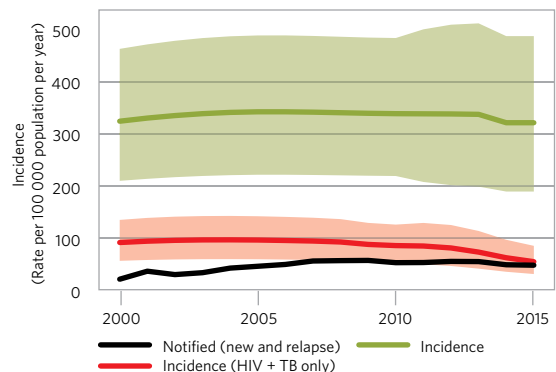
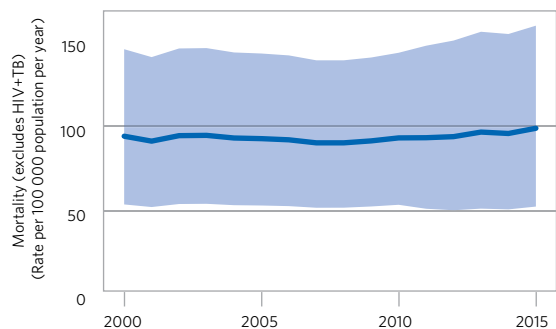
^a Ranges represent uncertainty intervals.

^b MDR is TB resistant to rifampicin and isoniazid; RR is TB resistant to rifampicin.

^c Includes cases with unknown previous TB treatment history.

^d Includes patients diagnosed before 2015 and patients who were not laboratory-confirmed.

population 2015 :: 182 million



Pakistan

Estimates of TB burden,^a 2015

	Number (thousands)	Rate (per 100 000 population)
Mortality (excludes HIV+TB)	44 (9.3-110)	23 (4.9-56)
Mortality (HIV+TB only)	1.6 (1.1-2.1)	0.83 (0.6-1.1)
Incidence (includes HIV+TB)	510 (330-729)	270 (175-386)
Incidence (HIV+TB only)	8.8 (5.4-13)	4.6 (2.8-6.9)
Incidence (MDR/RR-TB) ^b	26 (16-36)	14 (8.5-19)

Estimated TB incidence by age and sex (thousands),^a 2015

	0-14 years	> 14 years	Total
Females	25 (12-37)	231 (141-320)	255 (153-357)
Males	21 (13-29)	234 (163-305)	255 (175-335)
Total	46 (30-61)	465 (357-573)	510 (330-729)

TB case notifications, 2015

Total cases notified	331 809
Total new and relapse	323 856
— % tested with rapid diagnostics at time of diagnosis	
— % with known HIV status	4%
— % pulmonary	81%
— % bacteriologically confirmed among pulmonary	51%

Universal health coverage and social protection

TB treatment coverage (notified/estimated incidence), 2015	63% (44-98)
TB patients facing catastrophic total costs	
TB case fatality ratio (estimated mortality/estimated incidence), 2015	0.09 (0.02-0.23)

TB/HIV care in new and relapse TB patients, 2015

	Number	(%)
Patients with known HIV-status who are HIV-positive	59	<1%
— on antiretroviral therapy	59	100%

Drug-resistant TB care, 2015

	New cases	Previously treated cases	Total number ^c
Estimated MDR/RR-TB cases among notified pulmonary TB cases			14 000 (11 000-16 000)
Estimated % of TB cases with MDR/RR-TB	4.2% (3.2-5.3)	16% (15-17)	
% notified tested for rifampicin resistance	1%	84%	23 078
MDR/RR-TB cases tested for resistance to second-line drugs			2 292
Laboratory-confirmed cases		MDR/RR-TB: 3 059, XDR-TB: 99	
Patients started on treatment ^d		MDR/RR-TB: 2 553, XDR-TB: 68	

Treatment success rate and cohort size

	Success	Cohort
New and relapse cases registered in 2014	93%	308 327
Previously treated cases, excluding relapse, registered in 2014	82%	8 005
HIV-positive TB cases, all types, registered in 2014		
MDR/RR-TB cases started on second-line treatment in 2013	69%	1 484
XDR-TB cases started on second-line treatment in 2013	30%	64

TB preventive treatment, 2015

% of HIV-positive people (newly enrolled in care) on preventive treatment	
% of children (aged < 5) household contacts of bacteriologically-confirmed TB cases on preventive treatment	

TB financing, 2016

National TB budget (US\$ millions)	62
Funding source	<1% domestic, 65% international, 35% unfunded

Data are as reported to WHO. Estimates of TB and MDR/RR-TB burden are produced by WHO in consultation with countries. Estimates are rounded and totals are computed prior to rounding.

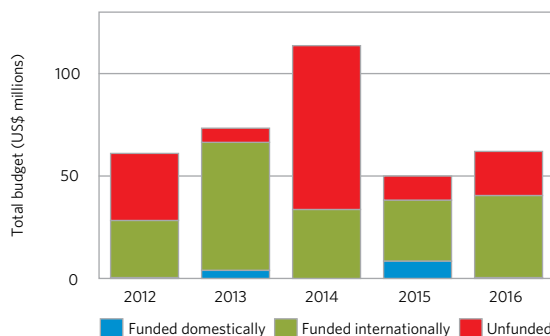
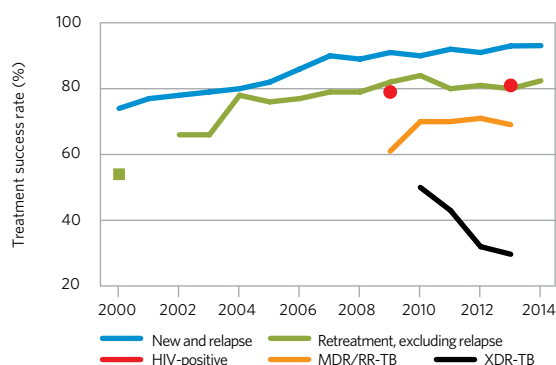
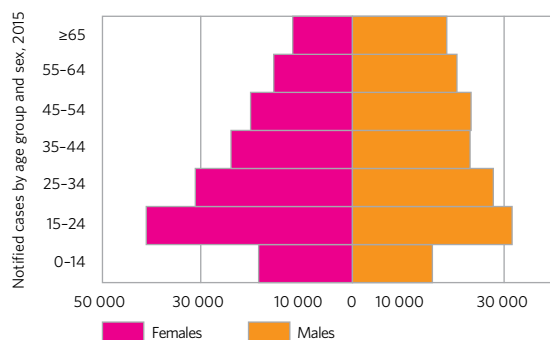
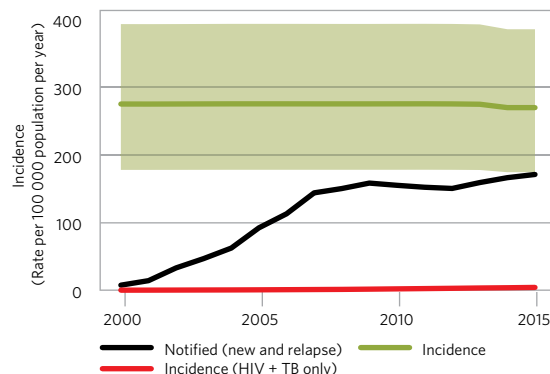
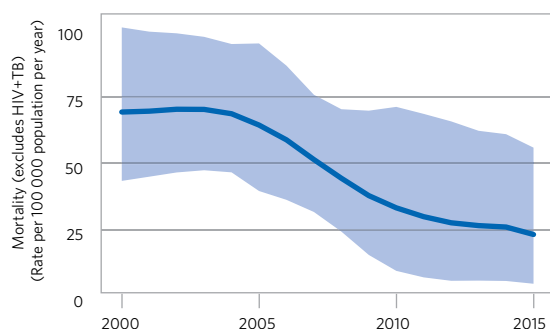
^a Ranges represent uncertainty intervals.

^b MDR is TB resistant to rifampicin and isoniazid; RR is TB resistant to rifampicin.

^c Includes cases with unknown previous TB treatment history.

^d Includes patients diagnosed before 2015 and patients who were not laboratory-confirmed.

population 2015 :: 189 million



Philippines

Estimates of TB burden,^a 2015

	Number (thousands)	Rate (per 100 000 population)
Mortality (excludes HIV+TB)	14 (8.8-19)	13 (8.7-19)
Mortality (HIV+TB only)	0.44 (0.24-0.7)	0.44 (0.24-0.7)
Incidence (includes HIV+TB)	324 (279-373)	322 (277-370)
Incidence (HIV+TB only)	4.3 (3.3-5.4)	4.3 (3.3-5.4)
Incidence (MDR/RR-TB) ^b	17 (14-20)	17 (14-20)

Estimated TB incidence by age and sex (thousands),^a 2015

	0-14 years	> 14 years	Total
Females	14 (6.4-22)	100 (64-135)	114 (71-156)
Males	17 (11-23)	194 (152-236)	211 (163-259)
Total	31 (22-40)	294 (266-322)	324 (279-373)

TB case notifications, 2015

Total cases notified	286 544
Total new and relapse	276 672
— % tested with rapid diagnostics at time of diagnosis	20%
— % with known HIV status	13%
— % pulmonary	97%
— % bacteriologically confirmed among pulmonary	36%

Universal health coverage and social protection

TB treatment coverage (notified/estimated incidence), 2015	85% (74-99)
TB patients facing catastrophic total costs	
TB case fatality ratio (estimated mortality/estimated incidence), 2015	0.04 (0.03-0.06)

TB/HIV care in new and relapse TB patients, 2015

	Number	(%)
Patients with known HIV-status who are HIV-positive	255	<1%
— on antiretroviral therapy	178	70%

Drug-resistant TB care, 2015

	New cases	Previously treated cases	Total number ^c
Estimated MDR/RR-TB cases among notified pulmonary TB cases			15 000 (12 000-18 000)
Estimated % of TB cases with MDR/RR-TB	2.6% (1.8-3.3)	29% (21-38)	
% notified tested for rifampicin resistance	1%	45%	17 351
MDR/RR-TB cases tested for resistance to second-line drugs			414
Laboratory-confirmed cases		MDR/RR-TB: 3 788, XDR-TB: 2	
Patients started on treatment ^d		MDR/RR-TB: 4 142, XDR-TB: 12	

Treatment success rate and cohort size

	Success	Cohort
New and relapse cases registered in 2014	92%	219 737
Previously treated cases, excluding relapse, registered in 2014	83%	6 062
HIV-positive TB cases, all types, registered in 2014	52%	174
MDR/RR-TB cases started on second-line treatment in 2013	49%	1 968
XDR-TB cases started on second-line treatment in 2013	50%	6

TB preventive treatment, 2015

% of HIV-positive people (newly enrolled in care) on preventive treatment	43%
% of children (aged < 5) household contacts of bacteriologically-confirmed TB cases on preventive treatment	14% (13-16)

TB financing, 2016

National TB budget (US\$ millions)	104
Funding source	21% domestic, 41% international, 38% unfunded

Data are as reported to WHO. Estimates of TB and MDR/RR-TB burden are produced by WHO in consultation with countries. Estimates are rounded and totals are computed prior to rounding.

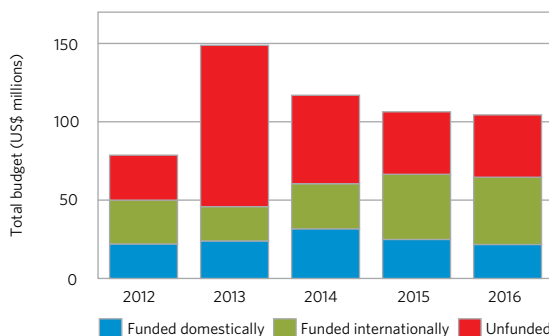
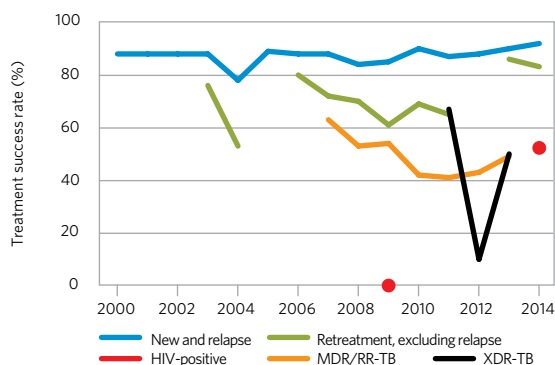
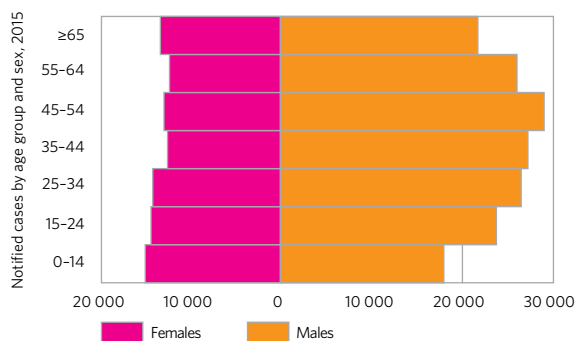
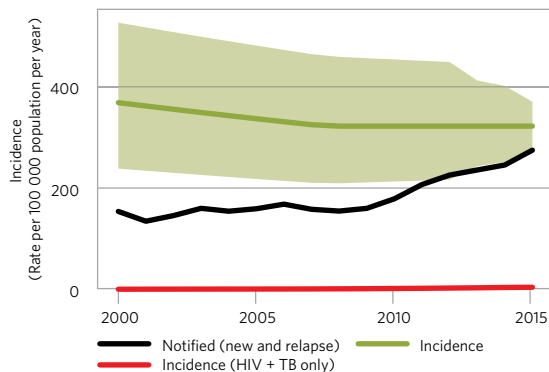
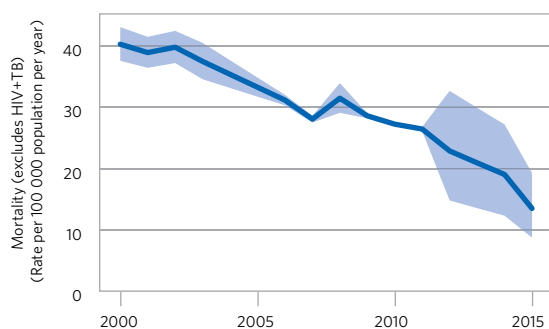
^a Ranges represent uncertainty intervals.

^b MDR is TB resistant to rifampicin and isoniazid; RR is TB resistant to rifampicin.

^c Includes cases with unknown previous TB treatment history.

^d Includes patients diagnosed before 2015 and patients who were not laboratory-confirmed.

population 2015 :: **101 million**



Russian Federation

Estimates of TB burden,^b 2015

	Number (thousands)	Rate (per 100 000 population)
Mortality (excludes HIV+TB)	15 (15-16)	11 (10-11)
Mortality (HIV+TB only)	1.5 (<0.01-7.4)	1 (0-5.2)
Incidence (includes HIV+TB)	115 (98-132)	80 (69-92)
Incidence (HIV+TB only)	11 (9.3-13)	7.9 (6.5-9.4)
Incidence (MDR/RR-TB) ^c	60 (49-71)	42 (34-49)

Estimated TB incidence by age and sex (thousands),^b 2015

	0-14 years	> 14 years	Total
Females	4.6 (2.8-6.4)	31 (19-44)	36 (21-50)
Males	4.4 (3-5.8)	74 (58-90)	79 (61-96)
Total	9 (6.8-11)	106 (96-115)	115 (98-132)

TB case notifications, 2015

Total cases notified	130 904
Total new and relapse	99 590
— % tested with rapid diagnostics at time of diagnosis	
— % with known HIV status ^d	
— % pulmonary	93%
— % bacteriologically confirmed among pulmonary	49%

Universal health coverage and social protection

TB treatment coverage (notified/estimated incidence), 2015	87% (75-100)
TB patients facing catastrophic total costs	
TB case fatality ratio (estimated mortality/estimated incidence), 2015	0.15 (0.11-0.19)

TB/HIV care in new and relapse TB patients, 2015

	Number	(%)
Patients with known HIV-status who are HIV-positive	6 407	
— on antiretroviral therapy		

Drug-resistant TB care, 2015

	New cases	Previously treated cases	Total number ^e
Estimated MDR/RR-TB cases among notified pulmonary TB cases			42 000 (35 000-48 000)
Estimated % of TB cases with MDR/RR-TB	22% (14-25)	53% (40-59)	
% notified tested for rifampicin resistance	38%	31%	46 641
MDR/RR-TB cases tested for resistance to second-line drugs			
Laboratory-confirmed cases		MDR/RR-TB: 17 132, XDR-TB:	
Patients started on treatment ^f		MDR/RR-TB: 26 756, XDR-TB: 1 205	

Treatment success rate and cohort size

	Success	Cohort
New and relapse cases registered in 2014	69%	77 136
Previously treated cases, excluding relapse, registered in 2014	42%	5 790
HIV-positive TB cases, all types, registered in 2014		
MDR/RR-TB cases started on second-line treatment in 2013	48%	18 213
XDR-TB cases started on second-line treatment in 2013	26%	1 965

TB preventive treatment, 2015

% of HIV-positive people (newly enrolled in care) on preventive treatment	
% of children (aged < 5) household contacts of bacteriologically-confirmed TB cases on preventive treatment	

TB financing,^g 2016

National TB budget (US\$ millions)	1 385
Funding source	100% domestic, 0% international, 0% unfunded

Data are as reported to WHO. Estimates of TB and MDR/RR-TB burden are produced by WHO in consultation with countries. Estimates are rounded and totals are computed prior to rounding.

^a UN Population Division estimates are lower than the population registered by the Federal State Statistics Service of the Russian Federation.

^b Ranges represent uncertainty intervals.

^c MDR is TB resistant to rifampicin and isoniazid; RR is TB resistant to rifampicin.

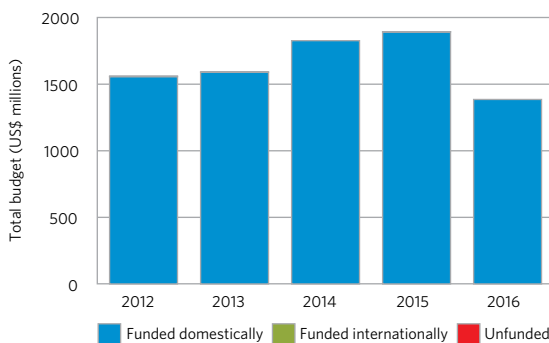
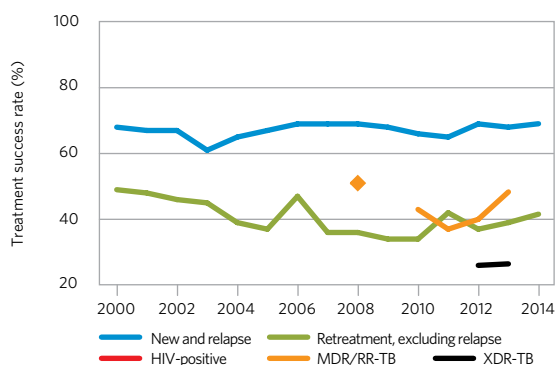
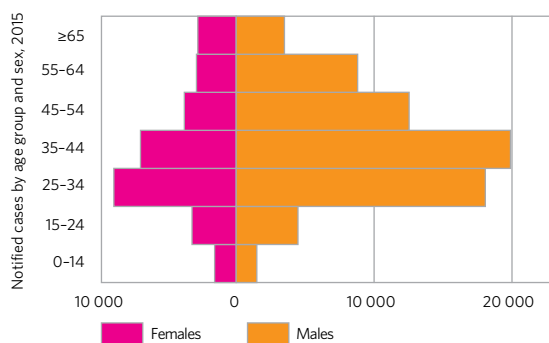
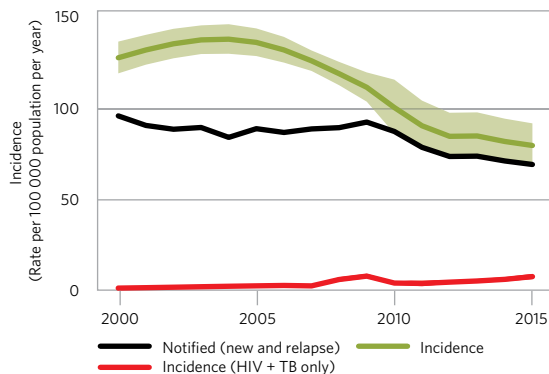
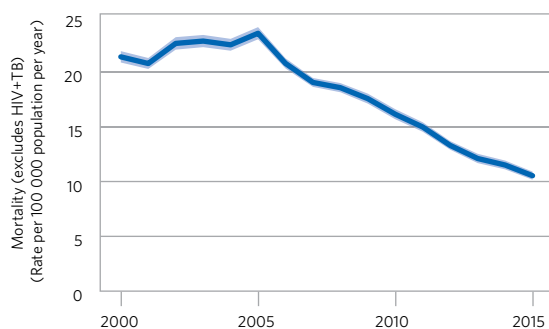
^d The reported number of TB patients with known HIV status is for new TB patients in the civilian sector only. It was not possible to calculate the percentage of all TB patients with known HIV status.

^e Includes cases with unknown previous TB treatment history.

^f Includes patients diagnosed before 2015 and patients who were not laboratory-confirmed.

^g The decline in financing between 2015 and 2016 in terms of US dollars reflects a change in the US Dollar-Rouble exchange rate. However, the domestic price regulation system ensures that the level and quality of TB care is maintained.

population 2015^a :: **143 million**



South Africa

Estimates of TB burden,^a 2015

	Number (thousands)	Rate (per 100 000 population)
Mortality (excludes HIV+TB)	25 (21-29)	46 (39-53)
Mortality (HIV+TB only)	73 (27-140)	133 (50-256)
Incidence (includes HIV+TB)	454 (294-649)	834 (539-1 190)
Incidence (HIV+TB only)	258 (165-370)	473 (303-680)
Incidence (MDR/RR-TB) ^b	20 (13-27)	37 (24-50)

Estimated TB incidence by age and sex (thousands),^a 2015

	0-14 years	> 14 years	Total
Females	16 (6.9-25)	175 (91-260)	191 (98-285)
Males	17 (9.8-23)	246 (173-320)	263 (182-343)
Total	33 (21-44)	422 (327-516)	454 (294-649)

TB case notifications, 2015

Total cases notified	294 603
Total new and relapse	287 224
— % tested with rapid diagnostics at time of diagnosis	64%
— % with known HIV status	97%
— % pulmonary	90%
— % bacteriologically confirmed among pulmonary	60%

Universal health coverage and social protection

TB treatment coverage (notified/estimated incidence), 2015	63% (44-98)
TB patients facing catastrophic total costs	
TB case fatality ratio (estimated mortality/estimated incidence), 2015	0.22 (0.1-0.42)

TB/HIV care in new and relapse TB patients, 2015

	Number	(%)
Patients with known HIV-status who are HIV-positive	157 505	57%
— on antiretroviral therapy	133 116	85%

Drug-resistant TB care, 2015

	New cases	Previously treated cases	Total number ^c
Estimated MDR/RR-TB cases among notified pulmonary TB cases			10 000 (8 200-12 000)
Estimated % of TB cases with MDR/RR-TB	3.5% (2.8-4.2)	7.1% (5.3-8.9)	
% notified tested for rifampicin resistance	65%	71%	196 783
MDR/RR-TB cases tested for resistance to second-line drugs			7 402
Laboratory-confirmed cases		MDR/RR-TB: 19 613, XDR-TB: 1 024	
Patients started on treatment ^d		MDR/RR-TB: 12 527, XDR-TB: 730	

Treatment success rate and cohort size

	Success	Cohort
New and relapse cases registered in 2014	78%	319 752
Previously treated cases, excluding relapse, registered in 2014	63%	4 652
HIV-positive TB cases, all types, registered in 2014	76%	183 697
MDR/RR-TB cases started on second-line treatment in 2013	48%	10 614
XDR-TB cases started on second-line treatment in 2013	24%	611

TB preventive treatment, 2015

% of HIV-positive people (newly enrolled in care) on preventive treatment	38%
% of children (aged < 5) household contacts of bacteriologically-confirmed TB cases on preventive treatment	

TB financing, 2016

National TB budget (US\$ millions)	425
Funding source	87% domestic, 8% international, 5% unfunded

Data are as reported to WHO. Estimates of TB and MDR/RR-TB burden are produced by WHO in consultation with countries. Estimates are rounded and totals are computed prior to rounding.

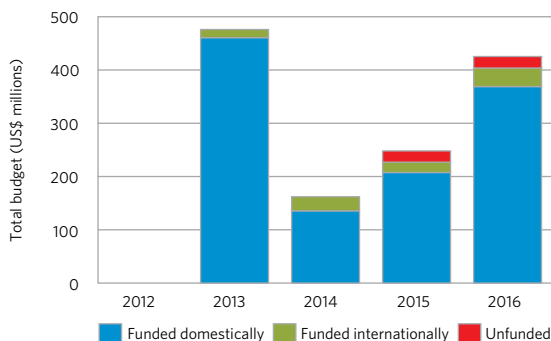
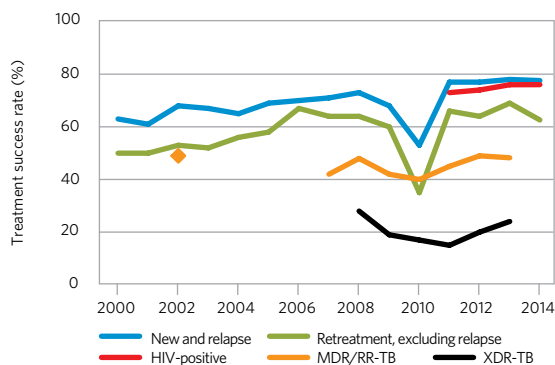
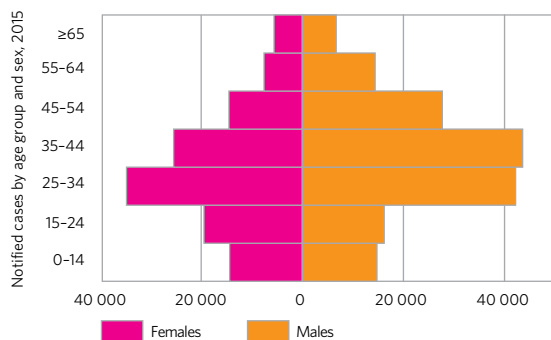
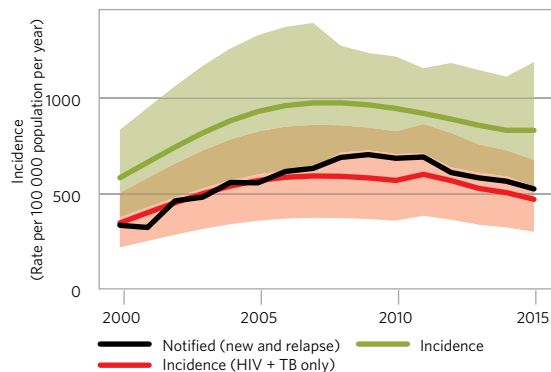
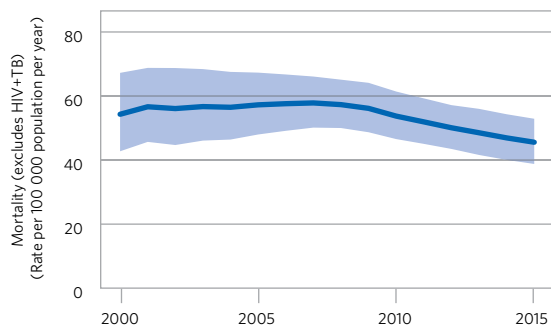
^a Ranges represent uncertainty intervals.

^b MDR is TB resistant to rifampicin and isoniazid; RR is TB resistant to rifampicin.

^c Includes cases with unknown previous TB treatment history.

^d Includes patients diagnosed before 2015 and patients who were not laboratory-confirmed.

population 2015 :: **54 million**



Thailand

population 2015 :: 68 million

Estimates of TB burden,^a 2015

	Number (thousands)	Rate (per 100 000 population)
Mortality (excludes HIV+TB)	8.4 (6.9-10)	12 (10-15)
Mortality (HIV+TB only)	5.4 (3.3-8.1)	8 (4.9-12)
Incidence (includes HIV+TB)	117 (69-176)	172 (102-259)
Incidence (HIV+TB only)	15 (8-25)	22 (12-37)
Incidence (MDR/RR-TB) ^b	4.5 (2.9-6.2)	6.6 (4.3-9.1)

Estimated TB incidence by age and sex (thousands),^a 2015

	0-14 years	> 14 years	Total
Females	3.9 (2.1-5.6)	32 (5.2-58)	36 (7.3-64)
Males	2.7 (1.6-3.9)	78 (53-103)	81 (55-107)
Total	6.6 (4.1-9)	110 (82-138)	117 (69-176)

TB case notifications, 2015

Total cases notified	66 179
Total new and relapse	62 135
— % tested with rapid diagnostics at time of diagnosis	
— % with known HIV status	98%
— % pulmonary	84%
— % bacteriologically confirmed among pulmonary	64%

Universal health coverage and social protection

TB treatment coverage (notified/estimated incidence), 2015	53% (35-89)
TB patients facing catastrophic total costs	
TB case fatality ratio (estimated mortality/estimated incidence), 2015	0.12 (0.07-0.21)

TB/HIV care in new and relapse TB patients, 2015

	Number	(%)
Patients with known HIV-status who are HIV-positive	7 819	13%
— on antiretroviral therapy	5 389	69%

Drug-resistant TB care, 2015

	New cases	Previously treated cases	Total number ^c
Estimated MDR/RR-TB cases among notified pulmonary TB cases			2 500 (2 000-3 000)
Estimated % of TB cases with MDR/RR-TB	2.2% (1.5-2.9)	24% (18-30)	
% notified tested for rifampicin resistance	10%	30%	7 970
MDR/RR-TB cases tested for resistance to second-line drugs			
Laboratory-confirmed cases		MDR/RR-TB: 466, XDR-TB: 5	
Patients started on treatment ^d		MDR/RR-TB: 506, XDR-TB: 5	

Treatment success rate and cohort size

	Success	Cohort
New and relapse cases registered in 2014	80%	58 774
Previously treated cases, excluding relapse, registered in 2014	63%	1 433
HIV-positive TB cases, all types, registered in 2014	67%	6 451
MDR/RR-TB cases started on second-line treatment in 2013		
XDR-TB cases started on second-line treatment in 2013		

TB preventive treatment, 2015

% of HIV-positive people (newly enrolled in care) on preventive treatment	
% of children (aged < 5) household contacts of bacteriologically-confirmed TB cases on preventive treatment	

TB financing, 2016

National TB budget (US\$ millions)	31
Funding source	36% domestic, 10% international, 54% unfunded

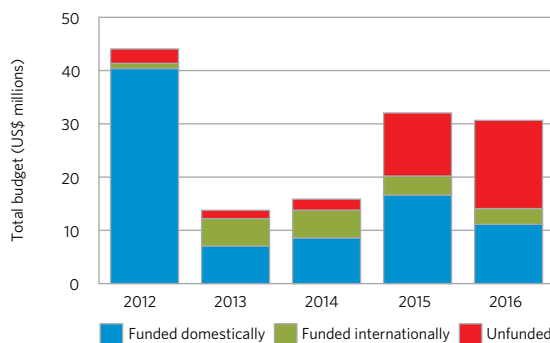
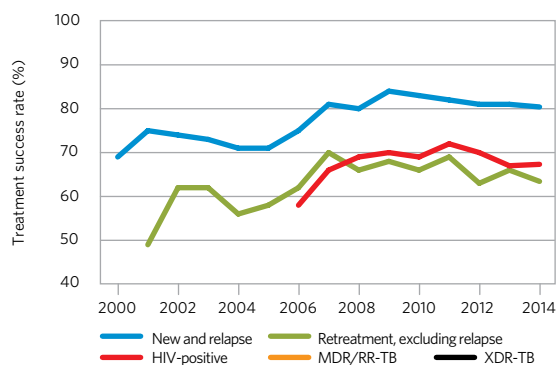
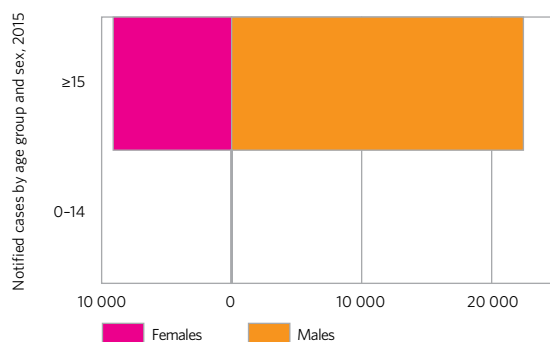
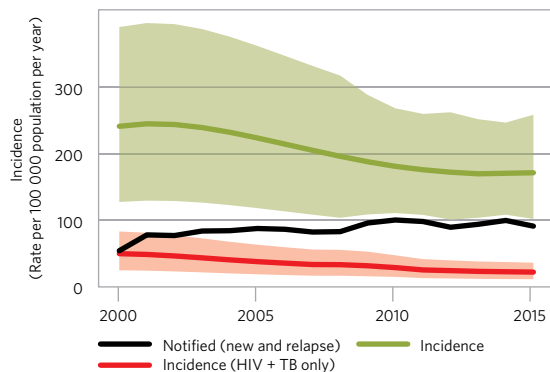
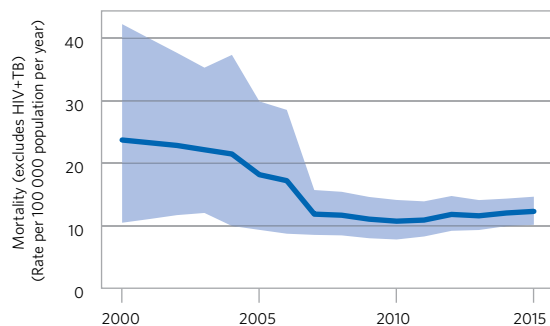
Data are as reported to WHO. Estimates of TB and MDR/RR-TB burden are produced by WHO in consultation with countries. Estimates are rounded and totals are computed prior to rounding.

^a Ranges represent uncertainty intervals.

^b MDR is TB resistant to rifampicin and isoniazid; RR is TB resistant to rifampicin.

^c Includes cases with unknown previous TB treatment history.

^d Includes patients diagnosed before 2015 and patients who were not laboratory-confirmed.



United Republic of Tanzania

population 2015 :: **53 million**

Estimates of TB burden,^a 2015

	Number (thousands)	Rate (per 100 000 population)
Mortality (excludes HIV+TB)	30 (13-53)	56 (25-99)
Mortality (HIV+TB only)	25 (16-35)	47 (31-66)
Incidence (includes HIV+TB)	164 (78-281)	306 (146-525)
Incidence (HIV+TB only)	57 (27-100)	107 (50-186)
Incidence (MDR/RR-TB) ^b	2.6 (0.56-4.7)	4.9 (1-8.8)

Estimated TB incidence by age and sex (thousands),^a 2015

	0-14 years	> 14 years	Total
Females	8.4 (2.9-14)	56 (9.2-102)	64 (12-116)
Males	9.5 (5.4-14)	90 (52-129)	100 (57-142)
Total	18 (11-25)	146 (91-201)	164 (78-281)

TB case notifications, 2015

Total cases notified	62 180
Total new and relapse	60 895
— % tested with rapid diagnostics at time of diagnosis	
— % with known HIV status	93%
— % pulmonary	79%
— % bacteriologically confirmed among pulmonary	53%

Universal health coverage and social protection

TB treatment coverage (notified/estimated incidence), 2015	37% (22-78)
TB patients facing catastrophic total costs	
TB case fatality ratio (estimated mortality/estimated incidence), 2015	0.37 (0.17-0.76)

TB/HIV care in new and relapse TB patients, 2015

	Number	(%)
Patients with known HIV-status who are HIV-positive	20 117	36%
— on antiretroviral therapy	17 063	85%

Drug-resistant TB care, 2015

	New cases	Previously treated cases	Total number ^c
Estimated MDR/RR-TB cases among notified pulmonary TB cases			730 (320-1100)
Estimated % of TB cases with MDR/RR-TB	1.3% (0.47-2.1)	4.7% (0.37-9)	
% notified tested for rifampicin resistance	<1%	3%	692
MDR/RR-TB cases tested for resistance to second-line drugs			
Laboratory-confirmed cases		MDR/RR-TB: 178, XDR-TB: 0	
Patients started on treatment ^d		MDR/RR-TB: 123, XDR-TB: 0	

Treatment success rate and cohort size

	Success	Cohort
New and relapse cases registered in 2014	90%	61 573
Previously treated cases, excluding relapse, registered in 2014	81%	1 578
HIV-positive TB cases, all types, registered in 2014	87%	20 658
MDR/RR-TB cases started on second-line treatment in 2013	68%	92
XDR-TB cases started on second-line treatment in 2013		0

TB preventive treatment, 2015

% of HIV-positive people (newly enrolled in care) on preventive treatment	
% of children (aged < 5) household contacts of bacteriologically-confirmed TB cases on preventive treatment	6.9% (6.3-7.6)

TB financing, 2016

National TB budget (US\$ millions)	40
Funding source	5% domestic, 40% international, 55% unfunded

Data are as reported to WHO. Estimates of TB and MDR/RR-TB burden are produced by WHO in consultation with countries. Estimates are rounded and totals are computed prior to rounding.

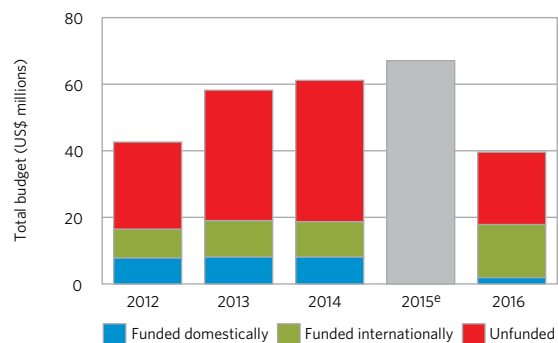
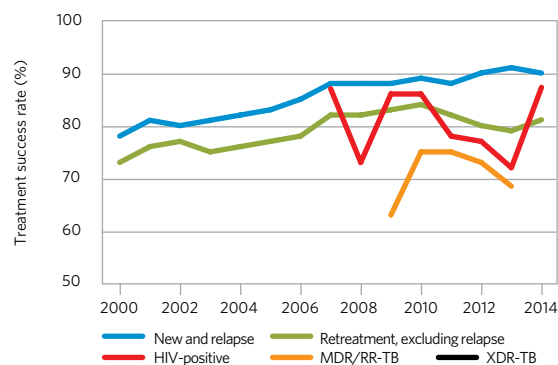
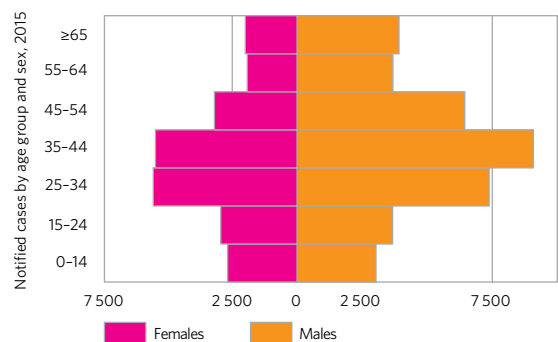
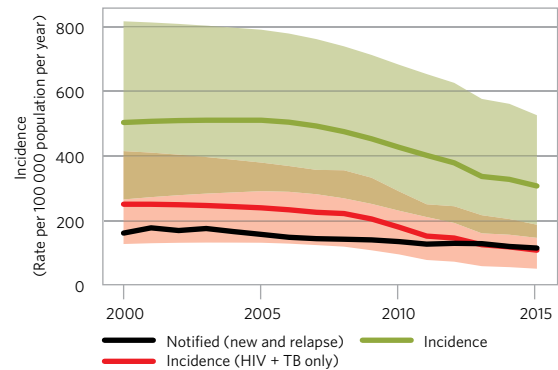
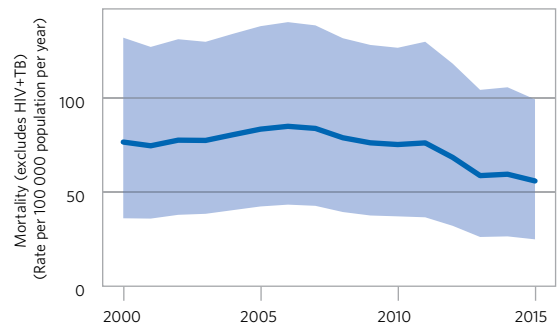
^a Ranges represent uncertainty intervals. The main direct measurement of TB disease burden is the 2012 national TB prevalence survey. Laboratory challenges during the survey meant that the prevalence of bacteriologically confirmed pulmonary TB could only be estimated with considerable uncertainty. This explains why estimates of TB incidence and mortality, which are informed by the prevalence survey, also have wide uncertainty intervals. A review of estimates of TB disease burden and how to improve their precision will be undertaken in early 2017.

^b MDR is TB resistant to rifampicin and isoniazid; RR is TB resistant to rifampicin.

^c Includes cases with unknown previous TB treatment history.

^d Includes patients diagnosed before 2015 and patients who were not laboratory-confirmed.

^e Funding sources for 2015 were not reported.



Viet Nam

population 2015 :: 93 million

Estimates of TB burden,^a 2015

	Number (thousands)	Rate (per 100 000 population)
Mortality (excludes HIV+TB)	16 (11-22)	17 (12-23)
Mortality (HIV+TB only)	1.1 (0.2-2.7)	1.1 (0.21-2.8)
Incidence (includes HIV+TB)	128 (103-155)	137 (110-166)
Incidence (HIV+TB only)	5.5 (3.5-7.9)	5.9 (3.8-8.4)
Incidence (MDR/RR-TB) ^b	7.3 (5.2-9.5)	7.8 (5.6-10)

Estimated TB incidence by age and sex (thousands),^a 2015

	0-14 years	> 14 years	Total
Females	5.5 (2.6-8.3)	28 (10-46)	34 (13-54)
Males	5.8 (3.6-8)	88 (67-109)	94 (71-117)
Total	11 (7.7-15)	116 (101-131)	128 (103-155)

TB case notifications, 2015

Total cases notified	102 676
Total new and relapse	100 780
— % tested with rapid diagnostics at time of diagnosis	11%
— % with known HIV status	79%
— % pulmonary	82%
— % bacteriologically confirmed among pulmonary	69%

Universal health coverage and social protection

TB treatment coverage (notified/estimated incidence), 2015	79% (65-98)
TB patients facing catastrophic total costs	
TB case fatality ratio (estimated mortality/estimated incidence), 2015	0.14 (0.09-0.19)

TB/HIV care in new and relapse TB patients, 2015

	Number	(%)
Patients with known HIV-status who are HIV-positive	3 428	4%
— on antiretroviral therapy	3 065	89%

Drug-resistant TB care, 2015

	New cases	Previously treated cases	Total number ^c
Estimated MDR/RR-TB cases among notified pulmonary TB cases			5 200 (4 100-6 300)
Estimated % of TB cases with MDR/RR-TB	4.1% (2.6-5.5)	25% (24-26)	
% notified tested for rifampicin resistance	8%	100%	15 841
MDR/RR-TB cases tested for resistance to second-line drugs			150
Laboratory-confirmed cases		MDR/RR-TB: 2 602, XDR-TB: 28	
Patients started on treatment ^d		MDR/RR-TB: 2 131, XDR-TB: 3	

Treatment success rate and cohort size

	Success	Cohort
New and relapse cases registered in 2014	91%	100 349
Previously treated cases, excluding relapse, registered in 2014	76%	1 738
HIV-positive TB cases, all types, registered in 2014	75%	1 519
MDR/RR-TB cases started on second-line treatment in 2013	69%	959
XDR-TB cases started on second-line treatment in 2013		

TB preventive treatment, 2015

% of HIV-positive people (newly enrolled in care) on preventive treatment	
% of children (aged < 5) household contacts of bacteriologically-confirmed TB cases on preventive treatment	11% (10-12)

TB financing, 2016

National TB budget (US\$ millions)	71
Funding source	9% domestic, 22% international, 69% unfunded

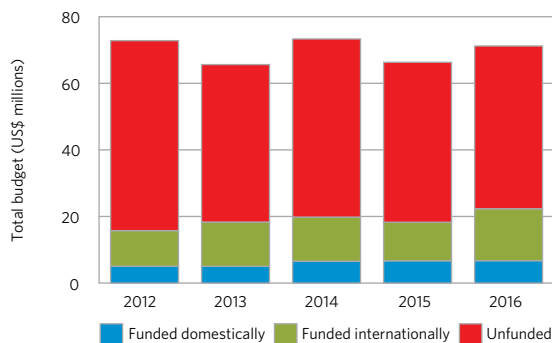
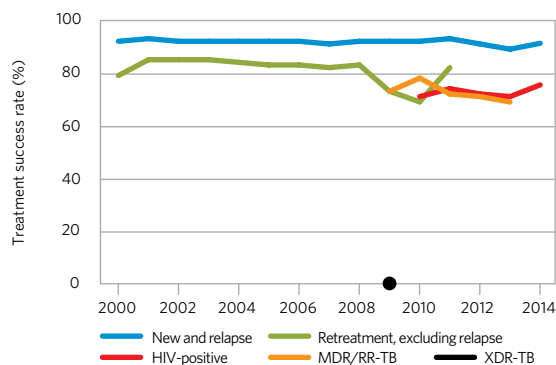
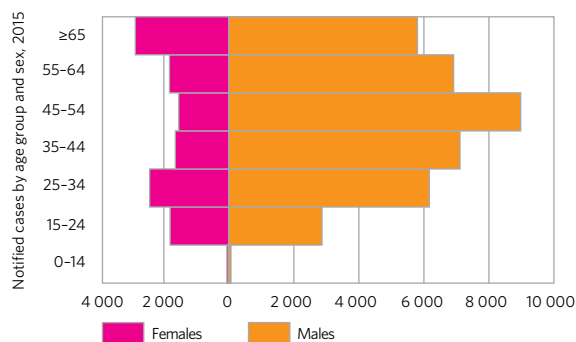
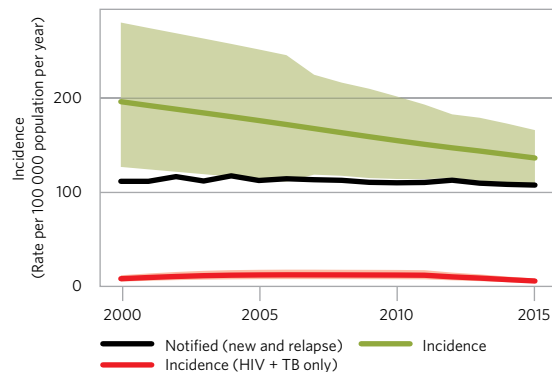
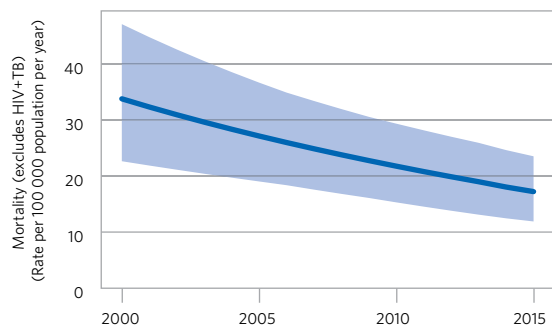
Data are as reported to WHO. Estimates of TB and MDR/RR-TB burden are produced by WHO in consultation with countries. Estimates are rounded and totals are computed prior to rounding.

^a Ranges represent uncertainty intervals.

^b MDR is TB resistant to rifampicin and isoniazid; RR is TB resistant to rifampicin.

^c Includes cases with unknown previous TB treatment history.

^d Includes patients diagnosed before 2015 and patients who were not laboratory-confirmed.



Cambodia

population 2015 :: **16 million**

Estimates of TB burden,^a 2015

	Number (thousands)	Rate (per 100 000 population)
Mortality (excludes HIV+TB)	8.6 (6.1-12)	55 (39-74)
Mortality (HIV+TB only)	0.44 (0.19-0.79)	2.8 (1.2-5)
Incidence (includes HIV+TB)	59 (38-85)	380 (246-543)
Incidence (HIV+TB only)	1.4 (0.92-2.1)	9.2 (5.9-13)
Incidence (MDR/RR-TB) ^b	1.3 (0.59-2.1)	8.3 (3.8-13)

Estimated TB incidence by age and sex (thousands),^a 2015

	0-14 years	> 14 years	Total
Females	2.6 (0.9-4.4)	26 (15-36)	28 (16-41)
Males	3.5 (2.1-4.9)	27 (19-36)	31 (21-41)
Total	6.1 (4-8.2)	53 (40-66)	59 (38-85)

TB case notifications, 2015

Total cases notified	35 638
Total new and relapse	35 169
— % tested with rapid diagnostics at time of diagnosis	
— % with known HIV status	84%
— % pulmonary	63%
— % bacteriologically confirmed among pulmonary	48%

Universal health coverage and social protection

TB treatment coverage (notified/estimated incidence), 2015	59% (42-92)
TB patients facing catastrophic total costs	
TB case fatality ratio (estimated mortality/estimated incidence), 2015	0.16 (0.09-0.26)

TB/HIV care in new and relapse TB patients, 2015

	Number	(%)
Patients with known HIV-status who are HIV-positive	740	3%
— on antiretroviral therapy	680	92%

Drug-resistant TB care, 2015

	New cases	Previously treated cases	Total number ^c
Estimated MDR/RR-TB cases among notified pulmonary TB cases			570 (290-840)
Estimated % of TB cases with MDR/RR-TB	1.8% (0.77-2.8)	11% (1.4-20)	
% notified tested for rifampicin resistance	<1%	80%	1 797
MDR/RR-TB cases tested for resistance to second-line drugs			0
Laboratory-confirmed cases		MDR/RR-TB: 77, XDR-TB: 0	
Patients started on treatment ^d		MDR/RR-TB: 75, XDR-TB: 0	

Treatment success rate and cohort size

	Success	Cohort
New and relapse cases registered in 2014	93%	43 139
Previously treated cases, excluding relapse, registered in 2014		
HIV-positive TB cases, all types, registered in 2014		
MDR/RR-TB cases started on second-line treatment in 2013	75%	121
XDR-TB cases started on second-line treatment in 2013		

TB preventive treatment, 2015

% of HIV-positive people (newly enrolled in care) on preventive treatment	25%
% of children (aged < 5) household contacts of bacteriologically-confirmed TB cases on preventive treatment	14% (13-16)

TB financing, 2016

National TB budget (US\$ millions)	29
Funding source	8% domestic, 37% international, 55% unfunded

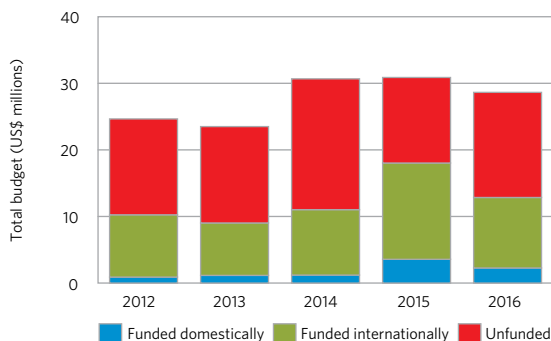
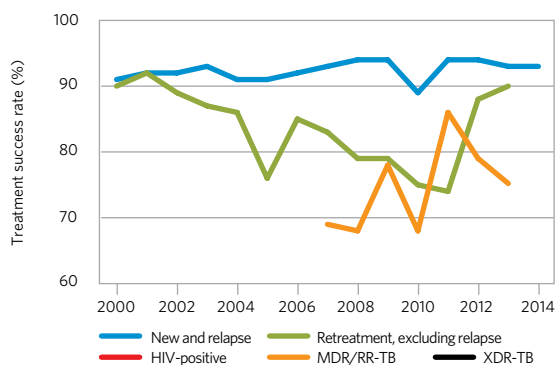
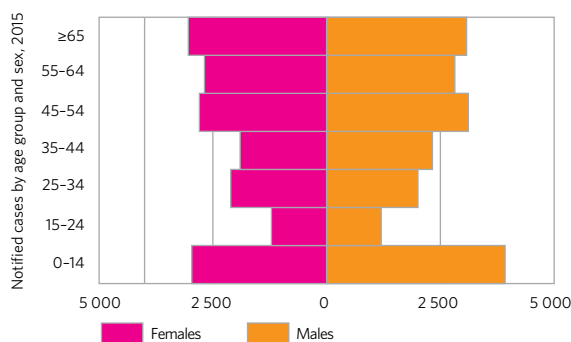
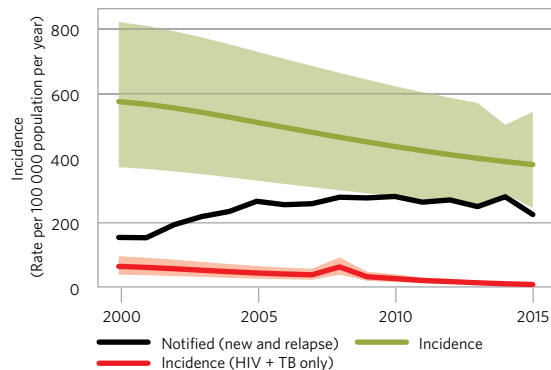
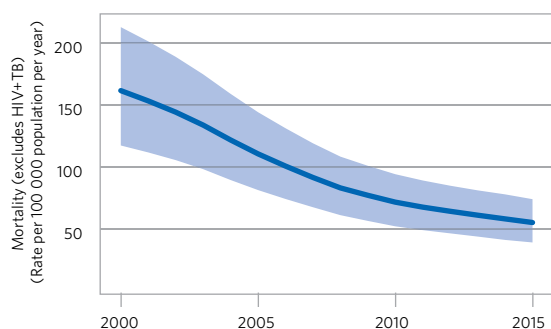
Data are as reported to WHO. Estimates of TB and MDR/RR-TB burden are produced by WHO in consultation with countries. Estimates are rounded and totals are computed prior to rounding.

^a Ranges represent uncertainty intervals.

^b MDR is TB resistant to rifampicin and isoniazid; RR is TB resistant to rifampicin.

^c Includes cases with unknown previous TB treatment history.

^d Includes patients diagnosed before 2015 and patients who were not laboratory-confirmed.



Central African Republic

population 2015 :: **4.9 million**

Estimates of TB burden,^a 2015

	Number (thousands)	Rate (per 100 000 population)
Mortality (excludes HIV+TB)	2.2 (1.3-3.4)	45 (26-70)
Mortality (HIV+TB only)	2.7 (1-5.3)	55 (20-107)
Incidence (includes HIV+TB)	19 (12-27)	391 (253-558)
Incidence (HIV+TB only)	8.6 (5.3-13)	176 (107-262)
Incidence (MDR/RR-TB) ^b	0.21 (0-0.45)	4.3 (0-9.2)

Estimated TB incidence by age and sex (thousands),^a 2015

	0-14 years	> 14 years	Total
Females	1.3 (0.63-1.9)	7.2 (3.6-11)	8.4 (4.2-13)
Males	1 (0.59-1.4)	9.7 (6.6-13)	11 (7.2-14)
Total	2.3 (1.4-3.1)	17 (13-21)	19 (12-27)

TB case notifications, 2015

Total cases notified	10 799
Total new and relapse	10 459
— % tested with rapid diagnostics at time of diagnosis	1%
— % with known HIV status	48%
— % pulmonary	82%
— % bacteriologically confirmed among pulmonary	61%

Universal health coverage and social protection

TB treatment coverage (notified/estimated incidence), 2015	55% (38-84)
TB patients facing catastrophic total costs	
TB case fatality ratio (estimated mortality/estimated incidence), 2015	0.27 (0.13-0.48)

TB/HIV care in new and relapse TB patients, 2015

	Number	(%)
Patients with known HIV-status who are HIV-positive	1 963	39%
— on antiretroviral therapy		

Drug-resistant TB care, 2015

	New cases	Previously treated cases	Total number ^c
Estimated MDR/RR-TB cases among notified pulmonary TB cases			140 (23-250)
Estimated % of TB cases with MDR/RR-TB	0.4% (0-1.6)	14% (6.9-21)	
% notified tested for rifampicin resistance	<1%	14%	105
MDR/RR-TB cases tested for resistance to second-line drugs			38
Laboratory-confirmed cases		MDR/RR-TB: 62, XDR-TB: 2	
Patients started on treatment ^d		MDR/RR-TB: 38, XDR-TB: 0	

Treatment success rate and cohort size

	Success	Cohort
New cases registered in 2014	70%	9 209
Previously treated cases registered in 2014	64%	476
HIV-positive TB cases, all types, registered in 2014	68%	2 056
MDR/RR-TB cases started on second-line treatment in 2013	81%	16
XDR-TB cases started on second-line treatment in 2013		0

TB preventive treatment, 2015

% of HIV-positive people (newly enrolled in care) on preventive treatment	
% of children (aged < 5) household contacts of bacteriologically-confirmed TB cases on preventive treatment	

TB financing, 2016

National TB budget (US\$ millions)	1.8
Funding source	15% domestic, 55% international, 31% unfunded

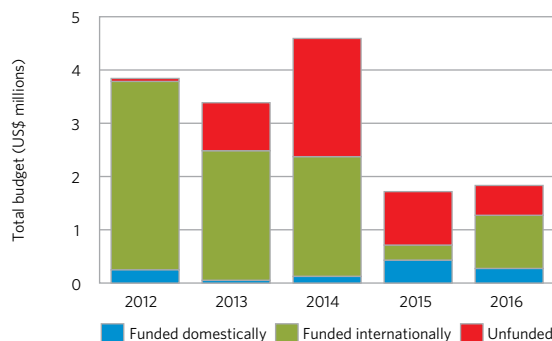
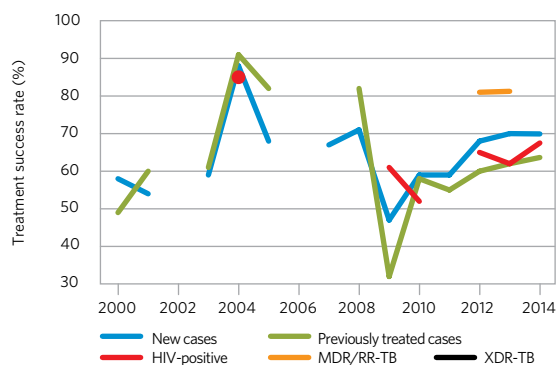
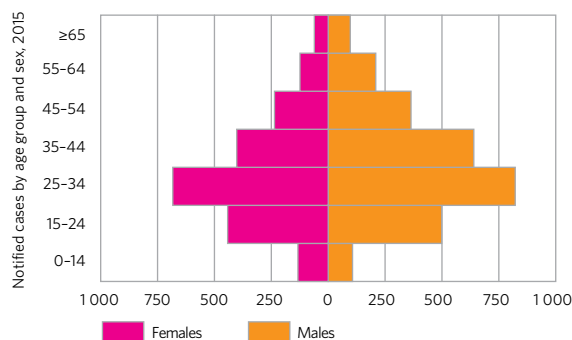
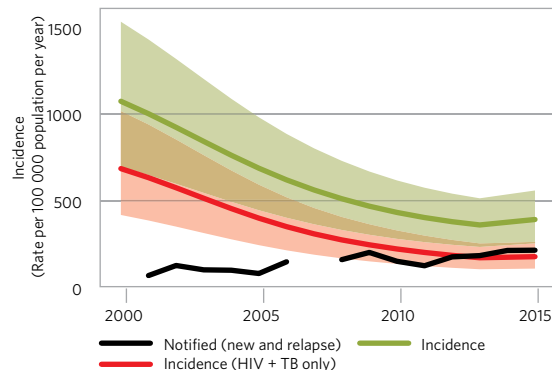
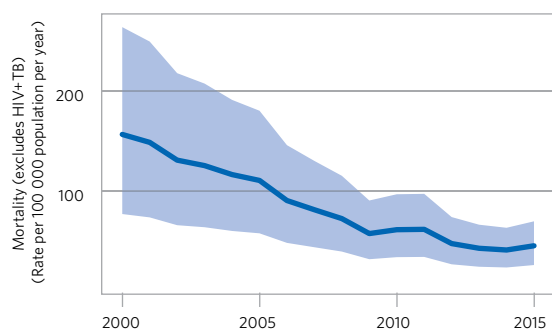
Data are as reported to WHO. Estimates of TB and MDR/RR-TB burden are produced by WHO in consultation with countries. Estimates are rounded and totals are computed prior to rounding.

^a Ranges represent uncertainty intervals.

^b MDR is TB resistant to rifampicin and isoniazid; RR is TB resistant to rifampicin.

^c Includes cases with unknown previous TB treatment history.

^d Includes patients diagnosed before 2015 and patients who were not laboratory-confirmed.



Congo

Estimates of TB burden,^a 2015

	Number (thousands)	Rate (per 100 000 population)
Mortality (excludes HIV+TB)	2.3 (1.3-3.5)	49 (29-75)
Mortality (HIV+TB only)	2.4 (2-2.9)	53 (44-63)
Incidence (includes HIV+TB)	18 (11-25)	379 (246-542)
Incidence (HIV+TB only)	6.4 (3.9-9.5)	138 (84-205)
Incidence (MDR/RR-TB) ^b	0.67 (0.29-1)	15 (6.3-22)

Estimated TB incidence by age and sex (thousands),^a 2015

	0-14 years	> 14 years	Total
Females	1 (0.5-1.5)	6.9 (3.6-10)	7.9 (4.1-12)
Males	0.92 (0.55-1.3)	8.7 (6-11)	9.6 (6.5-13)
Total	1.9 (1.3-2.6)	16 (12-19)	18 (11-25)

TB case notifications, 2015

Total cases notified	10 119
Total new and relapse	9 937
— % tested with rapid diagnostics at time of diagnosis	3%
— % with known HIV status	13%
— % pulmonary	75%
— % bacteriologically confirmed among pulmonary	51%

Universal health coverage and social protection

TB treatment coverage (notified/estimated incidence), 2015	57% (40-88)
TB patients facing catastrophic total costs	
TB case fatality ratio (estimated mortality/estimated incidence), 2015	0.28 (0.17-0.44)

TB/HIV care in new and relapse TB patients, 2015

	Number	(%)
Patients with known HIV-status who are HIV-positive	479	38%
— on antiretroviral therapy	164	34%

Drug-resistant TB care, 2015

	New cases	Previously treated cases	Total number ^c
Estimated MDR/RR-TB cases among notified pulmonary TB cases			300 (160-430)
Estimated % of TB cases with MDR/RR-TB	3.2% (1.4-5)	14% (6.9-21)	
% notified tested for rifampicin resistance			9 469
MDR/RR-TB cases tested for resistance to second-line drugs			5
Laboratory-confirmed cases			MDR/RR-TB: 41, XDR-TB: 0
Patients started on treatment ^d			MDR/RR-TB: 13, XDR-TB: 0

Treatment success rate and cohort size

	Success	Cohort
New and relapse cases registered in 2014	69%	4 108
Previously treated cases, excluding relapse, registered in 2014	94%	182
HIV-positive TB cases, all types, registered in 2014		
MDR/RR-TB cases started on second-line treatment in 2013		
XDR-TB cases started on second-line treatment in 2013		

TB preventive treatment, 2015

% of HIV-positive people (newly enrolled in care) on preventive treatment	
% of children (aged < 5) household contacts of bacteriologically-confirmed TB cases on preventive treatment	

TB financing, 2016

National TB budget (US\$ millions)	3.8
Funding source	12% domestic, 68% international, 20% unfunded

Data are as reported to WHO. Estimates of TB and MDR/RR-TB burden are produced by WHO in consultation with countries. Estimates are rounded and totals are computed prior to rounding.

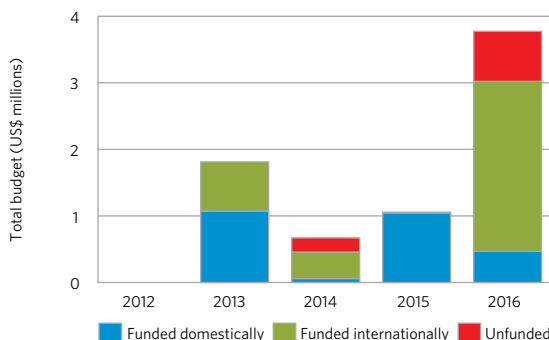
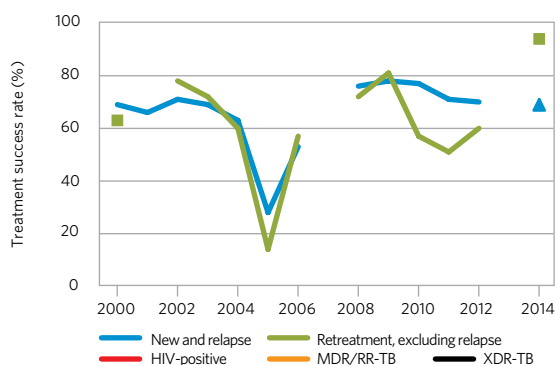
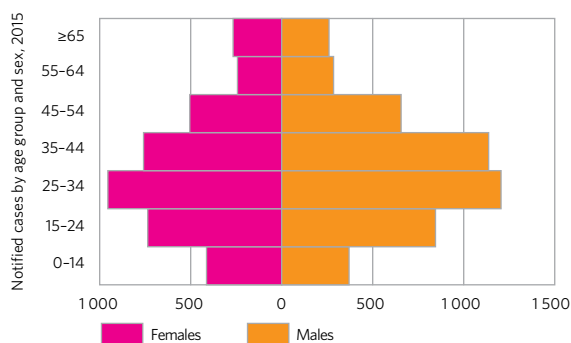
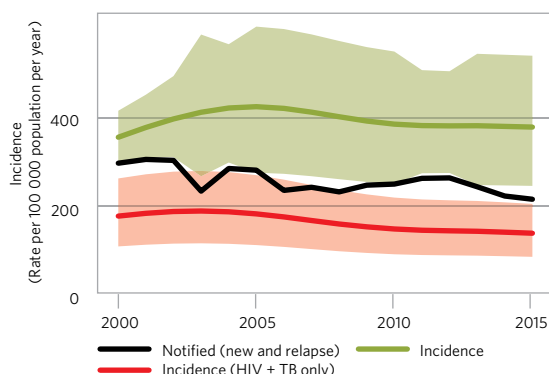
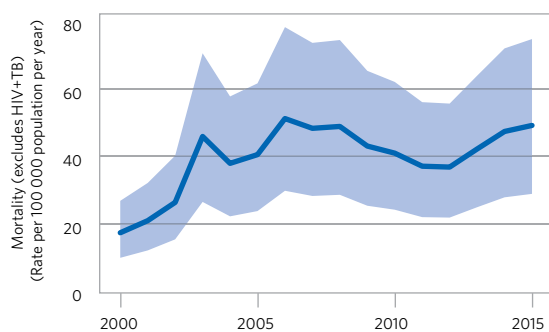
^a Ranges represent uncertainty intervals.

^b MDR is TB resistant to rifampicin and isoniazid; RR is TB resistant to rifampicin.

^c Includes cases with unknown previous TB treatment history.

^d Includes patients diagnosed before 2015 and patients who were not laboratory-confirmed.

population 2015 :: **4.6 million**



Lesotho

population 2015 :: **2.1 million**

Estimates of TB burden,^a 2015

	Number (thousands)	Rate (per 100 000 population)
Mortality (excludes HIV+TB)	1.2 (0.63-1.9)	55 (29-89)
Mortality (HIV+TB only)	4.8 (3-7)	223 (139-328)
Incidence (includes HIV+TB)	17 (11-24)	788 (510-1125)
Incidence (HIV+TB only)	12 (7.7-18)	566 (359-820)
Incidence (MDR/RR-TB) ^b	1.1 (0.76-1.5)	52 (36-70)

Estimated TB incidence by age and sex (thousands),^a 2015

	0-14 years	> 14 years	Total
Females	0.54 (0.18-0.9)	5.9 (2.7-9.1)	6.5 (2.9-10)
Males	0.63 (0.36-0.9)	9.7 (6.8-13)	10 (7.2-14)
Total	1.2 (0.72-1.6)	16 (12-19)	17 (11-24)

TB case notifications, 2015

Total cases notified	7 892
Total new and relapse	7 594
— % tested with rapid diagnostics at time of diagnosis	
— % with known HIV status	96%
— % pulmonary	86%
— % bacteriologically confirmed among pulmonary	49%

Universal health coverage and social protection

TB treatment coverage (notified/estimated incidence), 2015	45% (32-70)
TB patients facing catastrophic total costs	
TB case fatality ratio (estimated mortality/estimated incidence), 2015	0.37 (0.21-0.61)

TB/HIV care in new and relapse TB patients, 2015

	Number	(%)
Patients with known HIV-status who are HIV-positive	5 258	72%
— on antiretroviral therapy	4 152	79%

Drug-resistant TB care, 2015

	New cases	Previously treated cases	Total number ^c
Estimated MDR/RR-TB cases among notified pulmonary TB cases			430 (350-510)
Estimated % of TB cases with MDR/RR-TB	4.8% (3.7-5.9)	14% (9.3-18)	
% notified tested for rifampicin resistance	21%	57%	2 536
MDR/RR-TB cases tested for resistance to second-line drugs			8
Laboratory-confirmed cases			MDR/RR-TB: 332, XDR-TB: 5
Patients started on treatment ^d			MDR/RR-TB: 217, XDR-TB: 5

Treatment success rate and cohort size

	Success	Cohort
New and relapse cases registered in 2014	70%	9 000
Previously treated cases, excluding relapse, registered in 2014	59%	936
HIV-positive TB cases, all types, registered in 2014	69%	5 466
MDR/RR-TB cases started on second-line treatment in 2013	63%	163
XDR-TB cases started on second-line treatment in 2013	33%	3

TB preventive treatment, 2015

% of HIV-positive people (newly enrolled in care) on preventive treatment	
% of children (aged < 5) household contacts of bacteriologically-confirmed TB cases on preventive treatment	

TB financing, 2016

National TB budget (US\$ millions)	6.4
Funding source	12% domestic, 19% international, 69% unfunded

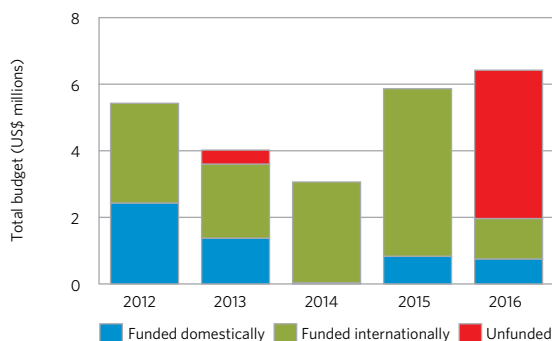
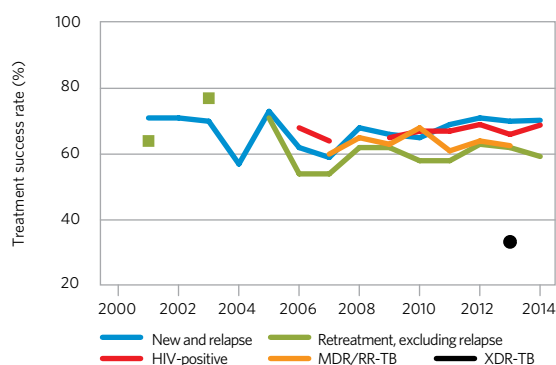
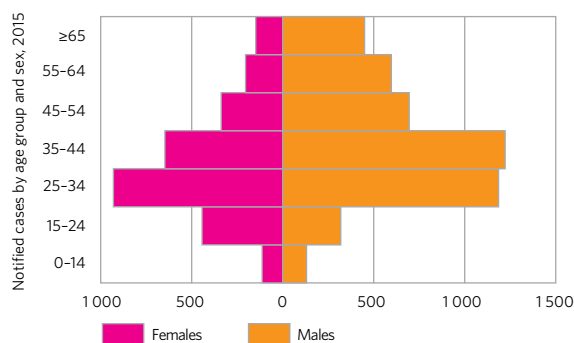
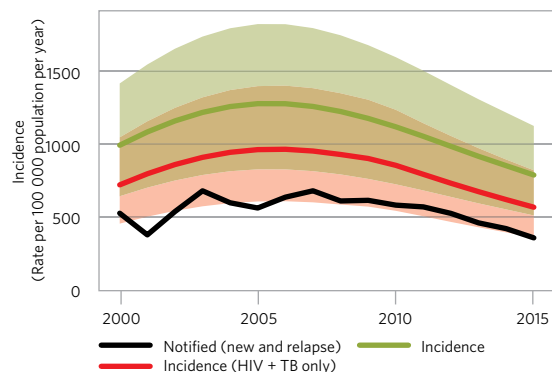
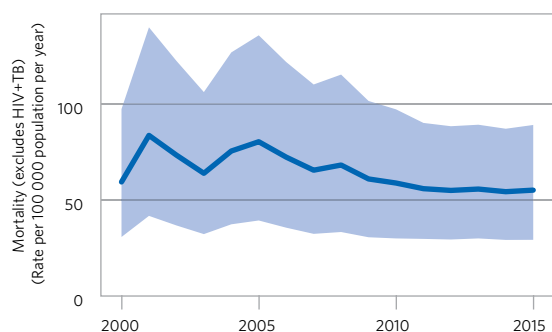
Data are as reported to WHO. Estimates of TB and MDR/RR-TB burden are produced by WHO in consultation with countries. Estimates are rounded and totals are computed prior to rounding.

^a Ranges represent uncertainty intervals.

^b MDR is TB resistant to rifampicin and isoniazid; RR is TB resistant to rifampicin.

^c Includes cases with unknown previous TB treatment history.

^d Includes patients diagnosed before 2015 and patients who were not laboratory-confirmed.



Liberia

population 2015 :: **4.5 million**

Estimates of TB burden,^a 2015

	Number (thousands)	Rate (per 100 000 population)
Mortality (excludes HIV+TB)	3.2 (1.9-4.8)	70 (41-107)
Mortality (HIV+TB only)	0.84 (0.7-1)	19 (16-22)
Incidence (includes HIV+TB)	14 (9-20)	308 (199-440)
Incidence (HIV+TB only)	1.8 (1.1-2.6)	40 (25-58)
Incidence (MDR/RR-TB) ^b	0.43 (0-0.99)	9.5 (0-22)

Estimated TB incidence by age and sex (thousands),^a 2015

	0-14 years	> 14 years	Total
Females	1.1 (0.54-1.6)	3.8 (0.96-6.7)	4.9 (1.5-8.3)
Males	0.91 (0.54-1.3)	8.1 (5.5-11)	9 (6-12)
Total	2 (1.3-2.7)	12 (8.8-15)	14 (9-20)

TB case notifications, 2015

Total cases notified	5 849
Total new and relapse	5 814
— % tested with rapid diagnostics at time of diagnosis	
— % with known HIV status	73%
— % pulmonary	78%
— % bacteriologically confirmed among pulmonary	61%

Universal health coverage and social protection

TB treatment coverage (notified/estimated incidence), 2015	42% (29-65)
TB patients facing catastrophic total costs	
TB case fatality ratio (estimated mortality/estimated incidence), 2015	0.3 (0.17-0.5)

TB/HIV care in new and relapse TB patients, 2015

	Number	(%)
Patients with known HIV-status who are HIV-positive	548	13%
— on antiretroviral therapy	154	28%

Drug-resistant TB care, 2015

	New cases	Previously treated cases	Total number ^c
Estimated MDR/RR-TB cases among notified pulmonary TB cases			140 (0-320)
Estimated % of TB cases with MDR/RR-TB	2.8% (0.1-6.7)	21% (2.2-39)	
% notified tested for rifampicin resistance	<1%	0%	15
MDR/RR-TB cases tested for resistance to second-line drugs			0
Laboratory-confirmed cases			MDR/RR-TB: 0, XDR-TB: 0
Patients started on treatment ^d			MDR/RR-TB: 15, XDR-TB: 0

Treatment success rate and cohort size

	Success	Cohort
New and relapse cases registered in 2014	74%	4 998
Previously treated cases, excluding relapse, registered in 2014	49%	37
HIV-positive TB cases, all types, registered in 2014		
MDR/RR-TB cases started on second-line treatment in 2013		
XDR-TB cases started on second-line treatment in 2013		

TB preventive treatment, 2015

% of HIV-positive people (newly enrolled in care) on preventive treatment	
% of children (aged < 5) household contacts of bacteriologically-confirmed TB cases on preventive treatment	

TB financing, 2016

National TB budget (US\$ millions)	1.3
Funding source	0% domestic, 100% international, 0% unfunded

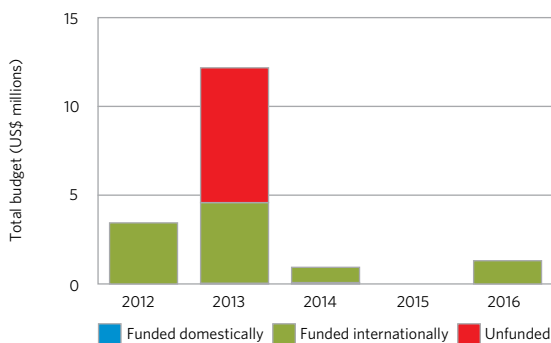
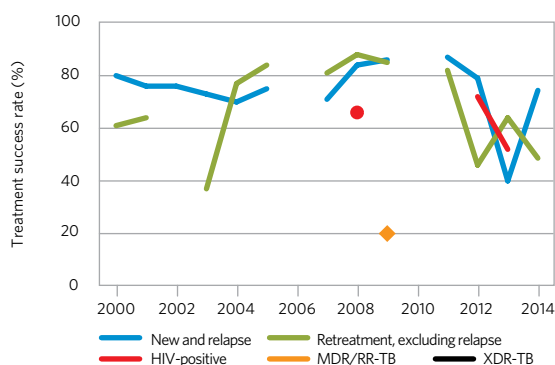
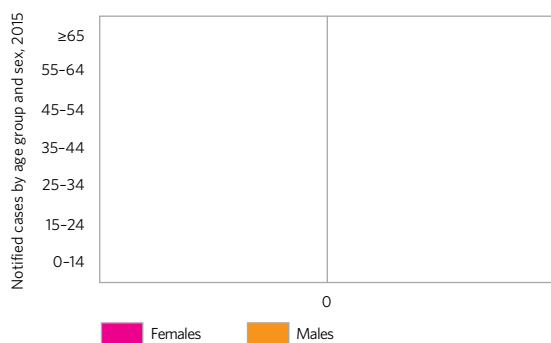
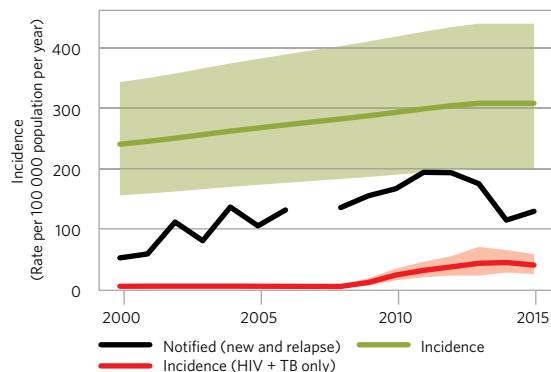
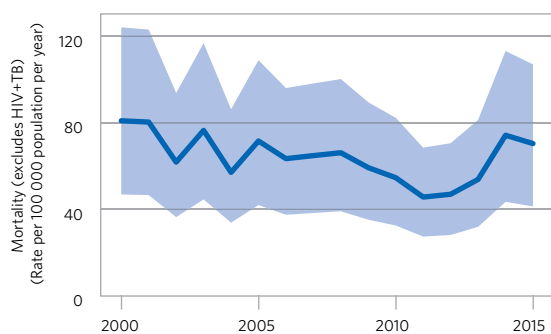
Data are as reported to WHO. Estimates of TB and MDR/RR-TB burden are produced by WHO in consultation with countries. Estimates are rounded and totals are computed prior to rounding.

^a Ranges represent uncertainty intervals.

^b MDR is TB resistant to rifampicin and isoniazid; RR is TB resistant to rifampicin.

^c Includes cases with unknown previous TB treatment history.

^d Includes patients diagnosed before 2015 and patients who were not laboratory-confirmed.



Namibia

Estimates of TB burden,^a 2015

	Number (thousands)	Rate (per 100 000 population)
Mortality (excludes HIV+TB)	0.78 (0.51-1.1)	32 (21-45)
Mortality (HIV+TB only)	0.88 (0.062-2.8)	36 (2.5-112)
Incidence (includes HIV+TB)	12 (9.3-15)	489 (376-616)
Incidence (HIV+TB only)	4.9 (3.8-6.2)	199 (153-252)
Incidence (MDR/RR-TB) ^b	1.1 (0.84-1.3)	45 (34-53)

Estimated TB incidence by age and sex (thousands),^a 2015

	0-14 years	> 14 years	Total
Females	0.57 (0.27-0.87)	4.4 (2.8-6)	5 (3-6.9)
Males	0.63 (0.39-0.86)	6.4 (4.8-8)	7.1 (5.2-8.9)
Total	1.2 (0.82-1.6)	11 (9.2-12)	12 (9.3-15)

TB case notifications, 2015

Total cases notified	9 944
Total new and relapse	9 614
— % tested with rapid diagnostics at time of diagnosis	
— % with known HIV status	98%
— % pulmonary	83%
— % bacteriologically confirmed among pulmonary	76%

Universal health coverage and social protection

TB treatment coverage (notified/estimated incidence), 2015	80% (64-100)
TB patients facing catastrophic total costs	
TB case fatality ratio (estimated mortality/estimated incidence), 2015	0.14 (0.05-0.3)

TB/HIV care in new and relapse TB patients, 2015

	Number	(%)
Patients with known HIV-status who are HIV-positive	3 796	40%
— on antiretroviral therapy	3 480	92%

Drug-resistant TB care, 2015

	New cases	Previously treated cases	Total number ^c
Estimated MDR/RR-TB cases among notified pulmonary TB cases			540 (470-610)
Estimated % of TB cases with MDR/RR-TB	5% (4.1-5.9)	12% (9.3-14)	
% notified tested for rifampicin resistance			320
MDR/RR-TB cases tested for resistance to second-line drugs			
Laboratory-confirmed cases		MDR/RR-TB: 320, XDR-TB: 3	
Patients started on treatment ^d		MDR/RR-TB: 308, XDR-TB: 2	

Treatment success rate and cohort size

	Success	Cohort
New cases registered in 2014	87%	7 981
Previously treated cases registered in 2014	78%	2 068
HIV-positive TB cases, all types, registered in 2014	80%	3 112
MDR/RR-TB cases started on second-line treatment in 2013	64%	184
XDR-TB cases started on second-line treatment in 2013	0%	6

TB preventive treatment, 2015

% of HIV-positive people (newly enrolled in care) on preventive treatment	
% of children (aged < 5) household contacts of bacteriologically-confirmed TB cases on preventive treatment	

TB financing, 2016

National TB budget (US\$ millions)	38
Funding source	51% domestic, 26% international, 23% unfunded

Data are as reported to WHO. Estimates of TB and MDR/RR-TB burden are produced by WHO in consultation with countries. Estimates are rounded and totals are computed prior to rounding.

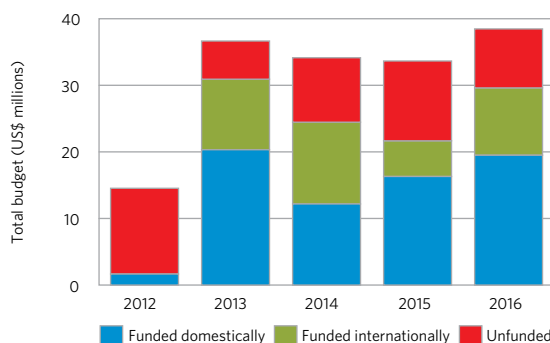
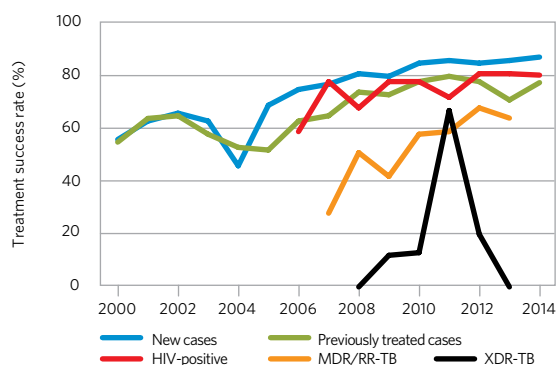
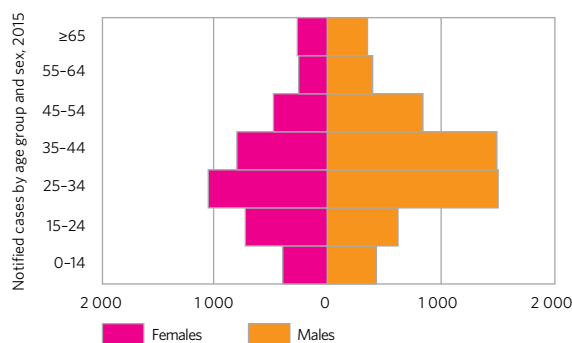
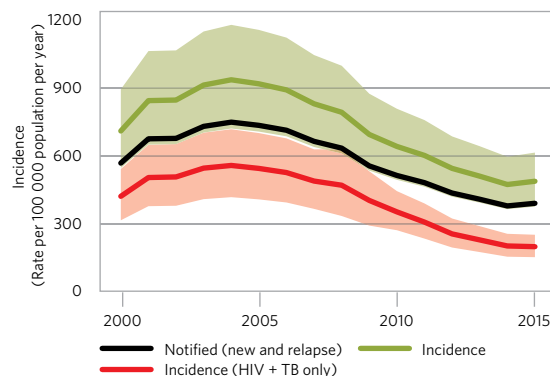
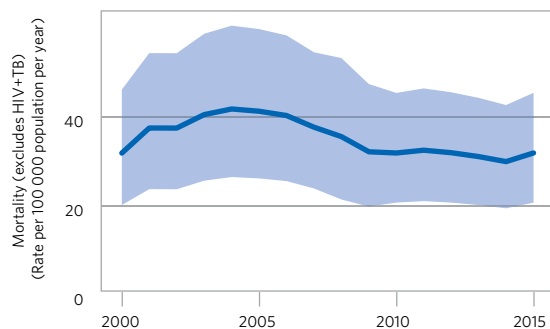
^a Ranges represent uncertainty intervals.

^b MDR is TB resistant to rifampicin and isoniazid; RR is TB resistant to rifampicin.

^c Includes cases with unknown previous TB treatment history.

^d Includes patients diagnosed before 2015 and patients who were not laboratory-confirmed.

population 2015 :: **2.5 million**



Papua New Guinea

population 2015 :: **7.6 million**

Estimates of TB burden,^a 2015

	Number (thousands)	Rate (per 100 000 population)
Mortality (excludes HIV+TB)	3.1 (1.8-4.6)	40 (24-61)
Mortality (HIV+TB only)	0.67 (0.4-1)	8.8 (5.2-13)
Incidence (includes HIV+TB)	33 (27-40)	432 (352-521)
Incidence (HIV+TB only)	4.9 (3-7.3)	64 (39-96)
Incidence (MDR/RR-TB) ^b	1.9 (1.2-2.5)	25 (16-33)

Estimated TB incidence by age and sex (thousands),^a 2015

	0-14 years	> 14 years	Total
Females	2 (1.1-2.9)	14 (11-18)	16 (12-21)
Males	1.6 (0.99-2.2)	15 (12-19)	17 (13-21)
Total	3.6 (2.4-4.8)	29 (26-33)	33 (27-40)

TB case notifications, 2015

Total cases notified	28 696
Total new and relapse	26 347
— % tested with rapid diagnostics at time of diagnosis	
— % with known HIV status	36%
— % pulmonary	54%
— % bacteriologically confirmed among pulmonary	31%

Universal health coverage and social protection

TB treatment coverage (notified/estimated incidence), 2015	80% (66-98)
TB patients facing catastrophic total costs	
TB case fatality ratio (estimated mortality/estimated incidence), 2015	0.11 (0.07-0.17)

TB/HIV care in new and relapse TB patients, 2015

	Number	(%)
Patients with known HIV-status who are HIV-positive	758	8%
— on antiretroviral therapy	494	65%

Drug-resistant TB care, 2015

	New cases	Previously treated cases	Total number ^c
Estimated MDR/RR-TB cases among notified pulmonary TB cases			1 100 (800-1500)
Estimated % of TB cases with MDR/RR-TB	3.4% (1.7-5)	26% (15-36)	
% notified tested for rifampicin resistance			1 895
MDR/RR-TB cases tested for resistance to second-line drugs			147
Laboratory-confirmed cases		MDR/RR-TB: 254, XDR-TB: 11	
Patients started on treatment ^d		MDR/RR-TB: 225, XDR-TB: 11	

Treatment success rate and cohort size

	Success	Cohort
New cases registered in 2014	70%	4 077
Previously treated cases registered in 2014	63%	728
HIV-positive TB cases, all types, registered in 2014		
MDR/RR-TB cases started on second-line treatment in 2013		
XDR-TB cases started on second-line treatment in 2013		

TB preventive treatment, 2015

% of HIV-positive people (newly enrolled in care) on preventive treatment	
% of children (aged < 5) household contacts of bacteriologically-confirmed TB cases on preventive treatment	

TB financing, 2016

National TB budget (US\$ millions)	11
Funding source	domestic, 100% international, 0% unfunded

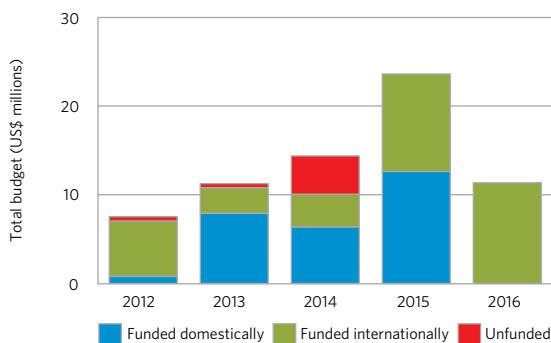
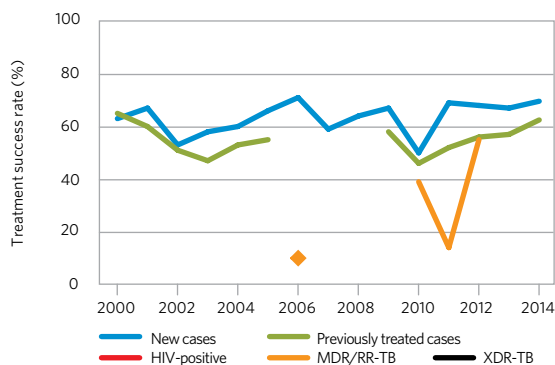
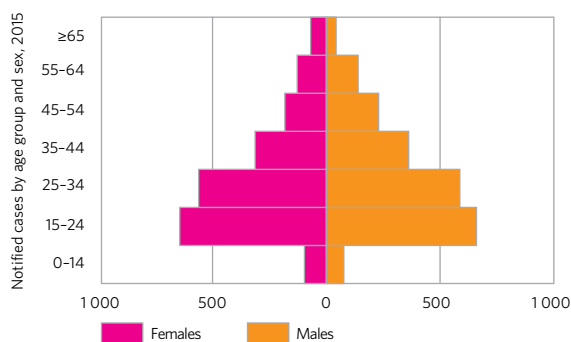
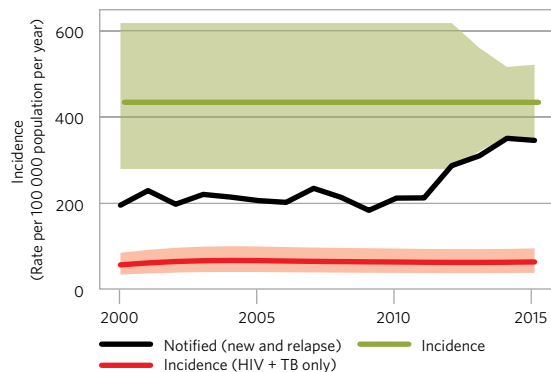
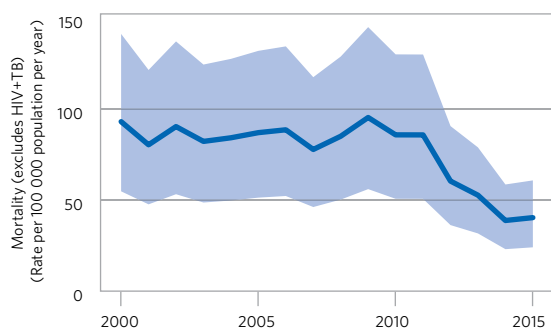
Data are as reported to WHO. Estimates of TB and MDR/RR-TB burden are produced by WHO in consultation with countries. Estimates are rounded and totals are computed prior to rounding.

^a Ranges represent uncertainty intervals.

^b MDR is TB resistant to rifampicin and isoniazid; RR is TB resistant to rifampicin.

^c Includes cases with unknown previous TB treatment history.

^d Includes patients diagnosed before 2015 and patients who were not laboratory-confirmed.



Sierra Leone

population 2015 :: **6.5 million**

Estimates of TB burden,^a 2015

	Number (thousands)	Rate (per 100 000 population)
Mortality (excludes HIV+TB)	3.3 (1.9–4.9)	51 (30–76)
Mortality (HIV+TB only)	0.82 (0.4–1.4)	13 (6.2–21)
Incidence (includes HIV+TB)	20 (13–28)	307 (198–438)
Incidence (HIV+TB only)	2.6 (1.7–3.8)	41 (26–59)
Incidence (MDR/RR-TB) ^b	0.7 (0–1.5)	11 (0–23)

Estimated TB incidence by age and sex (thousands),^a 2015

	0–14 years	> 14 years	Total
Females	1.2 (0.46–1.9)	6.3 (2.4–10)	7.5 (2.9–12)
Males	1.3 (0.8–1.9)	11 (7.5–14)	12 (8.3–16)
Total	2.5 (1.6–3.3)	17 (13–22)	20 (13–28)

TB case notifications, 2015

Total cases notified	12 103
Total new and relapse	11 861
— % tested with rapid diagnostics at time of diagnosis	
— % with known HIV status	97%
— % pulmonary	95%
— % bacteriologically confirmed among pulmonary	69%

Universal health coverage and social protection

TB treatment coverage (notified/estimated incidence), 2015	60% (42–93)
TB patients facing catastrophic total costs	
TB case fatality ratio (estimated mortality/estimated incidence), 2015	0.21 (0.12–0.36)

TB/HIV care in new and relapse TB patients, 2015

	Number	(%)
Patients with known HIV-status who are HIV-positive	1 573	14%
— on antiretroviral therapy	1 118	71%

Drug-resistant TB care, 2015

	New cases	Previously treated cases	Total number ^c
Estimated MDR/RR-TB cases among notified pulmonary TB cases			420 (0–860)
Estimated % of TB cases with MDR/RR-TB	2.8% (0.1–6.7)	21% (2.2–39)	
% notified tested for rifampicin resistance			
MDR/RR-TB cases tested for resistance to second-line drugs			
Laboratory-confirmed cases			MDR/RR-TB: , XDR-TB:
Patients started on treatment ^d			MDR/RR-TB: 0, XDR-TB: 0

Treatment success rate and cohort size

	Success	Cohort
New and relapse cases registered in 2014	85%	12 191
Previously treated cases, excluding relapse, registered in 2014	62%	227
HIV-positive TB cases, all types, registered in 2014		
MDR/RR-TB cases started on second-line treatment in 2013		
XDR-TB cases started on second-line treatment in 2013		

TB preventive treatment, 2015

% of HIV-positive people (newly enrolled in care) on preventive treatment	7%
% of children (aged < 5) household contacts of bacteriologically-confirmed TB cases on preventive treatment	

TB financing, 2016

National TB budget (US\$ millions)	10
Funding source	0% domestic, 100% international, 0% unfunded

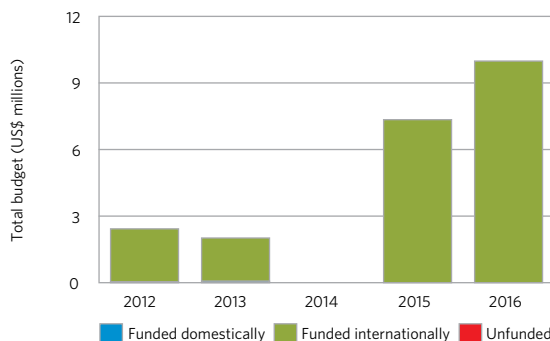
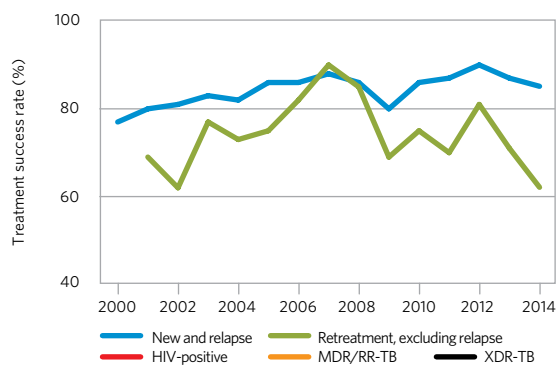
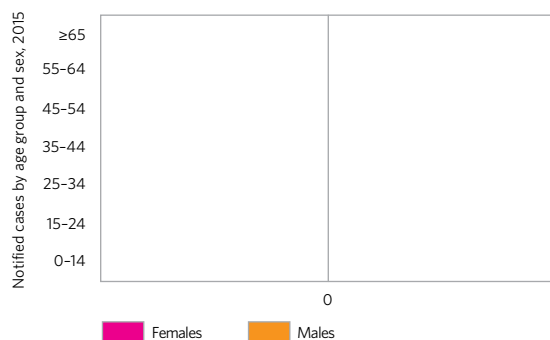
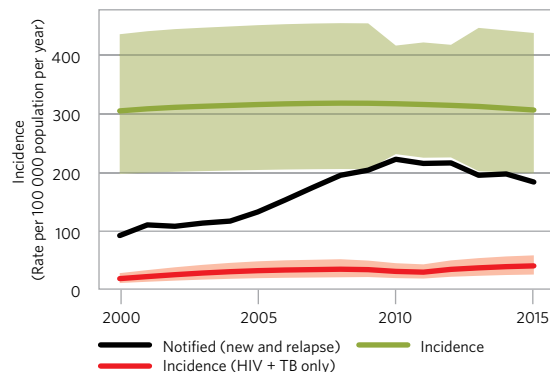
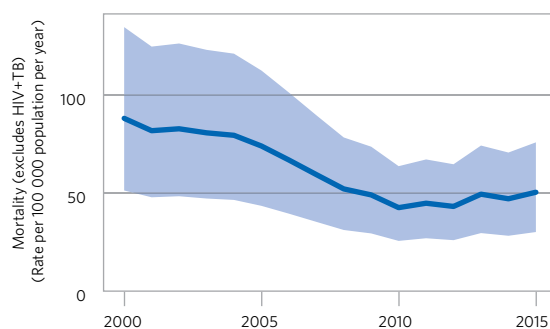
Data are as reported to WHO. Estimates of TB and MDR/RR-TB burden are produced by WHO in consultation with countries. Estimates are rounded and totals are computed prior to rounding.

^a Ranges represent uncertainty intervals.

^b MDR is TB resistant to rifampicin and isoniazid; RR is TB resistant to rifampicin.

^c Includes cases with unknown previous TB treatment history.

^d Includes patients diagnosed before 2015 and patients who were not laboratory-confirmed.



Zambia

population 2015 :: **16 million**

Estimates of TB burden,^a 2015

	Number (thousands)	Rate (per 100 000 population)
Mortality (excludes HIV+TB)	5 (2.9-7.7)	31 (18-47)
Mortality (HIV+TB only)	12 (6.9-20)	77 (42-121)
Incidence (includes HIV+TB)	63 (41-91)	391 (253-558)
Incidence (HIV+TB only)	38 (24-55)	235 (149-339)
Incidence (MDR/RR-TB) ^b	2.3 (1.4-3.2)	14 (8.6-20)

Estimated TB incidence by age and sex (thousands),^a 2015

	0-14 years	> 14 years	Total
Females	2.8 (1.1-4.5)	21 (8.8-33)	24 (9.9-38)
Males	3.2 (1.9-4.5)	36 (25-47)	39 (27-52)
Total	6 (3.9-8.2)	57 (44-71)	63 (41-91)

TB case notifications, 2015

Total cases notified	41 588
Total new and relapse	36 741
— % tested with rapid diagnostics at time of diagnosis	100%
— % with known HIV status	95%
— % pulmonary	79%
— % bacteriologically confirmed among pulmonary	49%

Universal health coverage and social protection

TB treatment coverage (notified/estimated incidence), 2015	58% (41-90)
TB patients facing catastrophic total costs	
TB case fatality ratio (estimated mortality/estimated incidence), 2015	0.29 (0.16-0.48)

TB/HIV care in new and relapse TB patients, 2015

	Number	(%)
Patients with known HIV-status who are HIV-positive	20 967	60%
— on antiretroviral therapy	15 897	76%

Drug-resistant TB care, 2015

	New cases	Previously treated cases	Total number ^c
Estimated MDR/RR-TB cases among notified pulmonary TB cases			1 500 (990-2 100)
Estimated % of TB cases with MDR/RR-TB	1.1% (0.13-2.1)	18% (11-26)	
% notified tested for rifampicin resistance	<1%	9%	695
MDR/RR-TB cases tested for resistance to second-line drugs			0
Laboratory-confirmed cases		MDR/RR-TB: 196, XDR-TB: 0	
Patients started on treatment ^d		MDR/RR-TB: 99, XDR-TB: 0	

Treatment success rate and cohort size

	Success	Cohort
New and relapse cases registered in 2014	85%	37 930
Previously treated cases, excluding relapse, registered in 2014	80%	4 786
HIV-positive TB cases, all types, registered in 2014		
MDR/RR-TB cases started on second-line treatment in 2013	33%	58
XDR-TB cases started on second-line treatment in 2013		0

TB preventive treatment, 2015

% of HIV-positive people (newly enrolled in care) on preventive treatment	66%
% of children (aged < 5) household contacts of bacteriologically-confirmed TB cases on preventive treatment	

TB financing, 2016

National TB budget (US\$ millions)	11
Funding source	9% domestic, 51% international, 40% unfunded

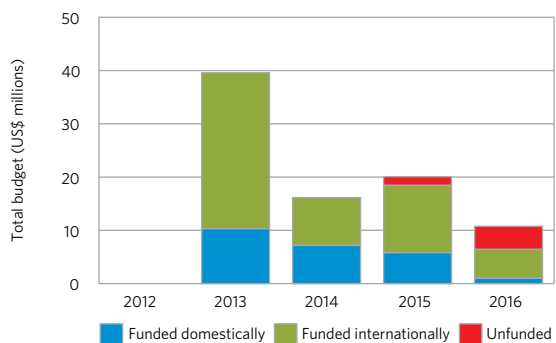
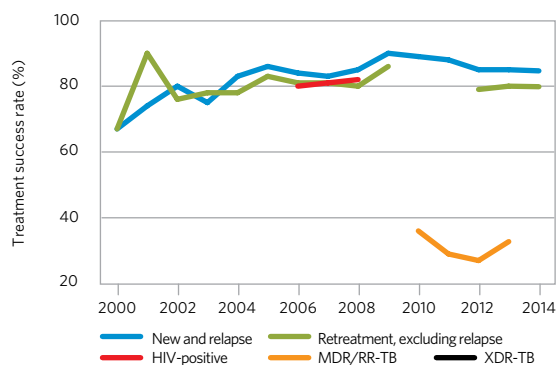
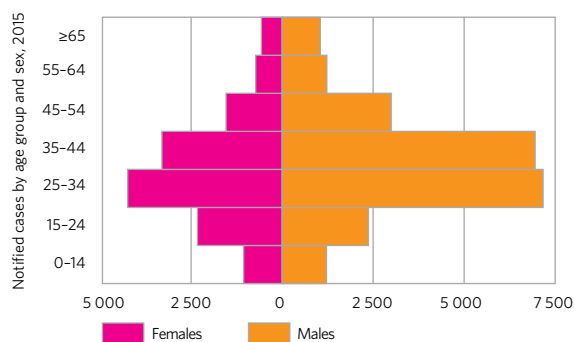
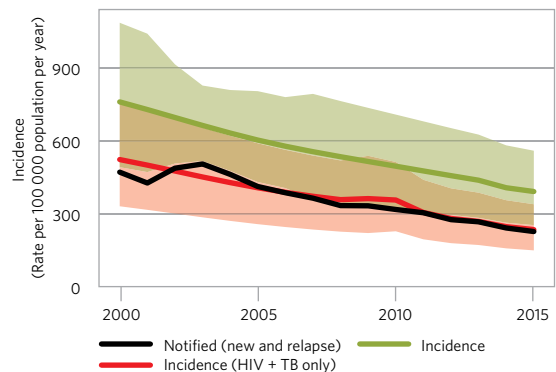
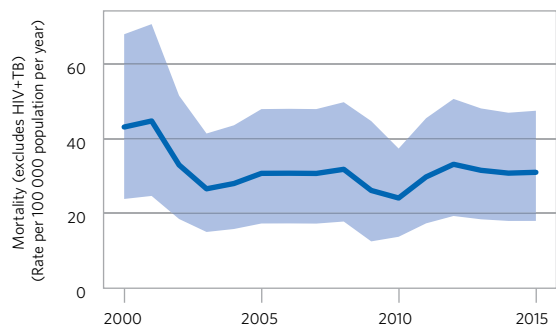
Data are as reported to WHO. Estimates of TB and MDR/RR-TB burden are produced by WHO in consultation with countries. Estimates are rounded and totals are computed prior to rounding.

^a Ranges represent uncertainty intervals.

^b MDR is TB resistant to rifampicin and isoniazid; RR is TB resistant to rifampicin.

^c Includes cases with unknown previous TB treatment history.

^d Includes patients diagnosed before 2015 and patients who were not laboratory-confirmed.



Zimbabwe

Estimates of TB burden,^a 2015

	Number (thousands)	Rate (per 100 000 population)
Mortality (excludes HIV+TB)	1.7 (0.99-2.5)	11 (6.3-16)
Mortality (HIV+TB only)	6.3 (2.2-13)	40 (14-81)
Incidence (includes HIV+TB)	38 (28-49)	242 (179-314)
Incidence (HIV+TB only)	26 (17-37)	167 (107-240)
Incidence (MDR/RR-TB) ^b	1.8 (1-2.5)	12 (6.4-16)

Estimated TB incidence by age and sex (thousands),^a 2015

	0-14 years	> 14 years	Total
Females	2.4 (1.1-3.6)	14 (8.3-19)	16 (9.4-23)
Males	2.6 (1.7-3.6)	19 (14-24)	22 (15-28)
Total	5 (3.5-6.5)	33 (27-39)	38 (28-49)

TB case notifications, 2015

Total cases notified	28 225
Total new and relapse	26 990
— % tested with rapid diagnostics at time of diagnosis	
— % with known HIV status	96%
— % pulmonary	87%
— % bacteriologically confirmed among pulmonary	54%

Universal health coverage and social protection

TB treatment coverage (notified/estimated incidence), 2015	72% (55-97)
TB patients facing catastrophic total costs	
TB case fatality ratio (estimated mortality/estimated incidence), 2015	0.22 (0.09-0.4)

TB/HIV care in new and relapse TB patients, 2015

	Number	(%)
Patients with known HIV-status who are HIV-positive	18 072	70%
— on antiretroviral therapy	12 924	72%

Drug-resistant TB care, 2015

	New cases	Previously treated cases	Total number ^c
Estimated MDR/RR-TB cases among notified pulmonary TB cases			1 100 (690-1 600)
Estimated % of TB cases with MDR/RR-TB	3.2% (1.4-5)	14% (6.9-21)	
% notified tested for rifampicin resistance			9 241
MDR/RR-TB cases tested for resistance to second-line drugs			95
Laboratory-confirmed cases		MDR/RR-TB: 468, XDR-TB: 4	
Patients started on treatment ^d		MDR/RR-TB: 433, XDR-TB: 5	

Treatment success rate and cohort size

	Success	Cohort
New cases registered in 2014	81%	29 653
Previously treated cases registered in 2014	51%	2 363
HIV-positive TB cases, all types, registered in 2014	68%	19 290
MDR/RR-TB cases started on second-line treatment in 2013	59%	351
XDR-TB cases started on second-line treatment in 2013		

TB preventive treatment, 2015

% of HIV-positive people (newly enrolled in care) on preventive treatment	31%
% of children (aged < 5) household contacts of bacteriologically-confirmed TB cases on preventive treatment	31% (28-34)

TB financing 2016

National TB budget (US\$ millions)	28
Funding source	domestic, 54% international, 46% unfunded

Data are as reported to WHO. Estimates of TB and MDR/RR-TB burden are produced by WHO in consultation with countries. Estimates are rounded and totals are computed prior to rounding.

^a Ranges represent uncertainty intervals.

^b MDR is TB resistant to rifampicin and isoniazid; RR is TB resistant to rifampicin.

^c Includes cases with unknown previous TB treatment history.

^d Includes patients diagnosed before 2015 and patients who were not laboratory-confirmed.

population 2015 :: **16 million**

