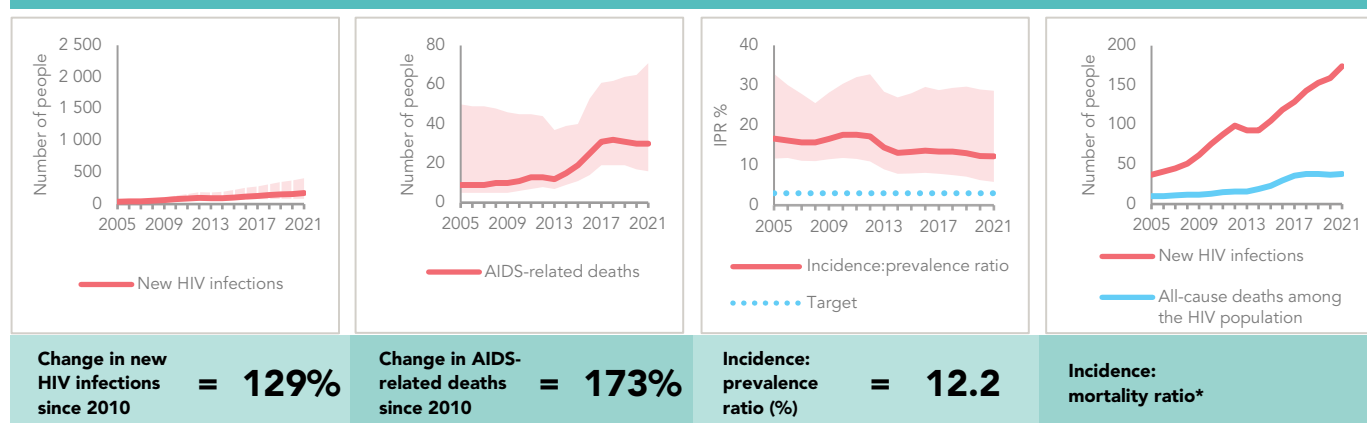


## FIJI

## EPIDEMIC ESTIMATES

	2010	2015	2021
<b>New HIV infections</b>			
New HIV infections (all ages)	<100 [<100–<200]	<200 [<100–<500]	<200 [<100–<500]
New HIV infections (0–14)	<100 [<100–<100]	<100 [<100–<100]	<100 [<100–<100]
New HIV infections (15–24)	<100 [<100–<100]	<100 [<100–<100]	<100 [<100–<100]
New HIV infections (women, 15+)	<100 [<100–<100]	<100 [<100–<100]	<100 [<100–<200]
New HIV infections (men, 15+)	<100 [<100–<100]	<100 [<100–<200]	<100 [<100–<500]
HIV incidence (all ages) per 1000 population	0.09 [0.06–0.15]	0.12 [0.07–0.25]	0.19 [0.09–0.44]
<b>AIDS-related deaths</b>			
AIDS-related deaths (all ages)	<100 [<100–<100]	<100 [<100–<100]	<100 [<100–<100]
AIDS-related deaths (0–14)	<100 [<100–<100]	<100 [<100–<100]	<100 [<100–<100]
AIDS-related deaths (women, 15+)	<100 [<100–<100]	<100 [<100–<100]	<100 [<100–<100]
AIDS-related deaths (men, 15+)	<100 [<100–<100]	<100 [<100–<100]	<100 [<100–<100]
<b>People living with HIV</b>			
People living with HIV (all ages)	<500 [<500–910]	790 [580–1400]	1400 [900–2800]
People living with HIV (0–14)	<100 [<100–<100]	<100 [<100–<100]	<100 [<100–<200]
People living with HIV (women, 15+)	<200 [<200–<500]	<500 [<500–590]	640 [<500–1200]
People living with HIV (men, 15+)	<500 [<200–<500]	<500 [<500–710]	740 [<500–1500]
HIV prevalence (15–49)	<0.1 [0.1–0.2]	0.1 [0.1–0.2]	0.2 [0.2–0.5]

## EPIDEMIC TRANSITION METRICS

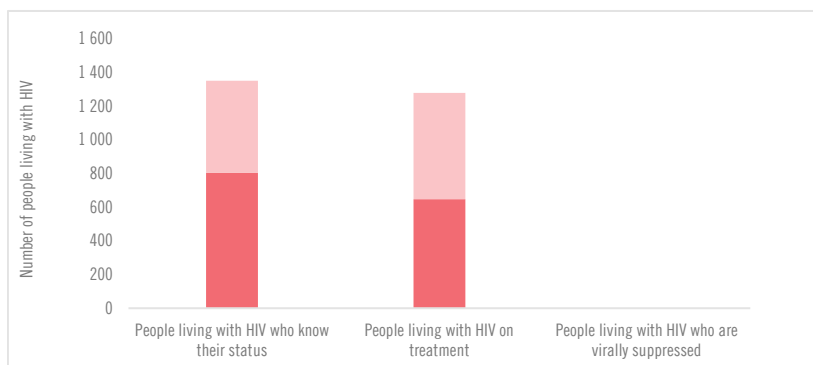


\* The incidence:mortality ratio is not published if the country has not achieved antiretroviral therapy coverage of 91% or higher (the testing and treatment target for 2025).

## EXPENDITURES

	Financing sources					Total
	Domestic private	Domestic public	International: PEPFAR	International: Global Fund	International: all others	
Last available report: 2016	...	US\$ 509 384	...	...	US\$ 158 885	US\$ 668 269

## HIV TESTING AND TREATMENT CASCADE



	57% [36-100%] 804	45% [29-90%] 647	...% [...-...%] ...
<b>All ages</b>			
<b>Children (0-14)</b>	98% [63-100%] 49	72% [46-100%] 36	...% [...-...%] ...
<b>Women (15+)</b>	56% [37-100%] 358	47% [31-88%] 302	...% [...-...%] ...
<b>Men (15+)</b>	54% [34-100%] 397	42% [27-85%] 309	...% [...-...%] ...

## ELIMINATION OF VERTICAL TRANSMISSION

	2015	2021
Percentage of pregnant women living with HIV accessing antiretroviral medicines	38% [27-69%]	58% [40-100%]
Final vertical transmission rate including during breastfeeding	24.4% [16.1-35.4%]	21.1% [18.0-42.0%]
Early infant diagnosis	35.1% [19.4-50.0%]	69.8% [38.5- >95%]