



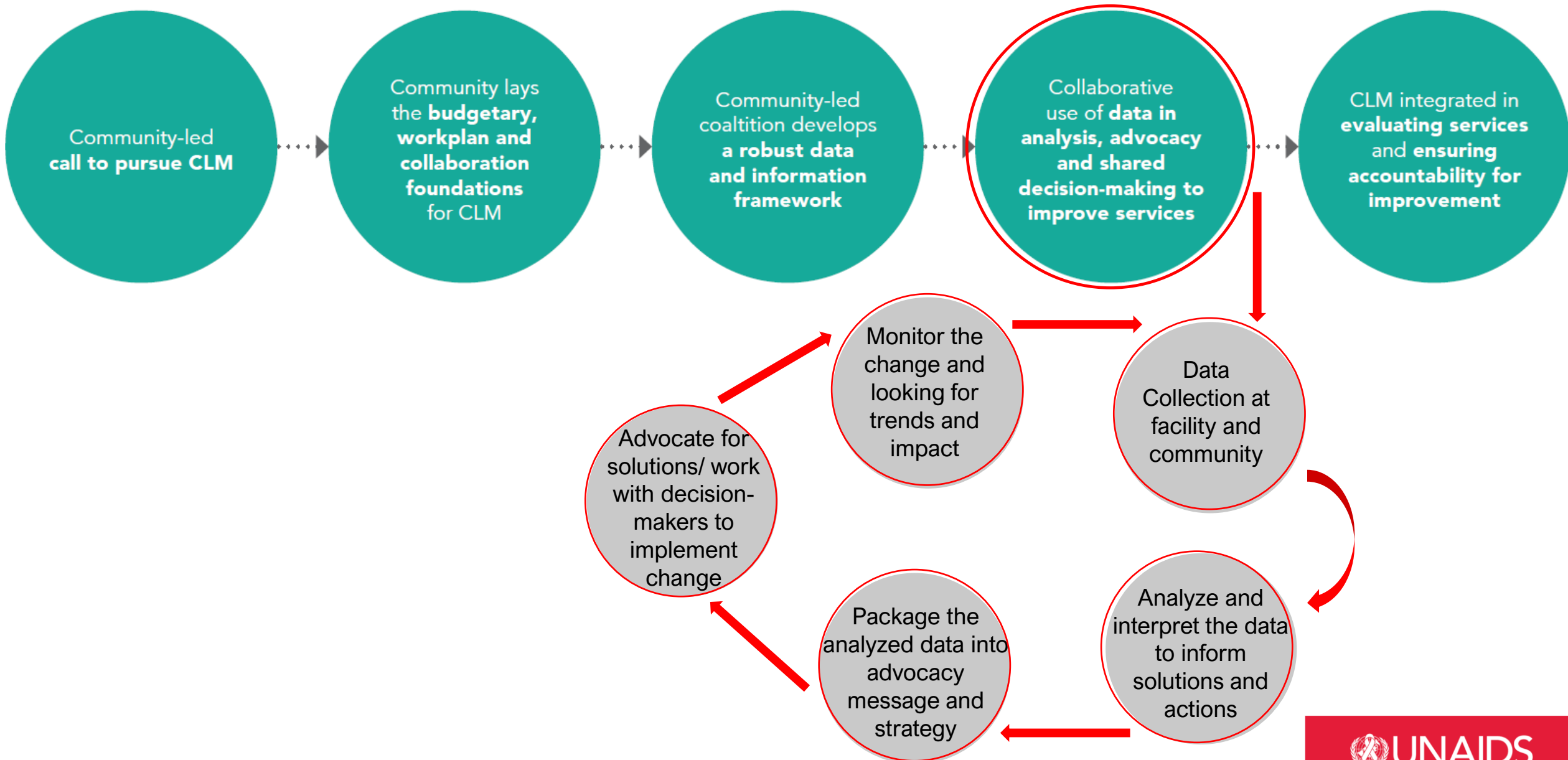
**DATA
INTERPRETATION,
EFFECTIVE USE FOR
ADVOCACY TO
CONTRIBUTE TO
GLOBAL AIDS
STRATEGY TARGETS**

Dr Ye Yu Shwe
UNAIDS Regional Support Team,
Asia and the Pacific
5 July 2022

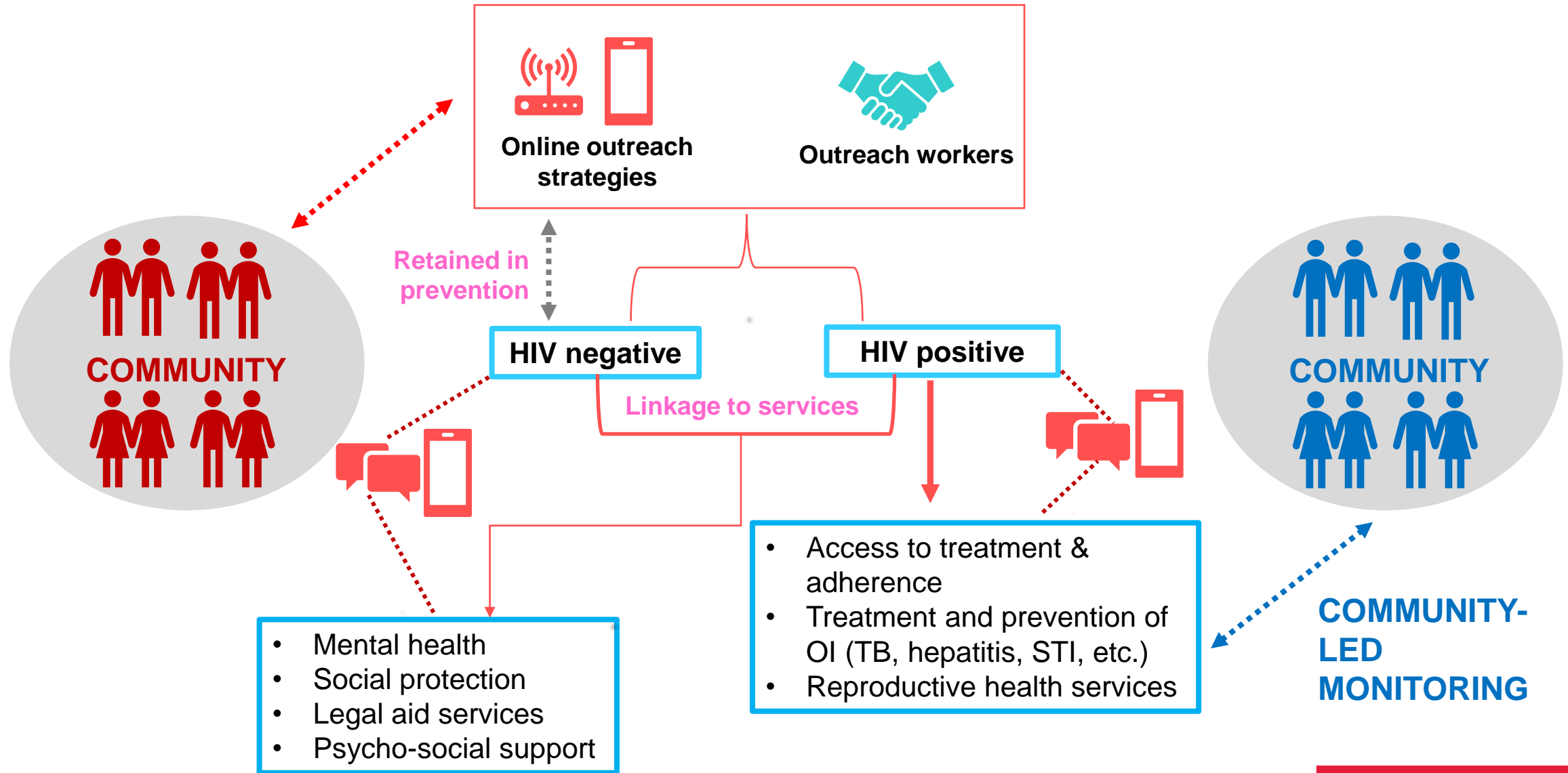
Community-Led Monitoring

- Community-led monitoring (CLM) is an accountability mechanism for improvement of the quality of HIV responses at different levels, led and implemented by community
- CLM uses a structured platform and rigorously trained peer monitors to systematically and routinely collect and analyse qualitative and quantitative data on HIV service delivery, and to establish rapid feedback loops with programme managers and health decision-makers.
- CLM data builds evidence on what works well, what is not working and what needs to be improved, with suggestions for targeted action to improve outcomes.
- CLM serves as a surveillance and accountability community mechanism (i.e., a watchdog function) for health services

CLM process and Data Use



People centered M & E system



Data Quality



Data Analysis



Data Interpretation



GIGO



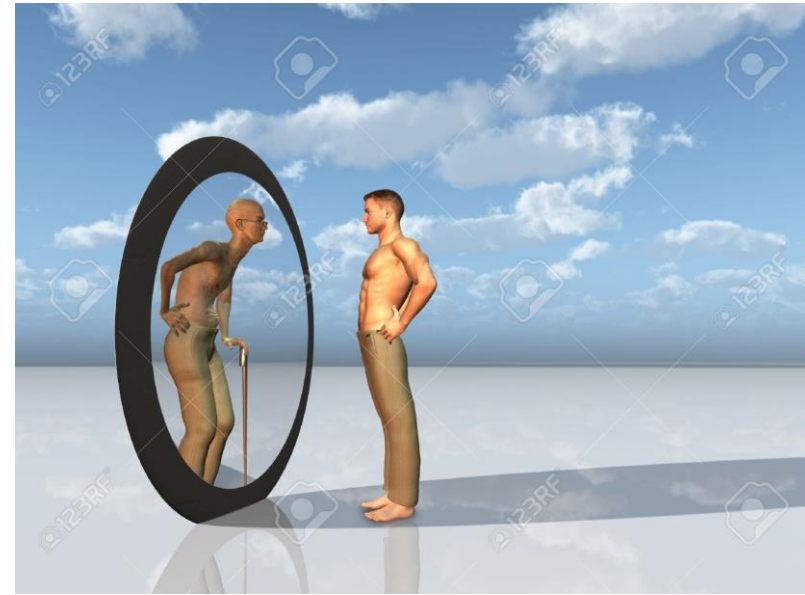
**GARBAGE IN
GARBAGE OUT**

Data Quality - At Every Step of the Way

Data Quality

- Designing questionnaire/ Registers/ Tools
- Training of data collectors/ monitors
- Testing the tools
- Recurrent training
- Developing an operational manual for questionnaire to:
 - Standardize the way of asking
 - Standardize the definitions

- 1. Accuracy**
- 2. Reliability**
- 3. Completeness**
- 4. Precision**
- 5. Timeliness**
- 6. Integrity**
- 7. Confidentiality**



Approach to analyze and interpret data

- Understand and learn ways to best summarize data
- Choose the right table/graph/format for the right data
- Interpret data to consider the programmatic relevance

Summarizing data

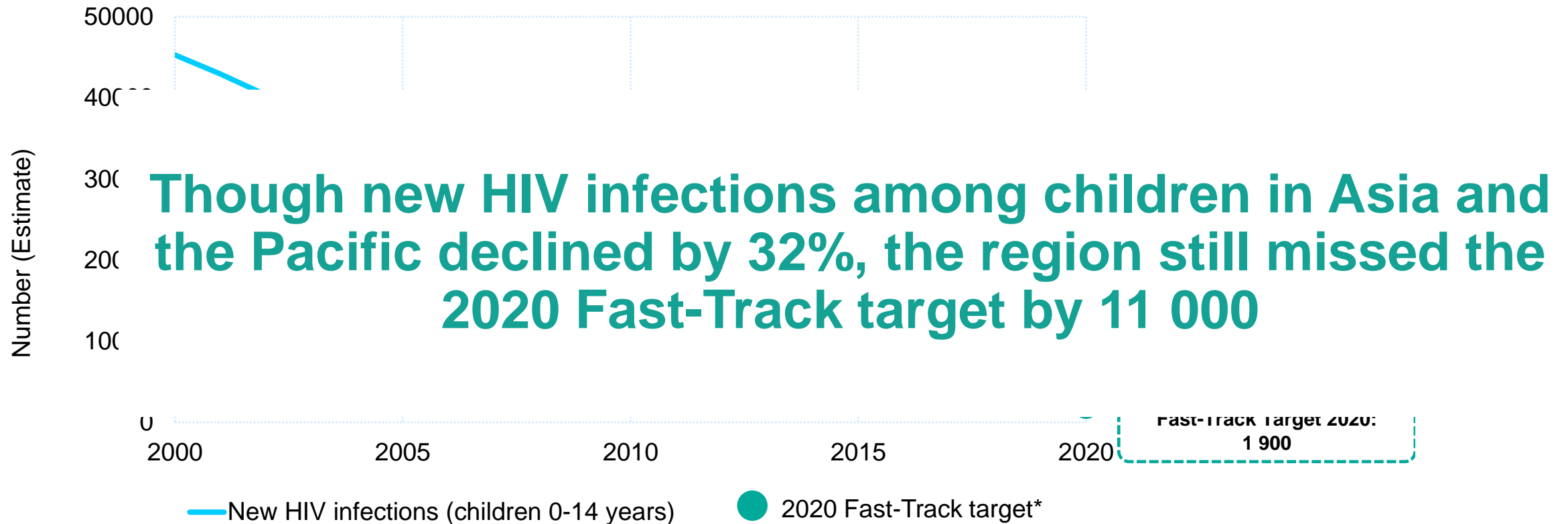
- **Tables**
 - Simplest way to summarize data
 - Data are presented as absolute numbers or percentages or qualitative forms
- **Charts and graphs**
 - Visual representation of data
 - Data are presented as absolute numbers or percentages
 - Trends, relationships, shared proportions and comparisons
- **Calculated Statistical Values**
 - The mean, the average or arithmetic mean, is computed by adding all the values and dividing by the number of values.
 - The middle value is called the median—the data point at which 50% of the values fall above it and 50% of the values fall below it.
 - The maximum, minimum and count, etc

Interpreting data

- Adding meaning to information by making connections and comparisons and exploring causes and consequences
 - Relevance of finding
 - Reasons for finding
 - Consider/triangulate with other data/info
 - Mind the data gap

Interpreting data: Relevance of finding

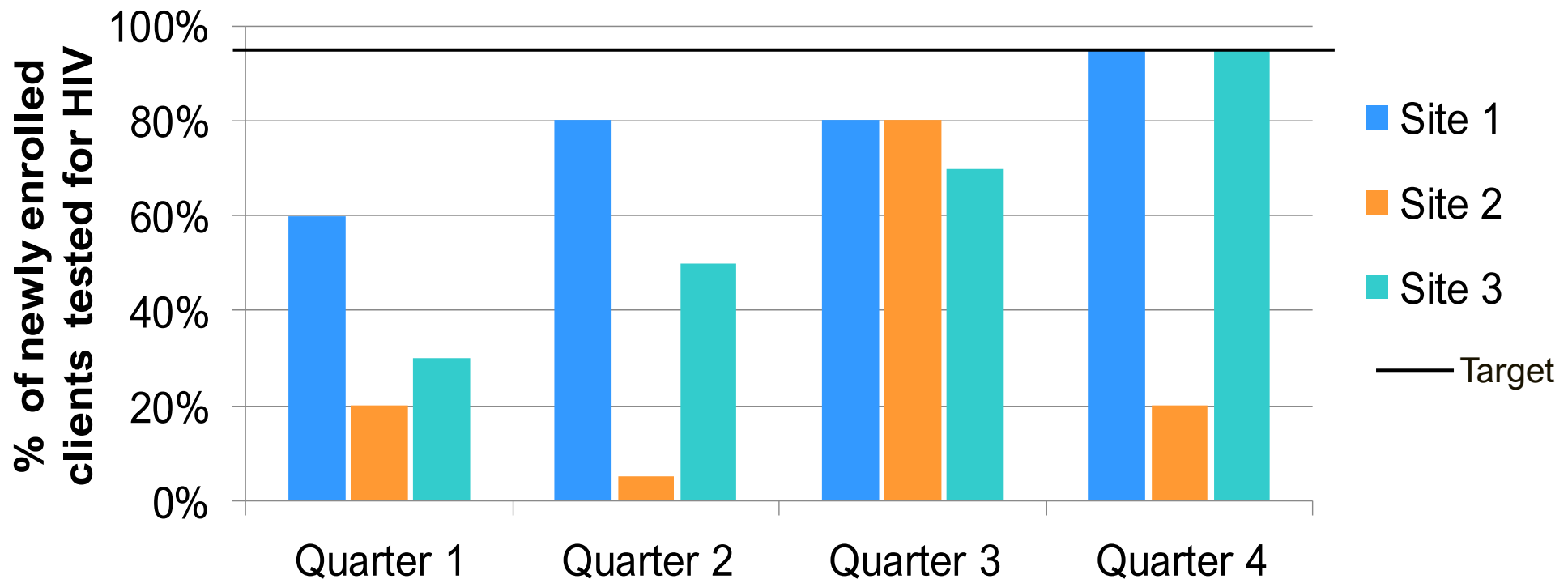
New HIV infections among children in Asia and the Pacific, 2000-2020



Interpreting data: Reasons for finding

Have the sites met their goal?

Percentage of newly enrolled clients tested for HIV at each quarter, by testing site



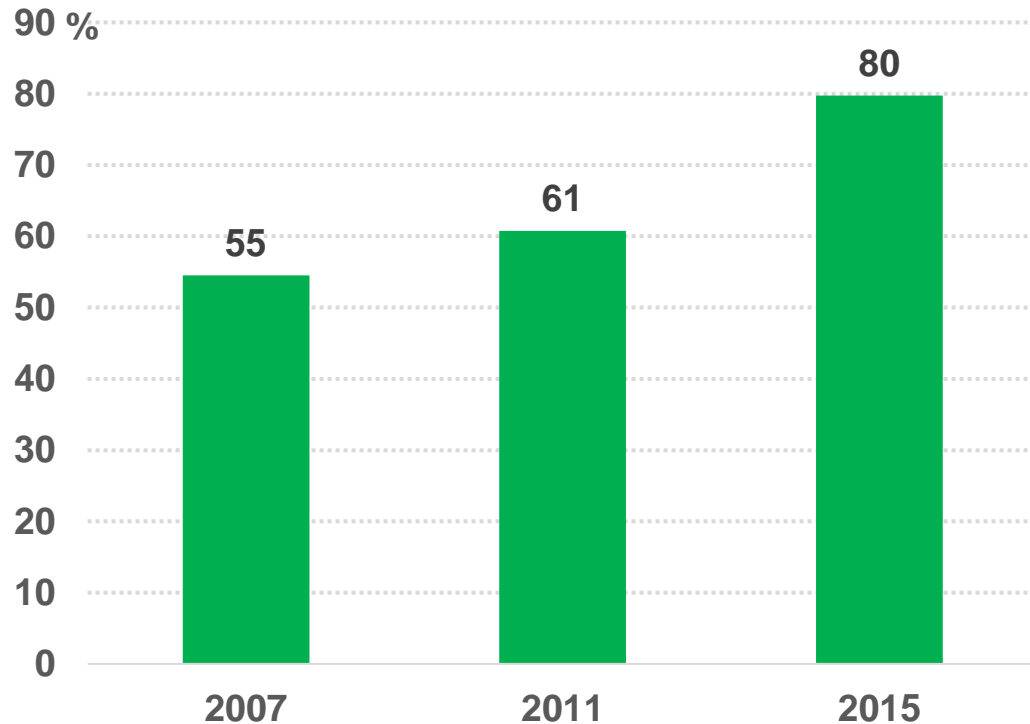
Looking at a trend data

- A trend is a helpful way to detect sudden changes in reported performance.
- A stable system will show a stable trend.
- When a change in trend is detected, especially one that is marked by an unusual spike or drop, it must be investigated whether these sudden changes are
 - a result of a data quality problem (e.g. transcription error, incomplete reporting, denominator issues, change in indicator definitions or reporting protocols);
 - or from an actual change in service delivery. Dramatic changes due to a known programmatic event could be related to e.g. stock out, vacancy of key staff positions, or the launch of a major campaign to promote services.
- Look-out for unexpected shifts in service delivery or more gradual increases in demand for services or declining levels of service utilization.
- The trend line should be compared to expected performance, i.e. targets to determine whether there are implementation problems.
- Trend lines that fluctuate a lot may also indicate an unstable programme

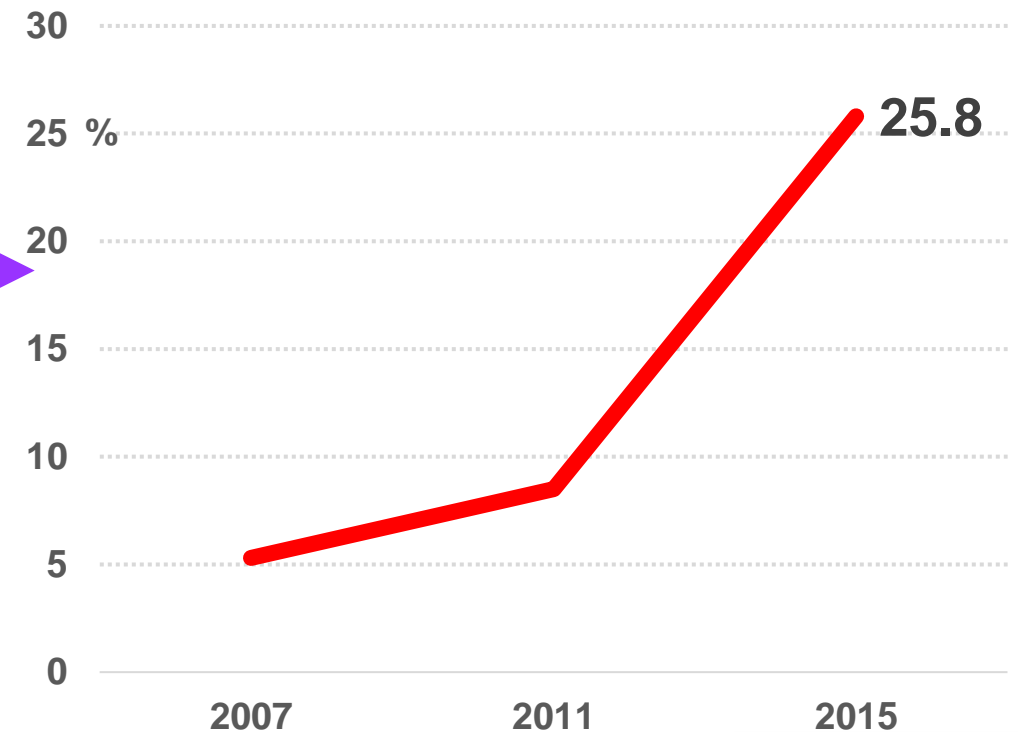
Interpreting data: Consider/triangulate with other data

What about condom use among MSM in country A?

% condom use at last sex among MSM
(3 comparable rounds of IBBS in country-A)



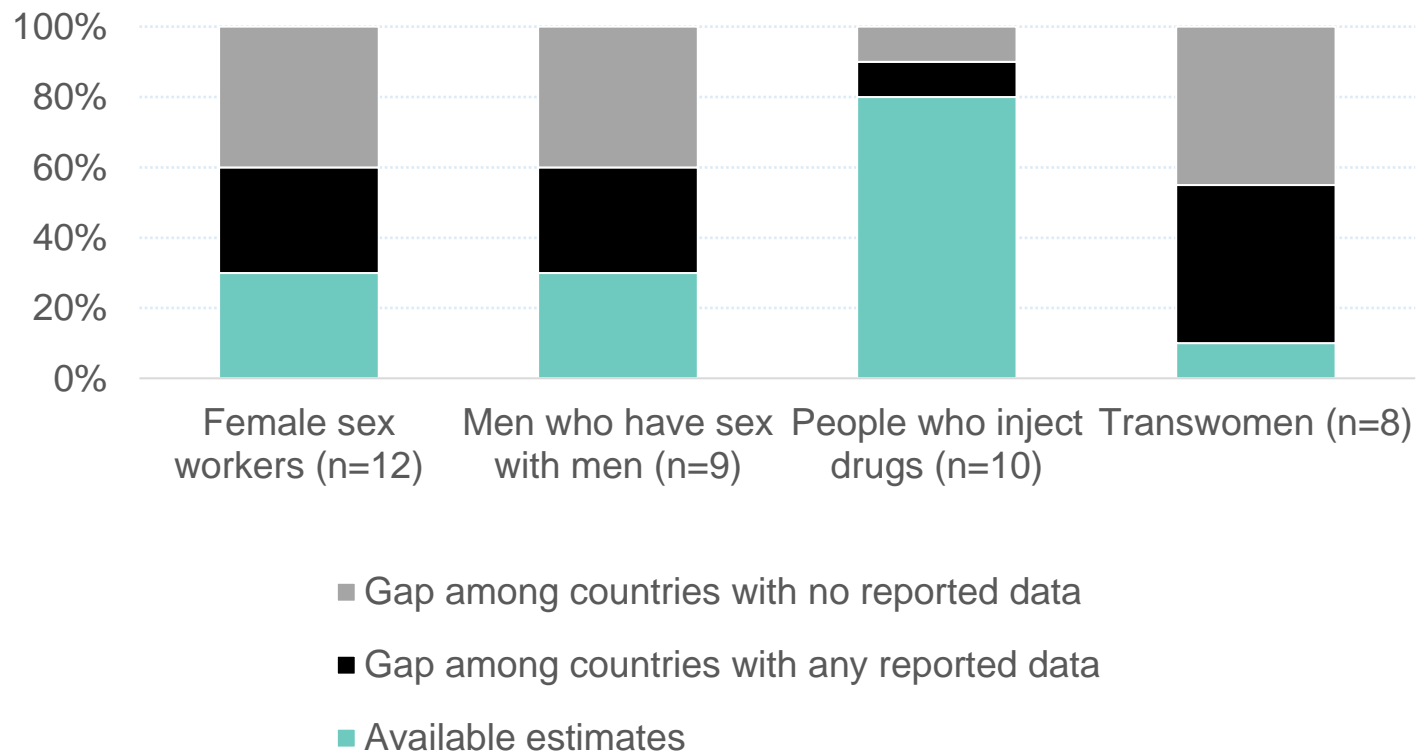
HIV prevalence among MSM
(3 comparable rounds of IBBS in country-A)



Interpreting data: Mind the data gap

Millions within key populations remain “INVISIBLE” and unaccounted for

Gap between country-reported key population size estimates and extrapolated sizes, Asia and the Pacific, 2020



Challenges ahead...

- Coordination challenges
- Data security and data use
- Data harmonization
- Data accessibility and transparency
- Ownership and reporting challenges
- Capacity and resources to keep up with changing needs and subsequent needs to modify/adapt the system at both national and sub-national levels

THANK YOU!

www.aidsdatahub.org



End Inequalities. End AIDS. Global AIDS Strategy 2021-2026

3 STRATEGIC PRIORITIES

STRATEGIC PRIORITY 1:

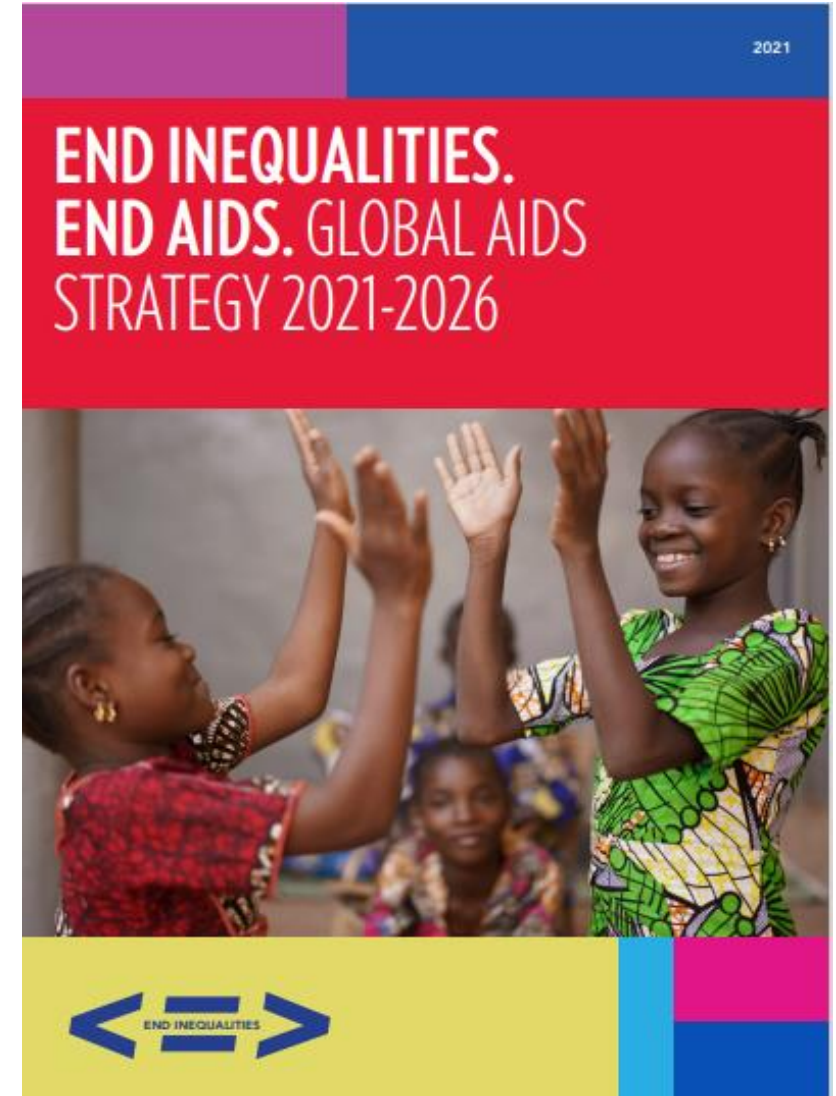
- Maximize equitable and equal access to HIV services and solutions

STRATEGIC PRIORITY 2:

- Break down barriers to achieving HIV outcomes

STRATEGIC PRIORITY 3:

- Fully resource and sustain efficient HIV responses and integrate them into systems for health, social protection, humanitarian settings and pandemic responses



End Inequalities. End AIDS. Global AIDS Strategy 2021-2026

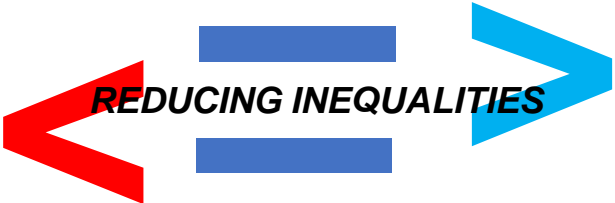
10%

LESS THAN 10%
of PLHIV and key populations
experience stigma and
discrimination

LESS THAN 10%
of PLHIV, women and girls and
key populations experiencing
gender-based inequalities and
gender-based violence

LESS THAN 10%
of countries have punitive laws
and policies

2025 HIV targets



*People living
with HIV
and communities
at risk
at the centre*

95%

95% of people at risk of HIV use
combination prevention

95-95-95% HIV testing, treatment &
viral suppression among adults and
children

95% of women access sexual and
reproductive health services

95% coverage of services for
eliminating vertical transmission

90% of PLHIV receive preventive
treatment for TB

90% of PLHIV and people at risk are
linked to other integrated health
services

Ambitious Targets and Commitments for 2025