

Cost-effectiveness analysis

Nalyn Siripong, East-West Center
October 28, 2010

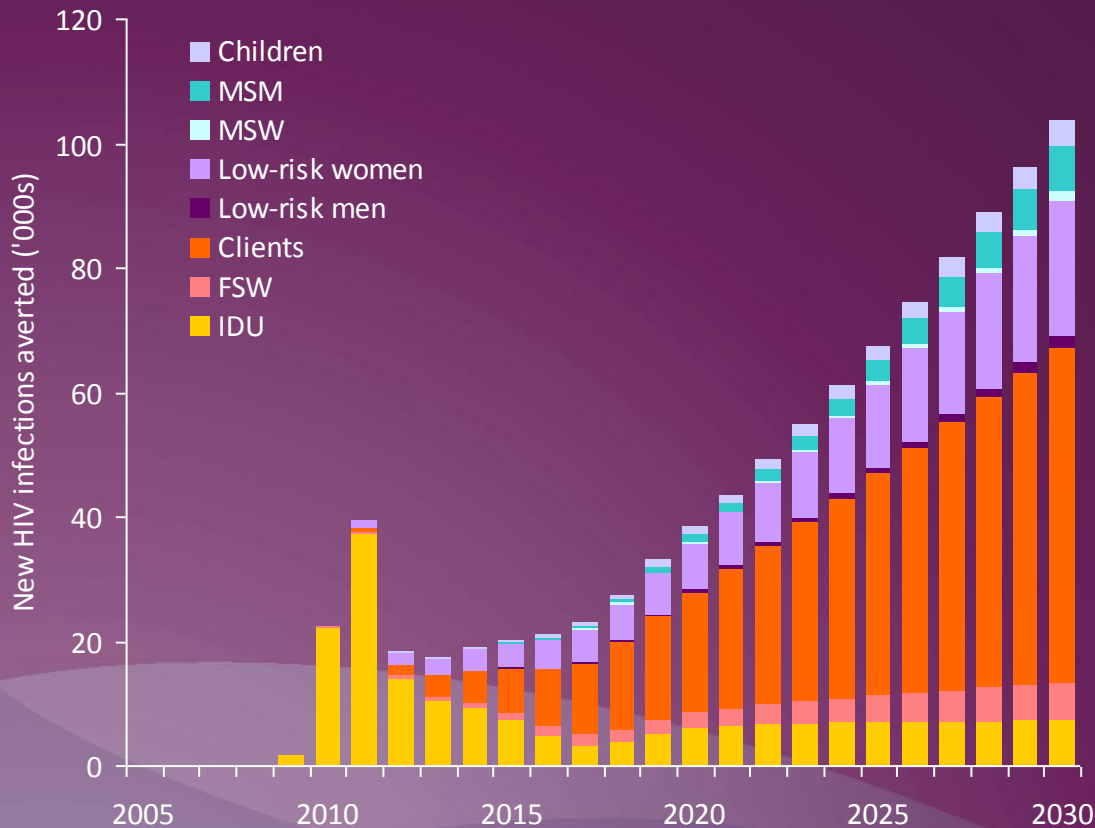


What is the goal of scenario building in HIV?

- To help decision makers understand the consequences of their actions and their impact on the HIV epidemic
- To provide them the information (costs, infections averted, approaches needed, etc.) to make decisions with maximum effects

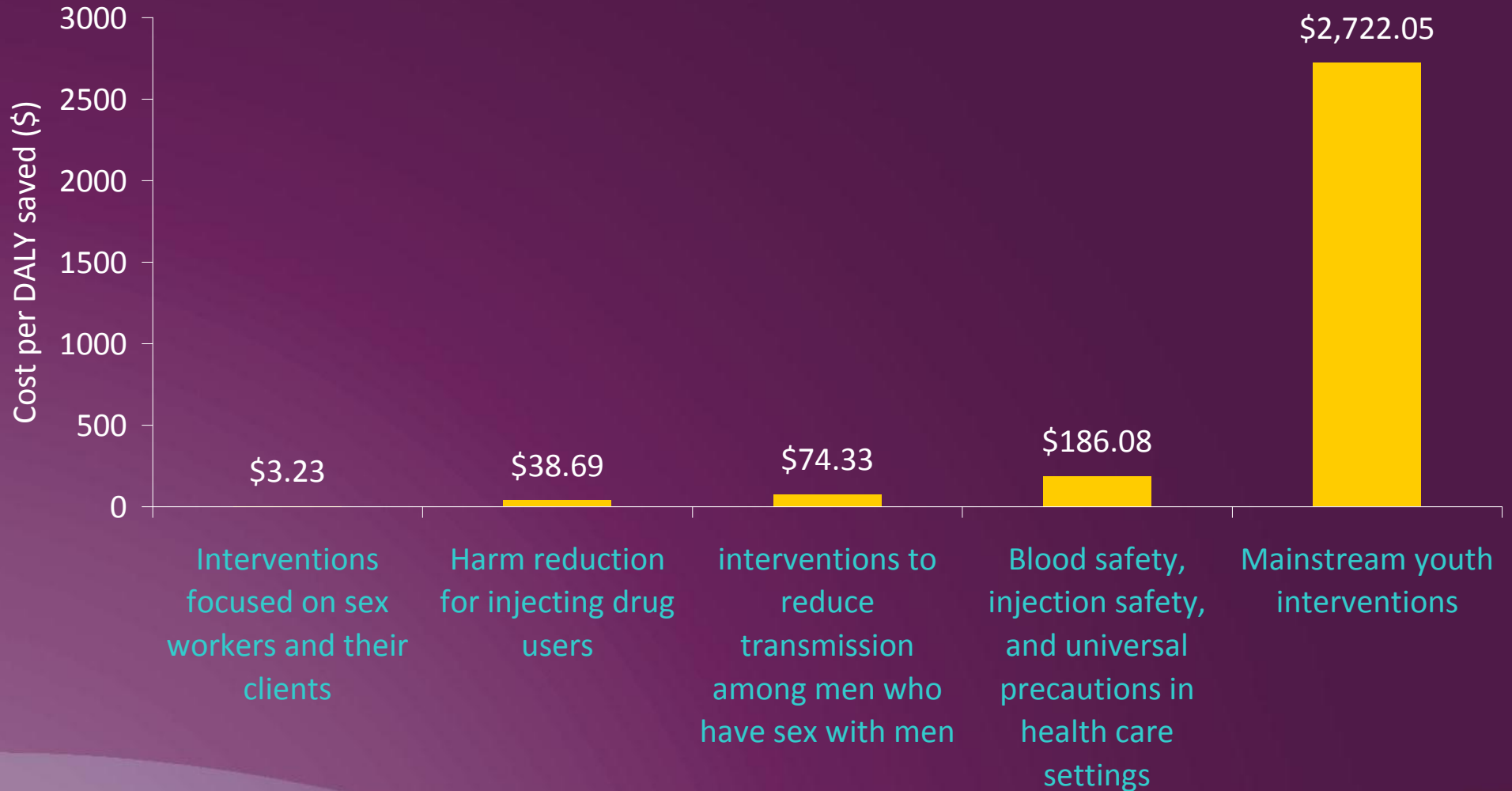
Broader impacts of targeted interventions:

Impacts of successful early harm reduction

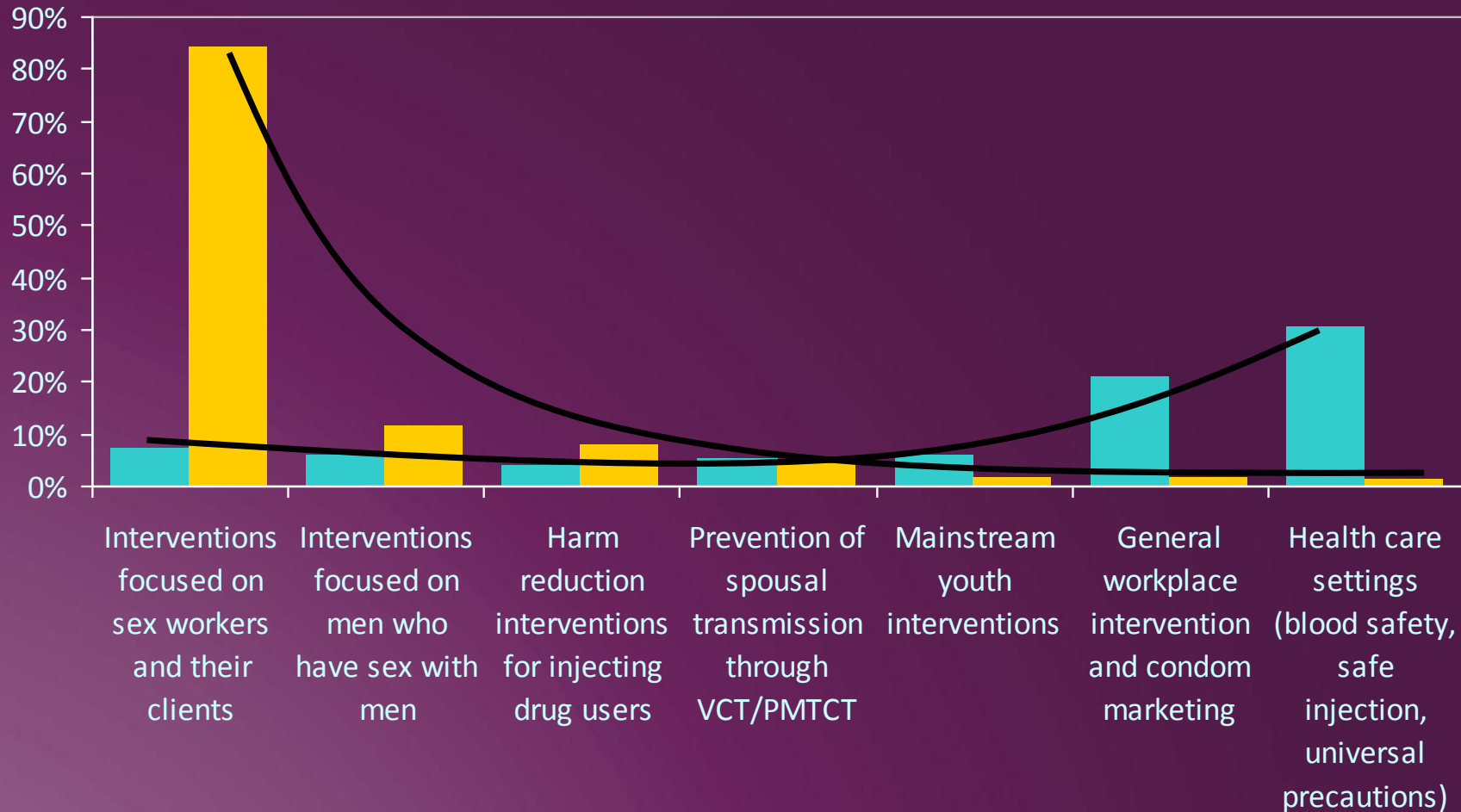


- 192,000 IDU infections
- 60,000 FSW infections
- 460,000 client infections
- 200,000 infections in low-risk adult populations
- 50,000 infections in MSM
- 30,000 infections in children

Costs per DALY saved



Resource needs versus infections averted



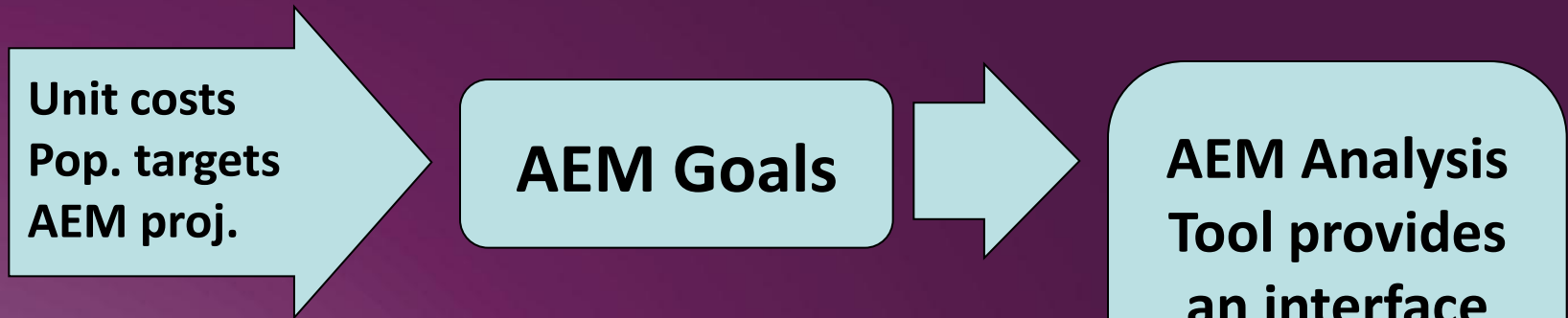
■ % of resources required ■ % of infections averted

Cost-effectiveness using AEM

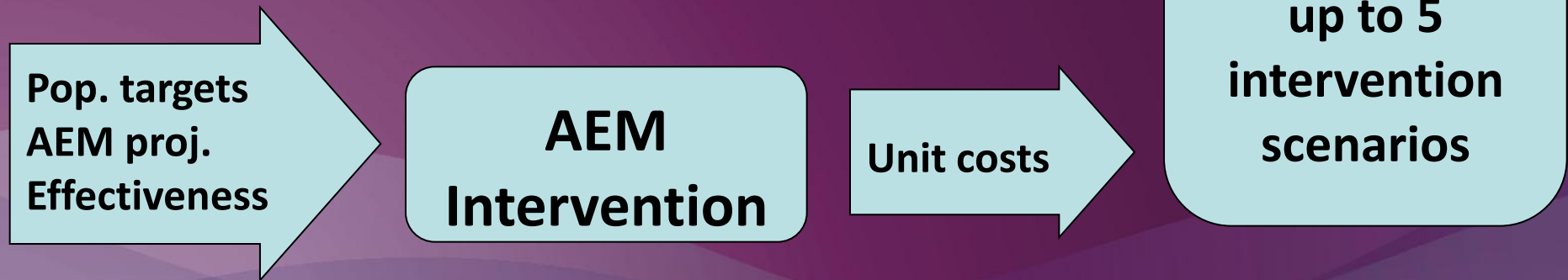


Currently Intervention Interfaces

AEM Goals



AEM-Goals



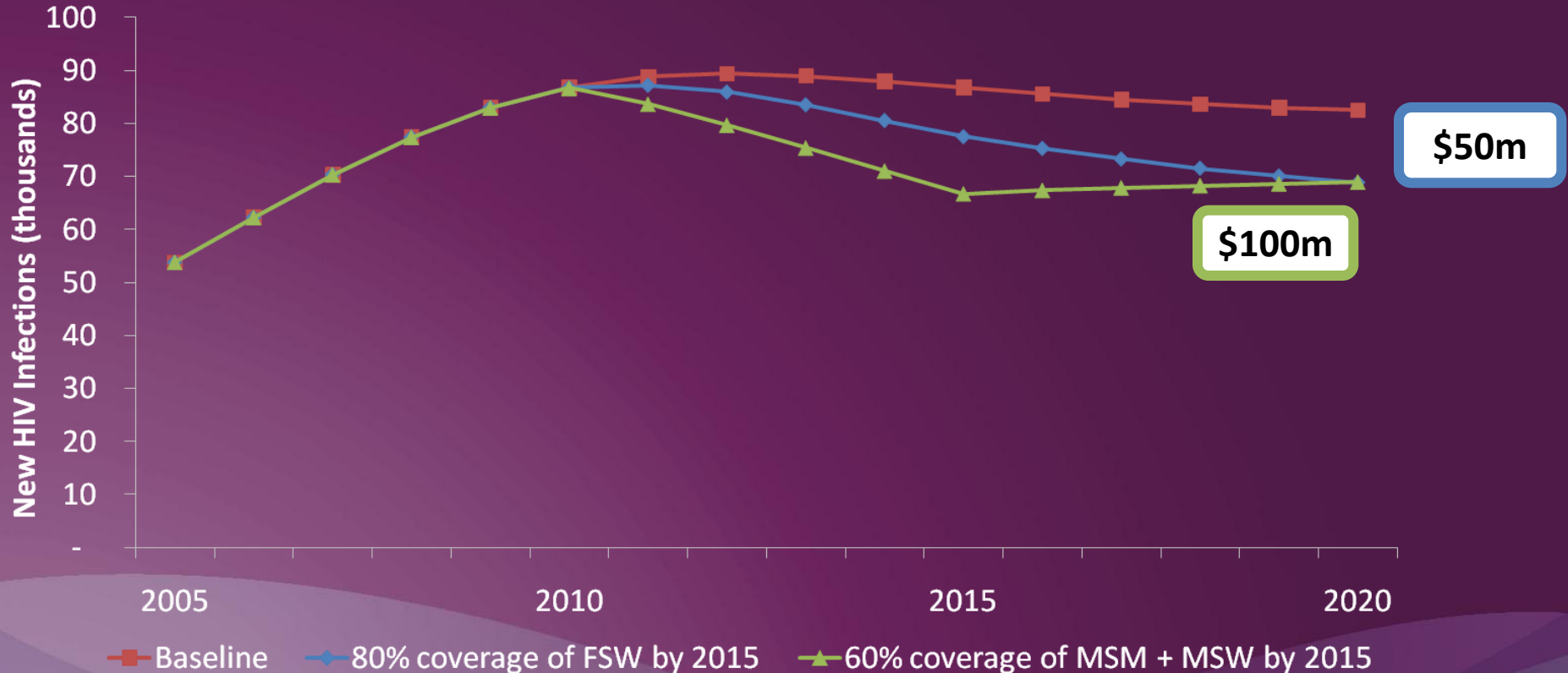
Required Elements-Intervention

- Start with a baseline AEM projection
- Evidence from a successful project or program:
 - Coverage of the target population
 - Behavior change and other quantitative measures of intervention effectiveness resulting from increased coverage
 - Unit cost per person reached in the target population

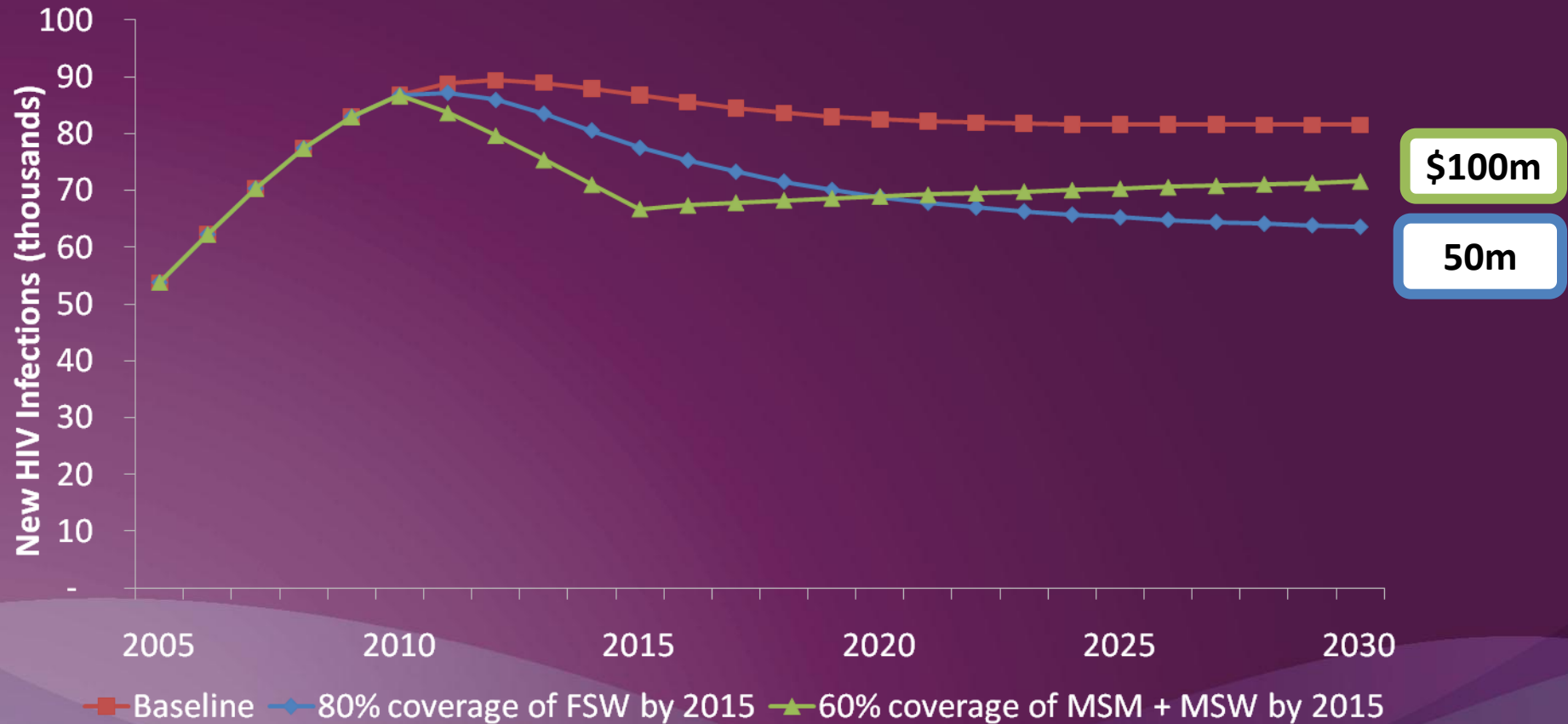
Example using the Intervention Tool

- Current baseline shows 60% condom use between FSW/clients and 30% condom use in MSM
- Two potential Scenarios for the period 2010-2015:
 - Increase coverage of FSW from 40% to 80% (condom use 60% to 78%)
 - Increase coverage of MSM from 10% to 60% (condom use rises from 30% to 61%)

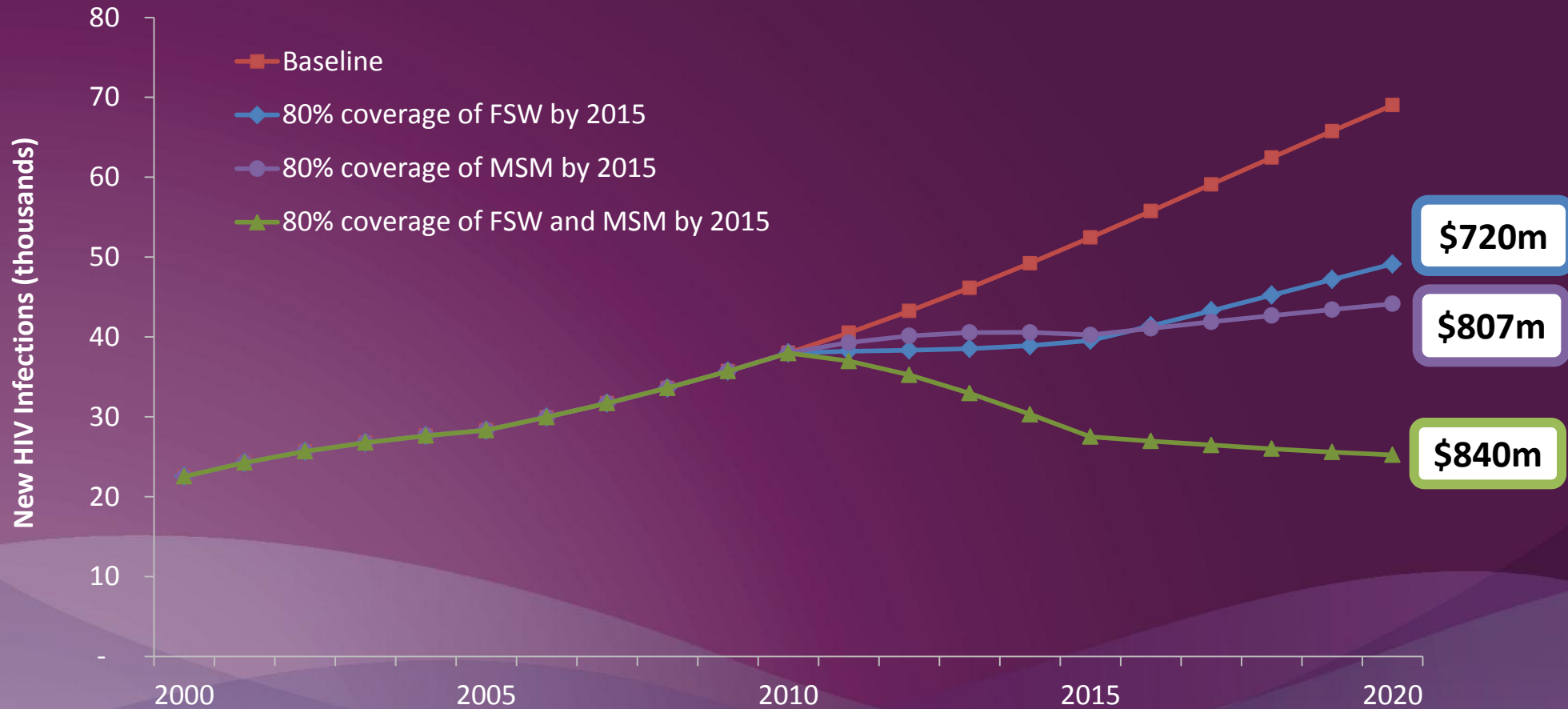
Comparing Scenarios (2010-2020)



Comparing Scenarios (2010-2030)



Comparing Scenarios



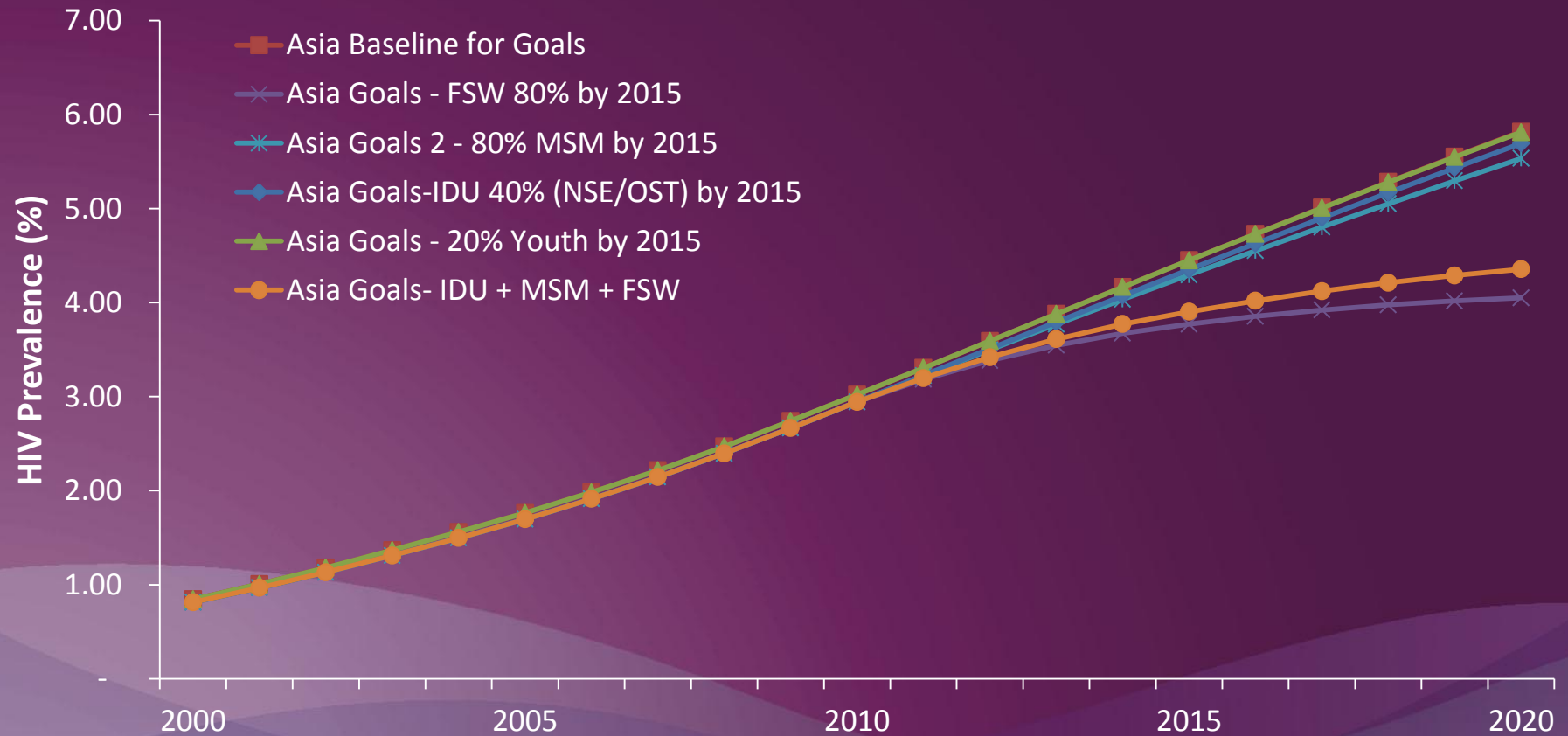
Required Elements-Goals

- Start with a baseline AEM projection
- Targets and costs based National Strategic Plans:
 - Population coverage targets
 - Unit costs for various interventions

Example using Goals

- A discussion on national planning has come up with 5 proposed approaches to addressing the response:
 - FSW-focus
 - MSM-focus
 - IDU-focus
 - Young people
 - Moderate combination of FSW, MSM and IDU

Comparing Goals Scenarios



**By comparing alternatives, we
can see the impact of programs
and their success or their failure**

STRATEGY RESULTS CYCLE

Formulate/Revise
HIV/AIDS Strategy

STRATEGIC PLAN PRIORITIZATION

Analyze HIV/AIDS and
National Response Data

Evaluate
Changes in
Outcomes

Identify Key National
Outcomes & Priorities

*Implementation
& process monitoring
(indicators, resource tracking)*

Select Interventions

Select Principal
Program Strategies

Resource Needs,
Funding