

BHUTAN

COUNTRY DATA

EPIDEMIC ESTIMATES

| | 2010 | 2015 | 2022 |
|--|----------------------|----------------------|----------------------|
| New HIV infections | | | |
| New HIV infections (all ages) | <100 [<100– <200] | <100 [<100– <100] | <100 [<100– <100] |
| New HIV infections (0–14) | ... [...–...] | ... [...–...] | ... [...–...] |
| New HIV infections (15–24) | <100 [<100– <100] | <100 [<100– <100] | <100 [<100– <100] |
| New HIV infections (women, 15+) | <100 [<100– <100] | <100 [<100– <100] | <100 [<100– <100] |
| New HIV infections (men, 15+) | <100 [<100– <100] | <100 [<100– <100] | <100 [<100– <100] |
| HIV incidence as new infections per 1000 uninfected population | 0.12 [0.09–0.15] | 0.09 [0.07–0.11] | 0.08 [0.06–0.1] |
| AIDS-related deaths | | | |
| AIDS-related deaths (all ages) | <100 [<100– <100] | <100 [<100– <100] | <100 [<100– <100] |
| AIDS-related deaths (0–14) | ... [...–...] | ... [...–...] | ... [...–...] |
| AIDS-related deaths (women, 15+) | <100 [<100– <100] | <100 [<100– <100] | <100 [<100– <100] |
| AIDS-related deaths (men, 15+) | <100 [<100– <100] | <100 [<100– <100] | <100 [<100– <100] |
| People living with HIV | | | |
| People living with HIV (all ages) | 960 [820–1100] | 980 [850–1100] | 1100 [960–1300] |
| People living with HIV (0–14) | ... [...–...] | ... [...–...] | ... [...–...] |
| People living with HIV (women, 15+) | <500 [<500– <500] | <500 [<500– <500] | <500 [<500–550] |
| People living with HIV (men, 15+) | 530 [<500–610] | 520 [<500–590] | 600 [500–700] |
| HIV prevalence (15–49) | 0.2 [0.2–0.2] | 0.2 [0.2–0.2] | 0.2 [0.2–0.2] |

LAWS AND POLICIES

| | |
|--|--|
| Laws criminalizing HIV non-disclosure, exposure or transmission | No, but prosecutions exist based on general criminal laws |
| Criminalization of sex work among consenting adults | Any criminalization or punitive regulation of sex work |
| Criminalization of same-sex sexual acts in private | No, laws penalizing consensual same-sex sexual acts have been decriminalized or have never existed anywhere in the country |
| Criminalization of possession of small amounts of drugs | ... |
| Criminalization of transgender people | No |
| Laws or policies restricting the entry, stay and residence of people living with HIV | No restrictions |
| Parental consent for adolescents to access HIV testing | ... |
| Spousal consent for married women to access sexual and reproductive health services | ... |
| Mandatory HIV testing for marriage, work or residence permits or for certain groups | No |

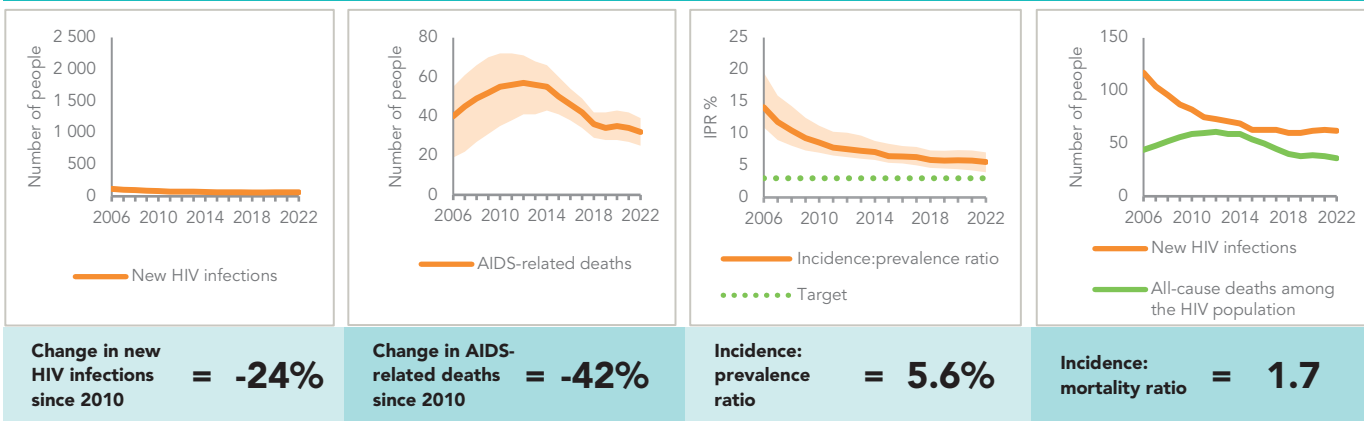
STIGMA AND DISCRIMINATION

| | |
|---|-----|
| Percentage of women and men aged 15–49 years who report discriminatory attitudes towards people living with HIV | ... |
| Percentage of people living with HIV who report experienced stigma and discrimination in the general community in the last 12 months | ... |
| Percentage of people living with HIV who report experiences of HIV-related discrimination in health-care settings in the last 12 months | ... |
| GENDER INEQUALITY AND VIOLENCE | |
| Proportion of ever-married or partnered women aged 15–49 years who experienced physical or sexual violence from a male intimate partner in the past 12 months | ... |
| Percentage of women and men aged 15 to 49 years who agree that a husband is justified in hitting or beating his wife for specific reasons | ... |

EXPENDITURES

| | Financing sources | | | | | Total |
|-----------------------------|-------------------|-----------------|-----------------------|----------------------------|---------------------------|--------------|
| | Domestic private | Domestic public | International: PEPFAR | International: Global Fund | International: all others | |
| Last available report: 2022 | US\$ 0 | US\$ 0 | US\$ 0 | US\$ 249 549 | US\$ 0 | US\$ 249 549 |

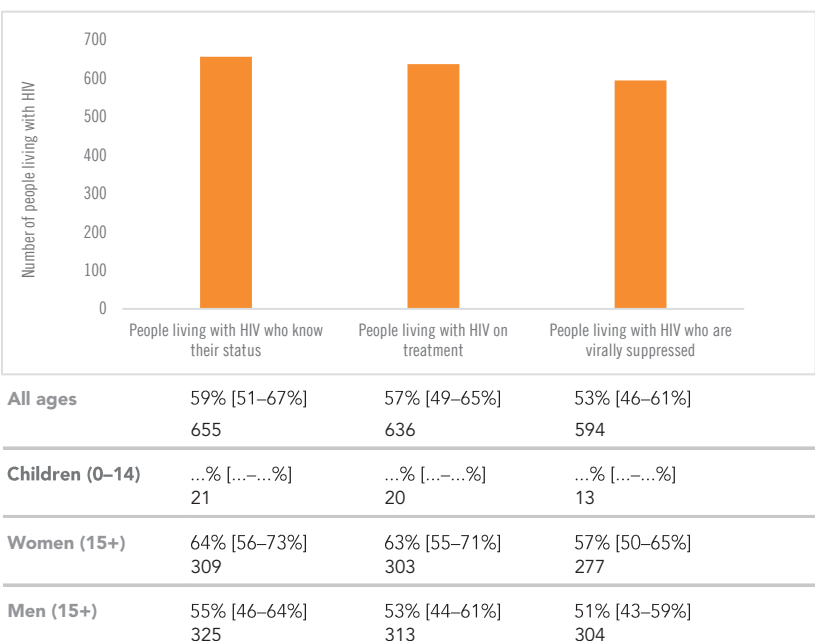
EPIDEMIC TRANSITION METRICS



KEY POPULATIONS

| | Sex workers | Men who have sex with men | People who inject drugs | Transgender people | Prisoners |
|---|-------------|---------------------------|-------------------------|--------------------|-----------|
| Estimated size of population | 600 | ... | ... | ... | ... |
| HIV prevalence | ... | ... | ... | ... | ... |
| HIV testing and status awareness | ... | ... | ... | ... | ... |
| Antiretroviral therapy coverage | ... | ... | ... | ... | ... |
| Condom use | ... | ... | ... | ... | ... |
| Coverage of HIV prevention programmes | ... | ... | ... | ... | ... |
| Avoidance of health care because of stigma and discrimination | ... | ... | ... | ... | ... |
| Experience of sexual and/or physical violence | ... | ... | ... | ... | ... |

HIV TESTING AND TREATMENT CASCADE



ELIMINATION OF VERTICAL TRANSMISSION

| | 2015 | 2022 |
|---|-----------------|-----------------|
| Percentage of pregnant women living with HIV accessing antiretroviral medicines | ...% [...–...%] | ...% [...–...%] |
| Final vertical transmission rate including during breastfeeding | ...% [...–...%] | ...% [...–...%] |
| Early infant diagnosis | ...% [...–...%] | ...% [...–...%] |

HIV COMORBIDITIES

| | |
|---|----------|
| Estimated number of incident tuberculosis cases among people living with HIV (2021) | 4 [1–12] |
| People living with HIV who started TB preventive therapy (2021) | ... |
| Cervical cancer screening of women living with HIV | ... |
| People coinfectd with HIV and hepatitis C virus starting hepatitis C treatment | ... |

HIV PREVENTION

| | |
|---|----------------|
| Adults aged 15+ years with unsuppressed viral load | <0.1% |
| Knowledge of HIV prevention among young people aged 15–24 years | ... |
| — Women | ... |
| — Men | ... |
| Condom use at last sex with a non-marital, non-cohabiting partner among people aged 15–49 years | ... |
| — Women | ... |
| — Men | ... |
| Women aged 15–49 years who have their demand for family planning satisfied by modern methods | ... |
| Men aged 15–49 years who are circumcised | Not applicable |
| Voluntary medical male circumcisions performed according to national standards | Not applicable |
| People who received PrEP at least once during the reporting period | ... |
| Harm reduction | |
| — Use of sterile injecting equipment at last injection | ... |
| — Needles and syringes distributed per person who injects | ... |
| — Coverage of opioid substitution therapy | ... |
| — Naloxone available (2023) | ... |