

Tuberculosis profile: Bangladesh

Population 2021: 169 million

Estimates of TB burden*, 2021

	Number	(Rate per 100 000 population)
Total TB incidence	375 000 (273 000-493 000)	221 (161-291)
HIV-positive TB incidence	730 (370-1 200)	0.43 (0.22-0.71)
MDR/RR-TB incidence**	4 500 (1 500-7 600)	2.7 (0.86-4.5)
HIV-negative TB mortality	42 000 (28 000-60 000)	25 (17-35)
HIV-positive TB mortality	170 (110-240)	0.1 (0.07-0.14)

Estimated proportion of TB cases with MDR/RR-TB*, 2021

New cases	1% (0.53-1.8)
Previously treated cases	4.8% (4.4-5.2)

Universal health coverage and social protection*

TB treatment coverage (notified/estimated incidence), 2021	82% (62-110)
TB patients facing catastrophic total costs	
TB case fatality ratio (estimated mortality/estimated incidence), 2021	12% (7-18)

TB case notifications, 2021

Total new and relapse	306 701
- % tested with rapid diagnostics at time of diagnosis	24%
- % with known HIV status	6.4%
- % pulmonary	81%
- % bacteriologically confirmed [^]	80%
- % children aged 0-14 years	3%
- % women (aged ≥15 years)	44%
- % men (aged ≥15 years)	53%
Total cases notified	307 561

TB/HIV care in new and relapse TB patients, 2021

	Number	(%)
Patients with known HIV status who are HIV-positive	106	0.54%
- on antiretroviral therapy	102	96%

Drug-resistant TB care**, 2021

% of bacteriologically confirmed TB cases tested for rifampicin resistance - New cases [^]	44%
% of bacteriologically confirmed TB cases tested for rifampicin resistance - Previously treated cases [^]	97%
Laboratory-confirmed cases - MDR/RR-TB ^{^^}	1 601
Patients started on treatment - MDR/RR-TB ^{^^^}	1 488
Laboratory-confirmed cases - pre-XDR-TB or XDR-TB ^{^^}	106
Patients started on treatment - pre-XDR-TB or XDR-TB ^{^^^}	104
MDR/RR-TB cases tested for resistance to any fluoroquinolone	652

Treatment success rate and cohort size

	Success	Cohort
New and relapse cases registered in 2020	95%	228 779
Previously treated cases, excluding relapse, registered in 2020	89%	799
HIV-positive TB cases registered in 2020	76%	84
MDR/RR-TB cases started on second-line treatment in 2019	74%	1 235
Pre-XDR-TB/XDR-TB cases started on second-line treatment in 2019	86%	7

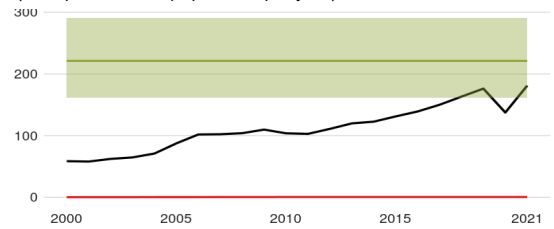
TB preventive treatment, 2021

% of HIV-positive people (newly enrolled in care) on preventive treatment	
% of children (aged < 5 years) household contacts of bacteriologically-confirmed TB cases on preventive treatment	38% (35-41)

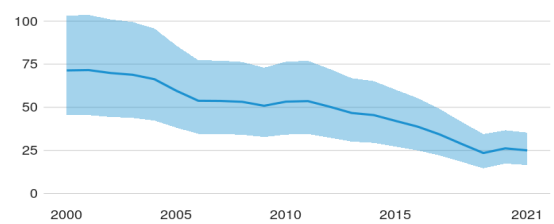
Funding for TB

Funding for TB, 2021 (US\$ millions)	72
- % domestic funding	30%
- % international funding	70%

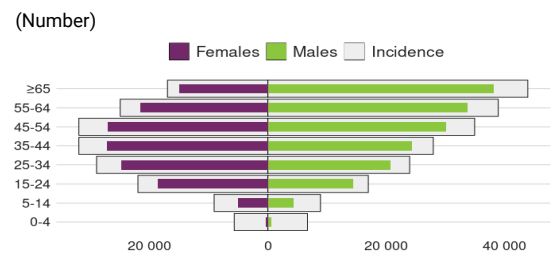
Incidence, New and relapse TB cases notified, HIV-positive TB incidence (Rate per 100 000 population per year)



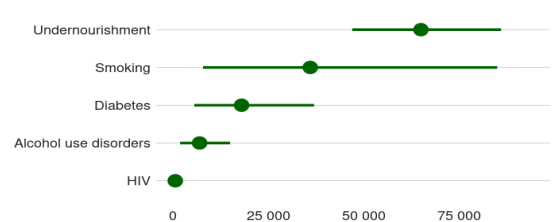
HIV-negative TB mortality (Rate per 100 000 population per year)



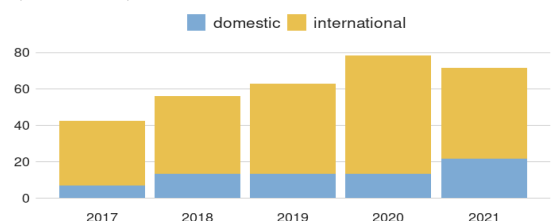
Incidence, Notified cases by age group and sex, 2021 (Number)



Cases attributable to five risk factors, 2021 (Number)



Funding for TB (US\$ millions)



* Estimates of TB burden are produced by WHO in consultation with countries. Ranges represent uncertainty intervals.
** RR is TB resistant to rifampicin (R), MDR is TB resistant to R + isoniazid; pre-XDR is TB resistant to R + any fluoroquinolone
^ Calculated for pulmonary cases only
^^ Includes cases with unknown previous TB treatment history
^^^ Includes patients diagnosed before 2021 and patients who were not laboratory-confirmed

Generated 2022-11-28 by the World Health Organization (<https://www.who.int/teams/global-tuberculosis-programme/data>)