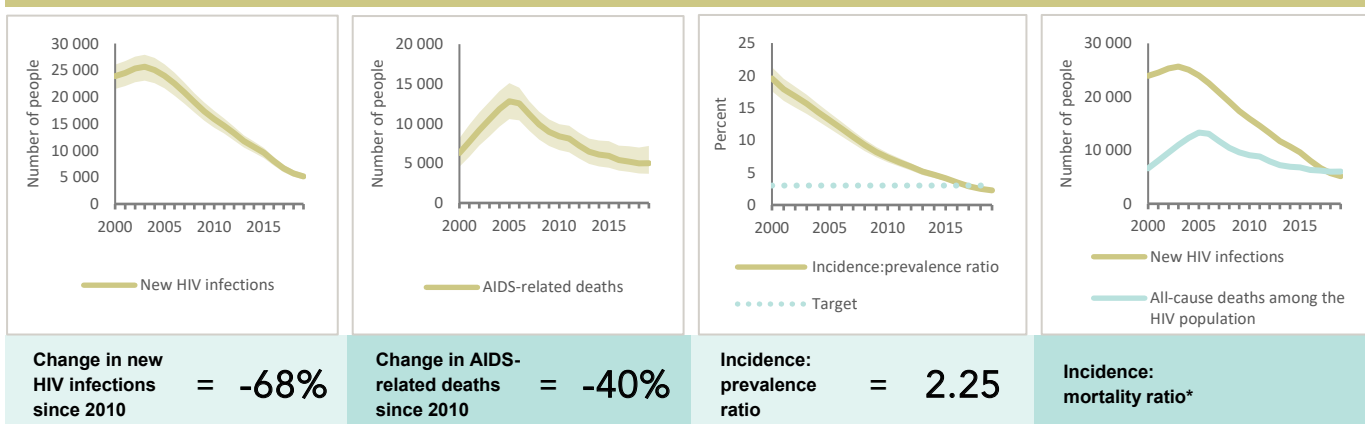


VIET NAM

EPIDEMIC ESTIMATES

	2010	2015	2019
New HIV infections			
New HIV infections (all ages)	16 000 [14 000–17 000]	9600 [8600–11 000]	5200 [4600–5700]
New HIV infections (0–14)	620 [<500–820]	500 [<500–650]	<500 [<200– <500]
New HIV infections (women, 15+)	4500 [3900–5100]	2700 [2300–3000]	1400 [1200–1600]
New HIV infections (men, 15+)	11 000 [9600–12 000]	6400 [5700–7000]	3400 [3100–3800]
HIV incidence per 1000 population	0.18 [0.16–0.2]	0.11 [0.09–0.12]	0.05 [0.05–0.06]
AIDS-related deaths			
AIDS-related deaths (all ages)	8400 [6600–9900]	5900 [4500–7800]	5000 [3700–7200]
AIDS-related deaths (0–14)	<500 [<500– <500]	<200 [<200– <500]	<200 [<100– <500]
AIDS-related deaths (women, 15+)	2900 [2200–3400]	1500 [1100–2100]	990 [680–1500]
AIDS-related deaths (men, 15+)	5200 [4000–6100]	4200 [3200–5400]	3900 [2900–5500]
People living with HIV			
People living with HIV (all ages)	220 000 [190 000–250 000]	230 000 [200 000–260 000]	230 000 [200 000–260 000]
People living with HIV (0–14)	5000 [4200–6000]	5700 [4800–6700]	5200 [4400–6400]
People living with HIV (women, 15+)	61 000 [53 000–71 000]	68 000 [60 000–77 000]	70 000 [62 000–79 000]
People living with HIV (men, 15+)	150 000 [130 000–180 000]	160 000 [140 000–180 000]	150 000 [130 000–170 000]
HIV prevalence (15–49)	0.4 [0.3–0.4]	0.4 [0.3–0.4]	0.3 [0.3–0.4]

EPIDEMIC TRANSITION METRICS



* The incidence:mortality ratio is not published if the country has not achieved antiretroviral therapy coverage of 81% or higher (the testing and treatment target for 2020).

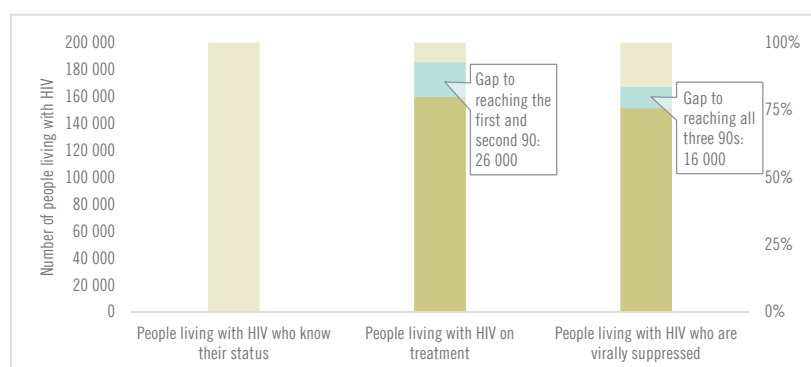
EXPENDITURES

	Financing sources					Total
	Domestic private	Domestic public	International: PEPFAR	International: Global Fund	International: all others	
Last available report: 2012	...	US\$ 30 327 094	US\$ 28 917 091	US\$ 19 495 015	US\$ 14 805 388	US\$ 95 446 487

Note: Global AIDS Monitoring report was not available at the time of publication.

COUNTRY DATA

HIV TESTING AND TREATMENT CASCADE



All ages	...% [...-...%]	70% [61–79%] 159 664	66% [58–75%]
Children (0–14)	...% [...-...%]	85% [71–100%] 4 461	77% [64–93%]
Women (15+)	...% [...-...%]	77% [68–87%] 54 211	74% [65–83%]
Men (15+)	...% [...-...%]	66% [57–74%] 100 992	62% [54–71%]

ELIMINATION OF MOTHER-TO-CHILD TRANSMISSION

	2010	2019
Percentage of pregnant women living with HIV accessing antiretroviral medicines	45% [37–54%]	86% [74–100%]
Final vertical transmission rate including during breastfeeding	20% [17–22%]	12% [9–15%]
Early infant diagnosis	...% [...-...%]	46.4% [39.8–54.1%]