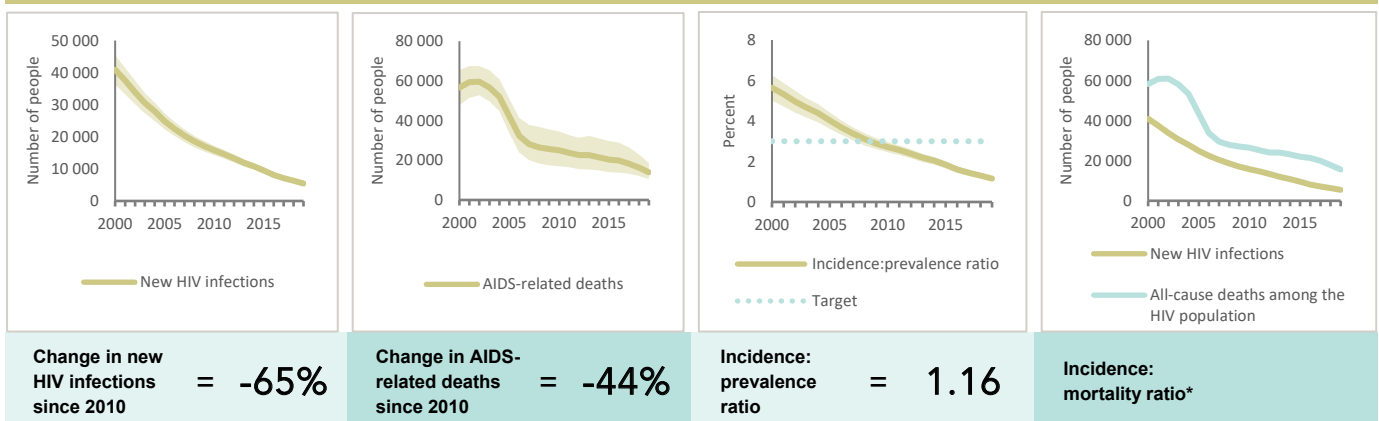


THAILAND

EPIDEMIC ESTIMATES

	2010	2015	2019
New HIV infections			
New HIV infections (all ages)	16 000 [14 000–17 000]	9500 [8600–10 000]	5400 [4900–6000]
New HIV infections (0–14)	560 [<500–670]	<100 [<100– <200]	<100 [<100– <100]
New HIV infections (women, 15+)	5300 [4600–5900]	2700 [2400–3000]	1600 [1400–1800]
New HIV infections (men, 15+)	9900 [8800–11 000]	6700 [6000–7400]	3800 [3400–4200]
HIV incidence per 1000 population	0.24 [0.22–0.26]	0.14 [0.13–0.15]	0.08 [0.07–0.09]
AIDS-related deaths			
AIDS-related deaths (all ages)	25 000 [17 000–34 000]	20 000 [14 000–30 000]	14 000 [10 000–19 000]
AIDS-related deaths (0–14)	660 [550–770]	<500 [<500– <500]	<200 [<200– <200]
AIDS-related deaths (women, 15+)	8300 [5800–11 000]	8100 [5200–12 000]	6400 [4900–9300]
AIDS-related deaths (men, 15+)	16 000 [10 000–23 000]	12 000 [8300–17 000]	7400 [5500–9600]
People living with HIV			
People living with HIV (all ages)	580 000 [490 000–700 000]	520 000 [450 000–610 000]	470 000 [410 000–540 000]
People living with HIV (0–14)	11 000 [9600–13 000]	6700 [5600–7900]	3300 [2800–4000]
People living with HIV (women, 15+)	250 000 [220 000–300 000]	230 000 [200 000–270 000]	210 000 [180 000–240 000]
People living with HIV (men, 15+)	320 000 [270 000–390 000]	280 000 [250 000–330 000]	260 000 [230 000–300 000]
HIV prevalence (15–49)	1.5 [1.2–1.8]	1.3 [1.1–1.5]	1 [0.8–1.2]

EPIDEMIC TRANSITION METRICS



* The incidence:mortality ratio is not published if the country has not achieved antiretroviral therapy coverage of 81% or higher (the testing and treatment target for 2020).

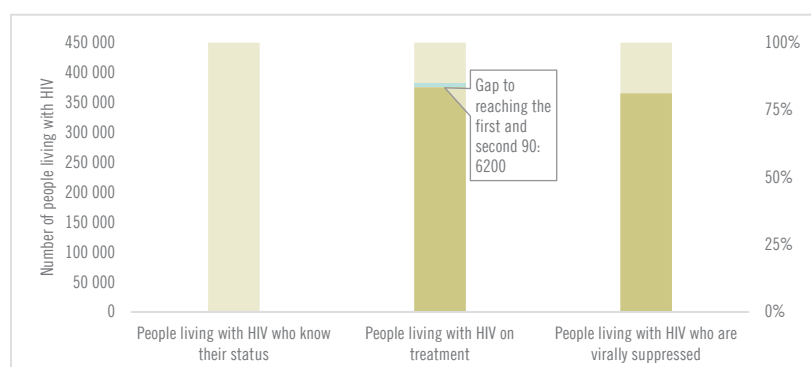
EXPENDITURES

	Financing sources					Total
	Domestic private	Domestic public	International: PEPFAR	International: Global Fund	International: all others	
Last available report: 2019	US\$ 255 509	US\$ 271 162 577	US\$ 11 451 383	US\$ 7 142 318	US\$ 5 297 711	US\$ 295 888 256

Note: Global AIDS Monitoring report was not available at the time of publication.

COUNTRY DATA

HIV TESTING AND TREATMENT CASCADE



All ages	...% [...-...%]	80% [70–91%] 375 332	78% [68–89%]
Children (0–14)	...% [...-...%]	66% [55–78%] 2 193	58% [49–69%]
Women (15+)	...% [...-...%]	80% [69–92%] 166 269	78% [68–89%]
Men (15+)	...% [...-...%]	79% [70–91%] 206 870	77% [68–89%]

ELIMINATION OF MOTHER-TO-CHILD TRANSMISSION

	2010	2019
Percentage of pregnant women living with HIV accessing antiretroviral medicines	94% [78–100%]	97% [81–100%]
Final vertical transmission rate including during breastfeeding	7% [6–8%]	2% [2–2%]
Early infant diagnosis	45.3% [38.5–54.9%]	94.3% [80.1– >95%]