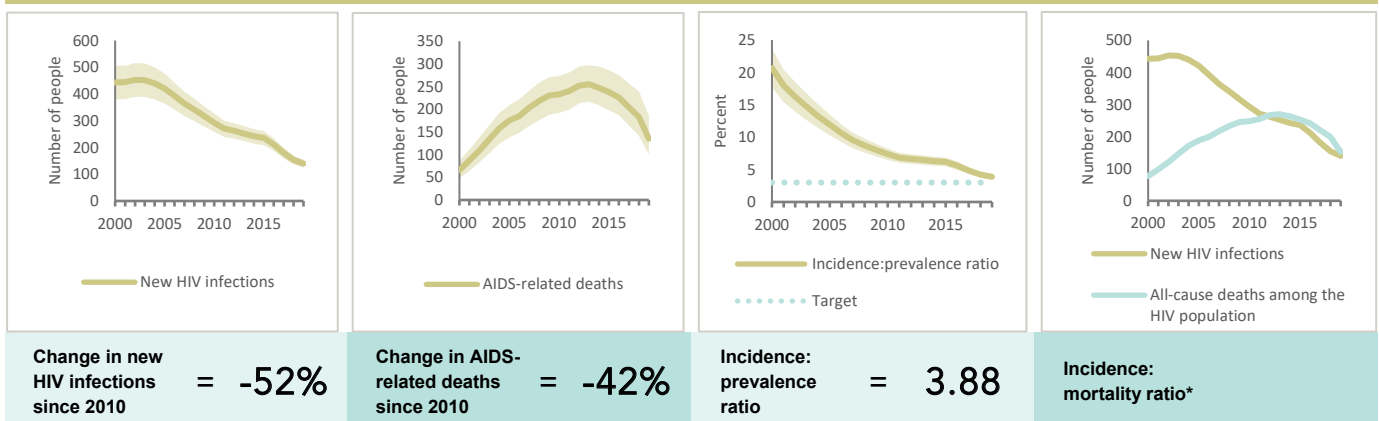


SRI LANKA

EPIDEMIC ESTIMATES

	2010	2015	2019
New HIV infections			
New HIV infections (all ages)	<500 [<500– <500]	<500 [<500– <500]	<200 [<200– <200]
New HIV infections (0–14)	... [...–...]	... [...–...]	... [...–...]
New HIV infections (women, 15+)	<100 [<100– <100]	<100 [<100– <100]	<100 [<100– <100]
New HIV infections (men, 15+)	<200 [<200– <500]	<200 [<200– <200]	<200 [<100– <200]
HIV incidence per 1000 population	0.01 [0.01–0.02]	0.01 [0.01–0.01]	<0.01 [<0.01– <0.01]
AIDS-related deaths			
AIDS-related deaths (all ages)	<500 [<200– <500]	<500 [<200– <500]	<200 [<200– <200]
AIDS-related deaths (0–14)	... [...–...]	... [...–...]	... [...–...]
AIDS-related deaths (women, 15+)	<100 [<100– <100]	<100 [<100– <100]	<100 [<100– <100]
AIDS-related deaths (men, 15+)	<200 [<200– <500]	<200 [<200– <500]	<100 [<100– <200]
People living with HIV			
People living with HIV (all ages)	4000 [3400–4800]	3800 [3200–4500]	3600 [3200–4200]
People living with HIV (0–14)	... [...–...]	... [...–...]	... [...–...]
People living with HIV (women, 15+)	1100 [930–1300]	1100 [940–1300]	1000 [890–1200]
People living with HIV (men, 15+)	2800 [2400–3400]	2700 [2300–3200]	2500 [2200–3000]
HIV prevalence (15–49)	<0.1 [<0.1– <0.1]	<0.1 [<0.1– <0.1]	<0.1 [<0.1– <0.1]

EPIDEMIC TRANSITION METRICS



* The incidence:mortality ratio is not published if the country has not achieved antiretroviral therapy coverage of 81% or higher (the testing and treatment target for 2020).

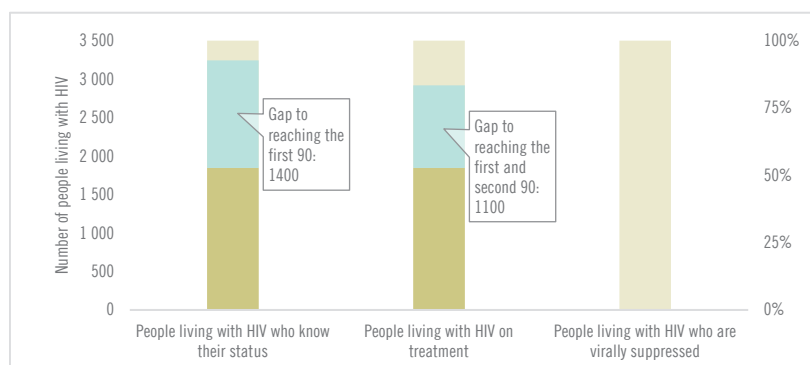
EXPENDITURES

	Financing sources					Total
	Domestic private	Domestic public	International: PEPFAR	International: Global Fund	International: all others	
Last available report: 2019	US\$ 0	US\$ 2 743 563	US\$ 1 606 380	US\$ 0	US\$ 0	US\$ 4 349 943

Note: Global AIDS Monitoring report was not available at the time of publication.

COUNTRY DATA

HIV TESTING AND TREATMENT CASCADE



All ages	51% [45–60%]	51% [45–60%] 1 846	...% [...-...%]
Children (0–14)	...% [...-...%]	...% [...-...%]% [...-...%]
Women (15+)	50% [44–58%]	50% [44–58%] 511	...% [...-...%]
Men (15+)	51% [45–60%]	51% [45–60%] 1 293	...% [...-...%]

ELIMINATION OF MOTHER-TO-CHILD TRANSMISSION

	2010	2019
Percentage of pregnant women living with HIV accessing antiretroviral medicines	...% [...-...%]	...% [...-...%]
Final vertical transmission rate including during breastfeeding	...% [...-...%]	...% [...-...%]
Early infant diagnosis	...% [...-...%]	...% [...-...%]