

MONGOLIA

COUNTRY DATA

EPIDEMIC ESTIMATES

| | 2010 | 2015 | 2019 |
|-------------------------------------|----------------------|----------------------|----------------------|
| New HIV infections | | | |
| New HIV infections (all ages) | <100 [<100– <100] | <100 [<100– <100] | <100 [<100– <100] |
| New HIV infections (0–14) | ... [...–...] | ... [...–...] | ... [...–...] |
| New HIV infections (women, 15+) | <100 [<100– <100] | <100 [<100– <100] | <100 [<100– <100] |
| New HIV infections (men, 15+) | <100 [<100– <100] | <100 [<100– <100] | <100 [<100– <100] |
| HIV incidence per 1000 population | 0.02 [0.02–0.02] | 0.02 [0.01–0.02] | 0.01 [0.01–0.01] |
| AIDS-related deaths | | | |
| AIDS-related deaths (all ages) | <100 [<100– <100] | <100 [<100– <100] | <100 [<100– <100] |
| AIDS-related deaths (0–14) | ... [...–...] | ... [...–...] | ... [...–...] |
| AIDS-related deaths (women, 15+) | <100 [<100– <100] | <100 [<100– <100] | <100 [<100– <100] |
| AIDS-related deaths (men, 15+) | <100 [<100– <100] | <100 [<100– <100] | <100 [<100– <100] |
| People living with HIV | | | |
| People living with HIV (all ages) | 390 [<500– <500] | 540 [<500–610] | 620 [560–700] |
| People living with HIV (0–14) | ... [...–...] | ... [...–...] | ... [...–...] |
| People living with HIV (women, 15+) | <100 [<100– <100] | <100 [<100– <200] | <200 [<200– <200] |
| People living with HIV (men, 15+) | <500 [<500– <500] | <500 [<500–500] | <500 [<500–560] |
| HIV prevalence (15–49) | <0.1 [<0.1– <0.1] | <0.1 [<0.1– <0.1] | <0.1 [<0.1– <0.1] |

LAWS AND POLICIES

| | |
|---|--|
| Laws criminalizing the transmission of, non-disclosure of or exposure to HIV transmission | Yes |
| Criminalization of sex work among consenting adults | Any criminalization or punitive regulation of sex work |
| Criminalization of same-sex sexual acts | Laws penalizing same-sex sexual acts have been decriminalized or never existed |
| Drug use or possession for personal use is an offence | Compulsory detention for drug offences |
| Criminalization of transgender people | Neither criminalized nor prosecuted |
| Laws or policies restricting the entry, stay and residence of people living with HIV | No |
| Parental consent for adolescents to access HIV testing | Yes, for adolescents younger than 18 years |
| Spousal consent for married women to access sexual and reproductive health services | No |
| Mandatory HIV testing for marriage, work or residence permits or for certain groups | Yes |

STIGMA AND DISCRIMINATION

| | | |
|--|------|------|
| Percentage of women and men aged 15–49 years who report discriminatory attitudes towards people living with HIV (2018 refers to women only) | 2014 | 2018 |
| | 72.7 | 64.2 |

Percentage of people living with HIV denied health services because of their HIV status in the last 12 months

Percentage of people living with HIV who reported a health-care professional told others about their HIV status without their consent

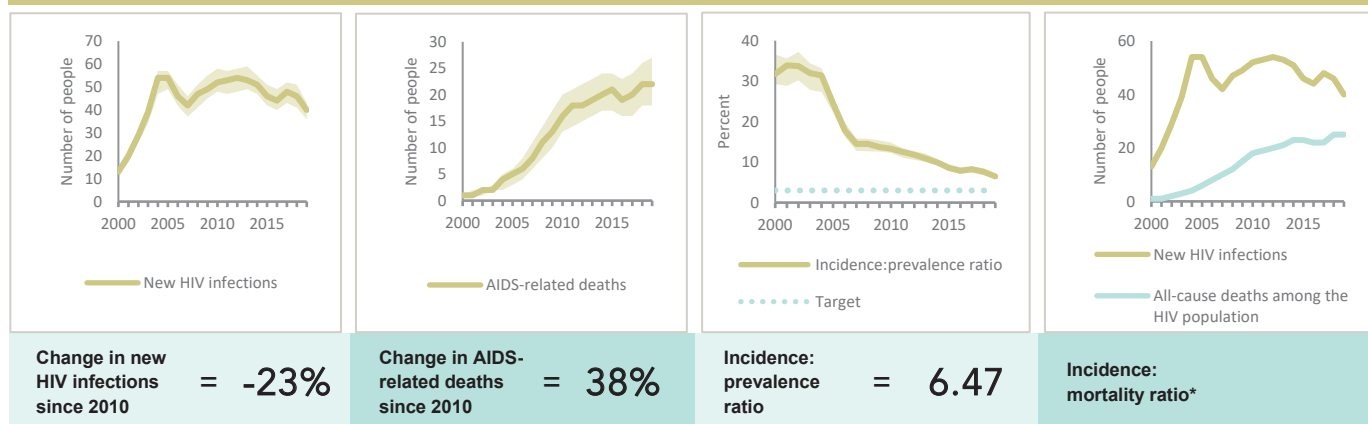
VIOLENCE

| | |
|---|------|
| Proportion of ever-married or partnered women aged 15–49 years who experienced physical or sexual violence from a male intimate partner in the past 12 months | 2017 |
| | 14.7 |

EXPENDITURES

| | Financing sources | | | | | Total |
|-----------------------------|-------------------|-----------------|-----------------------|----------------------------|---------------------------|----------------|
| | Domestic private | Domestic public | International: PEPFAR | International: Global Fund | International: all others | |
| Last available report: 2019 | US\$ 0 | US\$ 922 160 | US\$ 0 | US\$ 977 931 | US\$ 96 000 | US\$ 1 996 091 |

EPIDEMIC TRANSITION METRICS

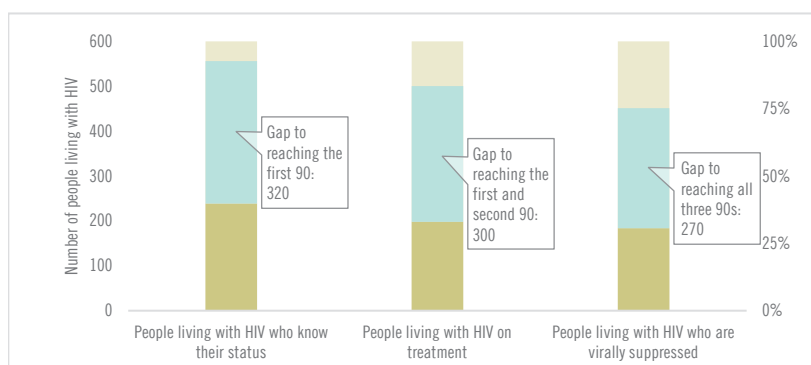


* The incidence:mortality ratio is not published if the country has not achieved antiretroviral therapy coverage of 81% or higher (the testing and treatment target for 2020).

KEY POPULATIONS

| | Sex workers | Men who have sex with men | People who inject drugs | Transgender people | Prisoners |
|---|-------------|---------------------------|-------------------------|--------------------|-----------|
| Estimated size of population | ... | ... | ... | ... | ... |
| HIV prevalence | 0% | 7.7% | ... | ... | 0% |
| HIV testing and status awareness | 68.7% | 80.8% | ... | ... | ... |
| Antiretroviral therapy coverage | ... | 90.6% | ... | ... | ... |
| Condom use | 89.4% | ... | ... | ... | ... |
| Coverage of HIV prevention programmes | ... | 26.1% | ... | ... | ... |
| Avoidance of health care because of stigma and discrimination | 39.7% | 47.1% | ... | ... | ... |
| Expenditures in US\$ (2019) | 300 000 | 500 000 | ... | ... | ... |

HIV TESTING AND TREATMENT CASCADE



| | 39% [35–44%] | 32% [29–36%] 198 | 30% [27–34%] |
|-----------------|-----------------|------------------------|-----------------|
| All ages | | | |
| Children (0–14) | ...% [...–...%] | ...% [...–...%] ... | ...% [...–...%] |
| Women (15+) | 39% [35–43%] | 29% [26–33%] 34 | 29% [26–33%] |
| Men (15+) | 39% [35–44%] | 33% [29–37%] 164 | 30% [27–34%] |

ELIMINATION OF MOTHER-TO-CHILD TRANSMISSION

| | 2010 | 2019 |
|---|-----------------|-----------------|
| Percentage of pregnant women living with HIV accessing antiretroviral medicines | ...% [...–...%] | ...% [...–...%] |
| Final vertical transmission rate including during breastfeeding | ...% [...–...%] | ...% [...–...%] |
| Early infant diagnosis | ...% [...–...%] | ...% [...–...%] |

HIV COMORBIDITIES

| | |
|--|-----------|
| Estimated number of incident tuberculosis cases among people living with HIV (2018) | 15 [2–39] |
| People living with HIV who started TB preventive therapy (2018) | 0% |
| Women who tested positive for HIV among those screened for cervical cancer (programme data) (2019) | 100% |
| People coinfecting with HIV and hepatitis C virus starting hepatitis C treatment (2019) | 33.3% |

HIV PREVENTION

| | |
|--|-------|
| Adults aged 15+ years with unsuppressed viral load | <0.1% |
| Knowledge of HIV prevention among young people aged 15–24 years (2014) | |
| — Women | 22.8% |
| — Men | 20.7% |

Condom use at last sex with a non-marital, non-cohabiting partner among people aged 15–49 years

| | |
|---------|-----|
| — Women | ... |
| — Men | ... |

Women aged 15–49 years who have their demand for family planning satisfied by modern methods

| | |
|--|----------------|
| Men aged 15–49 years who are circumcised | Not applicable |
|--|----------------|

Voluntary medical male circumcisions performed according to national standards

| | |
|---|---|
| People who received PrEP at least once during the reporting period (2019) | 1 |
|---|---|

Harm reduction

| | |
|---|-----|
| — Use of sterile injecting equipment at last injection | ... |
| — Needles and syringes distributed per person who injects | ... |
| — Coverage of opioid substitution therapy | ... |
| — Naloxone available (2019) | No |
| — Safe injection rooms available (2019) | No |