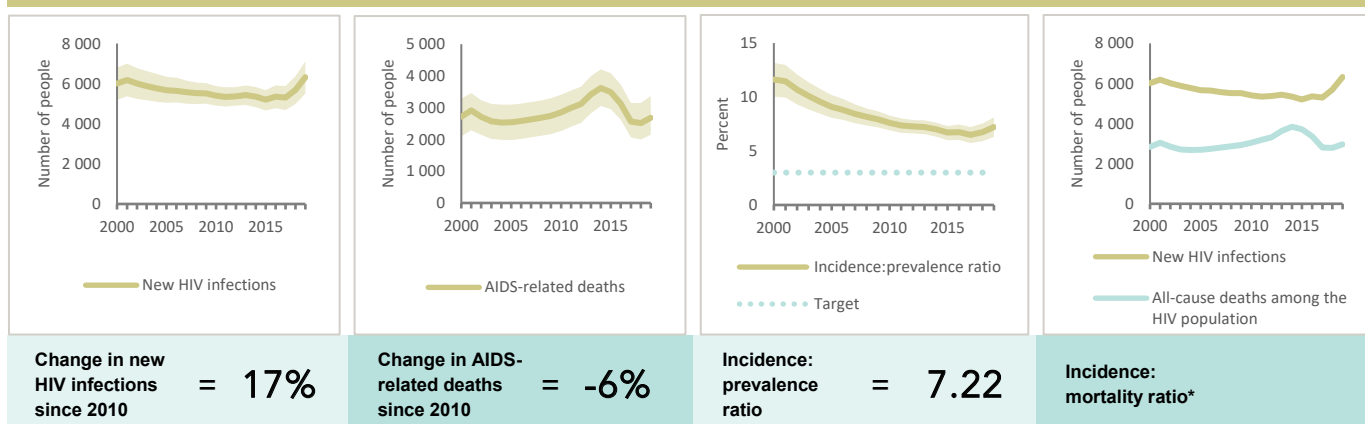


MALAYSIA

EPIDEMIC ESTIMATES

	2010	2015	2019
New HIV infections			
New HIV infections (all ages)	5400 [4900–5900]	5200 [4700–5700]	6300 [5500–7100]
New HIV infections (0–14)	<100 [<100– <100]	<100 [<100– <100]	<100 [<100– <100]
New HIV infections (women, 15+)	1000 [870–1100]	720 [620–800]	580 [<500–690]
New HIV infections (men, 15+)	4300 [3900–4700]	4500 [4000–4900]	5700 [5000–6400]
HIV incidence per 1000 population	0.19 [0.18–0.21]	0.17 [0.15–0.19]	0.2 [0.18–0.23]
AIDS-related deaths			
AIDS-related deaths (all ages)	2900 [2300–3400]	3500 [3000–4100]	2700 [2100–3400]
AIDS-related deaths (0–14)	<100 [<100– <100]	<100 [<100– <100]	<100 [<100– <100]
AIDS-related deaths (women, 15+)	<500 [<200– <500]	<500 [<500–600]	<500 [<500–510]
AIDS-related deaths (men, 15+)	2500 [2100–3000]	3000 [2600–3500]	2300 [1900–2800]
People living with HIV			
People living with HIV (all ages)	71 000 [61 000–83 000]	78 000 [69 000–89 000]	88 000 [78 000–98 000]
People living with HIV (0–14)	<500 [<500–580]	<500 [<500–530]	<500 [<500– <500]
People living with HIV (women, 15+)	12 000 [11 000–14 000]	15 000 [13 000–16 000]	15 000 [14 000–17 000]
People living with HIV (men, 15+)	58 000 [50 000–69 000]	63 000 [56 000–72 000]	72 000 [64 000–81 000]
HIV prevalence (15–49)	0.4 [0.3–0.5]	0.4 [0.3–0.4]	0.4 [0.4–0.4]

EPIDEMIC TRANSITION METRICS



* The incidence:mortality ratio is not published if the country has not achieved antiretroviral therapy coverage of 81% or higher (the testing and treatment target for 2020).

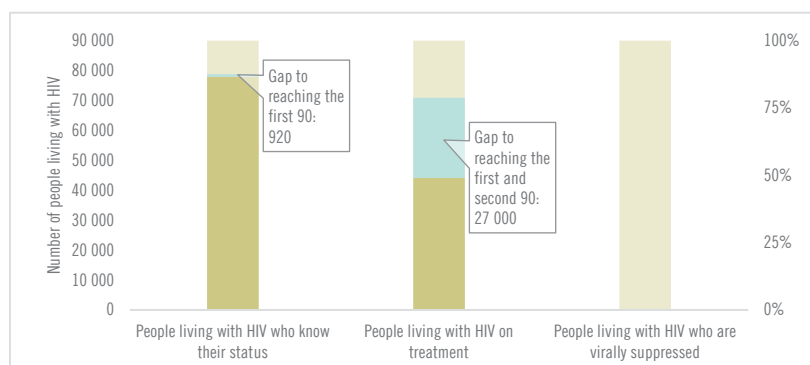
EXPENDITURES

	Financing sources					Total
	Domestic private	Domestic public	International: PEPFAR	International: Global Fund	International: all others	
Last available report: 2019	US\$ 607 630	US\$ 23 214 913	US\$ 0	US\$ 487 627	US\$ 40 342	US\$ 24 360 560

Note: Global AIDS Monitoring report was not available at the time of publication.

COUNTRY DATA

HIV TESTING AND TREATMENT CASCADE



All ages	89% [79–100%]	50% [45–56%] 44 168	...% [...–...%]
Children (0–14)	92% [77–100%]	92% [77–100%] 301	...% [...–...%]
Women (15+)	74% [66–83%]	71% [63–79%] 10 679	...% [...–...%]
Men (15+)	92% [82–100%]	46% [41–52%] 33 188	...% [...–...%]

ELIMINATION OF MOTHER-TO-CHILD TRANSMISSION

	2010	2019
Percentage of pregnant women living with HIV accessing antiretroviral medicines	79% [66–92%]	100% [84–100%]
Final vertical transmission rate including during breastfeeding	17% [15–19%]	2% [1–2%]
Early infant diagnosis	76.1% [65.2–90.8%]	95.0% [82.9– >95%]