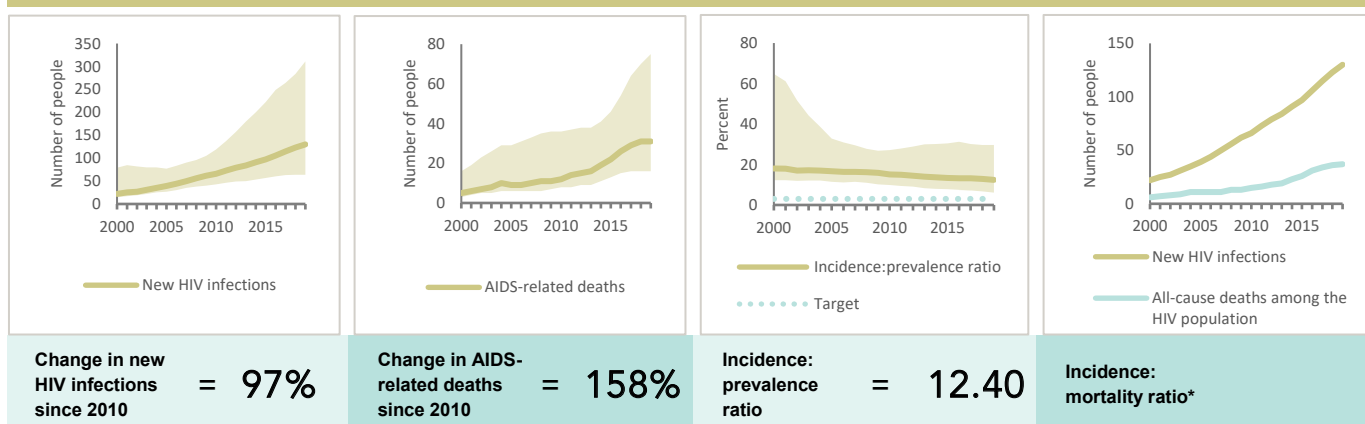


FIJI

EPIDEMIC ESTIMATES

	2010	2015	2019
New HIV infections			
New HIV infections (all ages)	<100 [<100– <200]	<100 [<100– <500]	<200 [<100– <500]
New HIV infections (0–14)	... [...–...]	... [...–...]	... [...–...]
New HIV infections (women, 15+)	<100 [<100– <100]	<100 [<100– <100]	<100 [<100– <100]
New HIV infections (men, 15+)	<100 [<100– <100]	<100 [<100– <200]	<200 [<100– <500]
HIV incidence per 1000 population	0.08 [0.05–0.14]	0.11 [0.06–0.25]	0.14 [0.07–0.34]
AIDS-related deaths			
AIDS-related deaths (all ages)	<100 [<100– <100]	<100 [<100– <100]	<100 [<100– <100]
AIDS-related deaths (0–14)	... [...–...]	... [...–...]	... [...–...]
AIDS-related deaths (women, 15+)	<100 [<100– <100]	<100 [<100– <100]	<100 [<100– <100]
AIDS-related deaths (men, 15+)	<100 [<100– <100]	<100 [<100– <100]	<100 [<100– <100]
People living with HIV			
People living with HIV (all ages)	440 [<500–800]	730 [500–1400]	1000 [670–2200]
People living with HIV (0–14)	... [...–...]	... [...–...]	... [...–...]
People living with HIV (women, 15+)	<200 [<200– <500]	<500 [<200– <500]	<500 [<500–640]
People living with HIV (men, 15+)	<500 [<500–520]	<500 [<500–880]	710 [<500–1500]
HIV prevalence (15–49)	<0.1 [<0.1–0.1]	0.1 [<0.1–0.2]	0.2 [0.1–0.4]

EPIDEMIC TRANSITION METRICS



* The incidence:mortality ratio is not published if the country has not achieved antiretroviral therapy coverage of 81% or higher (the testing and treatment target for 2020).

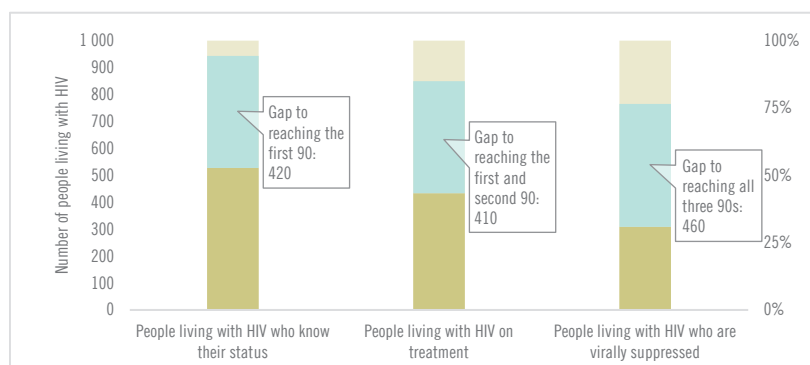
EXPENDITURES

	Financing sources					Total
	Domestic private	Domestic public	International: PEPFAR	International: Global Fund	International: all others	
Last available report: 2016	...	US\$ 509 384	US\$ 158 885	US\$ 668 269

Note: Global AIDS Monitoring report was not available at the time of publication.

COUNTRY DATA

HIV TESTING AND TREATMENT CASCADE



All ages	50% [32–100%]	41% [27–85%] 434	29% [19–61%]
Children (0–14)	...% [...–...%]	...% [...–...%]% [...–...%]
Women (15+)	81% [54–100%]	66% [44–100%] 219	43% [29–84%]
Men (15+)	35% [22–73%]	26% [16–53%] 182	19% [12–40%]

ELIMINATION OF MOTHER-TO-CHILD TRANSMISSION

	2010	2019
Percentage of pregnant women living with HIV accessing antiretroviral medicines	...% [...–...%]	...% [...–...%]
Final vertical transmission rate including during breastfeeding	...% [...–...%]	...% [...–...%]
Early infant diagnosis	...% [...–...%]	...% [...–...%]