

## Annex 3

---

# Regional and global profiles

# WHO African Region

WHO Member States

47

## ESTIMATES OF TB BURDEN, <sup>a</sup> 2018

	NUMBER (THOUSANDS)	RATE (per 100 000 population)
Total TB incidence	2 450 (2 190–2 730)	231 (206–257)
HIV-positive TB incidence	615 (539–697)	58 (51–66)
MDR/RR-TB incidence <sup>b</sup>	77 (65–91)	7.3 (6.1–8.5)
HIV-negative TB mortality	397 (331–468)	37 (31–44)
HIV-positive TB mortality	211 (184–239)	20 (17–22)

## ESTIMATED PROPORTION OF TB CASES WITH MDR/RR-TB, 2018

New cases	2.5% (1.6–3.6)
Previously treated cases	12% (0.55–39)

## TB CASE NOTIFICATIONS, 2018

Total new and relapse	1 372 748
– % tested with rapid diagnostics at time of diagnosis	32%
– % with known HIV status	87%
– % pulmonary	85%
– % bacteriologically confirmed <sup>c</sup>	65%
– % children aged 0–14 years <sup>d</sup>	9%
– % women <sup>d</sup>	36%
– % men <sup>d</sup>	55%
Total cases notified	1 402 743

## UNIVERSAL HEALTH COVERAGE AND SOCIAL PROTECTION

TB treatment coverage (notified/estimated incidence), 2018	56% (50–63)
TB patients facing catastrophic total costs	
TB case fatality ratio (estimated mortality/estimated incidence), 2018	25% (21–29)

## TB/HIV CARE IN NEW AND RELAPSE TB PATIENTS, 2018

	NUMBER	(%) <sup>h</sup>
Patients with known HIV-status who are HIV-positive	339 050	29%
– on antiretroviral therapy	304 474	90%

## DRUG-RESISTANT TB CARE, 2018

% of bacteriologically confirmed TB cases tested for rifampicin resistance <sup>c</sup>		
– New cases		51%
– Previously treated cases		72%
Laboratory-confirmed cases <sup>e</sup>	MDR/RR-TB: 24 712, XDR-TB: 727	
Patients started on treatment <sup>e,f</sup>	MDR/RR-TB: 19 730, XDR-TB: 682	
MDR/RR-TB cases tested for resistance to second-line drugs		12 276

## TREATMENT SUCCESS RATE AND COHORT SIZE

	SUCCESS	COHORT
New and relapse <sup>g</sup> cases registered in 2017	82%	1 278 013
Previously treated cases, excluding relapse, registered in 2017	71%	25 932
HIV-positive TB cases registered in 2017	78%	340 993
MDR/RR-TB cases started on second-line treatment in 2016	60%	18 571
XDR-TB cases started on second-line treatment in 2016	56%	707

## TB PREVENTIVE TREATMENT, 2018

% of HIV-positive people (newly enrolled in care) on preventive treatment <sup>h</sup>	60%
% of children (aged <5) household contacts of bacteriologically confirmed TB cases on preventive treatment	29% (29–30)

## TB FINANCING (LOW- AND MIDDLE-INCOME COUNTRIES),<sup>i</sup> 2019

National TB budget (US\$ millions)	1 269
Funding source:	27% domestic, 29% international, 44% unfunded

Data are as reported to WHO. Estimates of TB and MDR/RR-TB burden are produced by WHO in consultation with countries. Estimates are rounded and totals are computed prior to rounding.

<sup>a</sup> Ranges represent uncertainty intervals.

<sup>b</sup> MDR is TB resistant to rifampicin and isoniazid; RR is TB resistant to rifampicin.

<sup>c</sup> Calculated for pulmonary cases only.

<sup>d</sup> Restricted to notifications for which age-sex disaggregation was reported.

<sup>e</sup> Includes cases with unknown previous TB treatment history.

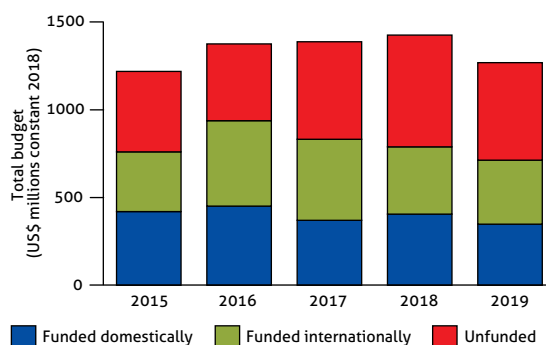
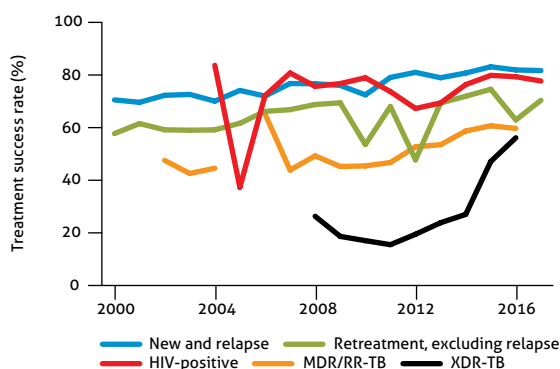
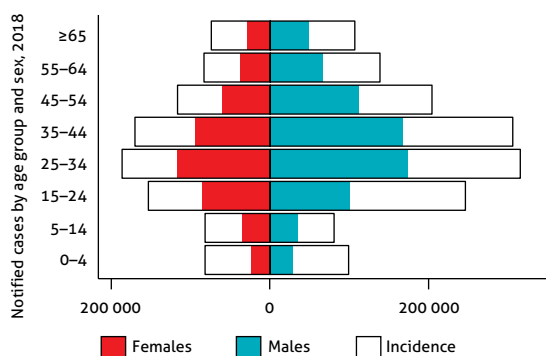
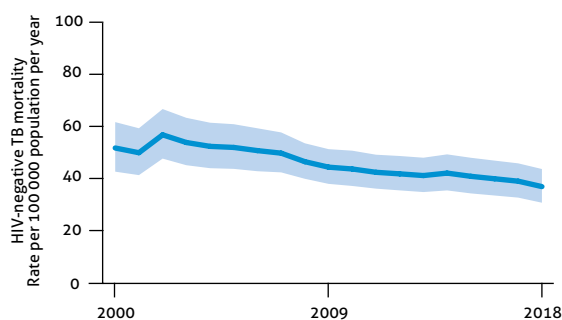
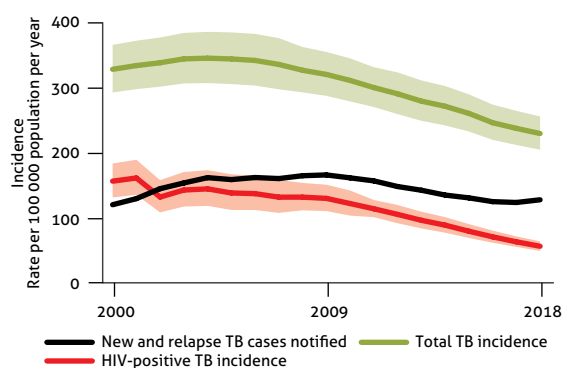
<sup>f</sup> Includes patients diagnosed before 2018 and patients who were not laboratory-confirmed.

<sup>g</sup> Some countries reported on new cases only.

<sup>h</sup> Calculations exclude countries with missing numerators or denominators.

<sup>i</sup> Data are not collected from all Member States. Financing indicators exclude funding for general healthcare services provided outside NTPs.

POPULATION 2018 **1 064 MILLION**



**WHO Member States** **35**  
**Other countries and territories** **11**

## ESTIMATES OF TB BURDEN,<sup>a</sup> 2018

	NUMBER (thousands)	RATE (per 100 000 population)
Total TB incidence	289 (268–310)	29 (27–31)
HIV-positive TB incidence	29 (27–31)	2.9 (2.6–3.1)
MDR/RR-TB incidence <sup>b</sup>	11 (9–12)	1 (0.92–1.2)
HIV-negative TB mortality	17 (16–19)	1.7 (1.6–1.8)
HIV-positive TB mortality	6 (5–7)	0.59 (0.52–0.66)

## ESTIMATED PROPORTION OF TB CASES WITH MDR/RR-TB, 2018

New cases	2.5% (1.5–3.8)
Previously treated cases	12% (4–24)

## TB CASE NOTIFICATIONS, 2018

Total new and relapse	233 549
– % tested with rapid diagnostics at time of diagnosis	18%
– % with known HIV status	82%
– % pulmonary	85%
– % bacteriologically confirmed <sup>c</sup>	79%
– % children aged 0–14 years <sup>d</sup>	5%
– % women <sup>d</sup>	32%
– % men <sup>d</sup>	63%
Total cases notified	248 135

## UNIVERSAL HEALTH COVERAGE AND SOCIAL PROTECTION

TB treatment coverage (notified/estimated incidence), 2018	81% (75–87)
TB patients facing catastrophic total costs	
TB case fatality ratio (estimated mortality/estimated incidence), 2018	8% (7–9)

## TB/HIV CARE IN NEW AND RELAPSE TB PATIENTS, 2018

	NUMBER	(%) <sup>h</sup>
Patients with known HIV-status who are HIV-positive	19 899	10%
– on antiretroviral therapy	12 028	63%

## DRUG-RESISTANT TB CARE, 2018

% of bacteriologically confirmed TB cases tested for rifampicin resistance <sup>c</sup>		
– New cases		38%
– Previously treated cases		47%
Laboratory-confirmed cases <sup>e</sup>	MDR/RR-TB: 4 759, XDR-TB: 149	
Patients started on treatment <sup>e,f</sup>	MDR/RR-TB: 4 548, XDR-TB: 112	
MDR/RR-TB cases tested for resistance to second-line drugs		2 117

## TREATMENT SUCCESS RATE AND COHORT SIZE

	SUCCESS	COHORT
New and relapse <sup>g</sup> cases registered in 2017	76%	224 460
Previously treated cases, excluding relapse, registered in 2017	48%	13 555
HIV-positive TB cases registered in 2017	56%	19 541
MDR/RR-TB cases started on second-line treatment in 2016	59%	2 966
XDR-TB cases started on second-line treatment in 2016	62%	120

## TB PREVENTIVE TREATMENT, 2018

% of HIV-positive people (newly enrolled in care) on preventive treatment <sup>h</sup>	9.3%
% of children (aged <5) household contacts of bacteriologically confirmed TB cases on preventive treatment	55% (52–58)

## TB FINANCING (LOW- AND MIDDLE-INCOME COUNTRIES),<sup>i</sup> 2019

National TB budget (US\$ millions)	308
Funding source:	76% domestic, 10% international, 14% unfunded

Data are as reported to WHO. Estimates of TB and MDR/RR-TB burden are produced by WHO in consultation with countries. Estimates are rounded and totals are computed prior to rounding.

<sup>a</sup> Ranges represent uncertainty intervals.

<sup>b</sup> MDR is TB resistant to rifampicin and isoniazid; RR is TB resistant to rifampicin.

<sup>c</sup> Calculated for pulmonary cases only.

<sup>d</sup> Restricted to notifications for which age-sex disaggregation was reported.

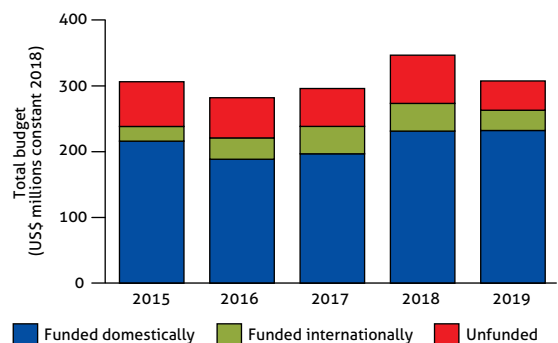
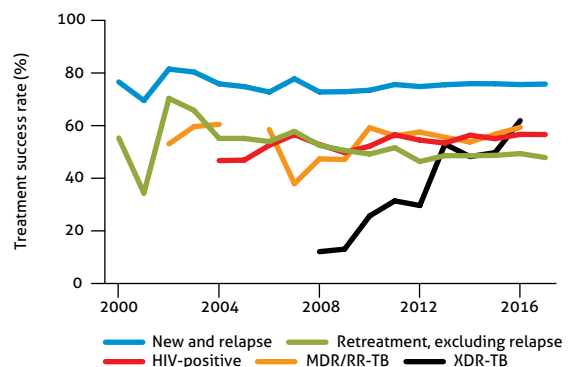
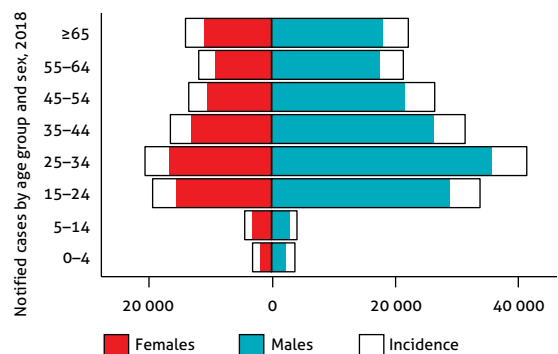
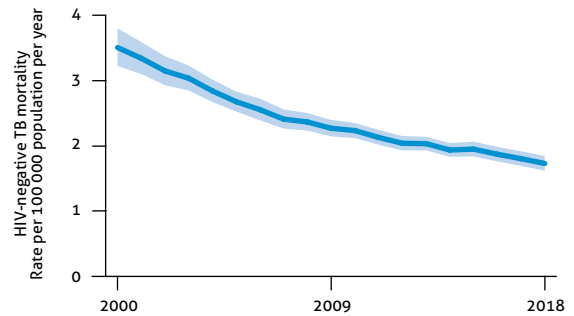
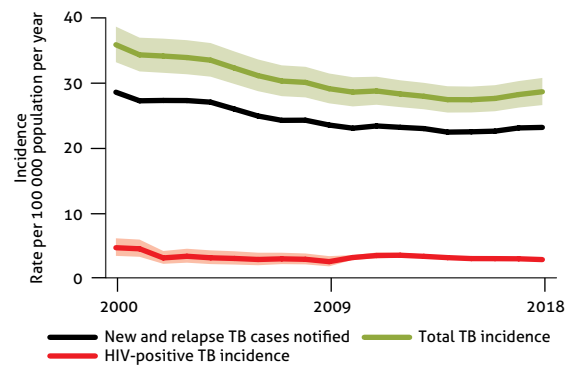
<sup>e</sup> Includes cases with unknown previous TB treatment history.

<sup>f</sup> Includes patients diagnosed before 2018 and patients who were not laboratory-confirmed.

<sup>g</sup> Some countries reported on new cases only.

<sup>h</sup> Calculations exclude countries with missing numerators or denominators.

<sup>i</sup> Data are not collected from all Member States. Financing indicators exclude funding for general healthcare services provided outside NTPs.



WHO Member States **21**

Other countries and territories **1**

## ESTIMATES OF TB BURDEN,<sup>a</sup> 2018

	NUMBER (thousands)	RATE (per 100 000 population)
Total TB incidence	810 (639–1 000)	115 (91–142)
HIV-positive TB incidence	7 (5–9)	0.99 (0.75–1.3)
MDR/RR-TB incidence <sup>b</sup>	38 (28–50)	5.5 (4–7.2)
HIV-negative TB mortality	77 (66–89)	11 (9.4–13)
HIV-positive TB mortality	2 (2–3)	0.31 (0.23–0.4)

## ESTIMATED PROPORTION OF TB CASES WITH MDR/RR-TB, 2018

New cases	4% (2.8–5.4)
Previously treated cases	16% (2.2–41)

## TB CASE NOTIFICATIONS, 2018

Total new and relapse	526 379
– % tested with rapid diagnostics at time of diagnosis	21%
– % with known HIV status	30%
– % pulmonary	76%
– % bacteriologically confirmed <sup>c</sup>	53%
– % children aged 0–14 years <sup>d</sup>	13%
– % women <sup>d</sup>	41%
– % men <sup>d</sup>	46%
Total cases notified	537 761

## UNIVERSAL HEALTH COVERAGE AND SOCIAL PROTECTION

TB treatment coverage (notified/estimated incidence), 2018 **65% (53–82)**

TB patients facing catastrophic total costs

TB case fatality ratio (estimated mortality/estimated incidence), 2018 **10% (7–13)**

## TB/HIV CARE IN NEW AND RELAPSE TB PATIENTS, 2018

	NUMBER	(%) <sup>h</sup>
Patients with known HIV-status who are HIV-positive	1 749	1.1%
– on antiretroviral therapy	1 332	78%

## DRUG-RESISTANT TB CARE, 2018

% of bacteriologically confirmed TB cases tested for rifampicin resistance <sup>c</sup>		
– New cases		43%
– Previously treated cases		83%
Laboratory-confirmed cases <sup>e</sup>	MDR/RR-TB: 5 584, XDR-TB: 122	
Patients started on treatment <sup>e,f</sup>	MDR/RR-TB: 4 566, XDR-TB: 100	
MDR/RR-TB cases tested for resistance to second-line drugs		3 627

## TREATMENT SUCCESS RATE AND COHORT SIZE

	SUCCESS	COHORT
New and relapse <sup>g</sup> cases registered in 2017	91%	521 722
Previously treated cases, excluding relapse, registered in 2017	75%	12 770
HIV-positive TB cases registered in 2017	74%	881
MDR/RR-TB cases started on second-line treatment in 2016	65%	3 986
XDR-TB cases started on second-line treatment in 2016	37%	90

## TB PREVENTIVE TREATMENT, 2018

% of HIV-positive people (newly enrolled in care) on preventive treatment<sup>h</sup> **13%**

% of children (aged <5) household contacts of bacteriologically confirmed TB cases on preventive treatment **23% (21–24)**

## TB FINANCING (LOW- AND MIDDLE-INCOME COUNTRIES),<sup>i</sup> 2019

National TB budget (US\$ millions)	254
Funding source:	18% domestic, 30% international, 52% unfunded

Data are as reported to WHO. Estimates of TB and MDR/RR-TB burden are produced by WHO in consultation with countries. Estimates are rounded and totals are computed prior to rounding.

<sup>a</sup> Ranges represent uncertainty intervals.

<sup>b</sup> MDR is TB resistant to rifampicin and isoniazid; RR is TB resistant to rifampicin.

<sup>c</sup> Calculated for pulmonary cases only.

<sup>d</sup> Restricted to notifications for which age-sex disaggregation was reported.

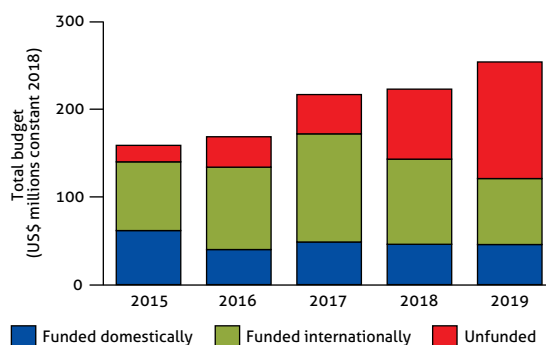
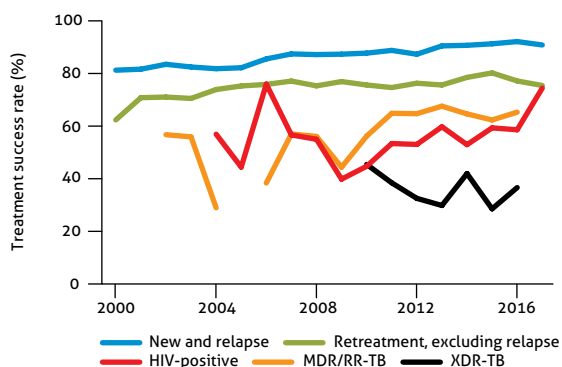
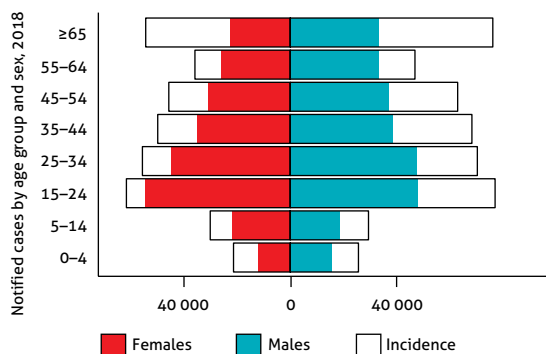
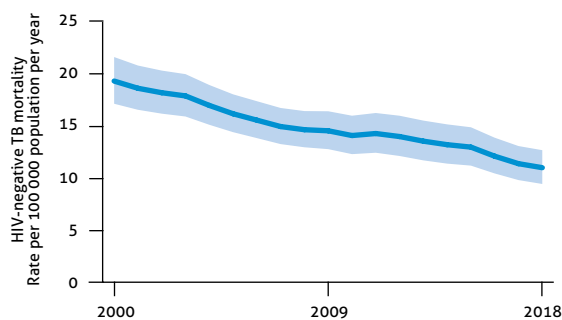
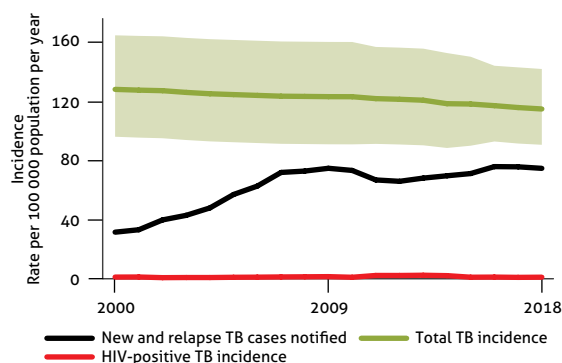
<sup>e</sup> Includes cases with unknown previous TB treatment history.

<sup>f</sup> Includes patients diagnosed before 2018 and patients who were not laboratory-confirmed.

<sup>g</sup> Some countries reported on new cases only.

<sup>h</sup> Calculations exclude countries with missing numerators or denominators.

<sup>i</sup> Data are not collected from all Member States. Financing indicators exclude funding for general healthcare services provided outside NTPs.



# WHO European Region

WHO Member States **53**

Other countries and territories **1**

## ESTIMATES OF TB BURDEN,<sup>a</sup> 2018

	NUMBER (thousands)	RATE (per 100 000 population)
Total TB incidence	259 (225–296)	28 (24–32)
HIV-positive TB incidence	30 (23–37)	3.2 (2.5–4)
MDR/RR-TB incidence <sup>b</sup>	77 (60–95)	8.3 (6.5–10)
HIV-negative TB mortality	23 (22–24)	2.5 (2.4–2.6)
HIV-positive TB mortality	4 (3–6)	0.47 (0.36–0.6)

## ESTIMATED PROPORTION OF TB CASES WITH MDR/RR-TB, 2018

New cases	18% (16–19)
Previously treated cases	54% (47–61)

## TB CASE NOTIFICATIONS, 2018

Total new and relapse	218 090
– % tested with rapid diagnostics at time of diagnosis	53%
– % with known HIV status	92%
– % pulmonary	84%
– % bacteriologically confirmed <sup>c</sup>	66%
– % children aged 0–14 years <sup>d</sup>	4%
– % women <sup>d</sup>	32%
– % men <sup>d</sup>	64%
Total cases notified	260 331

## UNIVERSAL HEALTH COVERAGE AND SOCIAL PROTECTION

TB treatment coverage (notified/estimated incidence), 2018 **84% (74–97)**

TB patients facing catastrophic total costs

TB case fatality ratio (estimated mortality/estimated incidence), 2018 **11% (9–12)**

## TB/HIV CARE IN NEW AND RELAPSE TB PATIENTS, 2018

	NUMBER	(%) <sup>h</sup>
Patients with known HIV-status who are HIV-positive	24 081	13%
– on antiretroviral therapy	17 436	73%

## DRUG-RESISTANT TB CARE, 2018

% of bacteriologically confirmed TB cases tested for rifampicin resistance <sup>c</sup>		
– New cases		91%
– Previously treated cases		93%
Laboratory-confirmed cases <sup>e</sup>	MDR/RR-TB: 48 739, XDR-TB: 7 899	
Patients started on treatment <sup>e,f</sup>	MDR/RR-TB: 49 696, XDR-TB: 7 351	
MDR/RR-TB cases tested for resistance to second-line drugs		42 425

## TREATMENT SUCCESS RATE AND COHORT SIZE

	SUCCESS	COHORT
New and relapse <sup>g</sup> cases registered in 2017	78%	178 156
Previously treated cases, excluding relapse, registered in 2017	59%	20 159
HIV-positive TB cases registered in 2017	51%	15 465
MDR/RR-TB cases started on second-line treatment in 2016	57%	45 239
XDR-TB cases started on second-line treatment in 2016	39%	5 686

## TB PREVENTIVE TREATMENT, 2018

% of HIV-positive people (newly enrolled in care) on preventive treatment<sup>h</sup> **69%**

% of children (aged <5) household contacts of bacteriologically confirmed TB cases on preventive treatment **122% (117–129)**

## TB FINANCING (LOW- AND MIDDLE-INCOME COUNTRIES),<sup>i</sup> 2019

National TB budget (US\$ millions)	1 797
Funding source:	96% domestic, 2.9% international, 1.5% unfunded

Data are as reported to WHO. Estimates of TB and MDR/RR-TB burden are produced by WHO in consultation with countries. Estimates are rounded and totals are computed prior to rounding.

<sup>a</sup> Ranges represent uncertainty intervals.

<sup>b</sup> MDR is TB resistant to rifampicin and isoniazid; RR is TB resistant to rifampicin.

<sup>c</sup> Calculated for pulmonary cases only.

<sup>d</sup> Restricted to notifications for which age-sex disaggregation was reported.

<sup>e</sup> Includes cases with unknown previous TB treatment history.

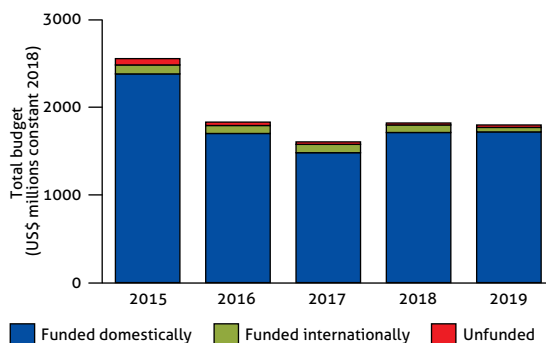
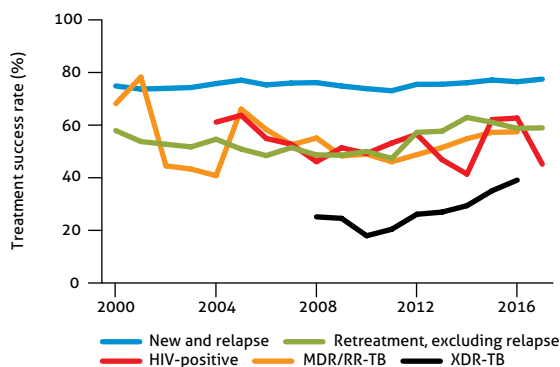
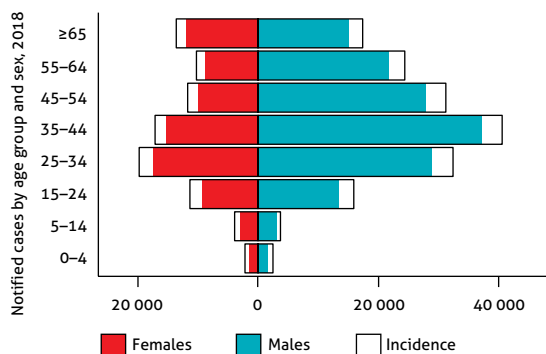
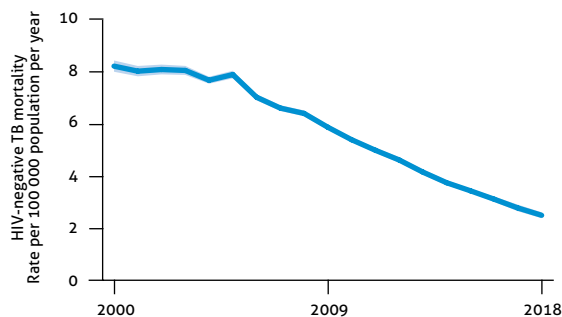
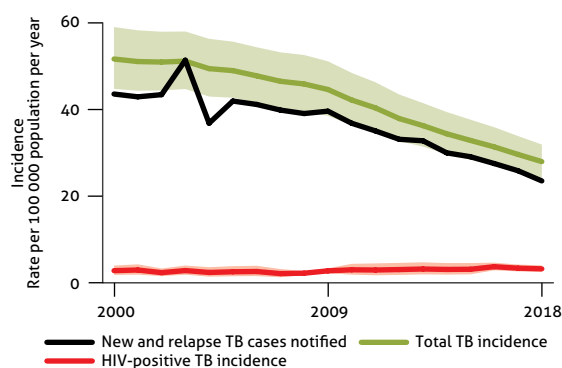
<sup>f</sup> Includes patients diagnosed before 2018 and patients who were not laboratory-confirmed.

<sup>g</sup> Some countries reported on new cases only.

<sup>h</sup> Calculations exclude countries with missing numerators or denominators.

<sup>i</sup> Data are not collected from all Member States. Financing indicators exclude funding for general healthcare services provided outside NTPs.

POPULATION 2018 **927 MILLION**



# WHO South-East Asia Region

WHO Member States

11

## ESTIMATES OF TB BURDEN, <sup>a</sup> 2018

	NUMBER (thousands)	RATE (per 100 000 population)
Total TB incidence	4 370 (3 480–5 370)	220 (175–271)
HIV-positive TB incidence	140 (107–178)	7.1 (5.4–9)
MDR/RR-TB incidence <sup>b</sup>	182 (126–249)	9.2 (6.3–13)
HIV-negative TB mortality	637 (598–677)	32 (30–34)
HIV-positive TB mortality	21 (16–28)	1.1 (0.79–1.4)

## ESTIMATED PROPORTION OF TB CASES WITH MDR/RR-TB, 2018

New cases	2.6% (2–3.4)
Previously treated cases	14% (7.7–23)

## TB CASE NOTIFICATIONS, 2018

Total new and relapse	3 183 255
– % tested with rapid diagnostics at time of diagnosis	37%
– % with known HIV status	61%
– % pulmonary	83%
– % bacteriologically confirmed <sup>c</sup>	56%
– % children aged 0–14 years <sup>d</sup>	7%
– % women <sup>d</sup>	35%
– % men <sup>d</sup>	58%
Total cases notified	3 362 783

## UNIVERSAL HEALTH COVERAGE AND SOCIAL PROTECTION

TB treatment coverage (notified/estimated incidence), 2018	73% (59–92)
TB patients facing catastrophic total costs	
TB case fatality ratio (estimated mortality/estimated incidence), 2018	15% (12–19)

## TB/HIV CARE IN NEW AND RELAPSE TB PATIENTS, 2018

	NUMBER	(%) <sup>h</sup>
Patients with known HIV-status who are HIV-positive	76 858	4.1%
– on antiretroviral therapy	61 344	80%

## DRUG-RESISTANT TB CARE, 2018

% of bacteriologically confirmed TB cases tested for rifampicin resistance <sup>c</sup>		
– New cases		42%
– Previously treated cases		89%
Laboratory-confirmed cases <sup>e</sup>	MDR/RR-TB: 75 964, XDR-TB: 3 580	
Patients started on treatment <sup>e,f</sup>	MDR/RR-TB: 57 447, XDR-TB: 2 860	
MDR/RR-TB cases tested for resistance to second-line drugs		43 684

## TREATMENT SUCCESS RATE AND COHORT SIZE

	SUCCESS	COHORT
New and relapse <sup>g</sup> cases registered in 2017	83%	2 588 327
Previously treated cases, excluding relapse, registered in 2017	57%	157 696
HIV-positive TB cases registered in 2017	71%	56 872
MDR/RR-TB cases started on second-line treatment in 2016	52%	40 725
XDR-TB cases started on second-line treatment in 2016	31%	2 567

## TB PREVENTIVE TREATMENT, 2018

% of HIV-positive people (newly enrolled in care) on preventive treatment <sup>h</sup>	15%
% of children (aged <5) household contacts of bacteriologically confirmed TB cases on preventive treatment	26% (24–28)

## TB FINANCING (LOW- AND MIDDLE-INCOME COUNTRIES), <sup>i</sup> 2019

National TB budget (US\$ millions)	1 197
Funding source:	52% domestic, 24% international, 24% unfunded

Data are as reported to WHO. Estimates of TB and MDR/RR-TB burden are produced by WHO in consultation with countries. Estimates are rounded and totals are computed prior to rounding.

<sup>a</sup> Ranges represent uncertainty intervals.

<sup>b</sup> MDR is TB resistant to rifampicin and isoniazid; RR is TB resistant to rifampicin.

<sup>c</sup> Calculated for pulmonary cases only.

<sup>d</sup> Restricted to notifications for which age-sex disaggregation was reported.

<sup>e</sup> Includes cases with unknown previous TB treatment history.

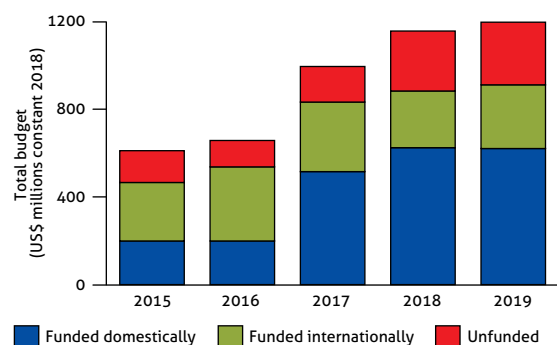
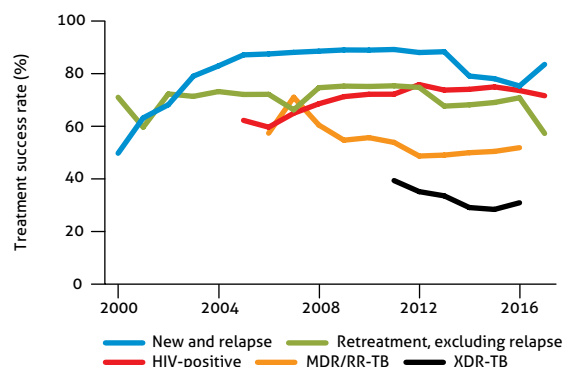
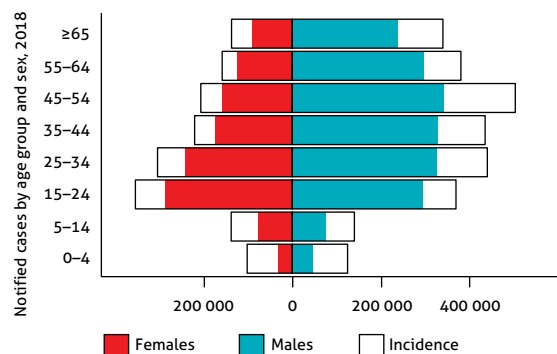
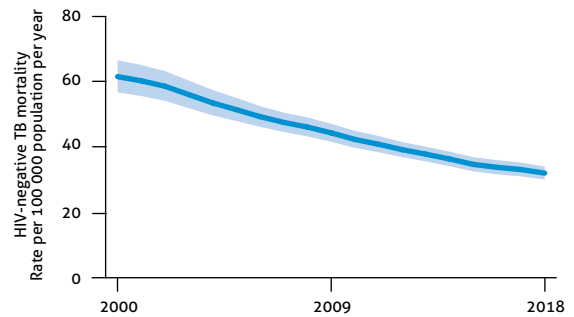
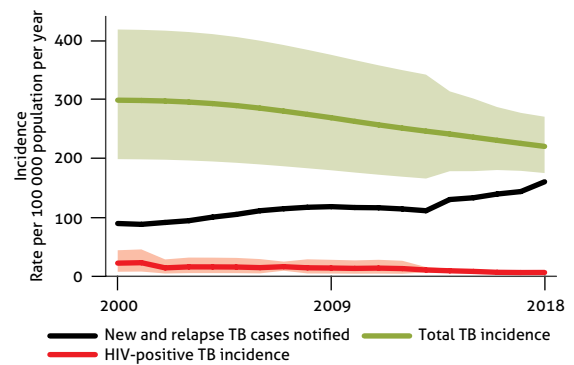
<sup>f</sup> Includes patients diagnosed before 2018 and patients who were not laboratory-confirmed.

<sup>g</sup> Some countries reported on new cases only.

<sup>h</sup> Calculations exclude countries with missing numerators or denominators.

<sup>i</sup> Data are not collected from all Member States. Financing indicators exclude funding for general healthcare services provided outside NTPs.

POPULATION 2018 1 982 MILLION



# WHO Western Pacific Region

WHO Member States **27**

Other countries and territories **9**

## ESTIMATES OF TB BURDEN,<sup>a</sup> 2018

	NUMBER (thousands)	RATE (per 100 000 population)
Total TB incidence	1 840 (1 520–2 180)	96 (79–114)
HIV-positive TB incidence	41 (30–53)	2.1 (1.5–2.8)
MDR/RR-TB incidence <sup>b</sup>	99 (79–122)	5.2 (4.1–6.4)
HIV-negative TB mortality	90 (83–98)	4.7 (4.3–5.1)
HIV-positive TB mortality	7 (5–8)	0.34 (0.25–0.43)

## ESTIMATED PROPORTION OF TB CASES WITH MDR/RR-TB, 2018

New cases	4.6% (3.5–5.9)
Previously treated cases	16% (7.4–28)

## TB CASE NOTIFICATIONS, 2018

Total new and relapse	1 416 729
– % tested with rapid diagnostics at time of diagnosis	20%
– % with known HIV status	54%
– % pulmonary	92%
– % bacteriologically confirmed <sup>c</sup>	41%
– % children aged 0–14 years <sup>d</sup>	5%
– % women <sup>d</sup>	31%
– % men <sup>d</sup>	64%
Total cases notified	1 441 363

## UNIVERSAL HEALTH COVERAGE AND SOCIAL PROTECTION

TB treatment coverage (notified/estimated incidence), 2018	77% (65–93)
TB patients facing catastrophic total costs	
TB case fatality ratio (estimated mortality/estimated incidence), 2018	5% (4–6)

## TB/HIV CARE IN NEW AND RELAPSE TB PATIENTS, 2018

	NUMBER	(%) <sup>h</sup>
Patients with known HIV-status who are HIV-positive	15 824	2.1%
– on antiretroviral therapy	13 156	84%

## DRUG-RESISTANT TB CARE, 2018

% of bacteriologically confirmed TB cases tested for rifampicin resistance <sup>c</sup>		
– New cases		47%
– Previously treated cases		74%
Laboratory-confirmed cases <sup>e</sup>	MDR/RR-TB: 27 014, XDR-TB: 591	
Patients started on treatment <sup>e,f</sup>	MDR/RR-TB: 20 084, XDR-TB: 298	
MDR/RR-TB cases tested for resistance to second-line drugs		5 570

## TREATMENT SUCCESS RATE AND COHORT SIZE

	SUCCESS	COHORT
New and relapse <sup>g</sup> cases registered in 2017	91%	1 337 685
Previously treated cases, excluding relapse, registered in 2017	79%	22 820
HIV-positive TB cases registered in 2017	79%	12 170
MDR/RR-TB cases started on second-line treatment in 2016	59%	14 602
XDR-TB cases started on second-line treatment in 2016	58%	88

## TB PREVENTIVE TREATMENT, 2018

% of HIV-positive people (newly enrolled in care) on preventive treatment <sup>h</sup>	39%
% of children (aged <5) household contacts of bacteriologically confirmed TB cases on preventive treatment	12% (11–13)

## TB FINANCING (LOW- AND MIDDLE-INCOME COUNTRIES),<sup>i</sup> 2019

National TB budget (US\$ millions)	1 092
Funding source:	68% domestic, 8.9% international, 23% unfunded

Data are as reported to WHO. Estimates of TB and MDR/RR-TB burden are produced by WHO in consultation with countries. Estimates are rounded and totals are computed prior to rounding.

<sup>a</sup> Ranges represent uncertainty intervals.

<sup>b</sup> MDR is TB resistant to rifampicin and isoniazid; RR is TB resistant to rifampicin.

<sup>c</sup> Calculated for pulmonary cases only.

<sup>d</sup> Restricted to notifications for which age-sex disaggregation was reported.

<sup>e</sup> Includes cases with unknown previous TB treatment history.

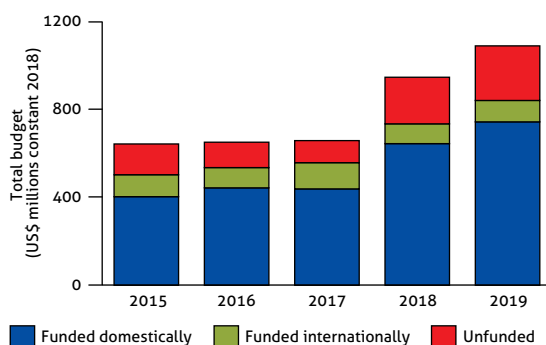
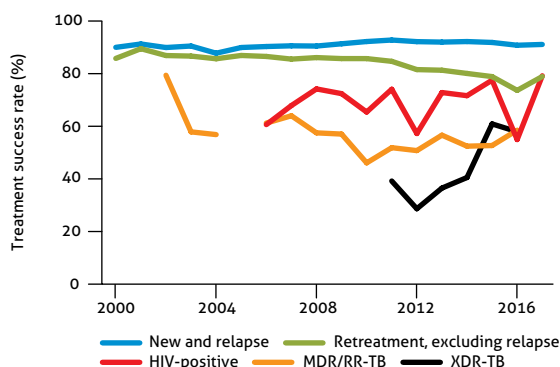
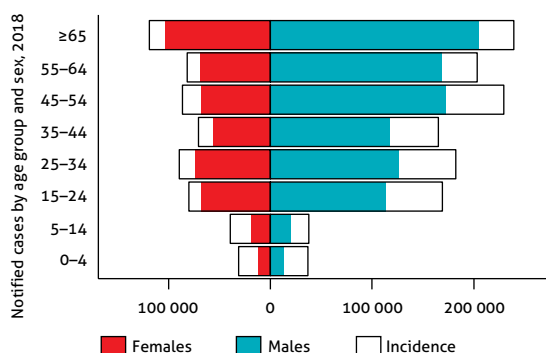
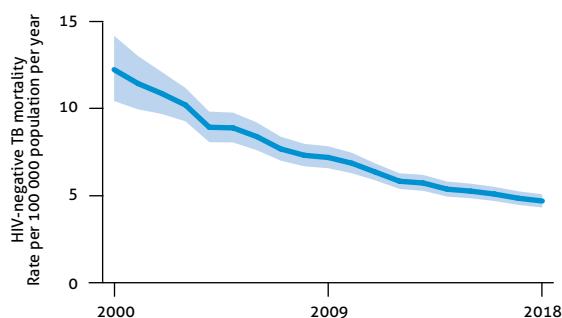
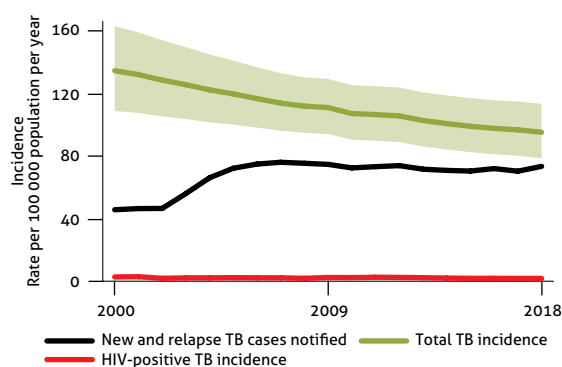
<sup>f</sup> Includes patients diagnosed before 2018 and patients who were not laboratory-confirmed.

<sup>g</sup> Some countries reported on new cases only.

<sup>h</sup> Calculations exclude countries with missing numerators or denominators.

<sup>i</sup> Data are not collected from all Member States. Financing indicators exclude funding for general healthcare services provided outside NTPs.

POPULATION 2018 **1 922 MILLION**



WHO Member States **194**

Other countries and territories **22**

### ESTIMATES OF TB BURDEN,<sup>a</sup> 2018

	NUMBER (thousands)	RATE (per 100 000 population)
Total TB incidence	10 000 (8 990–11 100)	132 (118–146)
HIV-positive TB incidence	862 (776–952)	11 (10–13)
MDR/RR-TB incidence <sup>b</sup>	484 (417–556)	6.4 (5.5–7.3)
HIV-negative TB mortality	1 240 (1 160–1 320)	16 (15–17)
HIV-positive TB mortality	251 (224–280)	3.3 (2.9–3.7)

### ESTIMATED PROPORTION OF TB CASES WITH MDR/RR-TB, 2018

New cases	3.4% (2.5–4.4)
Previously treated cases	18% (7.6–31)

### TB CASE NOTIFICATIONS, 2018

Total new and relapse	6 950 750
– % tested with rapid diagnostics at time of diagnosis	31%
– % with known HIV status	64%
– % pulmonary	85%
– % bacteriologically confirmed <sup>c</sup>	55%
– % children aged 0–14 years <sup>d</sup>	8%
– % women <sup>d</sup>	34%
– % men <sup>d</sup>	58%
Total cases notified	7 253 116

### UNIVERSAL HEALTH COVERAGE AND SOCIAL PROTECTION

TB treatment coverage (notified/estimated incidence), 2018 **69% (63–77)**

TB patients facing catastrophic total costs

TB case fatality ratio (estimated mortality/estimated incidence), 2018 **15% (13–17)**

### TB/HIV CARE IN NEW AND RELAPSE TB PATIENTS, 2018

	NUMBER	(%) <sup>h</sup>
Patients with known HIV-status who are HIV-positive	477 461	11%
– on antiretroviral therapy	409 770	86%

### DRUG-RESISTANT TB CARE, 2018

% of bacteriologically confirmed TB cases tested for rifampicin resistance <sup>c</sup>		
– New cases		46%
– Previously treated cases		83%
Laboratory-confirmed cases <sup>e</sup>	MDR/RR-TB: 186 772, XDR-TB: 13 068	
Patients started on treatment <sup>e,f</sup>	MDR/RR-TB: 156 071, XDR-TB: 11 403	
MDR/RR-TB cases tested for resistance to second-line drugs		109 699

### TREATMENT SUCCESS RATE AND COHORT SIZE

	SUCCESS	COHORT
New and relapse <sup>g</sup> cases registered in 2017	85%	6 128 363
Previously treated cases, excluding relapse, registered in 2017	61%	252 932
HIV-positive TB cases registered in 2017	75%	445 922
MDR/RR-TB cases started on second-line treatment in 2016	56%	126 089
XDR-TB cases started on second-line treatment in 2016	39%	9 258

### TB PREVENTIVE TREATMENT, 2018

% of HIV-positive people (newly enrolled in care) on preventive treatment<sup>h</sup> **49%**

% of children (aged <5) household contacts of bacteriologically confirmed TB cases on preventive treatment **27% (27–28)**

### TB FINANCING (LOW- AND MIDDLE-INCOME COUNTRIES),<sup>i</sup> 2019

National TB budget (US\$ millions)	5 916
Funding source:	63% domestic, 15% international, 22% unfunded

Data are as reported to WHO. Estimates of TB and MDR/RR-TB burden are produced by WHO in consultation with countries. Estimates are rounded and totals are computed prior to rounding.

<sup>a</sup> Ranges represent uncertainty intervals.

<sup>b</sup> MDR is TB resistant to rifampicin and isoniazid; RR is TB resistant to rifampicin.

<sup>c</sup> Calculated for pulmonary cases only.

<sup>d</sup> Restricted to notifications for which age-sex disaggregation was reported.

<sup>e</sup> Includes cases with unknown previous TB treatment history.

<sup>f</sup> Includes patients diagnosed before 2018 and patients who were not laboratory-confirmed.

<sup>g</sup> Some countries reported on new cases only.

<sup>h</sup> Calculations exclude countries with missing numerators or denominators.

<sup>i</sup> Data are not collected from all Member States. Financing indicators exclude funding for general healthcare services provided outside NTPs.

