

CAMBODIA

Total Population: 14,562,000 (2008)

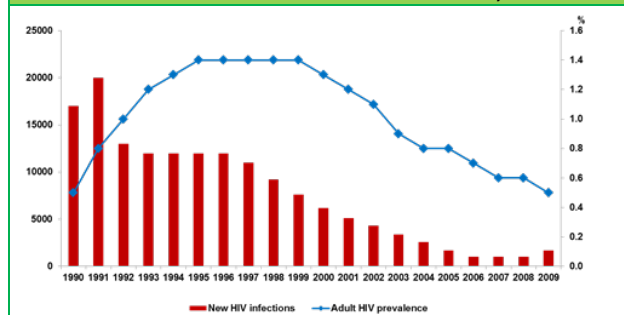
HIV EPIDEMIOLOGY^{1, 2}

- Adult HIV prevalence has declined from >1% in 1998 to 0.5% in 2009
- Declines attributed to increased condom use and better health service provision for people living with HIV
- In general, women are infected at younger ages than men
- HIV prevalence much higher in urban versus rural areas

HIV ESTIMATIONS

Estimated Adult HIV Seroprevalence (%)	0.5	(2009)
Estimated Number of Persons living with HIV	63,000	(2009)
Estimated Number of Women living with HIV	35,000	(2009)
Estimated HIV Prevalence among Pregnant Women (%)	0.45	(2010)
Estimated Number of HIV-positive pregnant women	1811	(2009)

Declines in HIV Prevalence and New Infections, 1990-2009



MATERNAL, NEONATAL, AND CHILD HEALTH: COVERAGE AND OUTCOMES^{1, 3-6}

- Despite some improvements in maternal health over the last decade, the maternal mortality ratio remains high
- The Child Survival and National Reproductive and Sexual Health Strategy was launched in 2006, with the aim of reducing child and maternal mortality

KEY MATERNAL HEALTH INDICATORS

Estimated Annual Births	367,000	(2009)
Maternal Mortality Ratio (per 100,000 live births)	290	(2008)

KEY REPRODUCTIVE HEALTH INDICATORS

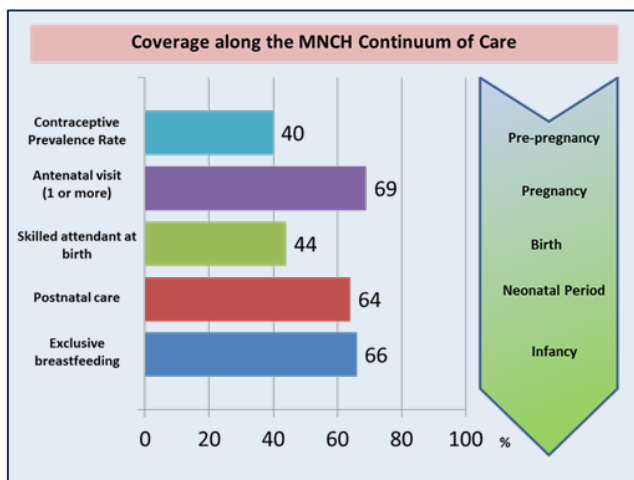
Contraceptive Prevalence Rate (%)	40	(2005-2009)
Unmet Need for Family Planning (%)	25	(2005)

ANTENATAL CARE AND DELIVERY

Antenatal Care Coverage (at least one visit, %)	69	(2005-2009)
Antenatal Care Coverage (4 or more visits, %)	27	(2005-2009)
Skilled Attendant at Delivery (%)	44	(2005-2009)
Institutional Delivery (%)	22	(2005-2009)

KEY NEONATAL AND CHILD HEALTH INDICATORS

Exclusive Breastfeeding for Infant <6 mos (%)	66	(2005-2009)
Infant Mortality Rate (per 1000 live births)	68	(2009)
Under-5 Mortality Rate (per 1000 live births)	88	(2009)



PREVENTION OF PARENT TO CHILD TRANSMISSION OF HIV: ACCESS, COVERAGE, AND OUTCOMES^{7, 8}

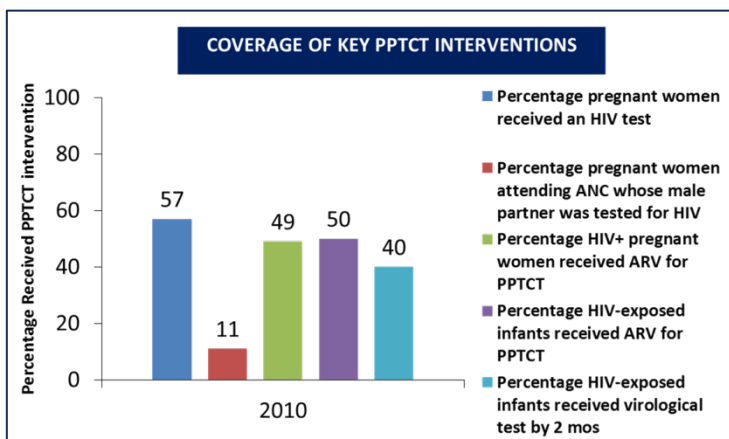
ACCESS to PPTCT SERVICES

Number of facilities providing ANC services	997	(2010)
ANC facilities that provide HIV testing and counselling	921 (92%)	(2010)
ANC facilities that provide HIV testing and counselling and ARV for PMTCT on site	77 (8%)	(2010)
Health facilities that provide CD4 testing on site or by specimen transport	48 (5%)	(2010)
Number health facilities that offer ART (prescribe and/or clinical follow-up)	51	(2010)
Number health facilities that provide paediatric ART	32	(2010)
Proportion of facilities that provide virological testing for EID (on-site or by DBS)	32 (100%)	(2010)

-Significant expansion in access over last 5 years

-National programme has targeted universal access for HIV testing at all ANC sites

-CD4 testing done primarily via specimen transport from ART clinics



PPTCT Cascade of Services, 2010

- In 2010, 1194 HIV+ pregnant women detected
 - 762 diagnosed in pregnancy, 432 with known HIV
 - Represents 66% of estimated HIV+ pregnant women
 - Of detected women, 75% received ARV prophylaxis
- Of 896 women who received ARV for PPTCT
 - 539 (60%) received ART for their own health
 - 226 (25%) received single-dose NVP
 - 131 (15%) received maternal AZT

PPTCT & Infant Feeding Guidelines REVISED in 2010

- OPTION B (Maternal triple ARV prophylaxis) selected
- Exclusive breastfeeding (12m) recommended for exposed infants

ELIMINATION OF CONGENITAL SYPHILIS: KEY INDICATORS^{1, 7, 8}

- Available data are limited, but suggest low prevalence of syphilis among pregnant women
- Across 9 provinces and one referral center in Phnom Penh, 16,127 pregnant women were tested for syphilis during their first ANC visit in 2010

Syphilis Testing and Treatment for ANC attendees

Number pregnant women tested for syphilis	16127	(2010)
Percentage ANC attendees who were syphilis sero-positive (%)	0.4%	(2010)
Percentage ANC attendees tested positive for syphilis who received treatment	100%	(2010)

- Antenatal syphilis testing is routinely available at: ?LEVEL OF FACILITY
- Rapid testing used? STAT strategy used?
- Congenital syphilis rate?

ELIMINATION OF NEW PAEDIATRIC HIV INFECTIONS AND CONGENITAL SYPHILIS^{1, 7, 8}

NCHADS NATIONAL PPTCT TARGETS FOR 2015:

Percentage Pregnant women tested for HIV and receive their results	85%
Percentage HIV-positive pregnant women who receive ARVs for PPTCT	75%
Percentage of HIV-infected infants born to HIV-positive mothers	16%
Percentage male partners who were tested for HIV and received their results	40%
Percentage HIV exposed infants who receive a HIV test within 12 months of birth	70%
Percentage HIV exposed infants who start CTX prophylaxis within 2 months of birth	70%

FUNDING & GOVERNANCE

1. Expenditure:	Year 2006	Year 2007	Year 2008	Year 2009	Year 2010	Year 2011
a) Total expenditure for all HIV programmes per year US\$	US\$	53,258,765	51,846,997	US\$	US\$	US\$
b) Total expenditure on PPTCT activities (Code 1.17 in UNGASS Funding Reporting Matrix) US\$	US\$	1,524,146	742,457	US\$	US\$	US\$
- Of which domestic funding (%)	%	%	%	%	%	%
- Of which international funding per origin (%): GFATM (pls specify round#), PEPFAR, UNITAID, Gates Foundation, Other (pls specify)	% from?	% from?	% from?	% from?	% from?	% from?
- Of which via national AIDS programme (%)	%	%	%	%	%	%
- Of which via national MNCH programme (%)	%	%	%	%	%	%
c) Ratio PPTCT Expenditure/Estimated number of Women Living with HIV (from national HIV Estimates) (per year where data available) US\$/person	US\$/person	US\$/person	US\$/person	US\$/person	US\$/person	US\$/person

2. Which programme is mainly directing PPTCT? (Please tick) () HIV Programme () MNCH Programme () Joint

3. Resource needs / Budget:	Year 2010	Year 2011	Year 2012	Year 2013	Year 2014	Year 2015
a) Total estimated total HIV resource needs in current national strategic plan US\$	US\$	US\$	US\$	US\$	US\$	US\$
b) Total secured budget for PPTCT in the current/next year (2011 and/or 2012): US\$	US\$	US\$	US\$	US\$	US\$	US\$
- Of which domestic funding (%)	%	%	%	%	%	%
- Of which international funding per origin (%): GFATM (pls specify round#), PEPFAR, UNITAID, Gates Foundation, Other (pls specify)	% from?	% from?	% from?	% from?	% from?	% from?
- Of which via national AIDS programme (%)	%	%	%	%	%	%
- Of which via national MNCH programme (%)	%	%	%	%	%	%
c) Ratio PPTCT Budget/Estimated number of Women Living with HIV (from last national HIV Estimates): US\$ per person	US\$/person	US\$/person	US\$/person	US\$/person	US\$/person	US\$/person

REFERENCES

1. The National AIDS Authority Kingdom of Cambodia. Cambodia Country Progress Report: Monitoring the Progress towards the Implementation of the Declaration of Commitment on HIV and AIDS. Phnom Penh, Cambodia 2010 [cited July 19, 2010]; Available from: <http://www.unaids.org/en/KnowledgeCentre/HIVData/CountryProgress/2010CountryProgressAllCountries.asp>.
2. UNAIDS. Global report: UNAIDS report on the global AIDS epidemic 2010. Geneva; 2010.
3. United Nations Population Division/DESA. World Contraceptive Use, 2009. 2011 [cited 22 May, 2011]; Available from: <http://www.un.org/esa/population/publications/WCU2009/Main.html>.
4. WHO/UNICEF/UNFPA/World Bank. Trends in Maternal Mortality: 1990-2008. Geneva, Switzerland: WHO; 2010.
5. World Health Organization. Trends in maternal mortality: 1990-2008. Geneva, Switzerland; 2010.
6. UNICEF. Maternal, Neonatal, and Child Survival: Country Profile- Cambodia. New York City 2010 [cited 10 April, 2011]; Available from: http://www.childinfo.org/profiles_973.htm.
7. WHO/UNICEF/UNAIDS. A guide on indicators for monitoring and reporting on the health sector response to HIV/AIDS. Geneva, Switzerland: WHO; 2011 [cited 22 May, 2011]; Available from: http://www.who.int/hiv/pub/me/ua_indicator_guide/en/index.html.
8. WHO/UNICEF/UNAIDS. Joint reporting tool on the health sector response to HIV/AIDS 2011. Geneva, Switzerland: WHO; 2011 [cited 22 May, 2011]; Available from: <http://www.who.int/hiv/data/tool2011/en/index.html>.